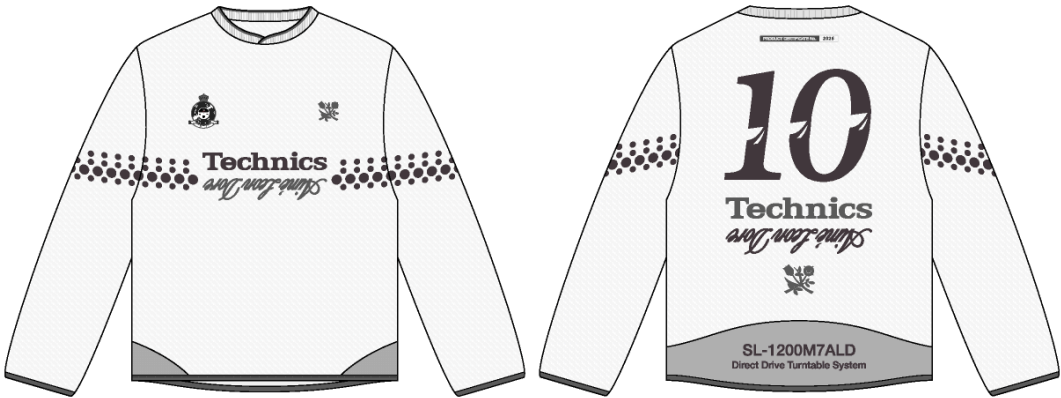


Name	LS Technics Soccer Jersey
Style No.	SS26CT095
Division	Mens
Category	Jerseys
Season	Spring/Summer
Year	2026
Size Scale	<div>M -Sample size</div> <div><div>XS</div><div>S</div><div>M</div><div>L</div><div>XL</div><div>XXL</div></div>
Style Status	Adopted
Factory	UN-AVAILABLE
Designer Name	Wes
TD Name	Anastasiya
Created by/Author	8/26/2025 Anastasiya Zolotova anastasiya.zolotova@aimeleondore.com

LS Technics Soccer Jersey



1_B&W-1

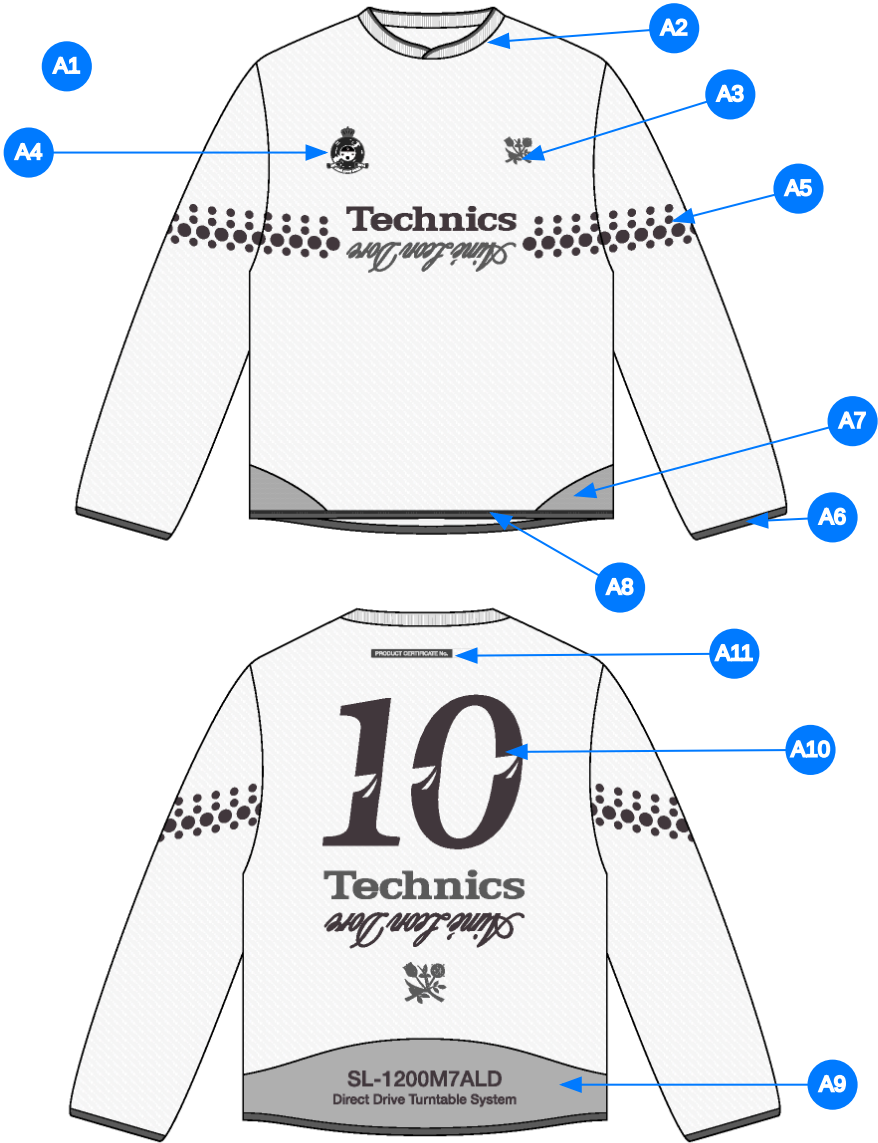


JET BLACK



BRIGHT WHITE

2_CLR-1

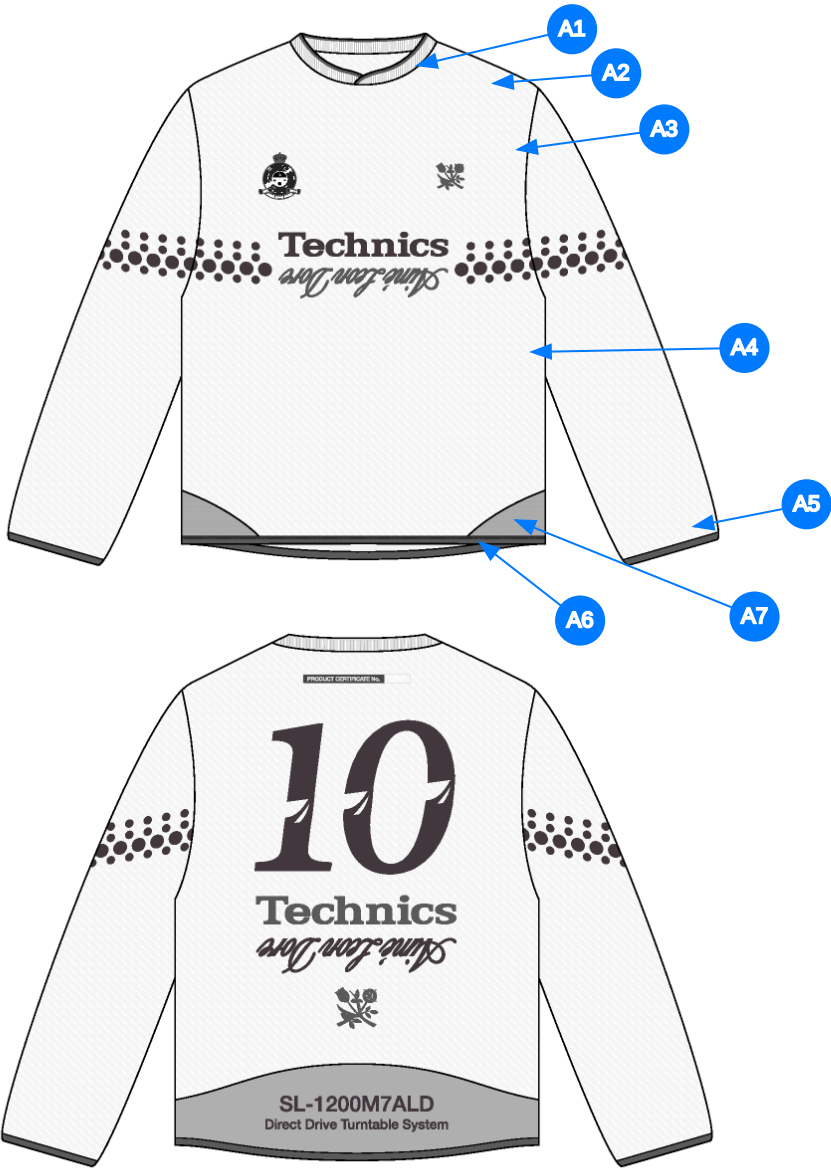


Comments (11)

- A1 FIT: NB RC56 SOCCER JERSEY (NB25CT003)
- A2 1X1 RIB DOUBLED W/ TIPPING @ NECK - SEE SEPARATE FILE FOR ARTWORK DETAILS - OVERLAP @ CF
- A3 ARTWORK @ WL CHEST
- A4 ARTWORK @ WR CHEST
- A5 ARTWORK @ SLEEVES - SEE SEPARATE FILE FOR ARTWORK DETAILS
- A6 ELASTIC BINDING @ SLEEVE OPENING
- A7 SET IN PANEL @ BOTTOM HEM - ONE PANEL MESH @ SIDE SEAM
- A8 POLY BINDING @ BOTTOM HEM
- A9 SET IN PANEL @ BOTTOM HEM - SEE SEPARATE FILE FOR DETAILS
- A10 ARTWORK @ CB
- A11 ARTWORK @ CB NECK

- 1. fit: tham khảo NB25CT003
- 2. rib tại bo cổ - cấu trúc chồng lên nhau tại giữa trước
- 3. artwork tại ngực trái
- 4. artwork tại ngực phải
- 5. artwork tại tay
- 6. thun viền lai tay
- 7. phối vải lưới tại sườn
- 8. thun viền lai áo
- 9. phối lai thân sau
- 10. artwork tại thân sau
- 11. artwork giữa cổ sau

3_Construction Details-1



Comments (7)

- A1 1/8" SN TS @ NECK
- A2 CLEAN SEAM @ SHOULDER SEAM
- A3 CLEAN SEAM FINISH @ ARMHOLE
- A4 CLEAN SEAM FINISH @ SIDE SEAM
- A5 EDGE STITCH @ BINDING
- A6 EDGE STITCH @ BINDING
- A7 1/8" SN TS @ SET IN PANELS

- 1. điều 1 kim 1/8" tại cổ
- 2. may sạch tại đường may vai
- 3. may sạch tại nách
- 4. may sạch tại sườn
- 5. mí điều tại lai tay
- 6. mí điều tại lai áo
- 7. điều 1 kim 1/8" tại phối

4_Stitching Details-1

Measured Size: M

POINT OF MEASURE	HOW TO MEASURE	CRITICAL	TYPE	TOLERANCE	EXPECTED	1ST PROTO - RCVD	VARIANCE	ADJUST BY +/-	REVISED SPEC	MEASUREMENT NOTES
Front Body Length	HPS to bottom edge	true	Full	1/2 in	27 3/4 in	27 3/4 in	0 in	0 in	27 3/4 in	
Back Body Length	CB neck seam to bottom edge	true	Full	1/2 in	27 in	27 in	0 in	0 in	27 in	
Shoulder Seam Forward	HPS to seam	false	Full	1/8 in	1/2 in	1/2 in	0 in	0 in	1/2 in	
Shoulder Slope	Shoulder point perpendicular to HPS	false	Full	1/4 in	2 in	2 1/4 in	1/4 in	0 in	2 in	
Front Neck Drop	HPS to neck seam	false	Full	1/8 in	4 1/4 in	4 1/2 in	1/4 in	0 in	4 1/4 in	Back to Spec
Back Neck Drop		true	Full	1/8 in	3/4 in	7/8 in	1/8 in	0 in	3/4 in	
Back Neck Width	Seam to seam at back neck, at HPS point	false	Full	1/4 in	7 1/2 in	7 3/4 in	1/4 in	0 in	7 1/2 in	
Neck Trim Height		false	Full	1/8 in	7/8 in	3/4 in	-1/8 in	0 in	7/8 in	
Across Shoulder Width- Seam to seam	Seam to Seam	false	Full	1/4 in	18 1/2 in	18 1/2 in	0 in	0 in	18 1/2 in	
Across Front	7" dwn from HPS, Seam to seam	false	Half	3/8 in	16 in	16 1/2 in	1/2 in	0 in	16 in	Back to Spec
Across Back	7" dwn from HPS, Seam to Seam	false	Half	3/8 in	16 1/2 in	16 3/4 in	1/4 in	0 in	16 1/2 in	
Chest Width	1" Below armhole- edge to edge	true	Half	1/2 in	22 1/4 in	22 1/4 in	0 in	0 in	22 1/4 in	
Bottom Opening Width- At Edge	At bottom edge	true	Half	1/2 in	22 1/4 in	22 in	-1/4 in	0 in	22 1/4 in	
Bottom Binding height		false	Full	1/8 in	1/2 in	3/8 in	-1/8 in	0 in	1/2 in	
Sleeve Length from CB Neck	3-point measure from CB Neck to shoulder point to sleeve edge	true	Full	1/2 in	34 1/4 in	34 in	-1/4 in	0 in	34 1/4 in	
Armhole Drop	Below HPS - measure perpendicular	false	Full	1/4 in	11 1/2 in	11 3/8 in	-1/8 in	0 in	11 1/2 in	
Bicep Width	1" below armhole- edge to edge	false	Half	1/4 in	8 3/4 in	8 3/4 in	0 in	0 in	8 3/4 in	
Forearm Width	9" up from sleeve cuff edge	false	Half	1/4 in	6 3/4 in	6 3/4 in	0 in	0 in	6 3/4 in	
Sleeve Opening Width 1" Above Cuff Seam		true	Half	1/4 in	5 1/4 in	5 1/4 in	0 in	0 in	5 1/4 in	
Sleeve Opening Width- At Edge	At edge	false	Half	1/4 in	4 1/4 in	4 1/4 in	0 in	0 in	4 1/4 in	
Sleeve Binding Height		false	Full	1/8 in	1/2 in	3/8 in	-1/8 in	0 in	1/2 in	
Back Panel Height		true	Full	1/8 in	5 in	5 in	0 in	1 in	6 in	Increase
Front Panel Height At Side Seam		true	Full	1/8 in	3 in	2 7/8 in	-1/8 in	3/4 in	3 3/4 in	Increase
CF Artwork Placement below CF Neckline	From CF Neck Seam to Top Edge of Artwork	false	Full	1/8 in	0 in	0 in	0 in	6 in	6 in	Add
WL Artwork Placement from HPS to Top Edge		true	Full	1/8 in	7 1/4 in	0 in	0 in	0 in	7 1/4 in	
WL Artwork Placement Out from Edge of Laser Artwork		false	Full	1/8 in	2 1/4 in	0 in	0 in	0 in	2 1/4 in	
WR Chest Artwork Centered on WL Artwork		true	Full	1/8 in	0 in	0 in	0 in	0 in	0 in	
WR Chest Artwork Placement Out from CF Line		false	Full	1/8 in	2 1/4 in	0 in	0 in	0 in	2 1/4 in	
WL Sleeve Artwork Placement from Shoulder Seam		true	Full	1/8 in	4 1/4 in	0 in	0 in	0 in	4 1/4 in	
WR Sleeve Artwork Placement from Shoulder Seam		true	Full	1/8 in	4 1/4 in	0 in	0 in	0 in	4 1/4 in	
WL/WR Sleeve Artwork Centered on Sleeve Fold		true	Full	1/8 in	0 in	0 in	0 in	0 in	0 in	
CB Top Artwork Placement Below CB Neck Seam		false	Full	1/8 in	4 1/2 in	0 in	0 in	-2 1/2 in	2 in	Follow Revised
CB "#10" Artwork Placement below CB Neck Seam	From CB Neck Seam to Top Edge of Artwork	false	Full	1/8 in	-	-		-	-	
CB Artwork Centered in the Bottom Panel		true	Full	1/8 in	-	-		-	-	
Across Front/Across Back Position from HPS		true	Full	0 in	-	-		-	-	

1st Proto - Anastasiya Zolotova

CREATED ON AUG 26, 2025 7:13 PM
1ST PROTO: SIZE:M, CREATED AT: 08-25-2025

SS26CT095 LS Technics Soccer Jersey
FITTING DATE: 8/26/25
MODEL/ATTENDEES: Jessica, Anthony, Jeni, Anastasiya
STATUS: 1st Proto Approved to 1st Fit w/artwork (in revised fabric)

Fit Comments:

- 1. Front neck drop came in +1/4", go back to spec.
- 2. Across front came in +1/2", go back to spec.
- 3. Increase back panel height to 6", increase panel height at side seam to 3 3/4" to 0" at CF.
- 4. Follow revised placement for the top CB artwork to be 2" below back neck seam.
- 5. Follow placement for CF artwork to be 6" from CF neck seam to artwork top edge.

- 1. hạ cổ trước dư 1/4", điều chỉnh thông số trong dung sai
- 2. ngang thân trước 1/2", điều chỉnh thông số trong dung sai
- 3. tăng cao phối thân sau 6", tăng cao phối tại mỗi bên sườn 3 3/4" đến 0" tại giữa trước
- 4. thay đổi vị trí artwork trên giữa thân sau từ đường may cổ sau xuống 2"
- 5. thay đổi vị trí artwork giữa thân trước từ đường may cổ giữa trước đến đỉnh artwork 6"



Screen Shot 2025-08-26 at 3.09.09 PM.jpg