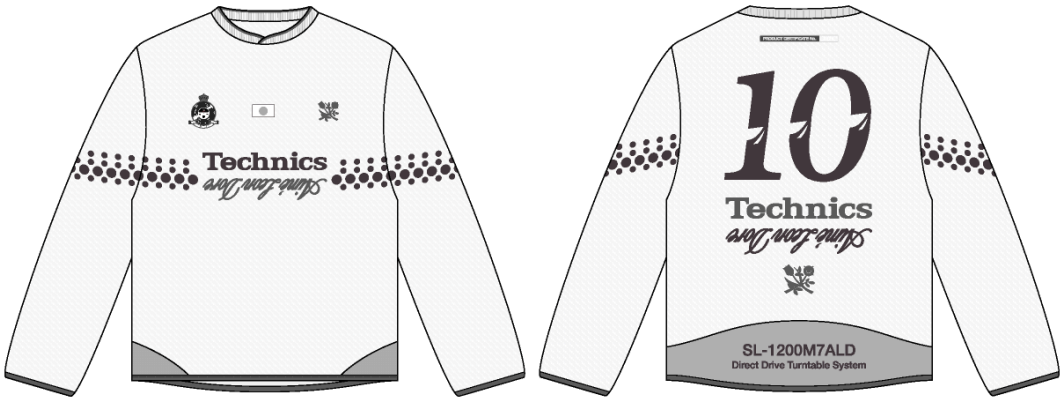


Name	LS Technics Soccer Jersey
Style No.	SS26CT095
Division	Mens
Category	Jerseys
Season	Spring/Summer
Year	2026
Size Scale	<div>M</div> -Sample size
	<div>XS</div> <div>S</div> <div>M</div> <div>L</div> <div>XL</div> <div>XXL</div>
Style Status	Adopted
Factory	UN-AVAILABLE
Designer Name	Wes
TD Name	Anastasiya
Created by/Author	6/13/2025 Anastasiya Zolotova anastasiya.zolotova@aimeleondore.com

LS Technics Soccer Jersey



1_B&W-1

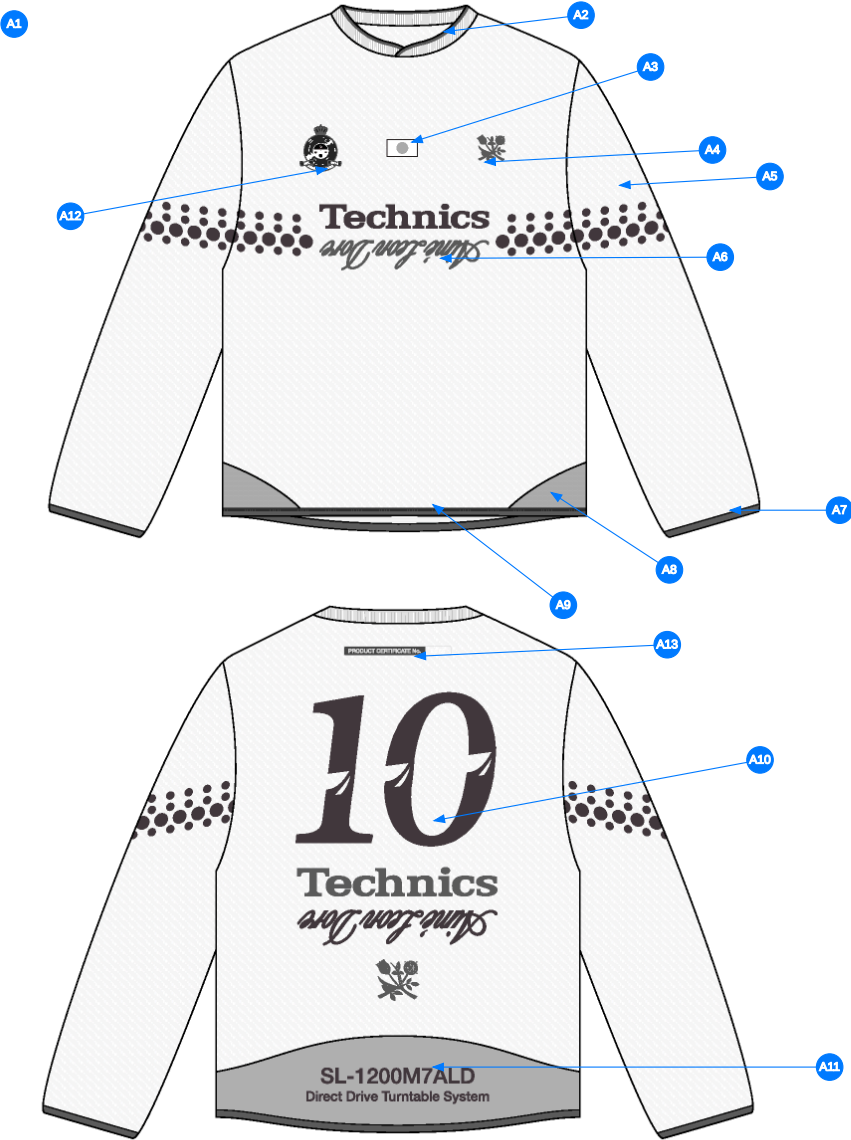


JET BLACK



BRIGHT WHITE

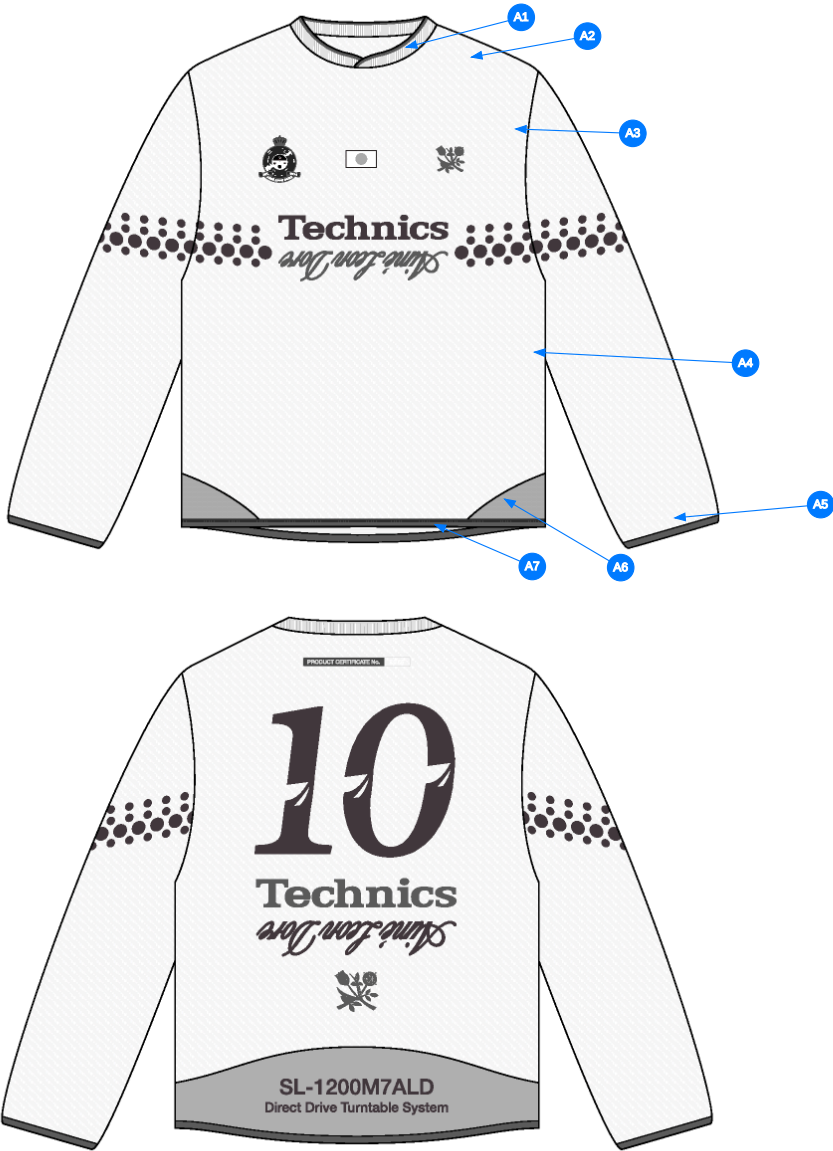
2_CLR-1



Comments (13)

- A1 FIT: NB RC56 SOCCER JERSEY (NB25CT003)
- A2 1X1 RIB DOUBLED W/ TIPPING @ NECK - SEE SEPARATE FILE FOR ARTWORK DETAILS - OVERLAP @ CF
- A3 ARTWORK @ CF CHEST
- A4 ARTWORK @ WL CHEST
- A5 ARTWORK @ SLEEVES - SEE SEPARATE FILE FOR ARTWORK DETAILS
- A6 ARTWORK @ CF
- A7 ELASTIC BINDING @ SLEEVE OPENING
- A8 SET IN PANEL @ BOTTOM HEM - ONE PANEL MESH @ SIDE SEAM
- A9 POLY BINDING @ BOTTOM HEM
- A10 ARTWORK @ CB
- A11 SET IN PANEL @ BOTTOM HEM - SEE SEPARATE FILE FOR DETAILS
- A12 ARTWORK @ WR CHEST
- A13 ARTWORK @ CB NECK

3_Construction Details-1



Comments (7)

- A1** 1/8" SN TS @ NECK
- A2** CLEAN SEAM @ SHOULDER SEAM
- A3** CLEAN SEAM FINISH @ ARMHOLE
- A4** CLEAN SEAM FINISH @ SIDE SEAM
- A5** EDGE STITCH @ BINDING
- A6** 1/8" SN TS @ SET IN PANELS
- A7** EDGE STITCH @ BINDING

4_Stitching Details-1

RIB ARTWORK
- ARTWORK IS NOT SHOWN TO SCALE BELOW



BRIGHT WHITE C/W



VIOLET INDIGO C/W



	PANTONE 19-3750 TCX Violet Indigo		PANTONE Bright White White		PANTONE BLACK C BLACK		PANTONE Bright White White
---	---	---	----------------------------------	---	-----------------------------	---	----------------------------------

EXECUTION REFERENCE



Rib Artwork (NECK)-1

NECK CONSTRUCTION REFERENCE



Neck Construction Reference-1

Sample Size: M

POINT OF MEASURE	HOW TO MEASURE	CRITICAL	TYPE	TOLERANCE	M
Front Body Length	HPS to bottom edge	true	Full	1/2 in	27 3/4 in
Back Body Length	CB neck seam to bottom edge	true	Full	1/2 in	27 in
Shoulder Seam Forward	HPS to seam	false	Full	1/8 in	1/2 in
Shoulder Slope	Shoulder point perpendicular to HPS	false	Full	1/4 in	2 in
Front Neck Drop	HPS to neck seam	false	Full	1/8 in	4 1/4 in
Back Neck Drop	FROM HPS LEVEL STRAIGHT DOWN TO CB NECK SEAM	true	Full	1/8 in	3/4 in
Back Neck Width	Seam to seam at back neck, at HPS point	false	Full	1/4 in	7 1/2 in
Neck Trim Height	Neck Seam to trim edge (before folded)	false	Full	1/8 in	7/8 in
Across Shoulder Width- Seam to seam	Seam to Seam	false	Full	1/4 in	18 1/2 in
Across Front	7" dwn from HPS, Seam to seam	false	Half	3/8 in	16 in
Across Back	7" dwn from HPS, Seam to Seam	false	Half	3/8 in	16 1/2 in
Chest Width	1" Below armhole- edge to edge	true	Half	1/2 in	22 1/4 in
Bottom Opening Width- At Edge	At bottom edge	true	Half	1/2 in	22 1/4 in
Bottom Binding height		false	Full	1/8 in	1/2 in
Sleeve Length from CB Neck	3-point measure from CB Neck to shoulder point to sleeve edge	true	Full	1/2 in	34 1/4 in
Armhole Drop	Below HPS - measure perpendicular	false	Full	1/4 in	11 1/2 in
Bicep Width	1" below armhole- edge to edge	false	Half	1/4 in	8 3/4 in
Forearm Width	9" up from sleeve cuff edge	false	Half	1/4 in	6 3/4 in
Sleeve Opening Width 1" Above Cuff Seam		true	Half	1/4 in	5 1/4 in
Sleeve Opening Width- At Edge	At edge	false	Half	1/4 in	4 1/4 in
Sleeve Binding Height		false	Full	1/8 in	1/2 in
WL Artwork Placement from HPS to Top Edge		true	Full	1/8 in	7 1/4 in
WL Artwork Placement Out from Edge of Laser Artwork		false	Full	1/8 in	2 1/4 in
WR Chest Artwork Centered on WL Artwork		true	Full	1/8 in	0 in
WR Chest Artwork Placement Out from CF Line		false	Full	1/8 in	2 1/4 in
WL Sleeve Artwork Placement from Shoulder Seam		true	Full	1/8 in	4 1/4 in
WR Sleeve Artwork Placement from Shoulder Seam		true	Full	1/8 in	4 1/4 in
WL/WR Sleeve Artwork Centered on Sleeve Fold		true	Full	1/8 in	0 in
CB Artwork Placement Below CB Neck Seam		false	Full	1/8 in	4 1/2 in
Back Artwork Centered on Bottom Back Panel		true	Full	1/8 in	0 in
Back Panel Height		true	Full	1/8 in	5 in
Front Panel Height At Side Seam		true	Full	1/8 in	3 in

Development Notes - Anastasiya Zolotova

CREATED ON NOV 14, 2024 5:07 PM

SS26CT095 LS TECHNICS SOCCER JERSEY

Date: 6/13/25

Status: Requesting 1st Fit

TD: Anastasiya

Fit: Follow measurement page, construction page, and design sketch to make 1st proto.