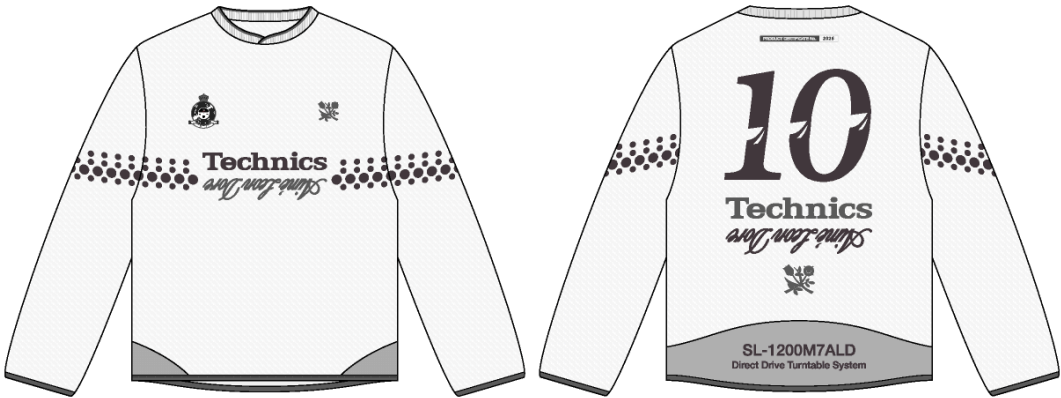


Name	LS Technics Soccer Jersey
Style No.	SS26CT095
Division	Mens
Category	Jerseys
Season	Spring/Summer
Year	2026
Size Scale	<b>M</b> -Sample size
	<div>XS S M L XL XXL</div>
Style Status	Adopted
Factory	UN-AVAILABLE
Designer Name	Wes
TD Name	Anastasiya
Created by/Author	12/8/2025 Anastasiya Zolotova anastasiya.zolotova@aimeleondore.com

LS Technics Soccer Jersey



1\_B&W-1

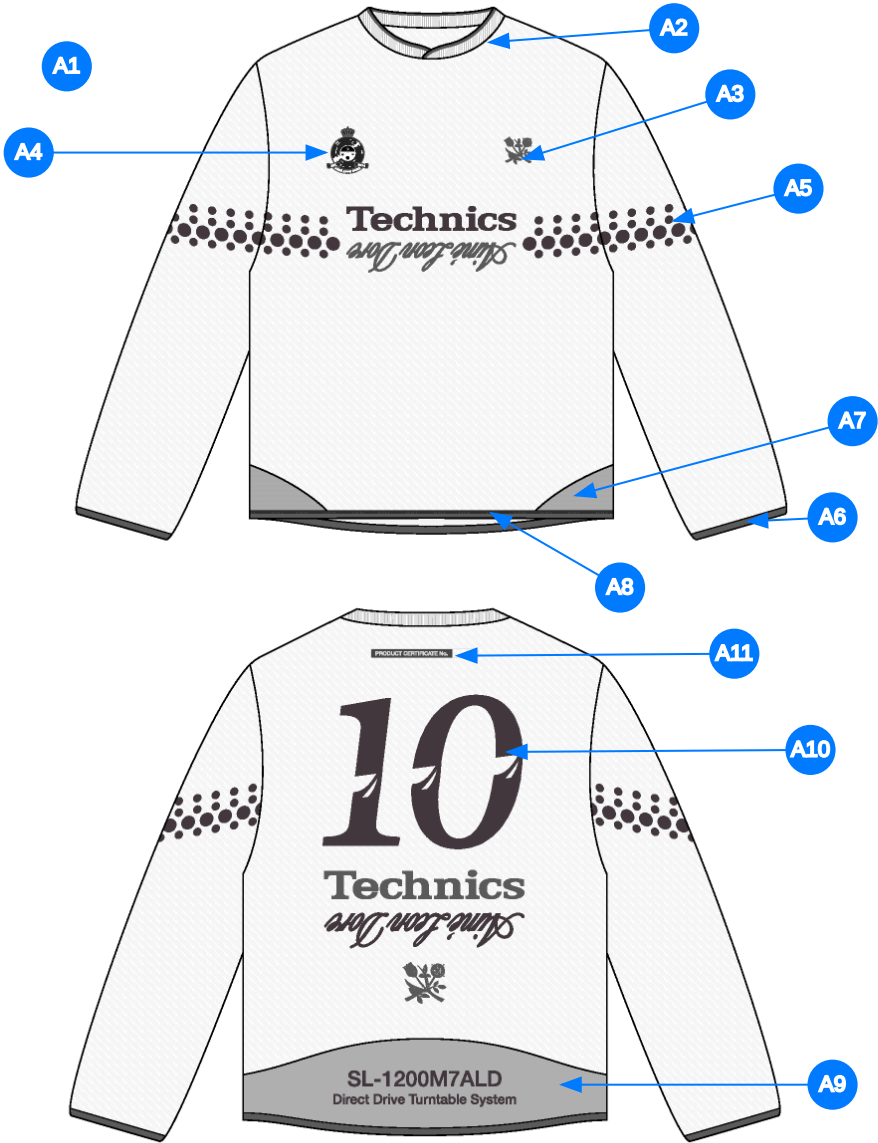


JET BLACK



BRIGHT WHITE

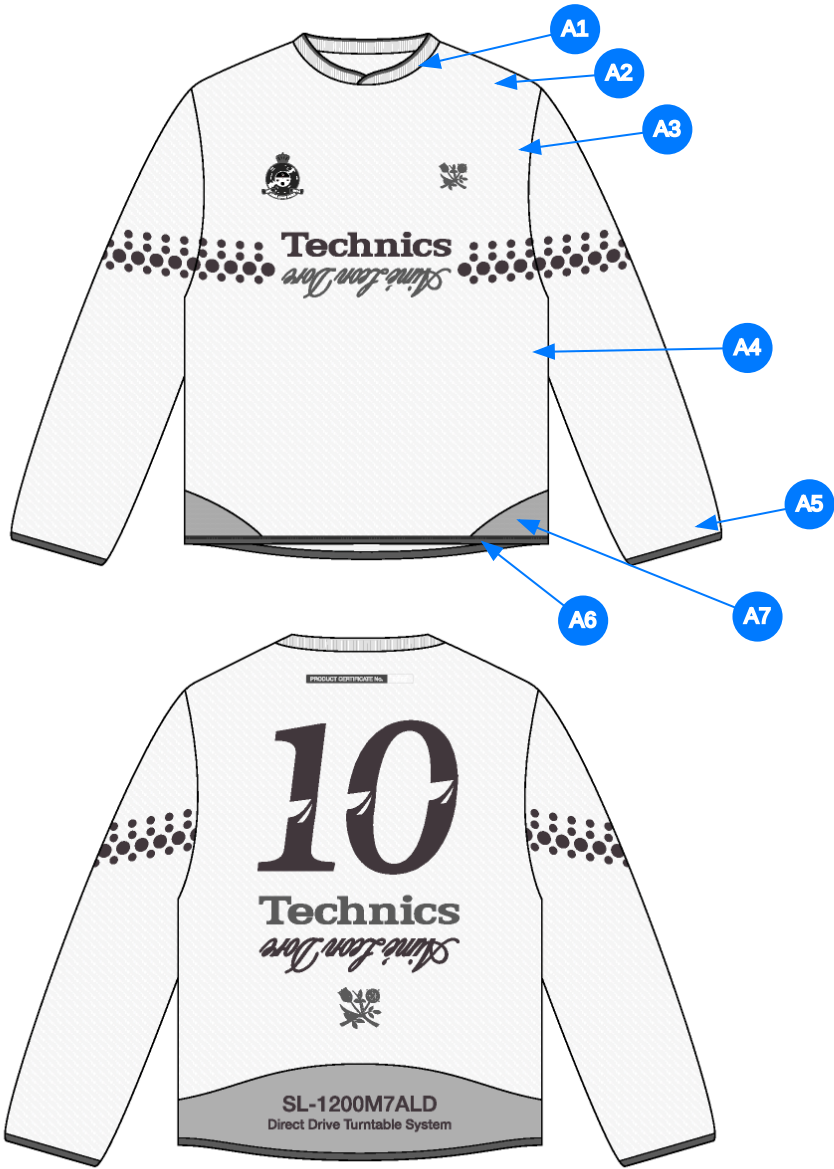
2\_CLR-1



Comments (11)

- A1 FIT: NB RC56 SOCCER JERSEY (NB25CT003)
- A2 1X1 RIB SINGLE W/ TIPPING @ NECK - SEE SEPARATE FILE FOR ARTWORK DETAILS - OVERLAP @ CF
- A3 ARTWORK @ WL CHEST
- A4 ARTWORK @ WR CHEST
- A5 ARTWORK @ SLEEVES - SEE SEPARATE FILE FOR ARTWORK DETAILS
- A6 ELASTIC BINDING @ SLEEVE OPENING
- A7 SET IN PANEL @ BOTTOM HEM - ONE PANEL MESH @ SIDE SEAM
- A8 ELASTIC BINDING @ BOTTOM HEM
- A9 SET IN PANEL @ BOTTOM HEM - SEE SEPARATE FILE FOR DETAILS
- A10 ARTWORK @ CB
- A11 ARTWORK @ CB NECK

3\_Construction Details-1



Comments (7)

- A1 1/8" SN TS @ NECK
- A2 CLEAN SEAM @ SHOULDER SEAM
- A3 CLEAN SEAM FINISH @ ARMHOLE
- A4 CLEAN SEAM FINISH @ SIDE SEAM
- A5 EDGE STITCH @ BINDING
- A6 EDGE STITCH @ BINDING
- A7 1/8" SN TS @ SET IN PANELS

4\_Stitching Details-1

Sample Size: M

POINT OF MEASURE	HOW TO MEASURE	CRITICAL	TYPE	TOLERANCE	XS	S	M	L	XL	XXL
Front Body Length	HPS to bottom edge	true	Full	1/2 in	-7/8 in	-7/8 in	27 3/4 in	7/8 in	7/8 in	7/8 in
Back Body Length	CB neck seam to bottom edge	true	Full	1/2 in	-7/8 in	-7/8 in	27 in	7/8 in	7/8 in	7/8 in
Shoulder Seam Forward	HPS to seam	false	Full	1/8 in	0 in	0 in	1/2 in	0 in	0 in	0 in
Shoulder Slope	Shoulder point perpendicular to HPS	false	Full	1/4 in	0 in	0 in	2 in	0 in	0 in	0 in
Front Neck Drop	HPS to neck seam	false	Full	1/8 in	-1/8 in	-1/8 in	4 1/4 in	1/8 in	1/8 in	1/8 in
Back Neck Drop		true	Full	1/8 in	0 in	0 in	3/4 in	0 in	0 in	0 in
Back Neck Width	Seam to seam at back neck, at HPS point	false	Full	1/4 in	-1/4 in	-1/4 in	7 3/4 in	1/4 in	1/4 in	1/4 in
Neck Trim Height		false	Full	1/8 in	0 in	0 in	7/8 in	0 in	0 in	0 in
Across Shoulder Width- Seam to seam	Seam to Seam	false	Full	1/4 in	-3/4 in	-3/4 in	18 1/2 in	3/4 in	1 in	1 in
Across Front/Across Back Position from HPS		true	Full	0 in	-1/4 in	-1/4 in	7 in	1/4 in	1/4 in	1/4 in
Across Front	Down from HPS, Seam to seam	false	Half	3/8 in	-3/4 in	-3/4 in	16 in	3/4 in	1 in	1 in
Across Back	Down from HPS, Seam to Seam	false	Half	3/8 in	-3/4 in	-3/4 in	16 1/2 in	3/4 in	1 in	1 in
Chest Width	1" Below armhole- edge to edge	true	Half	1/2 in	-1 in	-1 in	22 1/4 in	1 in	1 1/2 in	1 1/2 in
Bottom Opening Width- At Edge Relaxed	At bottom edge	true	Half	1/2 in	-1 in	-1 in	21 1/2 in	1 in	1 1/2 in	1 1/2 in
Bottom Opening Width- At Edge Extended (Pattern)	At bottom edge	true	Half	1/2 in	-1 in	-1 in	22 1/4 in	1 in	1 1/2 in	1 1/2 in
Bottom Binding height		false	Full	1/8 in	0 in	0 in	3/8 in	0 in	0 in	0 in
Sleeve Length from CB Neck	3-point measure from CB Neck to shoulder point to sleeve edge	true	Full	1/2 in	-1 in	-1 in	34 1/2 in	1 in	1 in	1 in
Armhole Drop	Below HPS - measure perpendicular	false	Full	1/4 in	-3/8 in	-3/8 in	11 1/2 in	3/8 in	1/2 in	1/2 in
Bicep Width	1" below armhole- edge to edge	false	Half	1/4 in	-3/8 in	-3/8 in	8 3/4 in	3/8 in	1/2 in	1/2 in
Forearm Width	9" up from sleeve cuff edge	false	Half	1/4 in	-1/4 in	-1/4 in	6 3/4 in	1/4 in	3/8 in	3/8 in
Sleeve Opening Width 1" Above Cuff Seam		true	Half	1/4 in	-1/4 in	-1/4 in	5 1/4 in	1/4 in	3/8 in	3/8 in
Sleeve Opening Width- At Edge - Relaxed	At edge	false	Half	1/4 in	-1/4 in	-1/4 in	4 1/4 in	1/4 in	1/4 in	1/4 in
Sleeve Opening Width- Extended (Pattern)	At edge	true	Half	1/4 in	-1/4 in	-1/4 in	4 3/4 in	1/4 in	1/4 in	1/4 in
Sleeve Binding Height		false	Full	1/8 in	0 in	0 in	3/8 in	0 in	0 in	0 in
Back Panel Height		true	Full	1/8 in	0 in	0 in	6 in	0 in	0 in	0 in
Front Panel Height At Side Seam		true	Full	1/8 in	0 in	0 in	3 3/4 in	0 in	0 in	0 in
CF Artwork Placement below CF Neckline	From CF Neck Seam to Top Edge of Artwork	false	Full	1/8 in	-1/8 in	-1/8 in	5 in	1/8 in	1/8 in	1/8 in
WL Artwork Placement from HPS to Top Edge		true	Full	1/8 in	-1/4 in	-1/4 in	6 5/8 in	1/4 in	1/4 in	1/4 in
WL Artwork Placement Out from Edge of Laser Artwork		false	Full	1/8 in	-1/8 in	-1/8 in	2 3/4 in	1/8 in	1/8 in	1/8 in
WR Chest Artwork from HPS to Top Edge		true	Full	1/8 in	-1/4 in	-1/4 in	5 1/4 in	1/4 in	1/4 in	1/4 in
WR Chest Artwork Placement Out from CF Line		false	Full	1/8 in	-1/8 in	-1/8 in	2 1/2 in	1/8 in	1/8 in	1/8 in
WR/WL Sleeve Artwork Placement from Shoulder Seam		true	Full	1/8 in	0 in	0 in	6 1/4 in	0 in	0 in	0 in
CB Top Artwork Placement Below CB Neck Seam		false	Full	1/8 in	0 in	0 in	2 in	0 in	0 in	0 in
CB "#10" Artwork Placement below CB Neck Seam	From CB Neck Seam to Top Edge of Artwork	false	Full	1/8 in	0 in	0 in	4 1/4 in	0 in	0 in	0 in
CB Artwork Centered in the Bottom Panel		true	Full	1/8 in	0 in	0 in	0 in	0 in	0 in	0 in

Sample Size: M

POINT OF MEASURE	HOW TO MEASURE	CRITICAL	TYPE	TOLERANCE	XS	S	M	L	XL	XXL
Front Body Length	HPS to bottom edge	true	Full	1/2 in	26 in	26 7/8 in	27 3/4 in	28 5/8 in	29 1/2 in	30 3/8 in
Back Body Length	CB neck seam to bottom edge	true	Full	1/2 in	25 1/4 in	26 1/8 in	27 in	27 7/8 in	28 3/4 in	29 5/8 in
Shoulder Seam Forward	HPS to seam	false	Full	1/8 in	1/2 in	1/2 in	1/2 in	1/2 in	1/2 in	1/2 in
Shoulder Slope	Shoulder point perpendicular to HPS	false	Full	1/4 in	2 in	2 in	2 in	2 in	2 in	2 in
Front Neck Drop	HPS to neck seam	false	Full	1/8 in	4 in	4 1/8 in	4 1/4 in	4 3/8 in	4 1/2 in	4 5/8 in
Back Neck Drop		true	Full	1/8 in	3/4 in	3/4 in	3/4 in	3/4 in	3/4 in	3/4 in
Back Neck Width	Seam to seam at back neck, at HPS point	false	Full	1/4 in	7 1/4 in	7 1/2 in	7 3/4 in	8 in	8 1/4 in	8 1/2 in
Neck Trim Height		false	Full	1/8 in	7/8 in	7/8 in	7/8 in	7/8 in	7/8 in	7/8 in
Across Shoulder Width- Seam to seam	Seam to Seam	false	Full	1/4 in	17 in	17 3/4 in	18 1/2 in	19 1/4 in	20 1/4 in	21 1/4 in
Across Front/Across Back Position from HPS		true	Full	0 in	6 1/2 in	6 3/4 in	7 in	7 1/4 in	7 1/2 in	7 3/4 in
Across Front	Down from HPS, Seam to seam	false	Half	3/8 in	14 1/2 in	15 1/4 in	16 in	16 3/4 in	17 3/4 in	18 3/4 in
Across Back	Down from HPS, Seam to Seam	false	Half	3/8 in	15 in	15 3/4 in	16 1/2 in	17 1/4 in	18 1/4 in	19 1/4 in
Chest Width	1" Below armhole- edge to edge	true	Half	1/2 in	20 1/4 in	21 1/4 in	22 1/4 in	23 1/4 in	24 3/4 in	26 1/4 in
Bottom Opening Width- At Edge Relaxed	At bottom edge	true	Half	1/2 in	19 1/2 in	20 1/2 in	21 1/2 in	22 1/2 in	24 in	25 1/2 in
Bottom Opening Width- At Edge Extended (Pattern)	At bottom edge	true	Half	1/2 in	20 1/4 in	21 1/4 in	22 1/4 in	23 1/4 in	24 3/4 in	26 1/4 in
Bottom Binding height		false	Full	1/8 in	3/8 in	3/8 in	3/8 in	3/8 in	3/8 in	3/8 in
Sleeve Length from CB Neck	3-point measure from CB Neck to shoulder point to sleeve edge	true	Full	1/2 in	32 1/2 in	33 1/2 in	34 1/2 in	35 1/2 in	36 1/2 in	37 1/2 in
Armhole Drop	Below HPS - measure perpendicular	false	Full	1/4 in	10 3/4 in	11 1/8 in	11 1/2 in	11 7/8 in	12 3/8 in	12 7/8 in
Bicep Width	1" below armhole- edge to edge	false	Half	1/4 in	8 in	8 3/8 in	8 3/4 in	9 1/8 in	9 5/8 in	10 1/8 in
Forearm Width	9" up from sleeve cuff edge	false	Half	1/4 in	6 1/4 in	6 1/2 in	6 3/4 in	7 in	7 3/8 in	7 3/4 in
Sleeve Opening Width 1" Above Cuff Seam		true	Half	1/4 in	4 3/4 in	5 in	5 1/4 in	5 1/2 in	5 7/8 in	6 1/4 in
Sleeve Opening Width- At Edge - Relaxed	At edge	false	Half	1/4 in	3 3/4 in	4 in	4 1/4 in	4 1/2 in	4 3/4 in	5 in
Sleeve Opening Width- Extended (Pattern)	At edge	true	Half	1/4 in	4 1/4 in	4 1/2 in	4 3/4 in	5 in	5 1/4 in	5 1/2 in
Sleeve Binding Height		false	Full	1/8 in	3/8 in	3/8 in	3/8 in	3/8 in	3/8 in	3/8 in
Back Panel Height		true	Full	1/8 in	6 in	6 in	6 in	6 in	6 in	6 in
Front Panel Height At Side Seam		true	Full	1/8 in	3 3/4 in	3 3/4 in	3 3/4 in	3 3/4 in	3 3/4 in	3 3/4 in
CF Artwork Placement below CF Neckline	From CF Neck Seam to Top Edge of Artwork	false	Full	1/8 in	4 3/4 in	4 7/8 in	5 in	5 1/8 in	5 1/4 in	5 3/8 in
WL Artwork Placement from HPS to Top Edge		true	Full	1/8 in	6 1/8 in	6 3/8 in	6 5/8 in	6 7/8 in	7 1/8 in	7 3/8 in
WL Artwork Placement Out from Edge of Laser Artwork		false	Full	1/8 in	2 1/2 in	2 5/8 in	2 3/4 in	2 7/8 in	3 in	3 1/8 in
WR Chest Artwork from HPS to Top Edge		true	Full	1/8 in	4 3/4 in	5 in	5 1/4 in	5 1/2 in	5 3/4 in	6 in
WR Chest Artwork Placement Out from CF Line		false	Full	1/8 in	2 1/4 in	2 3/8 in	2 1/2 in	2 5/8 in	2 3/4 in	2 7/8 in
WR/WL Sleeve Artwork Placement from Shoulder Seam		true	Full	1/8 in	6 1/4 in	6 1/4 in	6 1/4 in	6 1/4 in	6 1/4 in	6 1/4 in
CB Top Artwork Placement Below CB Neck Seam		false	Full	1/8 in	2 in	2 in	2 in	2 in	2 in	2 in
CB "#10" Artwork Placement below CB Neck Seam	From CB Neck Seam to Top Edge of Artwork	false	Full	1/8 in	4 1/4 in	4 1/4 in	4 1/4 in	4 1/4 in	4 1/4 in	4 1/4 in
CB Artwork Centered in the Bottom Panel		true	Full	1/8 in	0 in	0 in	0 in	0 in	0 in	0 in

Measured Size: M

POINT OF MEASURE	HOW TO MEASURE	CRITICAL	TYPE	TOLERANCE	EXPECTED	PPS - RCVD	VARIANCE	ADJUST BY +/-	REVISED SPEC	MEASUREMENT NOTES
Front Body Length	HPS to bottom edge	true	Full	1/2 in	27 3/4 in	27 1/2 in	-1/4 in	0 in	27 3/4 in	
Back Body Length	CB neck seam to bottom edge	true	Full	1/2 in	27 in	27 in	0 in	0 in	27 in	
Shoulder Seam Forward	HPS to seam	false	Full	1/8 in	1/2 in	1/2 in	0 in	0 in	1/2 in	
Shoulder Slope	Shoulder point perpendicular to HPS	false	Full	1/4 in	2 in	2 in	0 in	0 in	2 in	
Front Neck Drop	HPS to neck seam	false	Full	1/8 in	4 1/4 in	4 3/8 in	1/8 in	0 in	4 1/4 in	
Back Neck Drop		true	Full	1/8 in	3/4 in	3/4 in	0 in	0 in	3/4 in	
Back Neck Width	Seam to seam at back neck, at HPS point	false	Full	1/4 in	7 3/4 in	7 1/2 in	-1/4 in	0 in	7 3/4 in	
Neck Trim Height		false	Full	1/8 in	7/8 in	3/4 in	-1/8 in	0 in	7/8 in	
Across Shoulder Width- Seam to seam	Seam to Seam	false	Full	1/4 in	18 1/2 in	18 1/4 in	-1/4 in	0 in	18 1/2 in	
Across Front/Across Back Position from HPS		true	Full	0 in	7 in	7 in	0 in	0 in	7 in	
Across Front	Down from HPS, Seam to seam	false	Half	3/8 in	16 in	16 in	0 in	0 in	16 in	
Across Back	Down from HPS, Seam to Seam	false	Half	3/8 in	16 1/2 in	17 in	1/2 in	0 in	16 1/2 in	Back to Spec
Chest Width	1" Below armhole- edge to edge	true	Half	1/2 in	22 1/4 in	22 1/4 in	0 in	0 in	22 1/4 in	
Bottom Opening Width- At Edge Relaxed	At bottom edge	true	Half	1/2 in	21 1/2 in	21 1/2 in	0 in	0 in	21 1/2 in	
Bottom Opening Width- At Edge Extended (Pattern)	At bottom edge	true	Half	1/2 in	0 in	22 1/4 in	22 1/4 in	22 1/4 in	22 1/4 in	Keep As Sample
Bottom Binding height		false	Full	1/8 in	1/2 in	1/2 in	0 in	-1/8 in	3/8 in	Reduce
Sleeve Length from CB Neck	3-point measure from CB Neck to shoulder point to sleeve edge	true	Full	1/2 in	34 1/4 in	34 in	-1/4 in	1/4 in	34 1/2 in	
Armhole Drop	Below HPS - measure perpendicular	false	Full	1/4 in	11 1/2 in	11 1/2 in	0 in	0 in	11 1/2 in	
Bicep Width	1" below armhole- edge to edge	false	Half	1/4 in	8 3/4 in	8 3/4 in	0 in	0 in	8 3/4 in	
Forearm Width	9" up from sleeve cuff edge	false	Half	1/4 in	6 3/4 in	6 3/4 in	0 in	0 in	6 3/4 in	
Sleeve Opening Width 1" Above Cuff Seam		true	Half	1/4 in	5 1/4 in	5 in	-1/4 in	0 in	5 1/4 in	
Sleeve Opening Width- At Edge - Relaxed	At edge	false	Half	1/4 in	4 1/4 in	4 1/4 in	0 in	0 in	4 1/4 in	
Sleeve Opening Width- Extended (Pattern)	At edge	true	Half	1/4 in	0 in	4 3/4 in	4 3/4 in	4 3/4 in	4 3/4 in	Keep As Sample
Sleeve Binding Height		false	Full	1/8 in	1/2 in	1/2 in	0 in	-1/8 in	3/8 in	Reduce
Back Panel Height		true	Full	1/8 in	6 in	5 3/4 in	-1/4 in	0 in	6 in	Back to Spec
Front Panel Height At Side Seam		true	Full	1/8 in	3 3/4 in	3 1/2 in	-1/4 in	0 in	3 3/4 in	Back to Spec
CF Artwork Placement below CF Neckline	From CF Neck Seam to Top Edge of Artwork	false	Full	1/8 in	5 in	5 in	0 in	0 in	5 in	
WL Artwork Placement from HPS to Top Edge		true	Full	1/8 in	6 1/2 in	6 3/8 in	-1/8 in	1/8 in	6 5/8 in	Follow Revised
WL Artwork Placement Out from Edge of Laser Artwork		false	Full	1/8 in	2 1/2 in	2 1/2 in	0 in	1/4 in	2 3/4 in	Follow revised
WR Chest Artwork from HPS to Top Edge		true	Full	1/8 in	0 in	5 1/4 in	5 1/4 in	5 1/4 in	5 1/4 in	Keep As Sample
WR Chest Artwork Placement Out from CF Line		false	Full	1/8 in	2 1/4 in	2 1/2 in	1/4 in	1/4 in	2 1/2 in	keep as sample
WR/WL Sleeve Artwork Placement from Shoulder Seam		true	Full	1/8 in	4 in	3 7/8 in	-1/8 in	2 1/4 in	6 1/4 in	Follow Revised
CB Top Artwork Placement Below CB Neck Seam		false	Full	1/8 in	2 in	2 1/4 in	1/4 in	0 in	2 in	go back to spec
CB "#10" Artwork Placement below CB Neck Seam	From CB Neck Seam to Top Edge of Artwork	false	Full	1/8 in	4 1/4 in	4 1/8 in	-1/8 in	0 in	4 1/4 in	
CB Artwork Centered in the Bottom Panel		true	Full	1/8 in	0 in	0 in	0 in	0 in	0 in	



## PPS - Anastasiya Zolotova

CREATED ON DEC 8, 2025 9:18 PM

PPS: SIZE:M, CREATED AT: 12-03-2025

SS26CT095 LS Technics Soccer Jersey

**FITTING DATE:** 12/5/25**MODEL/ATTENDEES:** Lombardo, Bigs, Cal, Anastasiya, Hyeyoung, Jeni, Sarah**STATUS:** PPS Approved to TOP (pending mini marker approval)**Fit Comments:**

1. Across back came in +1/2", go back to spec.
2. Added relaxed and extended measurements for bottom opening. Extended is pattern measurement. Keep as sample.
3. Reduce bottom binding trim height to 3/8"
4. Added relaxed and extended measurements for sleeve opening. Extended is pattern measurement. Keep as sample.
5. Reduce sleeve binding trim height to 3/8"
6. Bottom panel height at CB came in -1/4", go back to spec and do not include binding in mesh height
7. Side panel height at side seam came in -1/4", go back to spec and do not binding in mesh height
8. Follow WL artwork placement to be 6 5/8" from HPS and 2 3/4" from CF
9. Added position for WR artwork from HPS, keep as sample at 5 1/4"
10. Keep WR chest artwork from CF at 2 1/2"
11. Move down sleeve artwork to be 6 1/4" from shoulder seam
12. CB top artwork came in +1/4" go back to spec.

**Construction:**

1. Can team please revise binding construction at sleeve opening and bottom opening hem to have seam allowance encased in binding interior, clean on both sides of binding? See image of reference vs PPS.

**Grading:**

1. Please advise panel grading suggestions
2. Please advise sleeve artwork grading suggestion to keep position below sleeve cap for all sizes.

1. Nhóm vui lòng chỉnh sửa cấu trúc viền bo tại miệng tay áo và lai áo để đường may chừa được bọc gọn trong viền bo ở mặt trong, đảm bảo viền bo sạch sẽ ở cả hai mặt? Xem hình ảnh mẫu tham khảo so với mẫu PPS.

1. Vui lòng đưa ra gợi ý về thông số nhảy size cho miếng phổi
2. Vui lòng đưa ra gợi ý về thông số nhảy size cho hình in/thêu tay áo để giữ nguyên vị trí phía dưới chỏm tay áo cho tất cả các cỡ.

1. Ngang lưng bị lớn hơn 1/2", vui lòng quay lại thông số kỹ thuật đã quy định.
2. Đã thêm các thông số đo êm và kéo giãn cho lai dưới. Thông số kéo giãn là thông số dập mẫu. Giữ nguyên như mẫu.
3. Giảm chiều cao của viền bo lai dưới xuống 3/8"
4. Đã thêm các thông số đo êm và kéo giãn cho lai tay áo. Thông số kéo giãn là thông số dập mẫu. Giữ nguyên như mẫu.
5. Giảm chiều cao của viền bo tay áo xuống 3/8"
6. Chiều cao của phổi lai tại đường may giữa lưng bị ngắn hơn 1/4", vui lòng quay lại thông số kỹ thuật và không tính viền bo vào chiều cao của lưới.
7. Chiều cao của phổi hai bên tại đường may bên bị ngắn hơn 1/4", vui lòng quay lại thông số kỹ thuật và không tính viền bo vào chiều cao của lưới

8. Tuân theo vị trí hình thêu bên trái người mặc là 6 5/8" tính từ đỉnh vai và 2 3/4 inch tính từ giữa thân trước.

9. Đã thêm vị trí cho hình thêu bên phải người mặc tính từ đỉnh vai, giữ nguyên như mẫu tại 5 1/4"

10. Giữ nguyên vị trí hình thêu ngực bên phải người mặc tính từ giữa trước là 2 1/2"

11. Dời vị trí hình in/thêu tay áo xuống thành 6 1/4" tính từ đường may vai

12. Hình thêu trên đỉnh giữa sau bị lệch/lớn hơn 1/4", vui lòng quay lại thông số kỹ thuật.



Screen Shot 2025-12-05 at 1.40.14 PM.jpg



Nhóm vui lòng chỉnh sửa cấu trúc viền bo tại miệng lai tay áo và lai áo để đường may chừa được bọc gọn trong viền bo ở mặt trong, đảm bảo viền bo sạch sẽ ở cả hai mặt? Xem hình ảnh mẫu tham khảo so với mẫu PPS.

### SS26CT095 LS Technics Soccer Jersey

Revise binding construction at sleeve opening and bottom opening hem to have seam allowance finished at binding interior, clean on exterior? See image of reference vs PPS.

PPS:



REFERENCE:

Screen Shot 2025-12-08 at 4.21.18 PM.jpg