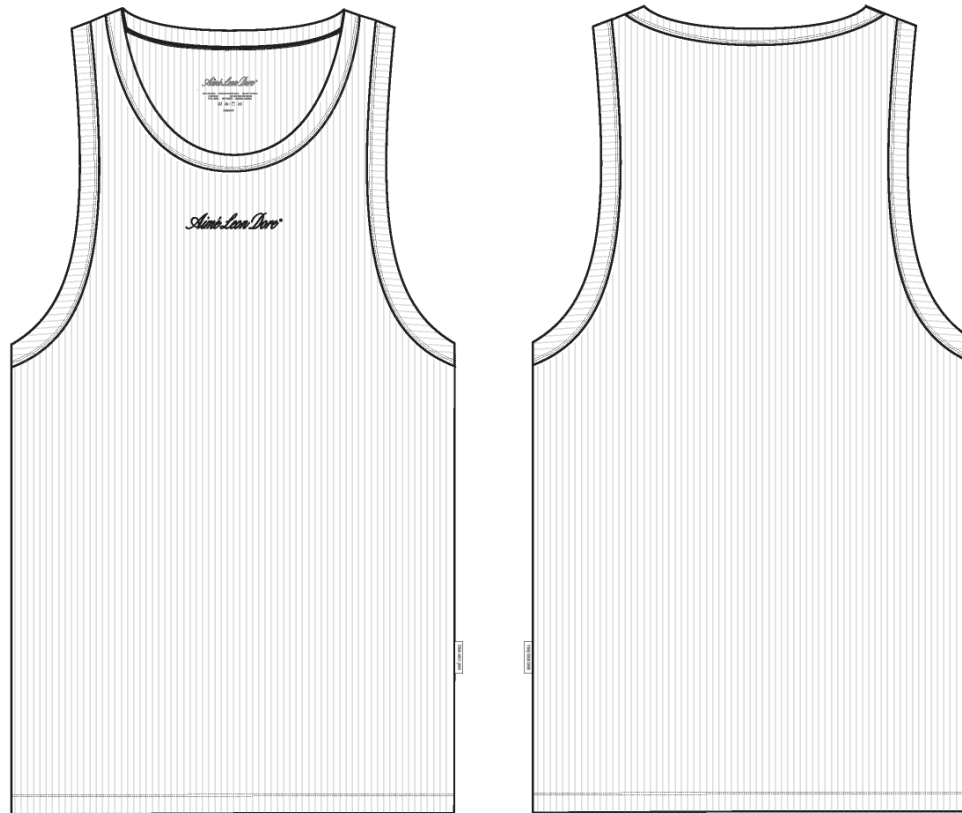


Name	Women's Script Tank
Style No.	SS26CT074
Division	Womens
Season	Spring/Summer
Year	2026
Size Scale	M -Sample size
	XS S M L XL XXL
Style Status	Development
TD Name	Anastasiya
Created by/Author	5/2/2025 Jeni Fitzgerald jeni.fitzgerald@aimeleondore.com

Women's Script Tank



1\_B&W-1

Comments (4)

- A1** -SELF BINDING @ NECK
- A2** -SELF BINDING @ ARMHOLE
- A3** -ARTWORK @ CF
- A4** ALD WOVEN LABEL @ SIDE SEAM

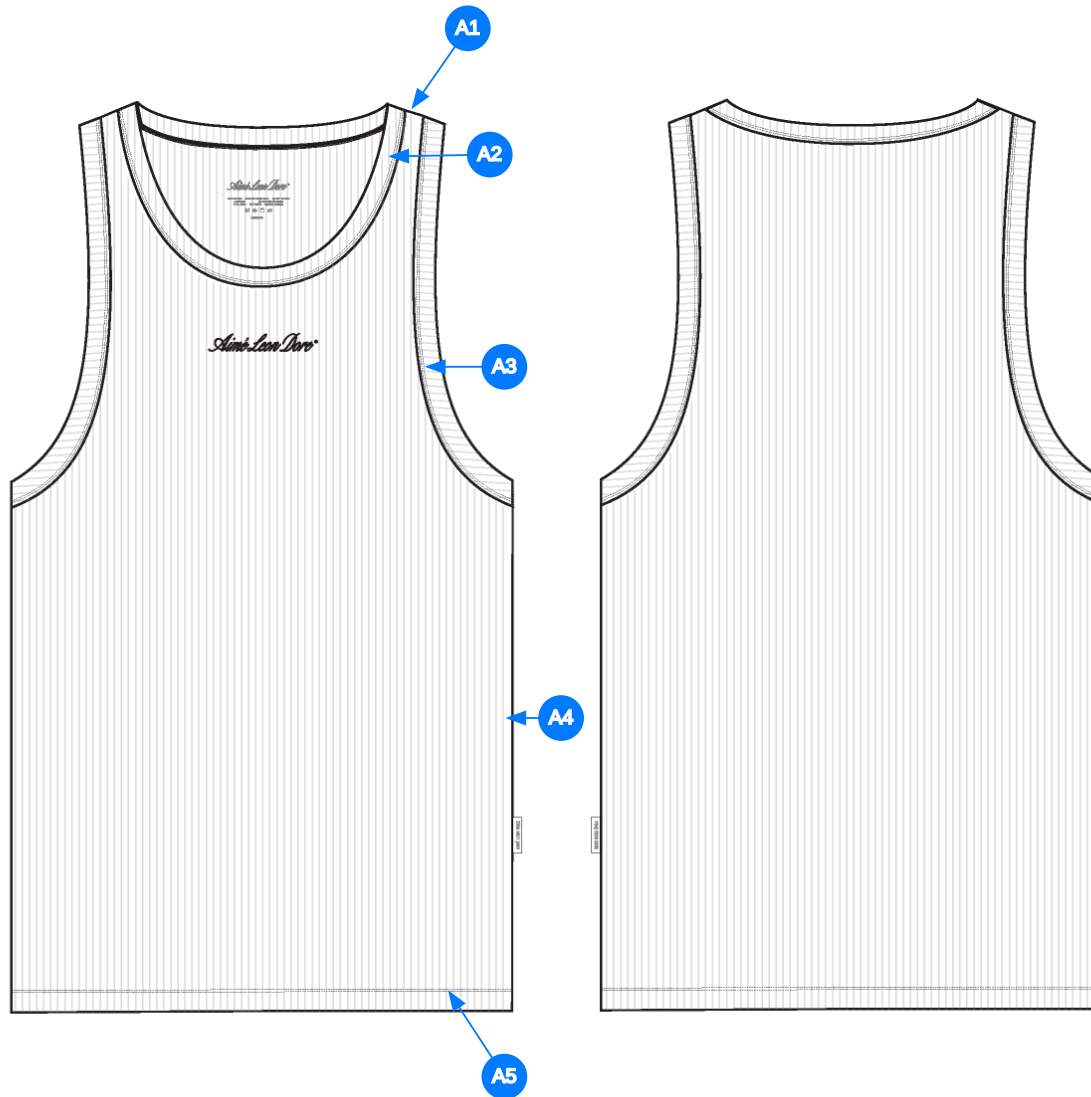
1. viền cổ bằng vải chính
2. viền nách bằng vải chính
3. hình thêu tại giữa ngực
4. nhãn cờ tại sườn ngoài



2\_Construction Details-1

Comments (5)

- A1** -CLEAN SEAM FINISH @ SHOULDER
- A2** -1/8" DNTS @ NECK
- A3** -1/8" DNTS @ ARMHOLE
- A4** -CLEAN SEAM FINISH @ SIDE SEAMS
- A5** -1/8" DNTS @ BOTTOM HEM - TURN BACK W/ COVERLOCK



1. may sạch tại vai
2. điều 2 kim 1/8" tại cổ
3. điều 2 kim 1/8" tại nách
4. may sạch tại đường may sườn
5. điều 2 kim 1/8" tại lai áo - gấp đôi vắt sổ mặt trong

3\_Stitching Details-1

Sample Size: M

POINT OF MEASURE	CODE	HOW TO MEASURE	CRITICAL	TYPE	TOLERANCE	M
Front Body Length	S&K01	HPS to bottom edge	true	Full	1/2 in	22 1/2 in
Back Body Length	S&K02	CB neck top edge to bottom edge	true	Full	1/2 in	22 in
Front Neck Drop	S&K04	HPS to Neck Top Edge	false	Full	1/8 in	4 1/4 in
Back Neck Drop	S&K05	HPS to Neck Top Edge	false	Full	1/8 in	1 in
Back Neck Width	S&K06	Edge to Edge	false	Full	1/4 in	6 1/2 in
Shoulder Slope	S&K08	Shoulder point perpendicular to HPS	false	Full	1/4 in	1/2 in
Binding Width	S&K460		false	Full	1/8 in	7/16 in
Strap Width @ Fold Line	JhhIMt	Edge to Edge	true	Full	0 in	2 in
Across Shoulder	S&K09	Edge to edge	false	Half	1/4 in	11 in
Across Front/Across Back Position from HPS	eos7YR		true	Full	0 in	6 in
Across Front Edge to Edge	S&K106	Edge to Edge	true	Full	1/4 in	9 1/2 in
Across Back Edge to Edge	S&K107	Edge to Edge	false	Full	1/4 in	9 1/2 in
Chest Width	S&K012	1" Below armhole- edge to edge	true	Half	1/4 in	13 1/2 in
Bottom Opening Width- At Edge	S&K013	At bottom edge	true	Half	1/4 in	12 1/2 in
Bottom Hem Height	S&K014	Bottom edge to stitch line or trim seam	false	Full	1/8 in	1/2 in
Armhole Drop	S&K016	Below HPS - measure perpendicular to armhole seam	false	Full	1/4 in	9 1/2 in
CF Artwork Placement below CF Neckline	S&K112	From Top Edge of Neck to Top Edge of Artwork	false	Full	1/8 in	1 3/4 in
Loop Label Placement at Sideseam	S&K023	Bottom edge to bottom of loop label, at the WL side seam	false	Full	1/8 in	5 in

## Development Notes - UA - Anastasiya Zolotova

CREATED ON MAY 2, 2025 3:59 PM

SS26CT074 Women's Script Tank

Date: 5/2/25

Status: Requesting 1st Proto

TD: Anastasiya

Fit: Please follow measurement page, construction page and sketch.

**-Please note because garment is bound at neck / armhole it is measured edge to edge at those points.**

-Please follow SS25CT027 Script Logo Tank for overall construction. Create new pattern for womens following measurement page and reference sample images.



fit: Làm theo trang thông số, trang cấu trúc và sketch

-lưu ý vì áo may viền tại cổ/ nách, nên đo từ mép đến mép

-tham khảo mã SS24CT027 cho tổng thể cấu trúc. làm rập cho womens theo trang thông số và hình mẫu tham khảo



Screen Shot 2025-05-02 at 11.45.13 AM.jpg

COMPONENT		QTY	3.  PROTO C
FABRIC			
1	<b>TT-RIB300_RIB</b> CODE: UA TANK RIB Placement: BODY, NECK AND ARMHOLE BINDING Supplier: UNAVAILABLE Weight: 300gsm		-  Bright White Custom Code: 11-0601 TCX  Price: 0.00
2	<b>ARTWORK</b> CODE: EMBROIDERY Placement: CF CHEST Notes: FOLLOW ARTWORK AND POM Supplier: Factory Sourced		- ARTWORK  Price: 0.00
LABEL AND TRIM PACKAGE			
3	<b>ALD Woven Loop Label</b> CODE: ALD-ML02 Placement: WL SIDE SEAM Notes: FOLLOW POM Supplier: Colonial		-  Parmesan Base / Gold Text  Price: 0.00
Components 3			Total 0.00