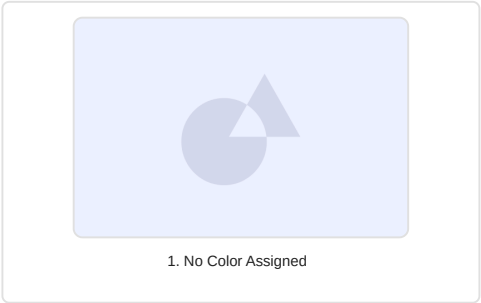


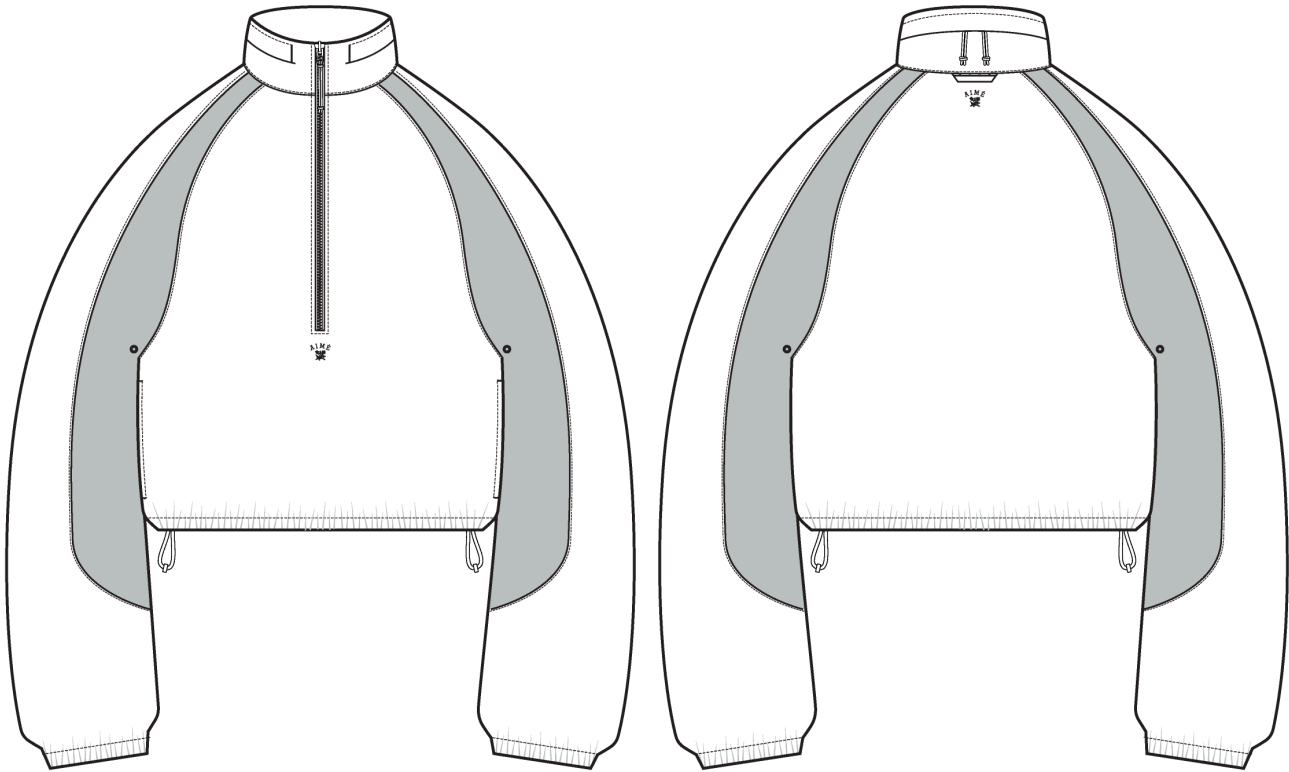
Cropped Nylon Pullover

Name	Cropped Nylon Pullover
Style No.	SS26WJ038
Division	Womens
Category	Outerwear
Season	Spring/Summer
Year	2026
Size Scale	M -Sample size

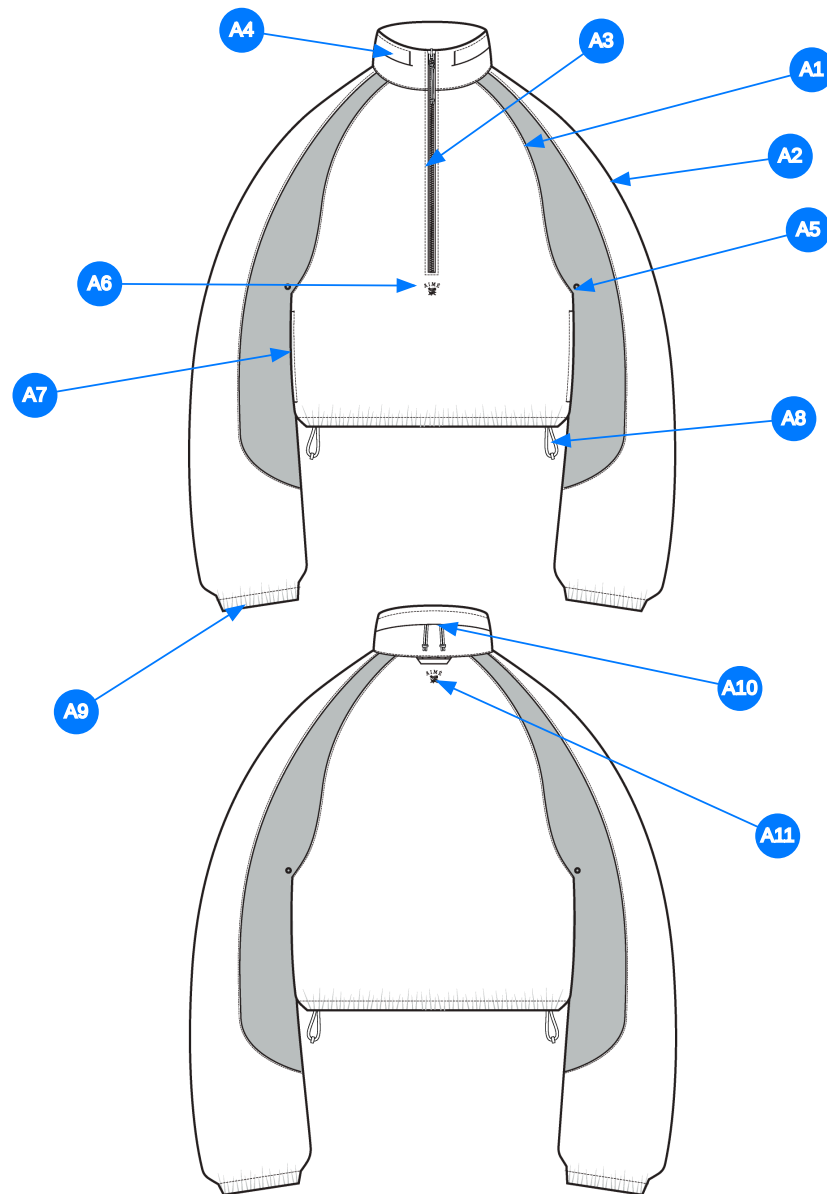
XS S M L XL XXL

Created by/Author 5/9/2025
Cristina Loukopoulos
cristina@aimeleondore.com





__1_B+W-1

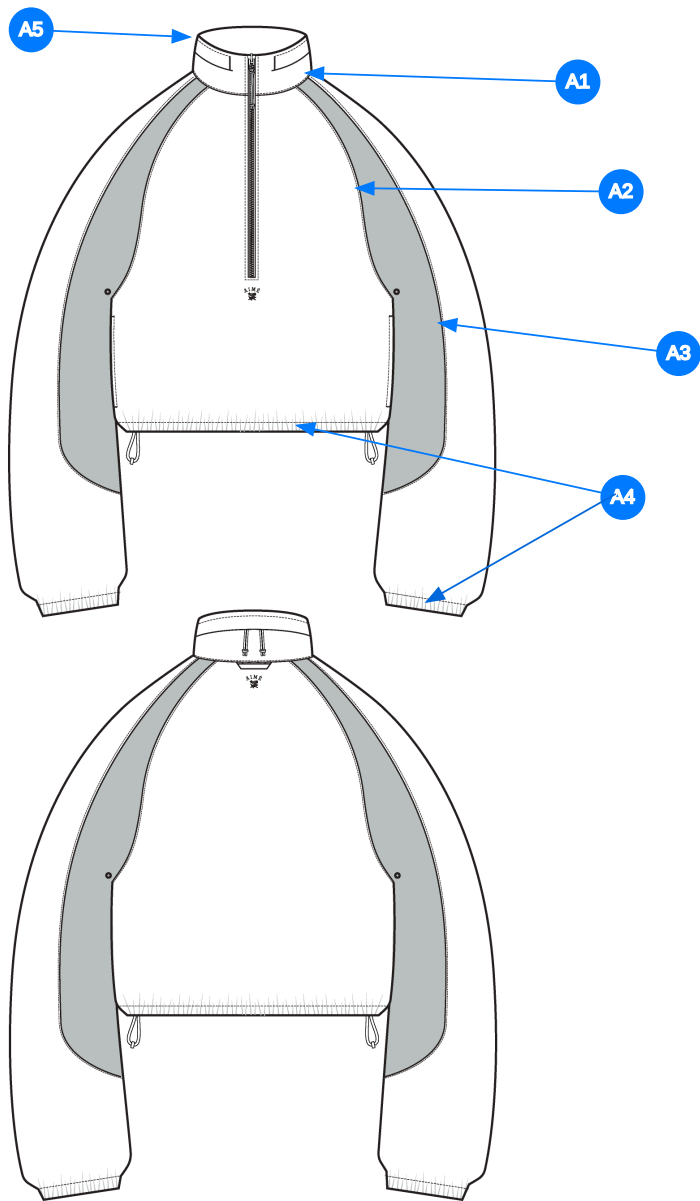


__3__ CONSTRUCTION DETAILS-1

Comments (11)

- A1 RAGLAN SEAM AND CONTRAST PANEL: MIMIC STYLE SS25WJ016.
- A2 TOP SLEEVE SEAM
- A3 5GG VISLON ZIPPER AT CF (NO INSIDE FACING)
- A4 STAND COLLAR W/ STOWAWAY HOOD AND 5GG ZIPPER CLOSURE.
- A5 EMBROIDERED EYELETS AT ARMHOLE (1 AT FRONT AND BACK, 4 TOTAL).
- A6 AIMÉ QUEENS CREST DIRECT EMBROIDERY 1/2" UNDER CF ZIPPER END.
- A7 ON-SEAM POCKETS W/ SELF POCKET BAGS
- A8 SELF TURNBACK HEM W/ BUNGEE AND 2 STOPPERS, 1 AT EACH SIDE SEAM.
- A9 SELF TURNBACK CUFFS W/ ELASTIC INSERTED.
- A10 ZIPPER CLOSURE WITH BUNGEE ENDS AT STOWAWAY HOOD.
- A11 AIMÉ QUEENS CREST DIRECT EMBROIDER 1/2" UNDER CB NECK SEAM.

1. phối và đường may raglan
2. đường may tay trên
3. dây kéo vislon răng 5 tại giữa trước (không có nẹp che mặt trong)
4. cổ đứng với nón giấu được và dây kéo đóng răng 5
5. thùy khuy tròn tại nách (1 cái tại nách trước và 1 cái tại nách sau, tổng 4 cái)
6. hình thêu cách đuôi dây kéo 1/2"
7. túi thẳng dọc đường sườn, lót túi bằng vải chính
8. lai áo gấp đôi bằng vải chính có thun tròn và 2 cục chặn mỗi bên sườn
9. lai tay gấp đôi bằng vải chính có thun bên trong
10. dây kéo tại nón có dây tape đầu dây kéo
11. hình thêu cách đường may giữa cổ sau 1/2"



Comments (5)

- A1 EDGESTITCH
- A2 1/8" STRADDLE STITCH
- A3 EDGESTITCH
- A4 1/2" TURNBACK W/ SNTS
- A5 1/8" SNTS

- 1. mí điều tại cổ
- 2. điều rã 1/8" tại raglan tay
- 3. mí điều tại phối tay
- 4. điều 1 kim 1/2" tại lai tay và lai áo
- 5. điều 1/8" mép cổ trên

__4_STITCHING DETAILS-1

Sample Size: M

POINT OF MEASURE	CODE	HOW TO MEASURE	CRITICAL	TYPE	TOLERANCE	M
FRONT BODY LENGTH	WV001	FROM HPS TO BOTTOM EDGE	true	Full	1/2 in	22 1/2 in
BACK BODY LENGTH	WV002	FROM CB NECK SEAM TO BOTTOM EDGE	true	Full	1/2 in	21 in
CF ZIPPER LENGTH	WV003	FROM ZIPPER TIP TO TIP	true	Full	1/4 in	11 in
FRONT NECK DROP	WV004	FROM HPS LEVEL STRAIGHT DOWN TO CF NECK SEAM	true	Full	1/8 in	3 in
BACK NECK DROP	WV005	FROM HPS LEVEL STRAIGHT DOWN TO CB NECK SEAM	true	Full	1/8 in	1 1/2 in
BACK NECK WIDTH	WV006	FROM SEAM TO SEAM AT BACK PANEL HPS LEVEL	true	Full	1/4 in	7 1/2 in
SHOULDER SLOPE - RAGLAN	WVRAG	MEAS. AT IMAG. SHOUDLER POINT 7 1/2" FROM CB, FTY GRADE POSITION FOR ALL OTHER SIZES	true	Full	1/8 in	1 3/8 in
FRONT RAGLAN SEAM FORWARD FROM HPS	WVRAG	MEAS. ALONG NECK SEAM	false	Full	1/8 in	2 in
BACK RAGLAN SEAM POSITION BACKWARD FROM HPS	WVRAG	MEAS. ALONG NECK SEAM	false	Full	1/8 in	2 in
ACROSS FRONT	WV010	MEASURE FROM A/H SEAM TO SEAM, 6" FROM HPS FOR M SIZE, FACTORY GRADE POS. FOR ALL OTHER SIZES	true	Full	1/4 in	10 in
ACROSS BACK	WV011	MEASURE FROM A/H SEAM TO SEAM, 6" FROM HPS FOR M SIZE, FACTORY GRADE POS. FOR ALL OTHER SIZES	true	Full	1/4 in	10 1/2 in
CHEST CIRCUMFERENCE	WV012	MEASURE 1" BELOW ARMHOLE	true	Full	1/2 in	53 in
BOTTOM OPENING CIRCUMFERENCE	WV	MEASURE AT BOTTOM HEM EDGE	true	Full	1/2 in	53 in
BOTTOM HEM TOPSTITCHING HEIGHT	WV016		false	Full	1/8 in	5/8 in
ARMHOLE DROP	WV017	FROM HPS LEVEL STRAIGHT DOWN TO UNDERARM SEAM	true	Full	1/4 in	13 1/2 in
BICEP CIRCUMFERENCE	WV018	MEASURE AT 1" BELOW ARMHOLE	true	Full	1/4 in	25 1/2 in
FOREARM CIRCUMFERENCE	WV019	MEASURE AT 9" ABOVE SLEEVE HEM EDGE	true	Full	1/4 in	14 1/2 in
SLEEVE OPENING CIRCUMFERENCE, STRETCHED	WV020-1	MEASURE AT SLEEVE EDGE	true	Full	1/4 in	13 in
SLEEVE OPENING CIRCUMFERENCE, RELAXED	WV020		true	Full	1/4 in	8 1/2 in
SLEEVE LENGTH	WV026	3PT MEAS. FROM CB NECK, ARMHOLE TO SLEEVE HEM EDGE	true	Full	1/2 in	32 1/2 in
SLEEVE HEM TOPSTITCHING HEIGHT	WV		false	Full	1/8 in	1 1/4 in
COLLAR HEIGHT AT CF	WV022		false	Full	1/8 in	2 3/4 in
COLLAR HEIGHT AT CB	WV023		false	Full	1/8 in	3 in
COLLAR LENGTH ALONG OUTER EDGE	WV025		false	Full	1/4 in	19 in
COLLAR ZIPPER LENGTH	EUQpiU		false	Full	1/4 in	15 in
HOOD HEIGHT AT OPENING	WVHOOD	MEASURE FROM NECK SEAM TO TOP EDGE	false	Full	1/4 in	0 in
HOOD HEIGHT FROM HPS TO TOP EDGE	WVHOOD		false	Full	1/4 in	0 in
HOOD WIDTH 6" BELOW TOP EDGE	WVHOOD		false	Half	1/4 in	0 in
HOOD CENTER PANEL WIDTH	WVHOOD	AT BACK NECK SEAM	false	Full	1/4 in	0 in
HOOD DRAWCORD LENGTH, TOTAL	WVHOOD		false	Full	1 in	0 in
SIDE SEAM ON-SEAM POCKET POSITION ABOVE BOTTOM HEM EDGE	zU6HYy		false	Full	1/8 in	2 in
SIDE SEAM ON-SEAM POCKET OPENING LENGTH	m7KsVB		false	Full	1/4 in	5 1/2 in

Development - Hyeyoung Cho

CREATED ON MAY 7, 2025 8:03 PM

Date : 5/7/25

TD : Hyeyoung Cho

Status : Submit 1st Proto

Development notes :

1. Create a pattern following reference sample and sketches. All spec measurements reflect the reference sample.
2. Shorten the sleeve length as spec.
3. Add a stow away hood.
 - a. Make 2 piece hood without center panel.
 - b. Do not add drawcord or bungee cord to the hood opening on the 1st proto.
 - c. Please use factory's women's hood measurements. Will review the 1st proto and add hood meas. when sending out 1st proto comments.
4. Increase the CF zipper by 1/2" from the sample.
5. Add on-seam pockets to side seams. Stitch down(or tach down) the pocket bags to bottom hem seam. Pocket bag top edge will be loose.

1. làm rập theo mẫu tham khảo và sketches. Tất cả các thông số kỹ thuật đều dựa trên mẫu tham khảo.

2. rút ngắn chiều dài tay áo như thông số

3. thêm nón giấu

- làm nón 2 mảnh không có bán thành phẩm giữa

- không thêm dây luồn hoặc dây thun tròn tại miệng nón trên mẫu proto

- phòng kỹ thuật cho thông số nón trên mẫu proto

4. tăng dài dây kéo giữa trước thêm 1/2" từ mẫu

5. thêm túi sườn tại đường may sườn, may cố định (hoặc chần) lót túi vào đường may lai áo. mép lót túi trên sẽ để lỏng



Screenshot 2025-05-07 at 4.01.47 PM.jpg

COMPONENT		QTY	1. NO COLOR ASSIGNED
1	LEEDS CODE: LEEDS Placement: BODY / CONTRAST PANEL @ SLEEVES / STOWAWAY HOOD / POCKET BAGS / LOCKER LOOP @ EXTERIOR CB NECK Notes: BODY OPTION 1 Supplier: LEMAR Width: 145 CMS Weight: 95GRS / M2 Yarn Construction: WARP: 78 / WEFT: 185 1993,6 DENSITY Country of Origin: PORTUGAL		Not used
2	GA10066SC CODE: GA10066SC Placement: BODY / CONTRAST PANEL @ SLEEVES / STOWAWAY HOOD / POCKET BAGS / LOCKER LOOP @ EXTERIOR CB NECK Notes: BODY OPTION 2		Not used
3	IN DEV CODE: TBD Placement: LINING @ BODY / SLEEVES Notes: TBD 100% POLY MESH QUALITY, AROUND 60GSM - PLEASE PROCEED WITH LOCAL OPTION FOR APPROVAL		Not used
4	YKK VISLON CLOSED END ZIPPER CODE: TBD Placement: @ CF Supplier: YKK		Not used SIZE: 5GG
5	YKK Zipper Tape CODE: YKK Placement: @ CF ZIPPER		Not used
6	IN DEV CODE: TBD Placement: @ CF ZIPPER Notes: PLEASE PROCEED WITH COMPATIBLE ZIPPER SLIDER FOR 1ST PROTO		Not used
7	YKK COIL CLOSED END ZIPPER CODE: TBD Placement: @ STOWAWAY HOOD Supplier: YKK Country of Origin: China		Not used SIZE: 3GG
8	YKK Zipper Tape CODE: YKK Placement: @ STOWAWAY HOOD ZIPPER		Not used
9	IN DEV CODE: TBD Placement: @ STOWAWAY HOOD ZIPPER Notes: PLEASE PROCEED WITH COMPATIBLE ZIPPER SLIDER FOR 1ST PROTO		Not used
10	THREAD EYELET CODE: THREAD EYELET Placement: 2 @ EACH UNDERARM Supplier: Factory Sourced		Not used
11	ELASTIC CODE: ELASTIC Placement: @ INTERIOR SLEEVE CUFFS / HEM Supplier: Factory Sourced		Not used WIDTH: 1 1/4"
12	IN DEV CODE: TBD Placement: @ INTERIOR HEM / STOWAWAY HOOD Notes: TBD 2.5MM BUNGEE CORD; PROCEED WITH LOCAL OPTION FOR PROTO		Not used
13	IN DEV CODE: TBD Placement: 1 @ EACH BUNGEE CORD END Notes: CYLINDER CORD LOCK; PLEASE FOLLOW REFERENCE PHOTO AND PROCEED WITH LOCAL OPTION FOR PROTO		Not used
14	IN DEV CODE: TBD Placement: 1 @ EACH BUNGEE CORD END Notes: PLASTIC SQUARE BEAD; PLEASE FOLLOW REFERENCE PHOTO AND PROCEED WITH LOCAL OPTION FOR PROTO		Not used

COMPONENT		QTY	1. NO COLOR ASSIGNED
15	IN DEV CODE: TBD Placement: 1 @ EACH BUNGEE CORD EXIT Notes: 14L METAL EYELET; PROCEED WITH LOCAL OPTION FOR PROTO		Not used
16	IN DEV CODE: TBD Placement: @ CYLINDER CORD LOCK Notes: 1/4" NYLON GROSGRAIN; PLEASE FOLLOW REFERENCE PHOTO AND PROCEED WITH LOCAL OPTION FOR PROTO		Not used
17	ARTWORK CODE: EMBROIDERY Placement: UNDER CF ZIPPER Notes: TBD A/W Supplier: Factory Sourced		Not used
18	ARTWORK CODE: EMBROIDERY Placement: EXTERIOR CB NECK Notes: TBD A/W Supplier: Factory Sourced		Not used
		Components 18	Total 0.00