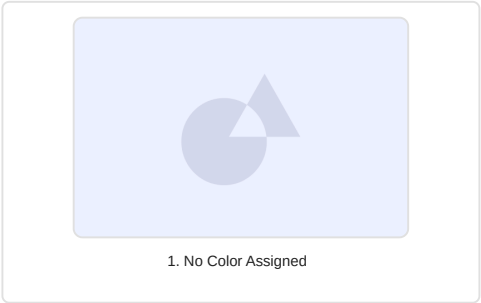
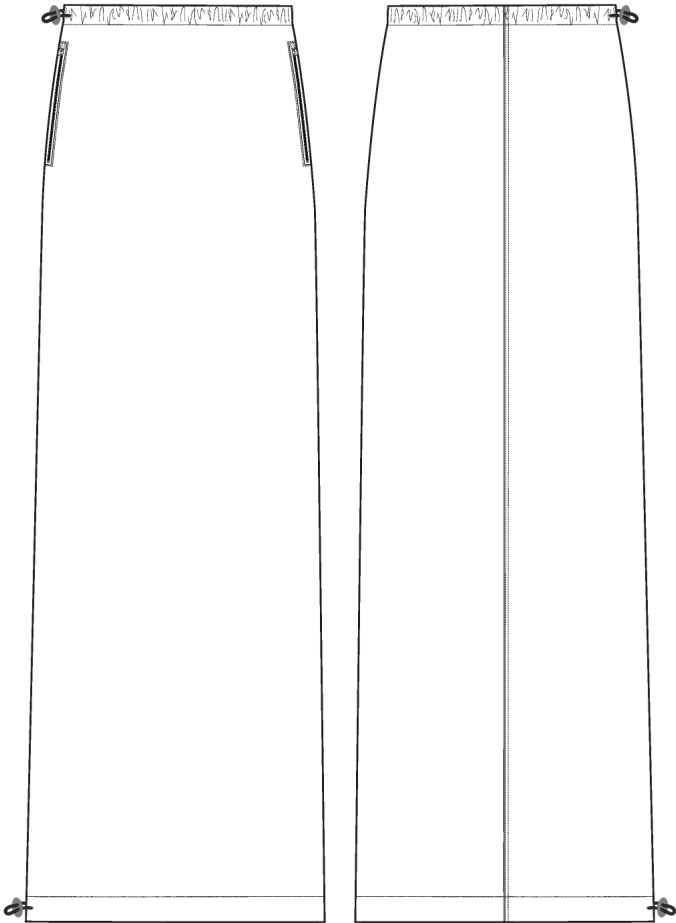


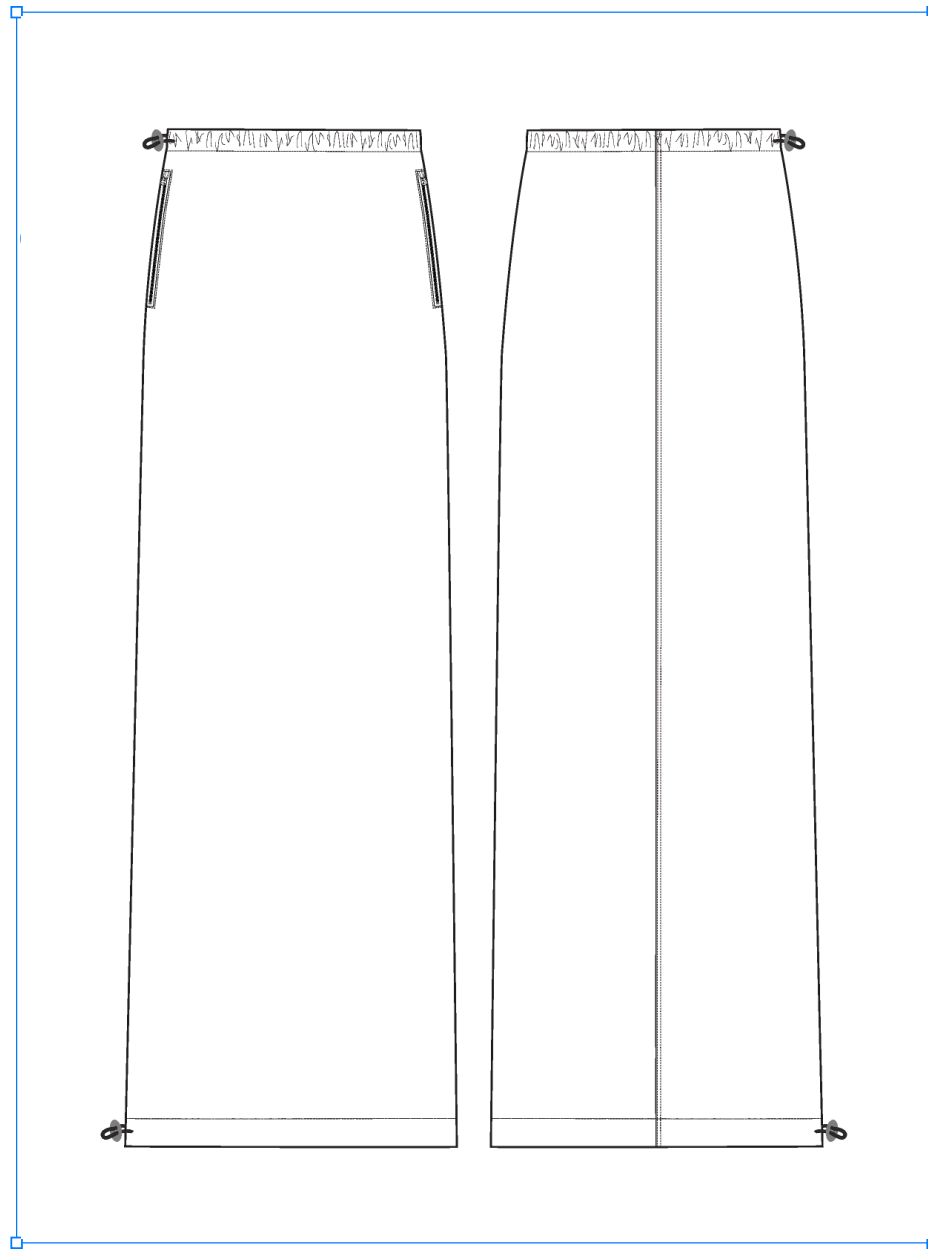
Nylon Skirt

Name	Nylon Skirt
Style No.	SS26WS000
Division	Womens
Category	Skirts
Season	Spring/Summer
Year	2026
Size Scale	M -Sample size
	XS S M L XL XXL
Created by/Author	5/9/2025 Cristina Loukopoulos cristina@aimeleondore.com





\_\_1\_B+W-1

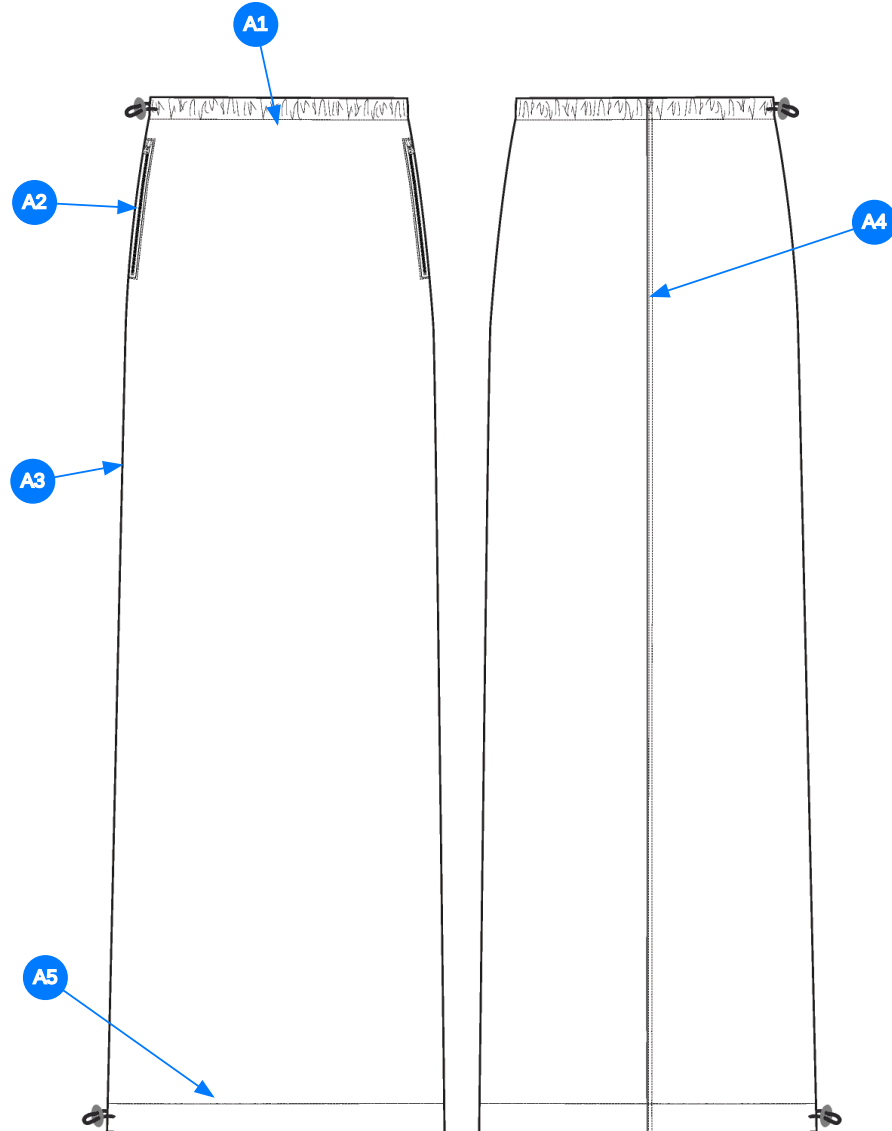


\_\_3\_\_ CONSTRUCTION DETAILS-1

Comments (5)

- A1** SELF TURNBACK WAISTBAND W/ SNTS
- A2** BUNGEE CORD W/ ADJUSTER AT WEARER'S RIGHT WAIST SIDE SEAM
- A3** BUNGEE CORD W/ ADJUSTER AT WEARER'S RIGHT HEM SIDE SEAM
- A4** 5GG VISLON ZIPPER POCKETS ON-SEAM W/ SELF POCKET BAGS
- A5** CB SEAM

1. điều 1 kim tại lưng quần gấp đôi bằng vải chính
2. dây thun tròn với con chặn để điều chỉnh tại sườn bên phải
3. dây thun tròn với con chặn để điều chỉnh tại sườn bên trái
4. dây kéo vislon răng 5 tại túi sườn, lót túi bằng vải chính
5. đường may giữa sau



Comments (5)

- A1** 3/4" WAISTBAND W/ SNTS
- A2** EDGESTITCH
- A3** 1/8" DNTS AT SIDE SEAMS
- A4** 1/8" DNTS AT CB SEAM
- A5** 1" HEM W/ SNTS

1. điều 1 kim 3/4" lưng
2. mí điều túi sau
3. điều 2 kim 1/8" tại đường may sườn
4. điều 2 kim 1/8" tại đường may giữa sau
5. điều 1 kim 1" tại lai

\_\_4\_STITCHING DETAILS-1

Sample Size: M

POINT OF MEASURE	CODE	HOW TO MEASURE	CRITICAL	TYPE	TOLERANCE	M
WAIST TOPSTITCHING HEIGHT	WV101		true	Full	1/8 in	3/4 in
FRONT BODY LENGTH ALONG CF EDGE	WVSKIRT	FROM WB TOP EDGE TO BOTTOM HEM EDGE	true	Full	1/2 in	35 in
BACK BODY LENGTH ALONG CB EDGE	WVSKIRT	FROM WB TOP EDGE TO BOTTOM HEM EDGE	false	Full	1/2 in	36 in
WAIST CIRCUMFERENCE - RELAXED	WV102	ACROSS TOP EDGE OF WAISTBAND	true	Full	1/2 in	29 in
WAIST CIRCUMFERENCE - STRETCHED	WV103	ACROSS THE CENTER OF WAISTBAND	true	Full	1/2 in	35 1/2 in
LOW HIP POSITION BELOW WB TOP EDGE	WV107	MEAS. X" DOWN FROM TOP EDGE OF WAISTBAND	true	Full	0 in	8 in
LOW HIP CIRCUMFERENCE	WV108	3PT MEAS. - FROM WR SIDE SEAM, CF, TO WL SIDE SEAM	true	Full	1/2 in	44 1/4 in
BOTTOM OPENING CIRCUMFERENCE	WV	MEASURE AT BOTTOM HEM EDGE	true	Full	1/2 in	58 in
BOTTOM OPENING HEM TOPSTITCHING HEIGHT	WV		false	Full	1/8 in	1 in
FRONT POCKET PLACEMENT BELOW WB TOP EDGE	WV		false	Full	1/8 in	1 1/2 in
FRONT POCKET OPENING LENGTH	WV FRONT POCKET	MEASURE ALONG SIDE SEAM FROM WB SEAM	false	Full	1/4 in	6 3/4 in
FRONT POCKET ZIPPER LENGTH	WV		false	Full	1/4 in	6 1/2 in
FRONT POCKET BAG LENGTH	WV121	MEAS. FROM SEAM TO POCKET BAG EDGE – FACTORY GRADE FOR PRODUCTION	false	Full	1/4 in	11 in
FRONT POCKET BAG WIDTH	WV122	MEASURE FROM SEAM TO WIDEST EDGE – FACTORY GRADE FOR PRODUCTION	false	Full	1/4 in	7 in

## Development - 1st Proto Request - Kilsy Morocho

CREATED ON MAY 6, 2025 6:45 PM

Status: Submit 1st Proto

Development Notes:

1. Create a pattern based on the measurements provided.
2. See reference photo for fit balance. *Please note that we are not sending this reference sample.*

1. làm rập dựa vào bảng thông số
2. xem hình tham khảo cho fit.



SS26WS000 NYLON SKIRT.jpg



COMPONENT		QTY	1. NO COLOR ASSIGNED
1	<b>LEEDS</b> CODE: LEEDS Placement: BODY / POCKET BAGS Supplier: LEMAR Width: 145 CMS Weight: 95GRS / M2 Yarn Construction: WARP: 78 / WEFT: 185 1993,6 DENSITY Country of Origin: PORTUGAL		Not used
2	<b>ELASTIC BUNGEE - UA</b> CODE: # EB-001 Placement: INTERIOR WB / INTERIOR HEM Supplier: UNAVAILABLE Country of Origin: VIETNAM		Not used SIZE: 2.5MM
3	<b>IN DEV</b> CODE: TBD Placement: @ BUNGEE ENDS Notes: TBD SILICONE BUNGEE STOPPER; PLEASE SEND LOCAL OPTIONS FOR APPROVAL		Not used
4	<b>IN DEV</b> CODE: TBD Placement: @ BUNGEE ENDS Notes: TBD PLASTIC BEAD; PLEASE SEND LOCAL OPTIONS FOR APPROVAL		Not used
5	<b>THREAD EYELET</b> CODE: THREAD EYELET Placement: BUNGEE EXITS Supplier: Factory Sourced		Not used
6	<b>YKK VISLON CLOSED END ZIPPER</b> CODE: TBD Placement: 1 @ EACH HAND POCKET Supplier: YKK		Not used SIZE: 5GG
7	<b>YKK Zipper Tape</b> CODE: YKK Placement: 1 @ EACH HAND POCKET ZIPPER		Not used
8	<b>IN DEV</b> CODE: TBD Placement: 1 @ EACH HAND POCKET ZIPPER Notes: TBD ZIPPER SLIDER; PLEASE PROCEED WITH COMPATIBLE SLIDER FOR 1ST PROTO		Not used
		Components 8	Total 0.00