



# 74 IS WAR TEE

## PRODUCT INFORMATION

SEASON : 2025

STYLE NO.	CRTZ_1554	VENDOR	UNAVAILABLE
STYLE NAME	74 IS WAR TEE	CATEGORY	JERSEY
DESIGNER	JM	SIZE RUN	S, M, L, XL, XXL

### FIT/STYLE REFERENCE

SEASON	STYLE NO.	STYLE NAME	REFERENCE DETAIL
-		CRTZ BLANK TEE	FABRIC, TRIMS, FIT/SPEC
	-		

### FABRIC(S)

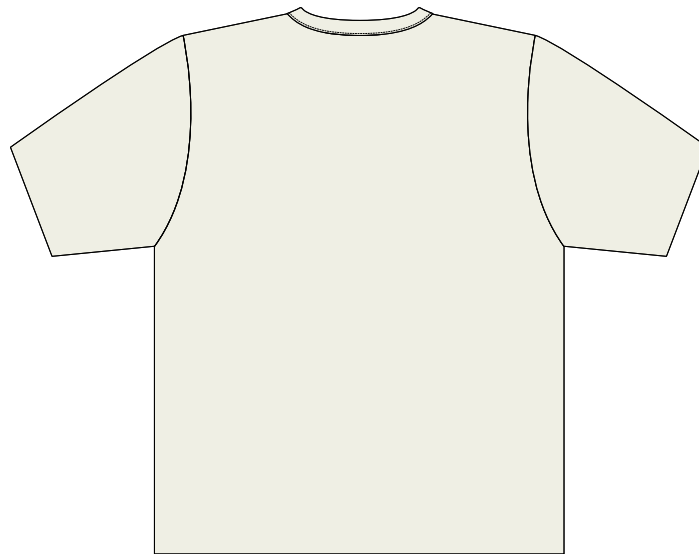
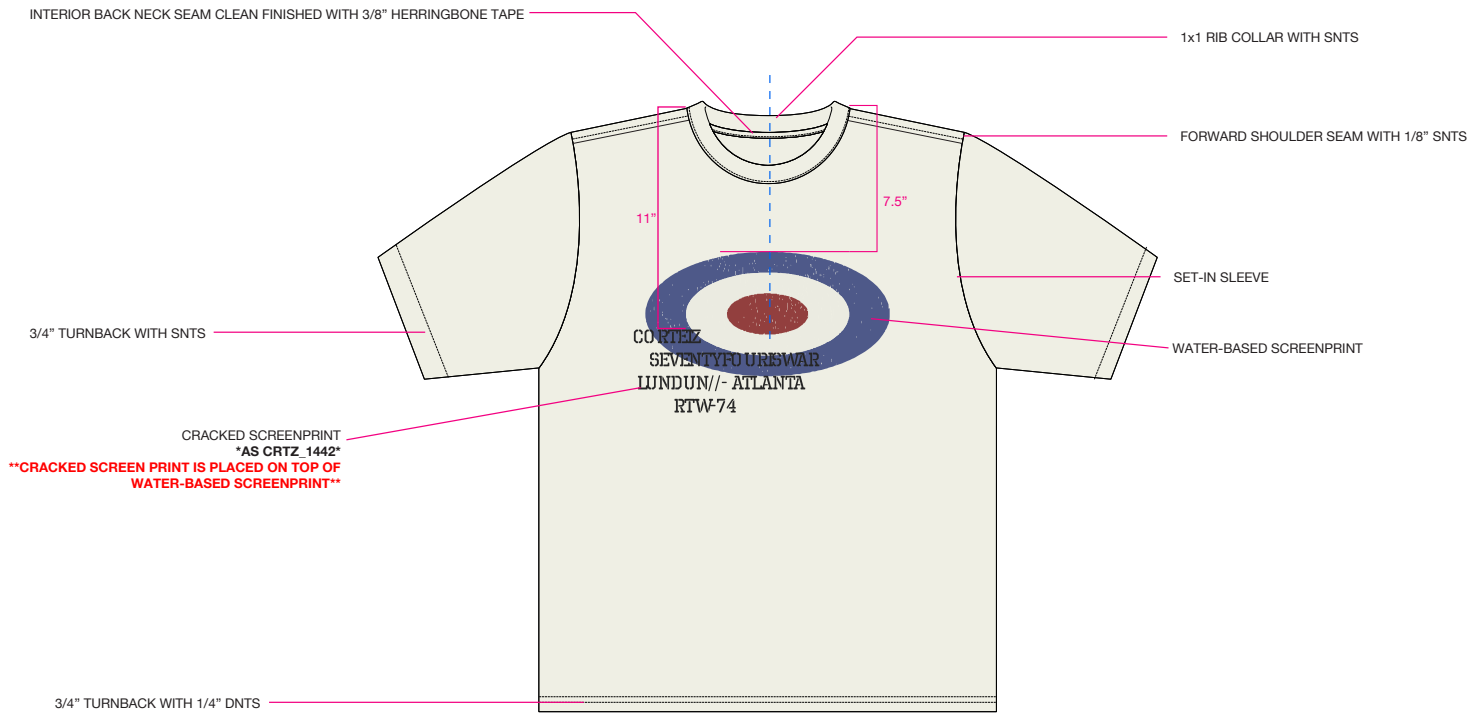
MAIN BODY	100% COTTON (190 GSM) *CRTZ BLANKS QUALITY*		
RIBBING	1x1 RIBBING		
EMBELLISHMENT	SCREENPRINT		

### COLORWAY FABRIC AND TRIMS CHART

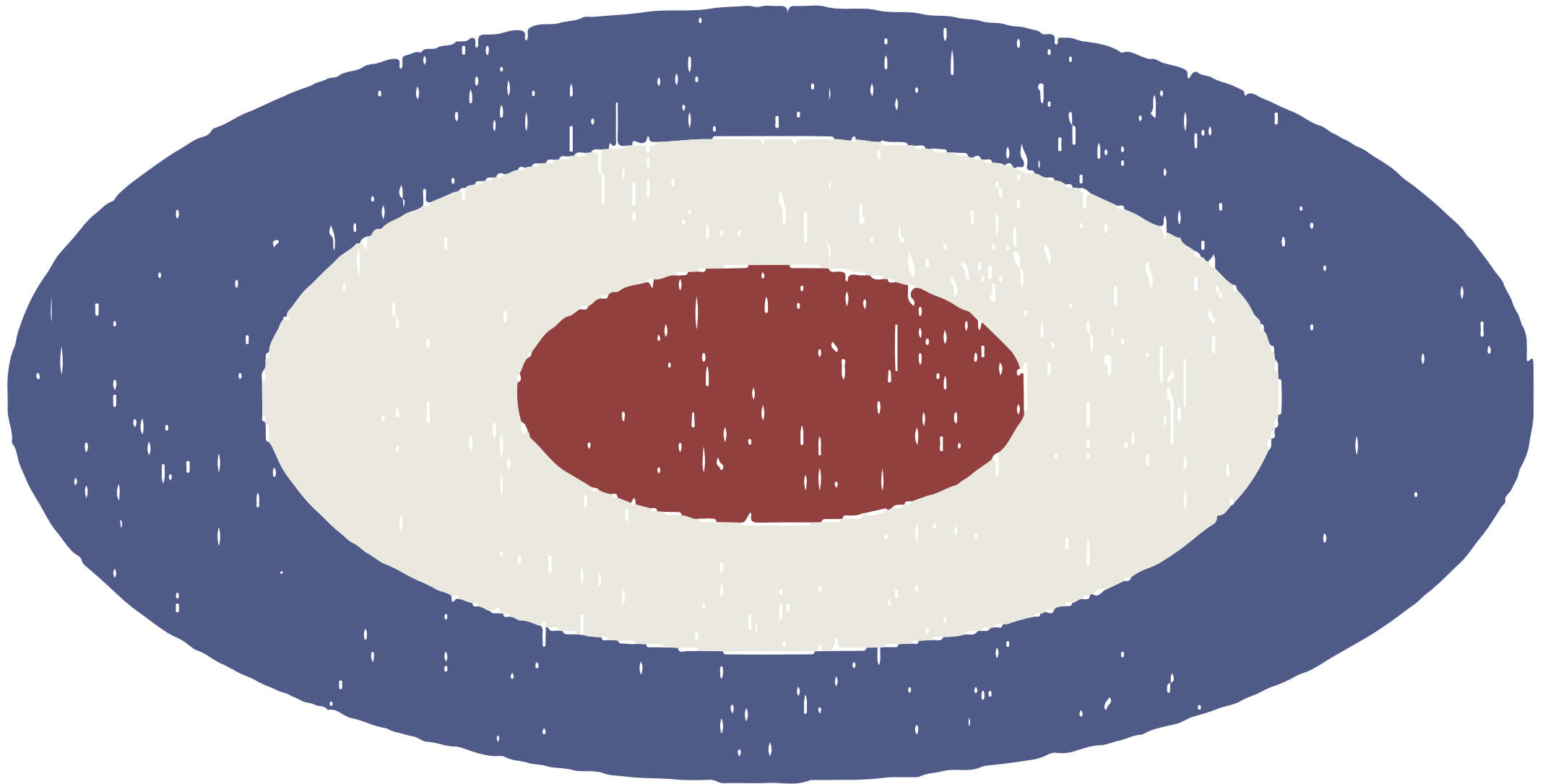
	COLORWAY 1	COLORWAY 2	COLORWAY 3
COLORWAY	CREAM	BLACK	
MAIN BODY	11-4300 TPG	STOCK/AVAILABLE BLACK	
RIBBING	DTM MAIN BODY	DTM MAIN BODY	
NECK TAPE	DTM BODY	DTM BODY	
THREAD	DTM BODY	DTM BODY	
SCREENPRINTS	SEE ART PG.	SEE ART PG.	

	COLORWAY 4	COLORWAY 5	COLORWAY 6
COLORWAY			
FLEECE			
RIBBING			
NECK TAPE			
THREAD			
SCREENPRINTS			

**\*PLEASE APPLY HEAVY ENZYME WASH FOR WORN-IN/BEAT UP EFFECT\***



WATER-BASED SCREEPRINT @ CF  
100% ACTUAL SIZE  
\*SEE DRAWING FOR EXACT PLACEMENT



---

11" W x 5.6137 in

ALL COLORWAYS

PRINT COLOR 1	11-4300 TCX
PRINT COLOR 2	18-3932 TCX
PRINT COLOR 3	18-1531 TCX





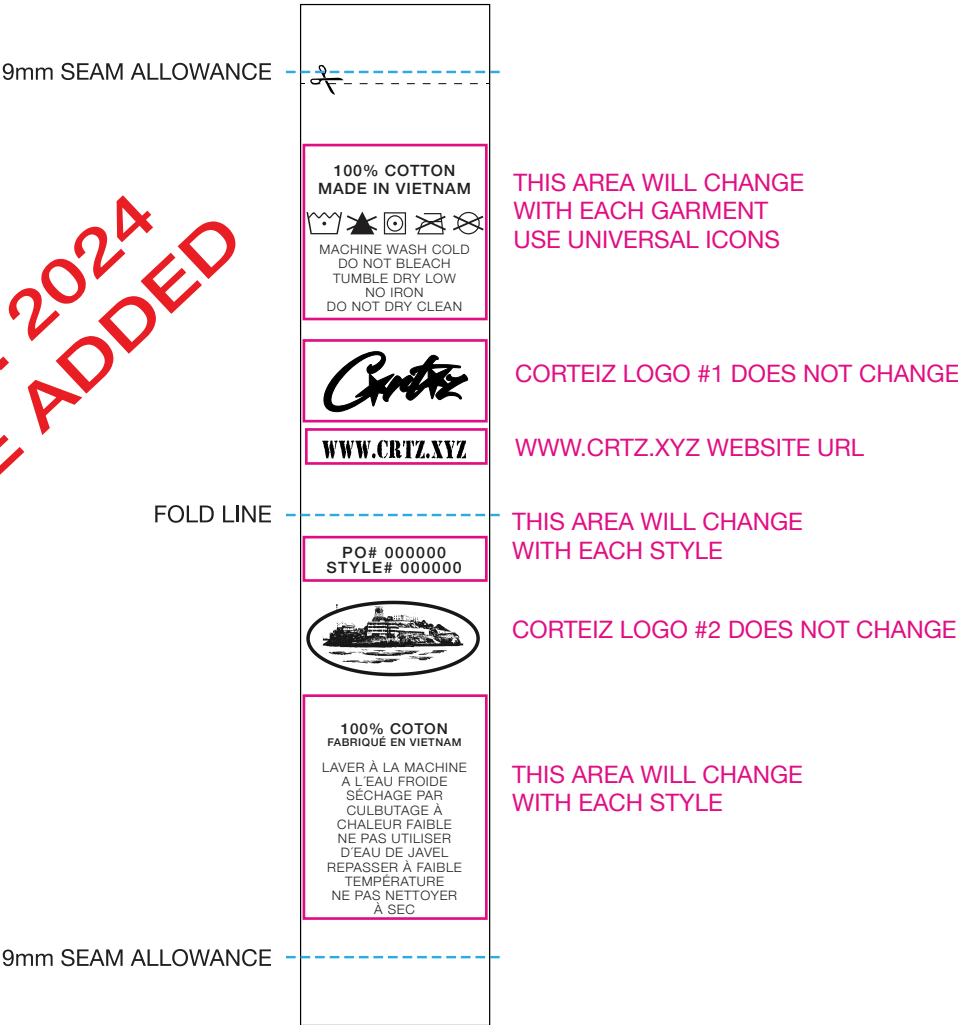
CRTZ

CARE/CONTENT/COO LABEL

SATIN LABEL  
1 COLOR PRINT IN BLACK  
135mm x 25mm

PLEASE NOTE HEIGHT OF LABEL MAY CHANGE  
DEPENDING ON AMOUNT OF WASH INSTRUCTIONS  
THIS IS ONLY A MOCK UP

REVISED: 2024  
WEBSITE ADDED



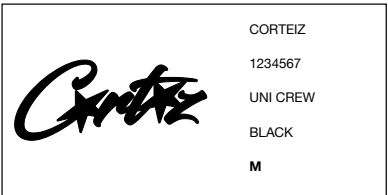
STOCKER LABEL GUIDELINES

\*FOR USE ON OUTSIDE OF POLY BAG

\*LAYOUT IS OK TO CHANGE, BUT PLEASE TRY TO MATCH BELOW EXAMPLE  
AS CLOSE AS POSSIBLE WITH ALL INFORMATION INCLUDED



THIS AREA WILL CHANGE  
WITH EACH STYLE



EXAMPLE WITH SPECIFIC  
STYLE INFORMATION








PLACEMENT EXAMPLE



CORTEIZ

TRIM CHART

CODE	NAME	IMAGE	PLACEMENT	QTY
-----	CORTEIZ BRAND: CARE/CONTENT SATIN LOOP LABEL		INTERIOR - WEARER'S LEFT SIDE	1
-----	POLY BAG STICKER LABEL		ON EXTERIOR RIGHT LOWER CORNER OF GARMENT POLY BAG	1
-----	SAMPLES ONLY			
-----	CORTEIZ BRAND TYVEK SAMPLE LABEL <b>**FACTORY TO DEVELOP**</b>		INTERIOR CENTER BACK NECK SEAM	1
-----	POLY BAG (100% RECYCLED) 370mmX470mm_CORTEIZ		FOLD GARMENT AND ENCLOSE IN POLY BAG	1
-----	<b>FACTORY DEVELOPED</b> CRTZ CENTER FOLD WOVEN LABEL - BLANK TEES 2023-2024		INTERIOR CENTER BACK WAISTBAND	1
-----				
-----				



74 IS WAR SLEEVELESS CREWNECK

WOVEN LABEL ARTWORK

CENTER FOLD DAMASK WOVEN LABEL  
SHOWN @ 100% ACTUAL SCALE



XS

- 19-6311 TPG
- 18-1763 TPG
- 13-0859 TPG

SMALL

- 19-3952 TPG
- 18-1763 TPG
- 13-0859 TPG
- BLACK

MEDIUM

- BLACK
- 11-4800 TPG

LARGE

- 18-1763 TPG
- BLACK
- 13-0859 TPG

XL

- 11-4300 TPG
- 19-3952 TPG
- 18-1763 TPG

XXL

- 13-0859 TPG
- BLACK



IN NỮT GIỐNG MÃ CRTZ\_1442 , STYLE UA C0023-CRW013

CRACKED SCREENPRINT (AS CRTZ\_1442) THROUGHOUT GARMENT  
100% ACTUAL SIZE  
\*SEE DRAWING FOR EXACT PLACEMENT, MATCH AS CLOSELY AS POSSIBLE  
\*\*GREY BACKGROUND IS FOR VISUAL AID ONLY

CORTEIZ  
SEVENTYFOUR IS WAR  
LONDON// - ATLANTA  
RTW-74

8.5" W x 3.8043" H

	COLORWAY 1	COLORWAY 2
PRINT COLOR	CREAM	BLACK
	19-4007 TPG	11-4800 TPG

\*NOTE THAT THE CRACKED SCREENPRINT ABOVE IS PLACED OVER THE WATER-BASED  
SCREENPRINT @ WEARER'S FRONT CHEST\*