



All Over Floral Wreath Sweatpant - Style #SS26BAS1452
Mens, Sweatpant, Spring/Summer, 2026

Summary
10-27-2025

| | | | |
|-------------|-----------------------|------------------------------|----------------|
| DENIM TEARS | PANTS: P006 SWEATPANT | SEASON: SP26 | DESIGNER: TINA |
| | FACTORY: FACTORY | COLLECTION: OUR LADY LIBERTY | VARIANTS: 1 |
| SKETCH | | | |

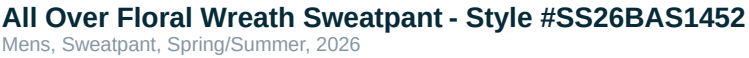


| | |
|-------------------|---|
| Name | All Over Floral Wreath Sweatpant |
| Style No. | SS26BAS1452 |
| Description | All Over Floral Wreath Sweatpant |
| Division | Mens |
| Category | Sweatpant |
| Season | Spring/Summer |
| Year | 2026 |
| Size Scale | <div>M</div> -Sample size |
| | <div>XS</div> <div>S</div> <div>M</div> <div>L</div> <div>XL</div> <div>XXL</div> |
| Factory | Un-Available |
| Created by/Author | 10/27/2025 Genny Mayden genny@denimtears.com |

DENIM TEARS CONFIDENTIAL

UPDATED: XX/XX/XXXX

All Over Floral Wreath Sweatpant



1. No Color Assigned

| | |
|------------------|---------|
| Style Color Code | Not Set |
| Carryover/New | Not Set |



| | | | |
|-------------|-----------------------|------------------------------|----------------|
| DENIM TEARS | PANTS: P006 SWEATPANT | SEASON: SP26 | DESIGNER: TINA |
| | FACTORY: FACTORY | COLLECTION: OUR LADY LIBERTY | VARIANTS: 1 |
| SKETCH | | | |



| | |
|--------------------------|---------------------|
| DENIM TEARS CONFIDENTIAL | UPDATED: XX/XX/XXXX |
|--------------------------|---------------------|

SP26-P006_Sweatpant (1)-1



| | | | |
|-------------|-----------------------|------------------------------|----------------|
| DENIM TEARS | PANTS: P006 SWEATPANT | SEASON: SP26 | DESIGNER: TINA |
| | FACTORY: FACTORY | COLLECTION: OUR LADY LIBERTY | VARIANTS: 1 |
| COLORWAYS | | | |

FRONT



BACK



BLACK

SELF: BLACK
LINING: BLACK
DRAWCORD: BLACK
ELASTIC: BLACK
EMBROIDERED EYELET: BLACK
STITCH: TONAL

DENIM TEARS CONFIDENTIAL

UPDATED: XX/XX/XXXX

SP26-P006_Sweatpant (1)-2



| | | | |
|-----------------|-----------------------|------------------------------|----------------|
| DENIM TEARS | PANTS: P006 SWEATPANT | SEASON: SP26 | DESIGNER: TINA |
| | FACTORY: FACTORY | COLLECTION: OUR LADY LIBERTY | VARIANTS: 1 |
| COLOR STANDARDS | | | |

| ITEM | PLACEMENT | QUANTITY | SIZE | COLORWAY 1 | COLORWAY 2 | | |
|--|--|----------|-----------|--|------------|--|--|
| 100% COTTON - XXXX | SELF A: MAIN BODY | | | <div>BLACK - JET BLACK 19-0303 TCX</div> | | | |
| 100% COTTON JERSEY - XXX | LINING: POCKET BAG | | | <div>BLACK - JET BLACK 19-0303 TCX</div> | | | |
| BASKETWEAVE FLAT DRAWCORD - 100% HIGH DENSITY COTTON | TRIM A: WAISTBAND | 1 | 1/4" WIDE | <div>BLACK - JET BLACK 19-0303 TCX</div> | | | |
| ELASTIC BAND | TRIM B: WAISTBAND | 1 | | <div>BLACK</div> | | | |
| ELASTIC BAND | TRIM C: HEM | 2 | | <div>BLACK</div> | | | |
| THREAD 1: | SELF A: MAIN BODY, EMBROIDERED EYELET | | | <div>BLACK - JET BLACK 19-0303 TCX</div> | | | |
| WASH: | GARMENT | | | 45 MIN ENZYME WASH & SOFTENER | | | |
| | | | | | | | |
| | | | | | | | |
| | | | | | | | |
| | | | | | | | |
| | | | | | | | |

| | |
|--------------------------|---------------------|
| DENIM TEARS CONFIDENTIAL | UPDATED: XX/XX/XXXX |
|--------------------------|---------------------|


SP26-P006_Sweatpant (1)-4
1. No Color Assigned



DENIM TEARS

| | | |
|-----------------------|------------------------------|----------------|
| PANTS: P006 SWEATPANT | SEASON: SP26 | DESIGNER: TINA |
| FACTORY: FACTORY | COLLECTION: OUR LADY LIBERTY | VARIANTS: 1 |

CONSTRUCTION



1/4" wide cotton drawcord w/
single knotted end

embroidered 5/8" eyelets
center to center in interior

bendback WB
encased elastic with
drawcord
3 rows of single needle
topstitch evenly placed
created drawcord tunnel

Side dart w/ on-seam pocket
w/ 1/4" SNTS and bartacks
at top and bottom

1/4" split needle
coverstitch

no gusset

pocket bag:
lining on top handside
self on palm side

no side seam

bendback hem
encased elastic + SNTS

1/4" split needle
coverstitch

DENIM TEARS CONFIDENTIAL

UPDATED: XX/XX/XXXX

SP26-P006_Sweatpant (1)-3



| | | | |
|--------------------|-----------------------|------------------------------|----------------|
| DENIM TEARS | PANTS: P006 SWEATPANT | SEASON: SP26 | DESIGNER: TINA |
| | FACTORY: FACTORY | COLLECTION: OUR LADY LIBERTY | VARIANTS: 1 |

GRAPHICS

WEARER'S FRONT LEFT LEG PANEL:
DTG PRINT
39" WIDE, 48" TALL

ARTWORK NOT AT 100% SCALE

DENIM TEARS CONFIDENTIAL

UPDATED: XX/XX/XXXX

SP26-P006_Sweatpant (1)-5



| | | | |
|--------------------|-----------------------|------------------------------|----------------|
| DENIM TEARS | PANTS: P006 SWEATPANT | SEASON: SP26 | DESIGNER: TINA |
| | FACTORY: FACTORY | COLLECTION: OUR LADY LIBERTY | VARIANTS: 1 |

GRAPHICS

WEARER'S FRONT RIGHT LEG PANEL:
DTG PRINT
40" WIDE, 48" TALL

ARTWORK NOT AT 100% SCALE

DENIM TEARS CONFIDENTIAL

UPDATED: XX/XX/XXXX

SP26-P006_Sweatpant (1)-6

Sample Size: M

| POINT OF MEASURE | CODE | TOLERANCE | XS | S | M | L | XL | XXL |
|--|--------|-----------|------|------|-----------|------|------|------|
| Waist @ WB Edge (Relaxed) | zvFIdU | 3/8 in | 0 in | 0 in | 15 1/4 in | 0 in | 0 in | 0 in |
| Waist @ Edge (Extended) | 90UTTm | 3/8 in | 0 in | 0 in | 22 in | 0 in | 0 in | 0 in |
| WB Height | UBN6PW | 1/8 in | 0 in | 0 in | 1 7/8 in | 0 in | 0 in | 0 in |
| Low Hip @ 8" Below WB Top Edge | git1Gu | 3/8 in | 0 in | 0 in | 23 1/4 in | 0 in | 0 in | 0 in |
| Thigh @ 1" Below Crotch | X3rywO | 1/4 in | 0 in | 0 in | 14 3/4 in | 0 in | 0 in | 0 in |
| Knee @ Half of Inseam | LC56eg | 1/4 in | 0 in | 0 in | 11 1/4 in | 0 in | 0 in | 0 in |
| Leg Opening (Relaxed) | fQu0Dk | 1/4 in | 0 in | 0 in | 6 1/2 in | 0 in | 0 in | 0 in |
| Leg Opening (Extended) | RCK0g | 1/4 in | 0 in | 0 in | 8 1/4 in | 0 in | 0 in | 0 in |
| Turnback Height @ Leg Opening | AHYaQ2 | 1/8 in | 0 in | 0 in | 1 in | 0 in | 0 in | 0 in |
| Front Rise from WB Edge | 0lk1vw | 1/4 in | 0 in | 0 in | 13 1/2 in | 0 in | 0 in | 0 in |
| Back Rise from WB Edge | Uu3xDT | 1/4 in | 0 in | 0 in | 18 in | 0 in | 0 in | 0 in |
| Inseam Length | RVmCjg | 1/4 in | 0 in | 0 in | 30 in | 0 in | 0 in | 0 in |
| Outseam Length from WB Edge | YUbVae | 1/4 in | 0 in | 0 in | 41 3/4 in | 0 in | 0 in | 0 in |
| Side Dart Pocket Placement Forward from Fold | iSMowj | 1/8 in | 0 in | 0 in | 1/2 in | 0 in | 0 in | 0 in |
| Pocket Below WB Edge | pZyscG | 1/8 in | 0 in | 0 in | 3 in | 0 in | 0 in | 0 in |
| Pocket Opening Length | ozon2y | 1/8 in | 0 in | 0 in | 7 in | 0 in | 0 in | 0 in |
| Pocket Bag Width @ Bottom of Pocket Opening (Seam to Edge) | p36ZFb | 1/4 in | 0 in | 0 in | 8 1/4 in | 0 in | 0 in | 0 in |
| Pocket Bag Height from Bottom of WB to Edge | 4wOAyH | 1/4 in | 0 in | 0 in | 11 3/4 in | 0 in | 0 in | 0 in |
| Drawcord Drop at WB (Exposed Length) | xmREXa | 1/4 in | 0 in | 0 in | 9 in | 0 in | 0 in | 0 in |
| Distance Between Buttonholes/Eyelets at WB (Extended) | EWHyux | 1/4 in | 0 in | 0 in | 2 in | 0 in | 0 in | 0 in |



Measured Size: M

| POINT OF MEASURE | CODE | TOLERANCE | EXPECTED | 2ND PROTO - RCVD | VARIANCE | ADJUST BY +/- | REVISED SPEC | MEASUREMENT NOTES | MEASUREMENT STATUS |
|--|--------|-----------|-----------|------------------|----------|---------------|--------------|-------------------|--------------------|
| Waist @ WB Edge (Relaxed) | zvFIdU | 3/8 in | 15 1/4 in | 14 3/4 in | -1/2 in | 0 in | 15 1/4 in | | Back To Spec |
| Waist @ Edge (Extended) | 90UTTM | 3/8 in | 22 in | 0 in | 0 in | 0 in | 22 in | | - |
| WB Height | UBN6PW | 1/8 in | 1 7/8 in | 2 in | 1/8 in | 0 in | 1 7/8 in | | Back To Spec |
| Low Hip @ 8" Below WB Top Edge | git1Gu | 3/8 in | 23 1/4 in | 23 3/4 in | 1/2 in | 0 in | 23 1/4 in | | Back To Spec |
| Thigh @ 1" Below Crotch | X3rywO | 1/4 in | 14 3/4 in | 15 in | 1/4 in | 0 in | 14 3/4 in | | Back To Spec |
| Knee @ Half of Inseam | LC56eg | 1/4 in | 11 1/4 in | 11 1/8 in | -1/8 in | 0 in | 11 1/4 in | | - |
| Leg Opening (Relaxed) | fQu0Dk | 1/4 in | 6 1/2 in | 6 1/4 in | -1/4 in | 0 in | 6 1/2 in | | Back To Spec |
| Leg Opening (Extended) | RCK0g | 1/4 in | 8 1/4 in | 8 1/4 in | 0 in | 0 in | 8 1/4 in | | - |
| Turnback Height @ Leg Opening | AHYaQ2 | 1/8 in | 1 in | 1 in | 0 in | 0 in | 1 in | | - |
| Front Rise from WB Edge | 0lk1vw | 1/4 in | 13 1/2 in | 13 1/2 in | 0 in | 0 in | 13 1/2 in | | - |
| Back Rise from WB Edge | Uu3xDt | 1/4 in | 18 in | 17 3/4 in | -1/4 in | 0 in | 18 in | | Within Tolerance |
| Inseam Length | RVmCjg | 1/4 in | 30 in | 29 1/2 in | -1/2 in | 0 in | 30 in | R 29 | Back To Spec |
| Outseam Length from WB Edge | YUbVae | 1/4 in | 41 3/4 in | 41 1/2 in | -1/4 in | 0 in | 41 3/4 in | r 40 3/4" | Back To Spec |
| Side Dart Pocket Placement Forward from Fold | iSMowj | 1/8 in | 1/2 in | 1/2 in | 0 in | 0 in | 1/2 in | | - |
| Pocket Below WB Edge | pZyscG | 1/8 in | 3 in | 3 in | 0 in | 0 in | 3 in | | - |
| Pocket Opening Length | ozon2y | 1/8 in | 7 in | 6 3/4 in | -1/4 in | 0 in | 7 in | | Back To Spec |
| Pocket Bag Width @ Bottom of Pocket Opening (Seam to Edge) | p36ZFb | 1/4 in | 8 1/4 in | 8 1/4 in | 0 in | 0 in | 8 1/4 in | | - |
| Pocket Bag Height from Bottom of WB to Edge | 4wOAyH | 1/4 in | 11 3/4 in | 11 1/4 in | -1/2 in | 1/4 in | 12 in | Increase +3/4" | See New Value |
| Drawcord Drop at WB (Exposed Length) | xmREXa | 1/4 in | 9 in | 9 in | 0 in | 0 in | 9 in | | - |
| Distance Between Buttonholes/Eyelets at WB (Extended) | EWHyux | 1/4 in | 2 in | 2 in | 0 in | 0 in | 2 in | | - |



9/5 design notes - Genny Mayden

CREATED ON SEP 8, 2025 5:10 PM

- make print scale smaller by 50%



Fitting 9.5.25 - Freelance Account

CREATED ON SEP 12, 2025 8:50 PM

FIT/PATTERN

****Follow the provided reference block pattern **SWEATPANTS WITH CUFF** for fit**

****Pattern has 0% shrinkage**

CONSTRUCTION/WORKMANSHIP

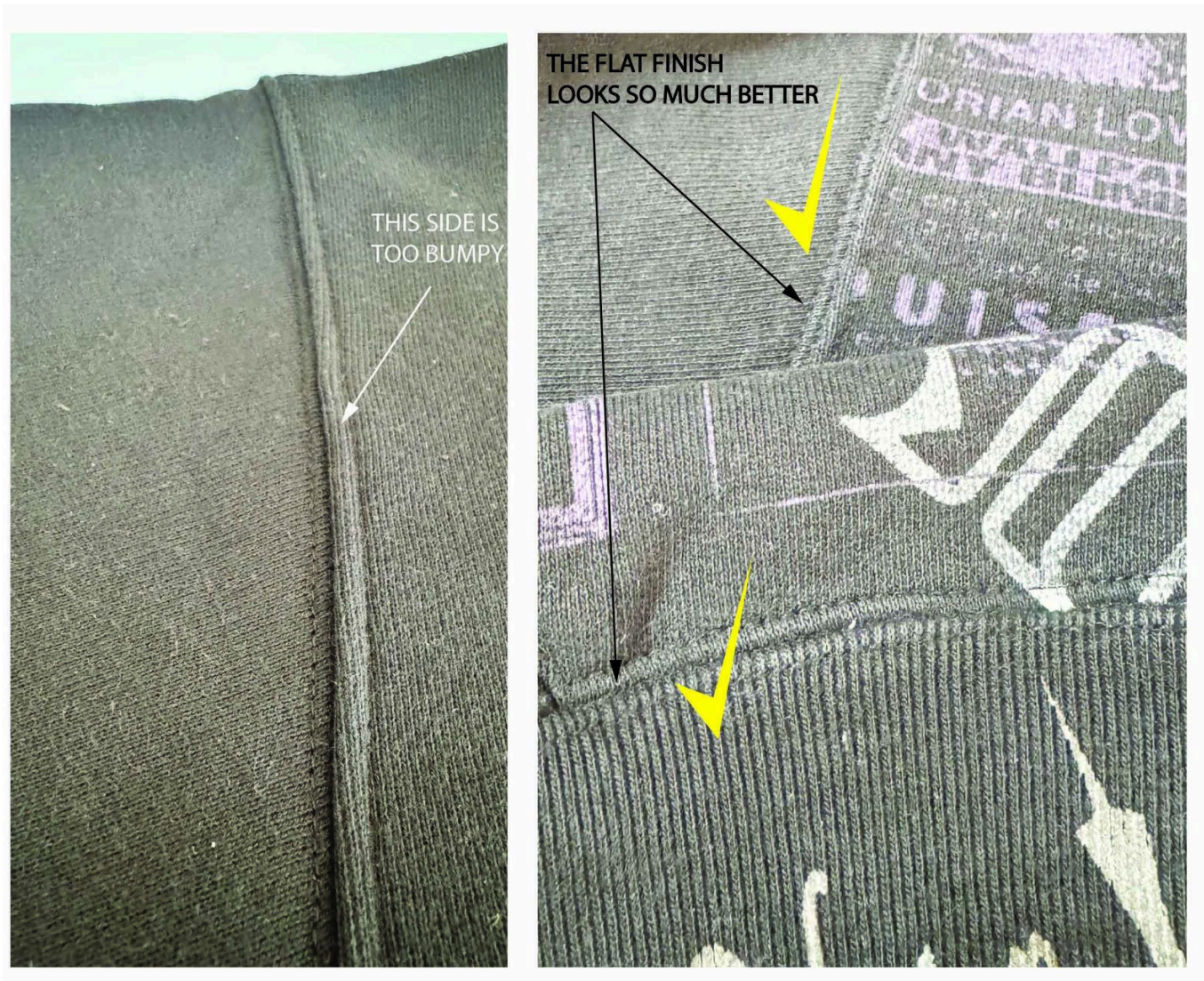
****Remove Front Fly**

****Move drawcord/eyelets inside of the waistband**

****Finish the following seams with 1/4" split needle top stitch (bottom coverstitch):**

- Front and back rises
- Please keep each side of the seam flat without bumps - see image below for the finish reference

Thanks,



Split Needle Finish.jpg



Fitting 10.23.25 - Freelance Account

CREATED ON OCT 23, 2025 6:54 PM

****PPS MUST BE ON SPEC**

FIT/PATTERN

- 1) Increase Waist Width Relaxed +1/2" to meet target spec at 15 1/4"
- 2) WB height should be reduced -1/8" to 1 7/8"
- 3) Low Hip is measuring +1/2 wider> please reduce to meet target at 23 1/4"
- 4) Leg Width:
 - reduce Thigh -1/4" to hit target at 14 3/4"
 - add 1/4" to Leg Opening Relaxed to finish at 6 1/2"
- 5) Leg lengths are uneven and one is shorter than the other one - see spec page
 - keep both inseams/outseams even and on spec
- 6) Side Pocket:
 - revise to dart construction with on-seam pocket finished with 1/4" SNTS + bartacks at top and bottom - see **photo A**
 - pocket opening should be at 7"
 - increase pocket bag height +3/4" to finish at 12"

FIT/PATTERN :

- Tăng rộng eo đo êm thêm +1/2" để đạt thông số 15 1/4".

- Giảm to bản eo xuống -1/8", còn 1 7/8".

- Chiều rộng ống quần

- Rộng quần :

+ Giảm vòng đùi -1/4" để đạt được 14 3/4"

+ Tăng rộng lai đo êm thêm +1/4", hoàn thiện ở 6 1/2"

- Chiều dài hai ống quần không đều, một bên dài hơn → vui lòng kiểm tra lại trên trang spec, giữ cả đường trong (inseam) và đường ngoài (outseam) đồng đều, đúng theo thông số.

- Túi sườn :

+ Chuyển sang cấu trúc may dạng dart, túi nằm trên đường may, hoàn thiện bằng đường may điều 1 kim 1/4" + đóng bọ ở đầu và cuối – xem photo A.

+ Mệng túi nên 7"

+ Tăng cao lót túi thêm +3/4", hoàn thiện ở 12".

CONSTRUCTION :

-Đã cập nhật cấu trúc túi bên.

- Các phần còn lại đạt yêu cầu như 2nd proto.

TRIM:

- Sử dụng drawcord màu Cream cùng màu với nền hoa

Thanks,
Misha



SS26BAS1452 All Over Floral Wreath Sweatpant - 2nd proto



SS26BAS1452 All Over Floral Wreath Sweatpant - 2nd proto-01.jpg



SS26BAS1452 All Over Floral Wreath Sweatpant - 2nd proto



REVISE TO SIDE DART + ON-SEAM POCKET
W/ 1/4" SNTS AND HORIZONTAL BARTACKS
AT TOP AND BOTTOM OF THE POCKET OPENING



SS26BAS1452 All Over Floral Wreath Sweatpant - 2nd proto-02.jpg



10/23 design notes - Genny Mayden

CREATED ON OCT 27, 2025 8:36 PM

- please use cream drawcords (match to cream in artwork)