

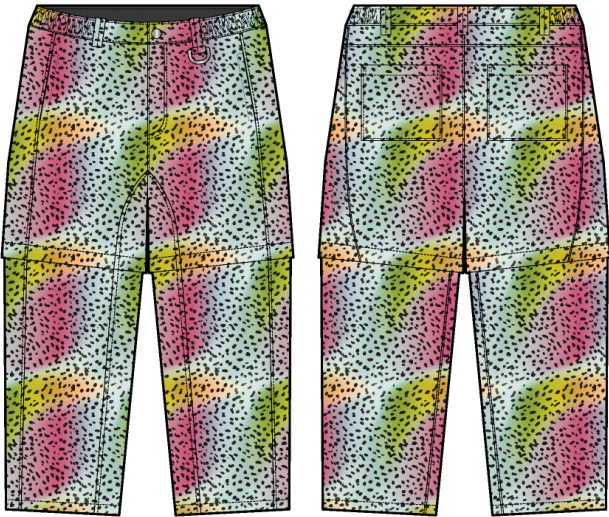


Stussy Tears Cargo Pant - Style #SS26BWC1588

Spring/Summer, 2026

Summary  
10-06-2025

DENIM TEARS	BOTTOMS: STUSSY CARGO PANTS	COLLECTION: STUSSY TEARS	DESIGNER: DESIGNER
	STYLE #: SS26BWC1588	SEASON: SS26	VARIANTS: 1
SKETCH			



NameStussy Tears Cargo Pant

Style No.SS26BWC1588

SeasonSpring/Summer

Year2026

Size ScaleM -Sample size

XS S M L XL XXL

Created by/Author10/6/2025

Genny Mayden  
genny@denimtears.com

DENIM TEARS CONFIDENTIAL

UPDATED: OCTOBER 6 2025

Stussy Tears Cargo Pant



Style Color Code	Not Set
Carryover/New	Not Set



DENIM TEARS	BOTTOMS: STUSSY CARGO PANTS	COLLECTION: STUSSY TEARS	DESIGNER: DESIGNER
	STYLE #: SS26BWC1588	SEASON: SS26	VARIANTS: 1
SKETCH			



DENIM TEARS CONFIDENTIAL

UPDATED: OCTOBER 6 2025

STUSSY TEARS CARGO PANTS-SS26BWC1588-1



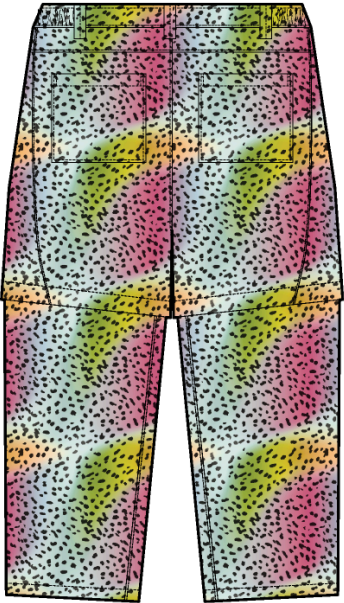
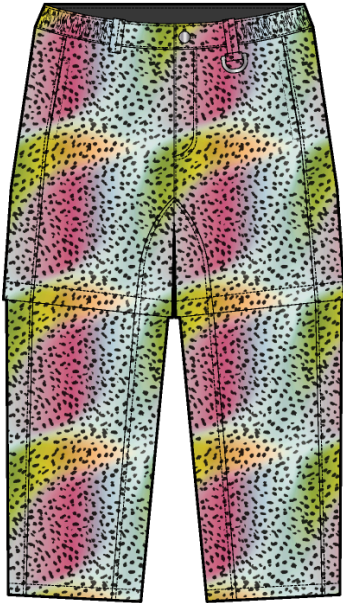
DENIM TEARS	BOTTOMS: STUSSY CARGO PANTS	COLLECTION: STUSSY TEARS	DESIGNER: DESIGNER
	STYLE #: SS26BWC1588	SEASON: SS26	VARIANTS: 1
COLOR & QUALITY STANDARDS			

ITEM	LOCATION	COLORWAY 1
SEQUIN	SELF A BODY	RAINBOW TROUT AOP
POLY	LINING	JET BLACK 19-0303 TCX
DRAWCORDS	@ INTERIOR WB VERTICAL THREAD EYELETS	JET BLACK 19-0303 TCX
SNAP	FRONT FLY CLOSURE	NICKEL
D-RING	@ WR FRONT LEFT BELT LOOP	NICKEL
ZIPPER PULL	@ FRONT-RISE ZIP + HIDDEN KNEE ZIP	NICKEL
ZIPPER TAPE	@ FRONT-RISE ZIP + HIDDEN KNEE ZIP	JET BLACK 19-0303 TCX
THREAD	SELF A THREAD	DTM
ARTWORK	PRINTED SEQUIN ALL OVER PRINT ON SELF BODY	SEE ARTWORK





DENIM TEARS	BOTTOMS: STUSSY CARGO PANTS	COLLECTION: STUSSY TEARS	DESIGNER: DESIGNER
	STYLE #: SS26BWC1588	SEASON: SS26	VARIANTS: 1
SKETCH			



**SELF A:** RAINBOW TROUT AOP (SEQUIN)  
**LINING:** BLACK  
**DRAWCORDS:** BLACK  
**SNAP:** NICKEL  
**D-RING:** NICKEL  
**ZIPPER:** YKK METAL  
**ZIPPER TAPE:** BLACK  
**STITCH:** TONAL

DENIM TEARS CONFIDENTIAL	UPDATED: OCTOBER 6 2025
--------------------------	-------------------------

STUSSY TEARS CARGO PANTS-SS26BWC1588-2  
1. No Color Assigned



DENIM TEARS

BOTTOMS: STUSSY CARGO PANTS

STYLE #: SS26BWC1588

COLLECTION: STUSSY TEARS

SEASON: SS26

DESIGNER: DESIGNER

VARIANTS: 1

CONSTRUCTION

= SELF A

= LINING

\*GARMENT TO BE FULLY LINED

2 PIECE WB W/ COMBO FACING

5X BELT LOOP W/ BARTACK @ TOP + BOTTOM

1/4" SN TS @ TOP + BOTTOM

SN TS J-STITCH HIDDEN FLY ZIPPER

HIDDEN CONVERTIBLE ZIP-OFF AROUND KNEE

FULLU REMOVEABLE LEG

DOUBLE TURNBACK @ POCKET OPENING

W/ SN TS + BOX STITCH @ TOP CORNERS + OPENING

PATCH POCKETS

W/ SN EDGE STITCH

DRAWSTRINGS @ INTERIOR W/ VERTICAL THREAD EYELETS

D-RING @ WEARER'S FRONT LEFT BELT LOOP

ON-SEAM POCKET W/ 1/4" SN TS

1/8" SN TS

1/4" SN TS

1/4" SN TS

1/4" SN TS @ BACK YOKE

1/4" SN TS

DN TS @ SHORTS HEM

1/4" SN TS

DN TS @ PANTS HEM

DENIM TEARS CONFIDENTIAL

UPDATED: OCTOBER 6 2025

STUSSY TEARS CARGO PANTS-SS26BWC1588-3

Created with backbone

© Denim Tears

Page 6 of 13



**Sample Size: M**

POINT OF MEASURE	CODE	TOLERANCE	XS	S	M	L	XL	XXL
Waist Width (Relaxed)	FEzg9k	3/8 in	0 in	0 in	17 in	0 in	0 in	0 in
Waist Width (Extended)	dvTaFs	3/8 in	0 in	0 in	19 1/2 in	0 in	0 in	0 in
WB Height	bz6G2E	1/8 in	0 in	0 in	1 1/2 in	0 in	0 in	0 in
Low Hip @ 7" Below WB Seam (3-Point Measurement)	j13vRW	3/8 in	0 in	0 in	23 in	0 in	0 in	0 in
Front Rise Length from WB Seam (Excl Inseam Panel)	btsn9n	1/4 in	0 in	0 in	10 3/4 in	0 in	0 in	0 in
Back Rise Length from WB Seam (Excl Inseam Panel)	e3qx1R	1/4 in	0 in	0 in	14 1/2 in	0 in	0 in	0 in
Inseam Panel Width	rcUQl6	1/8 in	0 in	0 in	2 3/4 in	0 in	0 in	0 in
Thigh @1" below Front Crotch (Incl Inseam Panel)	QpufWo	3/8 in	0 in	0 in	14 1/2 in	0 in	0 in	0 in
Shorts: Leg Opening Width	qXjvSP	1/4 in	0 in	0 in	12 1/4 in	0 in	0 in	0 in
Shorts: Turnback Height @ Hem	muGE2	1/8 in	0 in	0 in	1 1/4 in	0 in	0 in	0 in
Shorts: Inseam from Crotch Point	xPmhqh	1/8 in	0 in	0 in	9 1/2 in	0 in	0 in	0 in
Shorts: Outseam from WB Seam @ Natural Fold	ew86Zn	1/4 in	0 in	0 in	20 1/4 in	0 in	0 in	0 in
Pants: Knee @ Top Zipper Opening	viUWMw	1/4 in	0 in	0 in	12 in	0 in	0 in	0 in
Pants: Leg Opening Width @ Edge	pTjvql	1/8 in	0 in	0 in	9 3/4 in	0 in	0 in	0 in
Pants: Turnback Height @ Hem	R7tMjf	1/8 in	0 in	0 in	1 in	0 in	0 in	0 in
Pants: Inseam from Crotch Point	0EH7wx	1/4 in	0 in	0 in	29 in	0 in	0 in	0 in
J-Stitch Length from WB Seam	WPIlCj	1/8 in	0 in	0 in	7 in	0 in	0 in	0 in
J-Stitch Width	mhRPtl	1/8 in	0 in	0 in	1 1/2 in	0 in	0 in	0 in
CF Fly Zipper Length	9NRVGq	1/4 in	0 in	0 in	6 1/2 in	0 in	0 in	0 in
On-Seam Side Pocket below WB	9WekF5	1/8 in	0 in	0 in	1 in	0 in	0 in	0 in
On-Seam SS Pocket Opening Length	KFcspP	1/8 in	0 in	0 in	6 3/4 in	0 in	0 in	0 in
Pocket Bag Height at Center (WB Seam to Edge)	SS01kh	1/4 in	0 in	0 in	13 1/4 in	0 in	0 in	0 in
Back Yoke Height @ CB	tUTPxg	1/8 in	0 in	0 in	1 3/4 in	0 in	0 in	0 in
Back Yoke Height @ SS	sL3eB	1/8 in	0 in	0 in	2 in	0 in	0 in	0 in
Back Pocket from Yoke Seam near CB	sFKnpG	1/8 in	0 in	0 in	7/8 in	0 in	0 in	0 in
Back Pocket from Yoke Seam near CB	csZgN	1/8 in	0 in	0 in	7/8 in	0 in	0 in	0 in
Back Pocket from CB to Top Inner Corner	brsjQ9	1/8 in	0 in	0 in	2 in	0 in	0 in	0 in
Pocket Height	vzV1Q9	1/8 in	0 in	0 in	6 1/2 in	0 in	0 in	0 in
Pocket Width	HK8w3g	1/8 in	0 in	0 in	5 3/4 in	0 in	0 in	0 in
Turnback Height @ Pocket Opening	eS2drX	1/8 in	0 in	0 in	7/8 in	0 in	0 in	0 in
Loop Length	LTr5Sx	1/8 in	0 in	0 in	2 1/4 in	0 in	0 in	0 in
Loop Width	PaYsXx	1/8 in	0 in	0 in	2 5/8 in	0 in	0 in	0 in
Loop w/ D-Ring Length	LZX9U	1/8 in	0 in	0 in	3/4 in	0 in	0 in	0 in
Number of Loops	EEHrUS	0 in	0 in	0 in	5 in	0 in	0 in	0 in
Side Panel Width @ WB Seam	fhnS7a	1/8 in	0 in	0 in	0 in	0 in	0 in	0 in
Side Panel Width @ Shorts Hem	TczRrN	1/8 in	0 in	0 in	6 1/2 in	0 in	0 in	0 in
Drawcord Exposed (Each Side)	p6aw2U	1/2 in	0 in	0 in	7 in	0 in	0 in	0 in



**Measured Size: M**

POINT OF MEASURE	CODE	TOLERANCE	EXPECTED	1ST PROTO - RCVD	VARIANCE	ADJUST BY +/-	REVISED SPEC	MEASUREMENT NOTES	MEASUREMENT STATUS
Waist Width (Relaxed)	FEzg9k	3/8 in	0 in	17 3/4 in	17 3/4 in	17 in	17 in	Reduce -3/4"	See New Value
Waist Width (Extended)	dvTaFs	3/8 in	0 in	20 1/4 in	20 1/4 in	19 1/2 in	19 1/2 in	Reduce -3/4"	See New Value
WB Height	bz6G2E	1/8 in	0 in	1 1/2 in	1 1/2 in	1 1/2 in	1 1/2 in		-
Low Hip @ 7" Below WB Seam (3-Point Measurement)	j13vRW	3/8 in	0 in	23 in	23 in	23 in	23 in		-
Front Rise Length from WB Seam (Excl Inseam Panel)	btsn9n	1/4 in	0 in	9 3/4 in	9 3/4 in	10 3/4 in	10 3/4 in	Drop Crotch +1"	See New Value
Back Rise Length from WB Seam (Excl Inseam Panel)	e3qx1R	1/4 in	0 in	13 1/2 in	13 1/2 in	14 1/2 in	14 1/2 in	Drop Crotch +1"	See New Value
Inseam Panel Width	rcUQl6	1/8 in	0 in	2 3/4 in	2 3/4 in	2 3/4 in	2 3/4 in		-
Thigh @ 1" below Front Crotch (Incl Inseam Panel)	QpufWo	3/8 in	0 in	14 1/2 in	14 1/2 in	14 1/2 in	14 1/2 in		-
Shorts: Leg Opening Width	qXjvSP	1/4 in	0 in	12 1/4 in	12 1/4 in	12 1/4 in	12 1/4 in		-
Shorts: Turnback Height @ Hem	muGE2	1/8 in	0 in	1 1/4 in	1 1/4 in	1 1/4 in	1 1/4 in		-
Shorts: Inseam from Crotch Point	xPmhqh	1/8 in	0 in	9 in	9 in	9 1/2 in	9 1/2 in	RVSD	See New Value
Shorts: Outseam from WB Seam @ Natural Fold	ew86Zn	1/4 in	0 in	18 3/4 in	18 3/4 in	20 1/4 in	20 1/4 in	Increase +1 1/2"	See New Value
Pants: Knee @ Top Zipper Opening	vIUWMw	1/4 in	0 in	12 in	12 in	12 in	12 in		-
Pants: Leg Opening Width @ Edge	pTjvql	1/8 in	0 in	9 3/4 in	9 3/4 in	9 3/4 in	9 3/4 in		-
Pants: Turnback Height @ Hem	R7tMjf	1/8 in	0 in	1 in	1 in	1 in	1 in		-
Pants: Inseam from Crotch Point	0EH7wx	1/4 in	0 in	30 in	30 in	29 in	29 in	RVSD due to lower Crotch	See New Value
J-Stitch Length from WB Seam	WPllCj	1/8 in	0 in	7 in	7 in	7 in	7 in		-
J-Stitch Width	mhRPtl	1/8 in	0 in	1 1/2 in	1 1/2 in	1 1/2 in	1 1/2 in		-
CF Fly Zipper Length	9NRVGq	1/4 in	0 in	6 1/2 in	6 1/2 in	6 1/2 in	6 1/2 in		-
On-Seam Side Pocket below WB	9WekF5	1/8 in	0 in	0 in	0 in	1 in	1 in	Drop +1"	See New Value
On-Seam SS Pocket Opening Length	KFc spp	1/8 in	0 in	6 3/4 in	6 3/4 in	6 3/4 in	6 3/4 in		-
Pocket Bag Height at Center (WB Seam to Edge)	SS01kh	1/4 in	0 in	12 1/4 in	12 1/4 in	13 1/4 in	13 1/4 in	Increase +1"	See New Value
Back Yoke Height @ CB	tUTPxg	1/8 in	0 in	1 3/4 in	1 3/4 in	1 3/4 in	1 3/4 in		-
Back Yoke Height @ SS	sL3eB	1/8 in	0 in	2 1/2 in	2 1/2 in	2 in	2 in	Reduce -1/2"	See New Value
Back Pocket from Yoke Seam near CB	sFKnpG	1/8 in	0 in	3/4 in	3/4 in	7/8 in	7/8 in	RVSD	See New Value
Back Pocket from Yoke Seam near CB	csZgN	1/8 in	0 in	3/4 in	3/4 in	7/8 in	7/8 in	RVSD	See New Value
Back Pocket from CB to Top Inner Corner	brsjQ9	1/8 in	0 in	2 1/4 in	2 1/4 in	2 in	2 in	RVSD	See New Value
Pocket Height	vzV1Q9	1/8 in	0 in	6 in	6 in	6 1/2 in	6 1/2 in	Increase +1/2"	See New Value
Pocket Width	HK8w3g	1/8 in	0 in	5 1/4 in	5 1/4 in	5 3/4 in	5 3/4 in	Increase +1/2"	See New Value
Turnback Height @ Pocket Opening	eS2drX	1/8 in	0 in	7/8 in	7/8 in	7/8 in	7/8 in		-
Loop Length	LTr5Sx	1/8 in	0 in	2 1/4 in	2 1/4 in	2 1/4 in	2 1/4 in		-
Loop Width	PaYsXx	1/8 in	0 in	2 5/8 in	2 5/8 in	2 5/8 in	2 5/8 in		-
Loop w/ D-Ring Length	LZX9U	1/8 in	0 in	3/4 in	3/4 in	3/4 in	3/4 in		-
Number of Loops	EEHrUS	0 in	0 in	5 in	5 in	5 in	5 in		-
Side Panel Width @ WB Seam	fhnS7a	1/8 in	0 in	3 3/4 in	3 3/4 in	0 in	0 in	FTY Advised	See New Value
Side Panel Width @ Shorts Hem	TczRrN	1/8 in	0 in	6 1/2 in	6 1/2 in	6 1/2 in	6 1/2 in		-
Drawcord Exposed (Each Side)	p6aw2U	1/2 in	0 in	0 in	0 in	7 in	7 in		-



## Fitting 10.1.25 - Freelance Account

CREATED ON OCT 2, 2025 8:12 PM

### FIT/PATTERN

- 1) Waist needs to be tighter> please reduce Waist Width -3/4"
  - take out this amount evenly from the Front/Back and Side Panels
- 2) The overall leg width on shorts/pants is good as per proto
- 3) Drop Crotch +1"> front and back rises have been updated accordingly +1" - see **photo A** for fit updates
  - the pants inseam spec was reduced accordingly to finish at 29"
- 4) Increase shorts leg length +1 1/2":
  - inseam will be increased only +1/2" due to lowering the crotch
  - outseam was updated +1 1/2"
  - shorten the lower leg inseam length so the total inseam for the Pant remains at 29"
- 5) On-Seam Pocket:
  - drop opening to 1" below WB Seam
  - increase pocket bag height +1" accordingly
- 6) Back Yoke:
  - keep height @ CB as per proto
  - raise yoke placement at Side Seam by 1/2" to finish at 2"
- 7) Back Pockets:
  - revise placement to be parallel to the new yoke seam at 7/8"
  - shift pocket placement closer to CB to be at 2" from CB Seam
  - increase pocket height +1/2"
  - increase pocket width +1/2"
- 8) Drawcords @ Interior:
  - should be 9" exposed on each side
  - tie knots at the ends (as close to the ends as possible)

### CONSTRUCTION/WORKMANSHIP

- 1) We would like to line the entire pant (top part + detachable leg separately)
  - follow design comments for the lining quality
- 2) Since the garment is now lined, please remove the zip guard at shorts' hem - see **photo B**

Thanks,

1) Vòng eo cần ôm hơn → vui lòng giảm chiều rộng vòng eo 3/4"

Giảm đều phần này ở Thân trước/Thân sau và Thân sườn.

2) Độ rộng ống quần (shorts/pants) → giữ nguyên như mẫu proto.

3) Hạ đáy +1" → đường đáy trước và sau đã được cộng thêm +1" (xem ảnh A để cập nhật fitting).

Thông số đường trong quần (inseam) đã được giảm tương ứng để hoàn thiện ở 29".

4) Tăng chiều dài ống shorts +1 1/2":

Đường trong (inseam) chỉ tăng +1/2" do đã hạ đáy.

Đường ngoài (outseam) được cập nhật +1 1/2".

Rút ngắn chiều dài inseam phần ống dưới để tổng inseam quần dài vẫn giữ ở 29".

5) Túi xẻ sườn (On-Seam Pocket):

Hạ miệng túi xuống cách đường may cạp (WB Seam) 1".

Tăng chiều cao túi thêm +1".

6) Yoke sau (Back Yoke):

Giữ nguyên chiều cao tại CB như proto.

Nâng vị trí yoke tại sườn lên thêm 1/2" để hoàn thiện ở 2".

7) Túi sau (Back Pockets):

Điều chỉnh vị trí song song với đường yoke mới tại 7/8".

Dịch túi lại gần CB, cách đường may CB 2".

Tăng chiều cao túi +1/2".

Tăng chiều rộng túi +1/2".

8) Dây luồn (Drawcords @ Interior):

Mỗi bên để lộ 9".

Thắt nút ở hai đầu (càng gần đầu càng tốt).

KẾT CẤU / TAY NGHỀ (CONSTRUCTION/WORKMANSHIP):

Quần sẽ được lót toàn bộ (phần trên + phần ống tháo rời riêng).

Làm theo comment thiết kế về chất lượng lớp lót.

Vì quần đã có lót, vui lòng Bỏ nẹp che khóa ở gấu quần shorts. (xem ảnh B).





**SS26BWC1588 Stussy Tears Cargo Pant - 1st Proto**



**SS26BWC1588 Stussy Tears Cargo Pant - 1st Proto-01.jpg**



**SS26BWC1588 Stussy Tears Cargo Pant - 1st Proto**



**SS26BWC1588 Stussy Tears Cargo Pant - 1st Proto-02.jpg**





HẠ ĐÁY +1  
TĂNG DÀI QUẦN SHORT 1/2"

**SS26BWC1588 Stussy Tears Cargo Pant - 1st Proto**

**\*\*DROP CROTCH**

**\*\*INCREASE SHORTS' LEG LENGTH**



THAY ĐỔI ĐỘ SAU  
TĂNG KÍCH THƯỚC TÚI VÀ ĐIỀU CHỈNH VỊ  
TRÍ >> XEM BTS MỚI

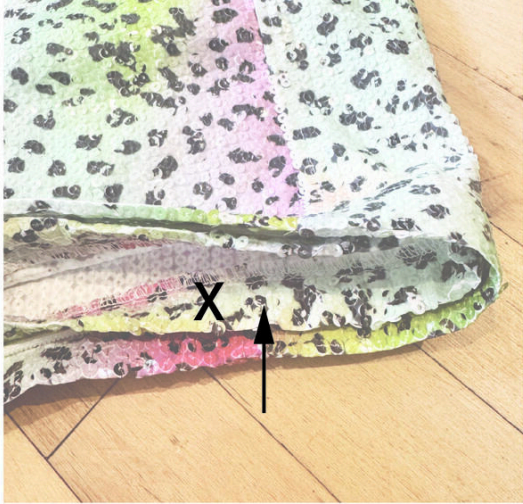
**\*\*REVISE BACK YOKE**

**\*\*INCREASE POCKET SCALE AND UPDATE PLACEMENT>  
FOLLOW NEW TARGET SPECS**



Vì quần đã có lót, vui lòng Bỏ nẹp  
che khóa ở gấu quần shorts.

**\*\*REMOVE ZIP GUARD FROM THE LEG OPENING  
ON SHORTS> GARMENT IS FULLY LINED NOW**



SS26BWC1588 Stussy Tears Cargo Pant - 1st Proto-03.jpg





## 10/1 design notes - Genny Mayden

CREATED ON OCT 6, 2025 4:59 PM

- YKK nickel zipper, match to zipper finish, snap
- Black zipper tape
- Add black mesh lining
- Make knee zipper facing in mesh to make easier to unzip

Khóa kéo YKK mạ niken, đồng bộ với hoàn thiện của khóa kéo, nút bấm.

Băng khóa kéo màu đen.

Thêm lớp lót lưới màu đen.

Làm nếp khóa gối bằng vải mesh để dễ dàng kéo mở.