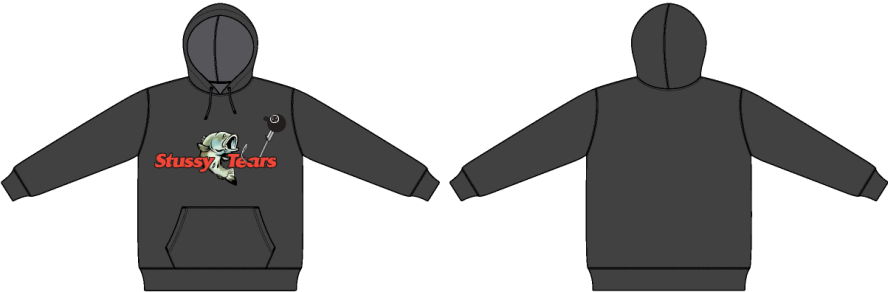




**Stussy Tears Pullover Hoodie - Style #SS26THD1585**  
Spring/Summer, 2026

**Summary**  
09-10-2025

DENIM TEARS	TOPS: FLEECE HOODIE	SEASON: FW26	DESIGNER: YOSUE
	FACTORY: FACTORY	COLLECTION: STUSSY TEARS	VARIANTS: 1
COLORWAYS			



BLACK

SELF A: BLACK  
RIBBING: BLACK  
EYELETS: DTM  
STITCH: DTM SELF A  
FIT: STUSSY REF  
FABRIC QUALITY: FIT: STUSSY REF

Name Stussy Tears Pullover Hoodie  
Style No. SS26THD1585  
Season Spring/Summer  
Year 2026  
Size Scale **M** -Sample size

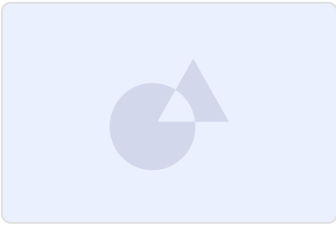
**XS** **S** **M** **L** **XL** **XXL**

Created by/Author 9/10/2025  
Genny Mayden  
genny@denimtears.com

DENIM TEARS CONFIDENTIAL

UPDATED: JULY/2025

Stussy Tears Pullover Hoodie

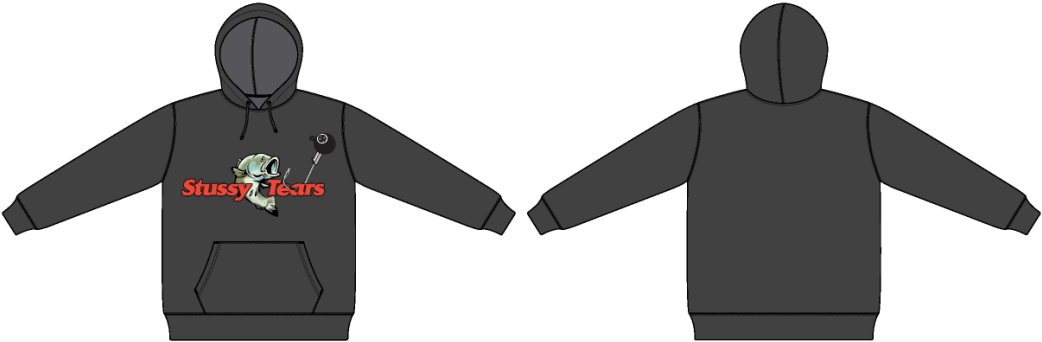


1. No Color Assigned

Style Color Code	Not Set
Carryover/New	Not Set



DENIM TEARS	TOPS: FLEECE HOODIE	SEASON: FW26	DESIGNER: YOSUE
	FACTORY: FACTORY	COLLECTION: STUSSY TEARS	VARIANTS: 1
COLORWAYS			



BLACK

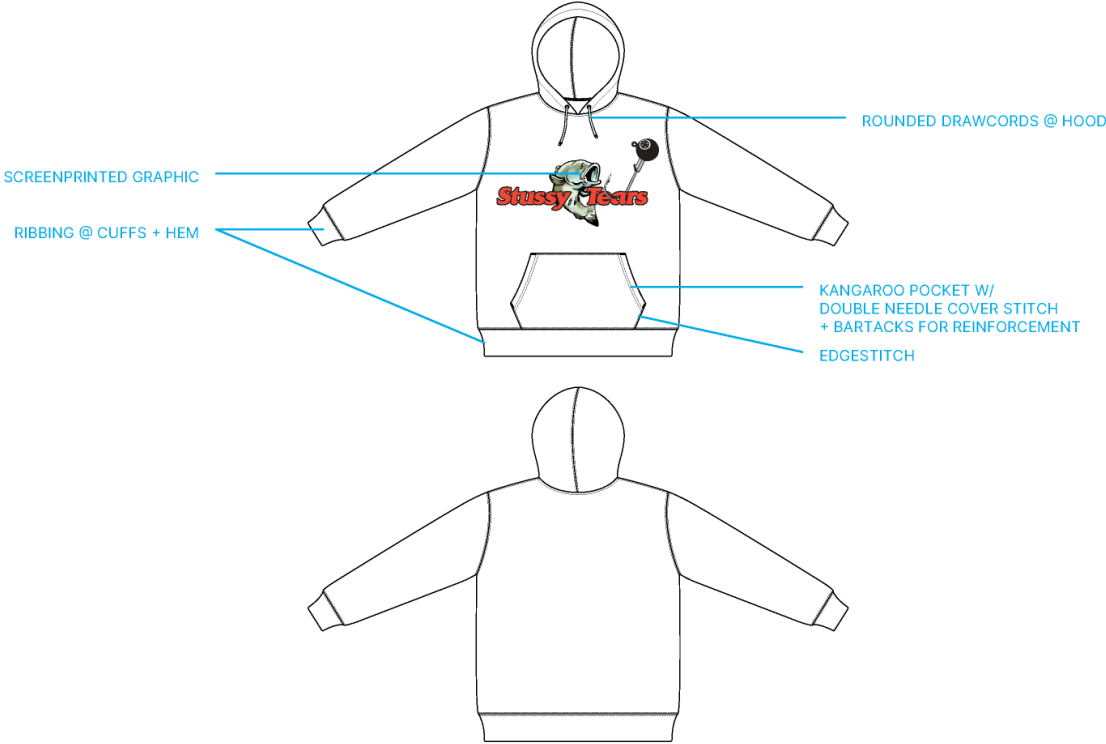
SELF A: BLACK  
RIBBING: BLACK  
EYELETS: DTM  
STITCH: DTM SELF A  
FIT: STUSSY REF  
FABRIC QUALITY: FIT: STUSSY REF

FLEECE HOODIE-STUSSY TEARS-1



DENIM TEARS	TOPS: FLEECE HOODIE	SEASON: FW26	DESIGNER: YOSUE
	FACTORY: FACTORY	COLLECTION: STUSSY TEARS	VARIANTS: 1
CONSTRUCTION			

 = SELF A



FLEECE HOODIE-STUSSY TEARS-2





DENIM TEARS	TOPS: FLEECE HOODIE	SEASON: FW26	DESIGNER: YOSUE
	FACTORY: FACTORY	COLLECTION: STUSSY TEARS	VARIANTS: 1
COLOR & QUALITY STANDARDS			


ITEM	LOCATION	COLORWAY 1
FLEECE	SELF A BODY	JET BLACK 19-0303 TCX
RIBBING	SLEEVE CUFFS + HEM	JET BLACK 19-0303 TCX
DRAWCORD	Ⓢ HOOD	JET BLACK 19-0303 TCX
THREAD	SELF A: MAIN BODY + EMBROIDERED EYELET Ⓢ HOOD	DTM
ARTWORK	SCREENPRINT ON CF	WHITE



<b>DENIM TEARS</b>	TOPS: FLEECE HOODIE	SEASON: FW26	DESIGNER: YOSUE
	FACTORY: FACTORY	COLLECTION: STUSSY TEARS	VARIANTS: 1

GRAPHICS

12" W x 6.7" H



**STUSSY TEARS FISH HOOK**  
SCREENPRINT ON CENTER FRONT OF HOODIE  
ARTWORK NOT @ 100% TO SCALE

DENIM TEARS CONFIDENTIAL

UPDATED: JULY/2025

FLEECE HOODIE-STUSSY TEARS-4



<b>DENIM TEARS</b>	TOPS: FLEECE HOODIE	SEASON: FW26	DESIGNER: YOSUE
	FACTORY: FACTORY	COLLECTION: STUSSY TEARS	VARIANTS: 1
GRAPHIC PLACEMENT			

\* PLEASE MATCH PLACEMENT AS CLOSE TO CAD \*





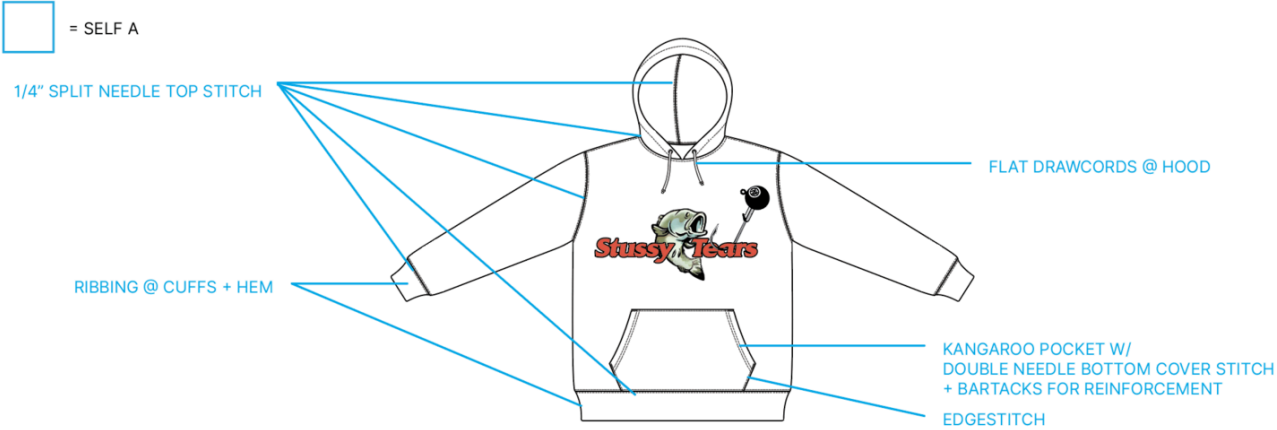
DENIM TEARS	TOPS: FLEECE HOODIE	SEASON: FW26	DESIGNER: YOSUE
	FACTORY: FACTORY	COLLECTION: STUSSY TEARS	VARIANTS: 1
DESIGN REFERENCE			

SHAPE REFERENCE + CONSTRUCTION REF:





DENIM TEARS	TOPS: FLEECE HOODIE	SEASON: FW26	DESIGNER: YOSUE
	FACTORY: FACTORY	COLLECTION: STUSSY TEARS	VARIANTS: 1
CONSTRUCTION			





**Sample Size: M**

POINT OF MEASURE	CODE	TOLERANCE	XS	S	M	L	XL	XXL
Body Length from CB Neck	L51T0o	1/4 in	0 in	0 in	25 1/4 in	0 in	0 in	0 in
Shoulder Seam Forward	xgRDFB	1/8 in	0 in	0 in	1/2 in	0 in	0 in	0 in
Shoulder Drop from HPS	wQ4qr9	1/8 in	0 in	0 in	2 1/2 in	0 in	0 in	0 in
Shoulder Width (Sm to Sm)	Rt4BS0	1/4 in	0 in	0 in	25 3/4 in	0 in	0 in	0 in
Across Front @ 6" Blw HPS	KBgWIO	1/4 in	0 in	0 in	23 1/2 in	0 in	0 in	0 in
Across Back @ 6" Blw HPS	vxCJU5	1/4 in	0 in	0 in	24 in	0 in	0 in	0 in
Chest @ 1" Blw Armhole	zuEYg1	3/8 in	0 in	0 in	26 1/2 in	0 in	0 in	0 in
Bottom Sweep @ 1" Above Cuff Seam	E40dli	3/8 in	0 in	0 in	24 3/4 in	0 in	0 in	0 in
Bottom Sweep @ Edge	tKtZ6U	3/8 in	0 in	0 in	20 1/4 in	0 in	0 in	0 in
Cuff Height @ Sweep	lqURGW	1/8 in	0 in	0 in	2 3/4 in	0 in	0 in	0 in
Sleeve Length From CB Neck to Cuff Edge (3-Point Measurement)	A4qCGQ	3/8 in	0 in	0 in	35 3/4 in	0 in	0 in	0 in
Armhole Straight (Sm to Sm)	hkBlb8	1/4 in	0 in	0 in	11 1/2 in	0 in	0 in	0 in
Bicep @ 1" Blw Armhole	ZFbGfF	1/4 in	0 in	0 in	11 in	0 in	0 in	0 in
Elbow @ Half of Inseam (Excl Cuff)	0R4AXC	1/4 in	0 in	0 in	8 3/8 in	0 in	0 in	0 in
Sleeve Opening @ 1" Above Cuff Seam	0BzjxU	1/4 in	0 in	0 in	5 7/8 in	0 in	0 in	0 in
Sleeve Opening on Edge	evuF23	1/8 in	0 in	0 in	3 1/2 in	0 in	0 in	0 in
Sleeve Cuff Height	cHRgwT	1/8 in	0 in	0 in	2 3/4 in	0 in	0 in	0 in
Neck Width @ HPS (Sm to Sm)	mKoBax	1/8 in	0 in	0 in	8 1/2 in	0 in	0 in	0 in
Front Neck Drop (HPS to CF Neck Sm)	TjF8iY	1/8 in	0 in	0 in	4 1/4 in	0 in	0 in	0 in
Back Neck Drop (HPS to CB Neck Sm)	30zyGo	1/8 in	0 in	0 in	1 in	0 in	0 in	0 in
Hood Height @ Opening (from CF Neck to Top Edge)	y7RXJh	1/8 in	0 in	0 in	15 1/2 in	0 in	0 in	0 in
Hood Height @ HPS	CilGYS	1/4 in	0 in	0 in	13 3/4 in	0 in	0 in	0 in
Hood Width @ 5" Blw Top Edge	LmTEaK	1/8 in	0 in	0 in	10 1/2 in	0 in	0 in	0 in
Hood Length @ CB Seam	qFhICD	1/4 in	0 in	0 in	0 in	0 in	0 in	0 in
Hood Tunnel Height @ Opening	Rlm51r	1/8 in	0 in	0 in	0 in	0 in	0 in	0 in
Eyelet Placement (CF Neck Seam to Bottom of Eyelet)	JW2tiN	1/8 in	0 in	0 in	1 in	0 in	0 in	0 in
Drawcord Drop (Exposed Length)	xmREXa	1/4 in	0 in	0 in	7 in	0 in	0 in	0 in
Kangaroo Pocket Height @ CF	Ci9Rz1	1/8 in	0 in	0 in	8 1/2 in	0 in	0 in	0 in
Kangaroo Pocket Height @ Sides	f8PY9O	1/8 in	0 in	0 in	3 1/8 in	0 in	0 in	0 in
Kangaroo Pocket Width @ Top	xM7Kt9	1/8 in	0 in	0 in	11 1/4 in	0 in	0 in	0 in
Kangaroo Pocket Width @ Cuff Seam	Za2wBS	1/8 in	0 in	0 in	15 1/4 in	0 in	0 in	0 in
Kangaroo Pocket Width @ Widest	b78t0k	1/8 in	0 in	0 in	17 in	0 in	0 in	0 in
Kangaroo Pocket Opening Length (Bartack to Bartack)	rxW9Jh	1/8 in	0 in	0 in	6 in	0 in	0 in	0 in
Turnback Height @ Pocket Opening	flzInV	1/8 in	0 in	0 in	3/4 in	0 in	0 in	0 in



**Measured Size: M**

POINT OF MEASURE	CODE	TOLERANCE	EXPECTED	1ST PROTO - RCVD	VARIANCE	ADJUST BY +/-	REVISED SPEC	MEASUREMENT NOTES	MEASUREMENT STATUS
Body Length from CB Neck	L51T0o	1/4 in	0 in	25 1/4 in	25 1/4 in	25 1/4 in	25 1/4 in		-
Shoulder Seam Forward	ygRDFB	1/8 in	0 in	1/2 in	1/2 in	1/2 in	1/2 in		-
Shoulder Drop from HPS	wQ4qr9	1/8 in	0 in	2 1/2 in	2 1/2 in	2 1/2 in	2 1/2 in		-
Shoulder Width (Sm to Sm)	Rt4BS0	1/4 in	0 in	25 3/4 in	25 3/4 in	25 3/4 in	25 3/4 in		-
Across Front @ 6" Blw HPS	KBgWIO	1/4 in	0 in	23 1/2 in	23 1/2 in	23 1/2 in	23 1/2 in		-
Across Back @ 6" Blw HPS	vxCJU5	1/4 in	0 in	24 in	24 in	24 in	24 in		-
Chest @ 1" Blw Armhole	zuEYg1	3/8 in	0 in	26 1/2 in	26 1/2 in	26 1/2 in	26 1/2 in		-
Bottom Sweep @ 1" Above Cuff Seam	E40dli	3/8 in	0 in	24 3/4 in	24 3/4 in	24 3/4 in	24 3/4 in		-
Bottom Sweep @ Edge	tKtZ6U	3/8 in	0 in	20 1/4 in	20 1/4 in	20 1/4 in	20 1/4 in		-
Cuff Height @ Sweep	lqURGW	1/8 in	0 in	2 3/4 in	2 3/4 in	2 3/4 in	2 3/4 in		-
Sleeve Length From CB Neck to Cuff Edge (3-Point Measurement)	A4qCGQ	3/8 in	0 in	35 3/4 in	35 3/4 in	35 3/4 in	35 3/4 in		-
Armhole Straight (Sm to Sm)	hkBlb8	1/4 in	0 in	11 1/2 in	11 1/2 in	11 1/2 in	11 1/2 in		-
Bicep @ 1" Blw Armhole	ZFbGF	1/4 in	0 in	11 in	11 in	11 in	11 in		-
Elbow @ Half of Inseam (Excl Cuff)	0R4AXC	1/4 in	0 in	8 3/8 in	8 3/8 in	8 3/8 in	8 3/8 in		-
Sleeve Opening @ 1" Above Cuff Seam	08zjxU	1/4 in	0 in	5 7/8 in	5 7/8 in	5 7/8 in	5 7/8 in		-
Sleeve Opening on Edge	evuF23	1/8 in	0 in	3 1/2 in	3 1/2 in	3 1/2 in	3 1/2 in		-
Sleeve Cuff Height	cHRgwT	1/8 in	0 in	2 3/4 in	2 3/4 in	2 3/4 in	2 3/4 in		-
Neck Width @ HPS (Sm to Sm)	mKoBax	1/8 in	0 in	8 1/2 in	8 1/2 in	8 1/2 in	8 1/2 in		-
Front Neck Drop (HPS to CF Neck Sm)	TjF8iY	1/8 in	0 in	4 1/4 in	4 1/4 in	4 1/4 in	4 1/4 in		-
Back Neck Drop (HPS to CB Neck Sm)	30zyGo	1/8 in	0 in	1 in	1 in	1 in	1 in		-
Hood Height @ Opening (from CF Neck to Top Edge)	y7RXJh	1/8 in	0 in	15 1/2 in	15 1/2 in	15 1/2 in	15 1/2 in		-
Hood Height @ HPS	CilGYS	1/4 in	0 in	13 3/4 in	13 3/4 in	13 3/4 in	13 3/4 in		-
Hood Width @ 5" Blw Top Edge	LmTEaK	1/8 in	0 in	10 1/2 in	10 1/2 in	10 1/2 in	10 1/2 in		-
Hood Length @ CB Seam	qFhICD	1/4 in	0 in	0 in	0 in	0 in	0 in		-
Hood Tunnel Height @ Opening	Rlm51r	1/8 in	0 in	0 in	0 in	0 in	0 in		-
Eyelet Placement (CF Neck Seam to Bottom of Eyelet)	JW2tiN	1/8 in	0 in	0 in	0 in	1 in	1 in		-
Drawcord Drop (Exposed Length)	xmREXa	1/4 in	0 in	0 in	0 in	7 in	7 in	Reduce Length	See New Value
Kangaroo Pocket Height @ CF	Ci9Rz1	1/8 in	0 in	8 1/2 in	8 1/2 in	8 1/2 in	8 1/2 in		-
Kangaroo Pocket Height @ Sides	f8PY9O	1/8 in	0 in	3 1/8 in	3 1/8 in	3 1/8 in	3 1/8 in		-
Kangaroo Pocket Width @ Top	xM7Ki9	1/8 in	0 in	11 3/4 in	11 3/4 in	11 1/4 in	11 1/4 in	Reduce -1/2"	See New Value
Kangaroo Pocket Width @ Cuff Seam	Za2wBS	1/8 in	0 in	15 3/4 in	15 3/4 in	15 1/4 in	15 1/4 in	Reduce -1/2"	See New Value
Kangaroo Pocket Width @ Widest	b78t0k	1/8 in	0 in	17 1/2 in	17 1/2 in	17 in	17 in	Reduce -1/2"	See New Value
Kangaroo Pocket Opening Length (Bartack to Bartack)	rxW9Jh	1/8 in	0 in	6 in	6 in	6 in	6 in		-
Turnback Height @ Pocket Opening	flzInV	1/8 in	0 in	3/4 in	3/4 in	3/4 in	3/4 in		-



9/5 design notes - Genny Mayden

CREATED ON SEP 8, 2025 5:25 PM

Please submit strikeoff in smaller artwork size.  
Please match all details to FW24 Stussy Hoodie - see image





IMG\_0796.jpg



## Fitting 9.5.25 - Freelance Account

CREATED ON SEP 8, 2025 7:38 PM

### **FIT/CONSTRUCTION**

**\*\*The overall fit looks great> target specs were updated to match the sample**

**\*\*Kangaroo Pocket:**

- reduce the entire kangaroo pocket width -1/2"> follow updated target specs

**\*\*Hood:**

- shorten the drawcord to 7" exposed on each side> keep knotted ends
- the crown is too pointy> please shave-off 1/4" from the curve

### **CONSTRUCTION/WORKMANSHIP**

- revise all coverlock to 1/4" split needle top stitch (bottom coverstitch)
- each side of the seam needs to be flat - see image below for reference

Thanks,

FIT :

1. Nhìn tổng thể khá tốt >> Tuy nhiên, revised 1 vài điểm , vui lòng follow BTS.
2. Túi : Đã revised BTS vui lòng follow BTS
3. Nón :

- Dây rút mũ (drawcord): để hở 7 inch mỗi bên, đầu dây vẫn thắt nút.
- Phần đỉnh mũ đang quá nhọn → cần mài bớt 1/4 inch để bớt nhọn.

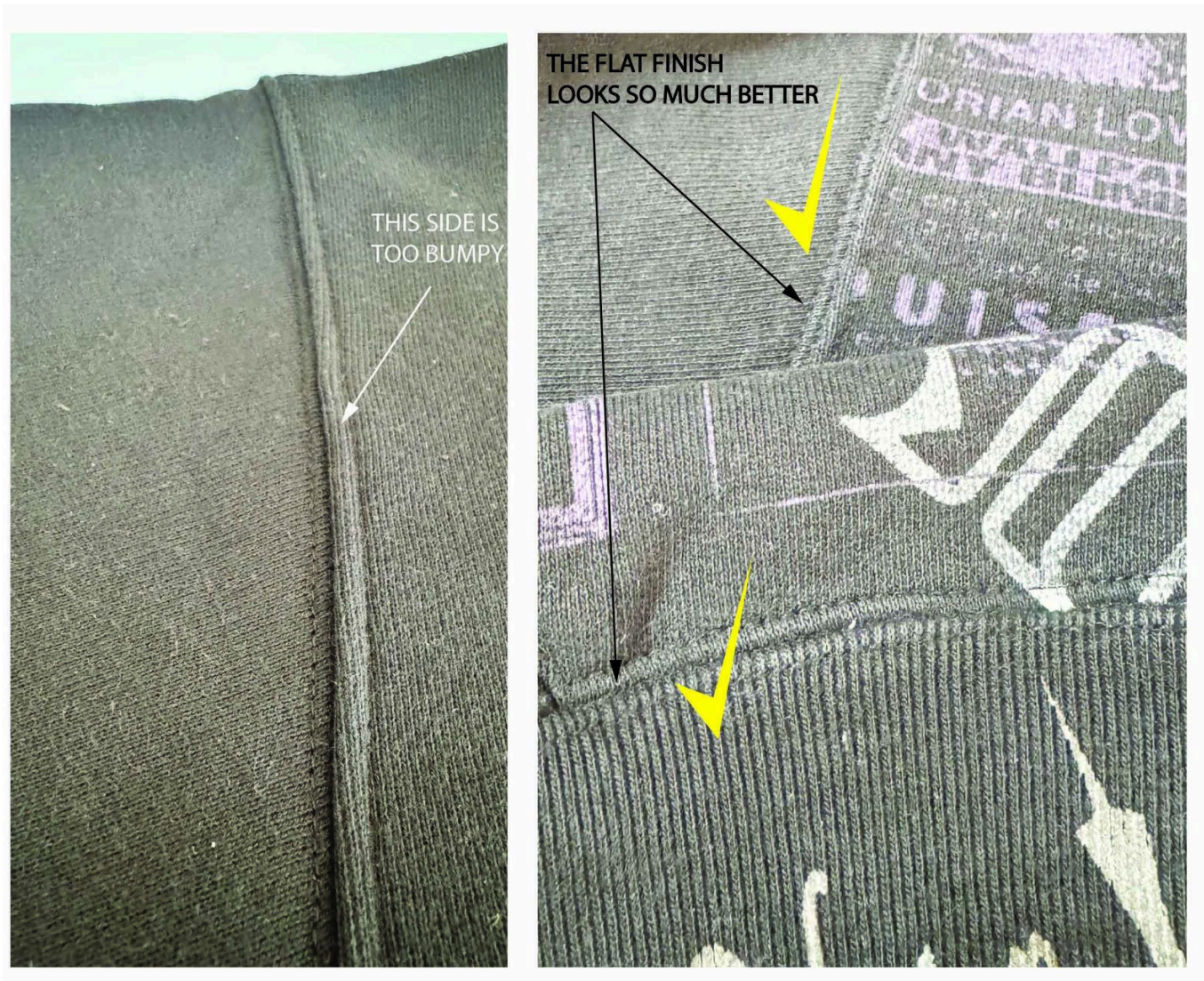
QUY CÁCH MAY

- Thay đổi tất cả đường đánh bông sang điều rẻ 2 kim 1/4"



Stussy Tears Hoodie - 1st Proto 9.8.25.jpg





Split Needle Finish.jpg