



Oxidized Cotton Wreath Thermal - Style #SS26TKT1518

Mens, Thermal, Spring/Summer, 2026

Summary

06-30-2025

DENIM TEARS	TOPS: OXIDIZED COTTON WREATH THERMAL	SEASON: SP26	DESIGNER: TINA
	FACTORY: FACTORY	COLLECTION: OUR LADY LIBERTY	VARIANTS: 3
SKETCH			



Name Oxidized Cotton Wreath Thermal

Style No. SS26TKT1518

Description Oxidized Cotton Wreath Thermal

Division Mens

Category Thermal

Season Spring/Summer

Year 2026

Size Scale **M** -Sample size

☐ XS ☐ S ☐ M ☐ L ☐ XL ☐ XXL

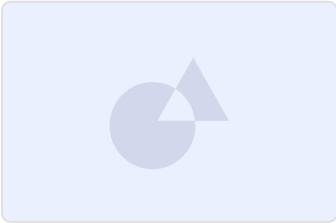
Created by/Author 6/30/2025

Genny Mayden
genny@denimtears.com

DENIM TEARS CONFIDENTIAL

UPDATED: XX/XX/XXXX

Oxidized Cotton Wreath Thermal



1. No Color Assigned

Style Color Code	Not Set
Carryover/New	Not Set

DENIM TEARS	TOPS: OXIDIZED COTTON WREATH THERM	ABEASON: SP26	DESIGNER: TINA
	FACTORY: FACTORY	COLLECTION: OUR LADY LIBERTY	VARIANTS: 3
SKETCH			



DENIM TEARS CONFIDENTIAL

UPDATED: XX/XX/XXXX

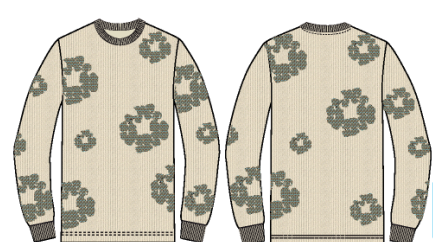
SP26-CottonWreathThermal-1

DENIM TEARS	TOPS: OXIDIZED COTTON WREATH THERM	ABEASON: SP26	DESIGNER: TINA
	FACTORY: FACTORY	COLLECTION: OUR LADY LIBERTY	VARIANTS: 3
COLORWAYS			




BLACK

SELF: BLACK
RIBBING: BLACK
STITCH: TONAL



TAN

SELF: TAN
RIBBING: TAN
STITCH: TONAL



LT TEAL

SELF: LT TEAL
RIBBING: LT TEAL
STITCH: TONAL

DENIM TEARS	TOPS: OXIDIZED COTTON WREATH THERMAL	BASE: SP26	DESIGNER: TINA
	FACTORY: FACTORY	COLLECTION: OUR LADY LIBERTY	VARIANTS: 3
COLOR & QUALITY STANDARDS			

ITEM	PLACEMENT	QUANTITY	SIZE	COLORWAY 1	COLORWAY 2	COLORWAY 3	
100% COTTON - XXXX	SELF: MAIN BODY			<div>LT TEAL - DUSTY JADE GREEN 15-5711 TCX</div>	<div>BLACK - JET BLACK 19-0303 TCX</div>	<div>LT TAN - SEEDPEARL 12-0703 TCX</div>	
2X1KNIT RIB- XXXX	SELF B: SLEEVE CUFF & NECK			<div>LT TEAL - DUSTY JADE GREEN 15-5711 TCX</div>	<div>BLACK - JET BLACK 19-0303 TCX</div>	<div>LT TAN - SEEDPEARL 12-0703 TCX</div>	
THREAD 1:	SELF: MAIN BODY			<div>LT TEAL - DUSTY JADE GREEN 15-5711 TCX</div>	<div>LT TEAL - DUSTY JADE GREEN 15-5711 TCX</div>	<div>LT TAN - SEEDPEARL 12-0703 TCX</div>	
WASH:	GARMENT			<div>45 MIN ENZYME WASH & SOFTENER</div>	<div>45 MIN ENZYME WASH & SOFTENER</div>	<div>45 MIN ENZYME WASH & SOFTENER</div>	

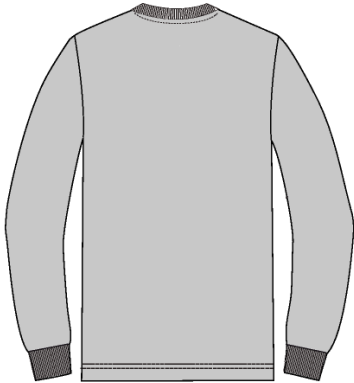
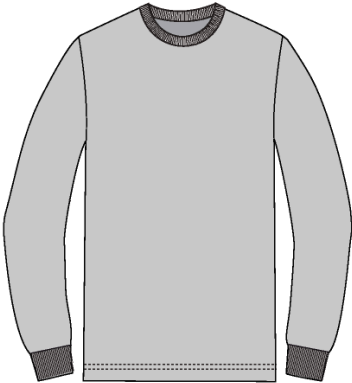
DENIM TEARS CONFIDENTIAL

UPDATED: XX/XX/XXXX

SP26-CottonWreathThermal-4

DENIM TEARS	TOPS: OXIDIZED COTTON WREATH THERM	ABEASON: SP26	DESIGNER: TINA
	FACTORY: FACTORY	COLLECTION: OUR LADY LIBERTY	VARIANTS: 3
CONTRUCTION			

PLEASE MATCH FIT/CONSTRUCTION
TO FW24 "C.R.E.A.M. THERMAL:



DENIM TEARS CONFIDENTIAL	UPDATED: XX/XX/XXXX
--------------------------	---------------------

SP26-CottonWreathThermal-3

DENIM TEARS

TOPS: OXIDIZED COTTON WREATH THERM

FACTORY: FACTORY

ABEASON: SP26

COLLECTION: OUR LADY LIBERTY

DESIGNER: TINA

VARIANTS: 3

GRAPHICS


ARTWORK TECHNIQUE: OXIDIZED TRIANGLE STUDS

NOT AT 100% ACTUAL SCALE

COTTON WREATH ALLOVER PATTERN:

TRIANGLE RIVET STUDS WITH PRONGED BACK:

5 MM




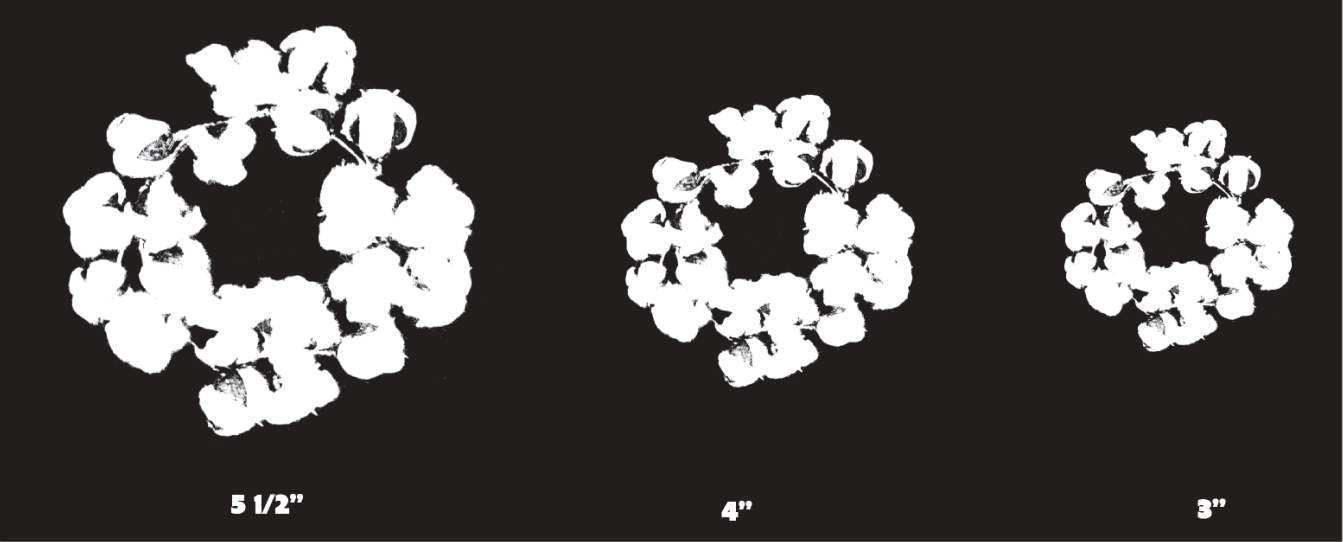
5 MM

*MATCH THESE FOR COLOR & FINISH ONLY.

ALL RIVET STUDS SHOULD BE TRIANGLE SHAPED

FOR COTTON WREATH ALL OVER PATTERN*





DENIM TEARS CONFIDENTIAL

UPDATED: XX/XX/XXXX

SP26-CottonWreathThermal-5

DENIM TEARS	TOPS: OXIDIZED COTTON WREATH THERM	ABEASON: SP26	DESIGNER: TINA
	FACTORY: FACTORY	COLLECTION: OUR LADY LIBERTY	VARIANTS: 3

ARTWORK PLACEMENT

*MATCH THIS STYLE FOR ARTWORK PLACEMENT & SCALE



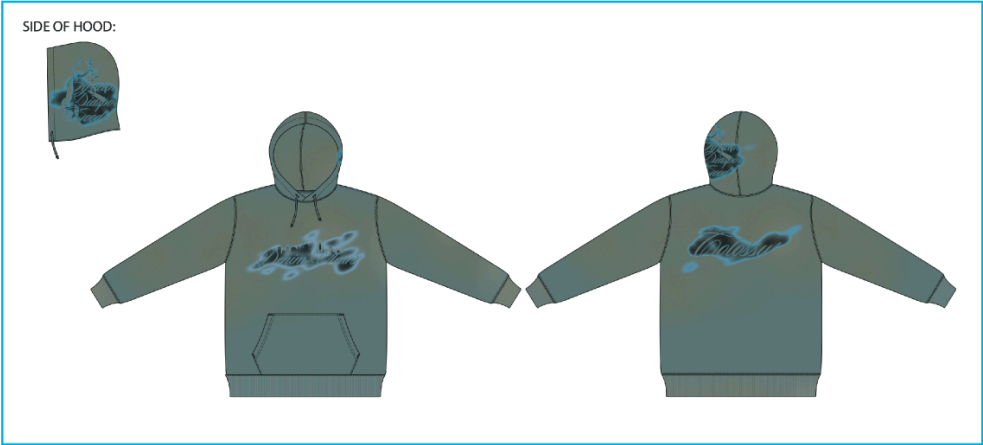
DENIM TEARS CONFIDENTIAL

UPDATED: XX/XX/XXXX

SP26-CottonWreathThermal-6

DENIM TEARS	TOPS: OXIDIZED COTTON WREATH THERMAL	SEASON: SP26	DESIGNER: TINA
	FACTORY: FACTORY	COLLECTION: OUR LADY LIBERTY	VARIANTS: 3
GRAPHICS			

SAME SPRAY DYE COLOR & PLACEMENT AS SP-26 H003 HOODIE FOR LT TEAL



Sample Size: M

POINT OF MEASURE	CODE	TOLERANCE	XS	S	M	L	XL	XXL
Back Body Length from CB Neck Seam	Pat8dp	1/4 in	0 in	0 in	27 1/2 in	0 in	0 in	0 in
Shoulder Seam Forward	xgRDFB	1/8 in	0 in	0 in	-1/4 in	0 in	0 in	0 in
Shoulder Drop from HPS	03dOTi	1/8 in	0 in	0 in	2 1/4 in	0 in	0 in	0 in
Shoulder Width (Sm to Sm)	Rt4BS0	1/4 in	0 in	0 in	19 1/2 in	0 in	0 in	0 in
Across Front @ 6" Blw HPS	KBgWIO	1/4 in	0 in	0 in	17 1/2 in	0 in	0 in	0 in
Across Back @ 6" Blw HPS	vxCJU5	1/4 in	0 in	0 in	17 1/2 in	0 in	0 in	0 in
Chest @ 1" Blw Armhole	zuEYg1	3/8 in	0 in	0 in	21 1/2 in	0 in	0 in	0 in
Bottom Sweep @ Edge	tKtZ6U	3/8 in	0 in	0 in	21 in	0 in	0 in	0 in
Turnback Height @ Sweep	LEiFO7	1/8 in	0 in	0 in	7/8 in	0 in	0 in	0 in
Sleeve Length From CB Neck to Cuff Edge (3-Point Measurement)	A4qCGQ	3/8 in	0 in	0 in	36 1/2 in	0 in	0 in	0 in
Armhole Straight (Sm to Sm)	hkBlb8	1/4 in	0 in	0 in	9 1/2 in	0 in	0 in	0 in
Bicep @ 1" Blw Armhole	ZFbGfF	1/4 in	0 in	0 in	8 3/4 in	0 in	0 in	0 in
Elbow @ Half of Inseam (Excl Cuff)	0R4AXC	1/4 in	0 in	0 in	6 3/4 in	0 in	0 in	0 in
Sleeve Width @ 1" Above Cuff	Bh7SGr	1/8 in	0 in	0 in	5 in	0 in	0 in	0 in
Sleeve Opening on Cuff Edge	evuF23	1/8 in	0 in	0 in	4 in	0 in	0 in	0 in
Sleeve Cuff Height	DPEe3X	1/8 in	0 in	0 in	2 5/8 in	0 in	0 in	0 in
Neck Width @ HPS (Sm to Sm)	mKoBax	1/8 in	0 in	0 in	8 3/4 in	0 in	0 in	0 in
Front Neck Drop (HPS to CF Neck Sm)	TjF8iY	1/8 in	0 in	0 in	4 1/4 in	0 in	0 in	0 in
Back Neck Drop (HPS to CB Neck Sm)	30zyGo	1/8 in	0 in	0 in	1 in	0 in	0 in	0 in
Neck Trim Height	AqR78o	1/8 in	0 in	0 in	3/4 in	0 in	0 in	0 in