



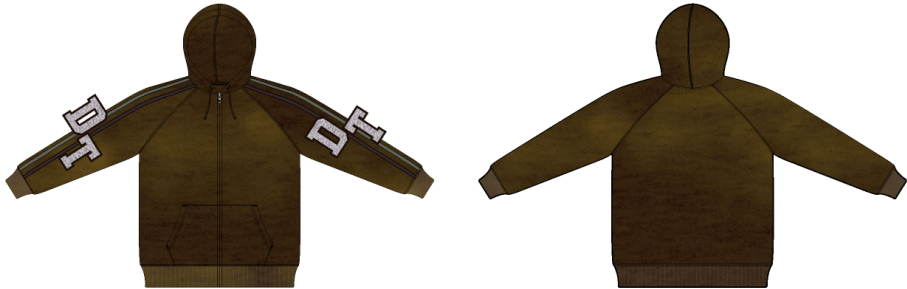
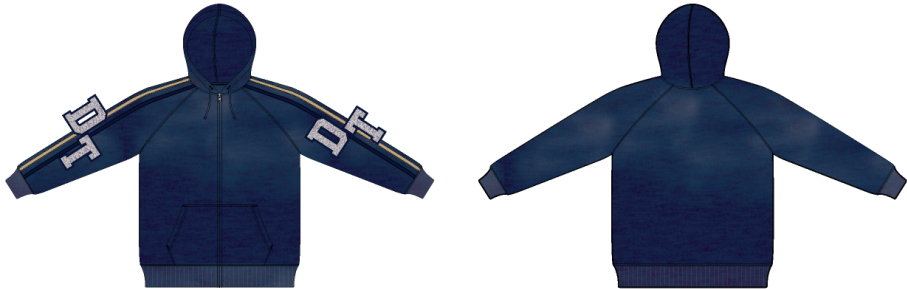
DT Chenille Embroidered Patch Zip Hoodie - Style #SS26TZH1420

Mens, Zip Hoodie, Spring/Summer, 2026

Summary

09-16-2025

DENIM TEARS	OUTERWEAR: H001 ZIP HOODIE	SEASON: SP26	DESIGNER: BRYCE
	FACTORY: FACTORY	COLLECTION: OUR LADY LIBERTY	VARIANTS: 3
SKETCH			



Name	DT Chenille Embroidered Patch Zip Hoodie
Style No.	SS26TZH1420
Description	DT Chenille Embroidered Patch Zip Up
Division	Mens
Category	Zip Hoodie
Season	Spring/Summer
Year	2026
Size Scale	M -Sample size

XS S M L XL XXL

Factory	Un-Available
Created by/Author	9/16/2025
	Genny Mayden
	genny@denimtears.com

DENIM TEARS CONFIDENTIAL

UPDATED: XX/XX/XXXX

DT Chenille Embroidered Patch Zip Hoodie

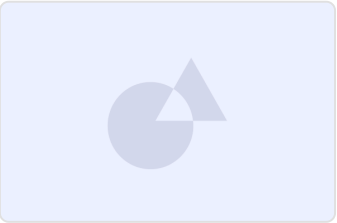


DT Chenille Embroidered Patch Zip Hoodie - Style #SS26TZH1420

Mens, Zip Hoodie, Spring/Summer, 2026

Color Variants

09-16-2025



1. No Color Assigned

Style Color Code

Not Set

Carryover/New

Not Set



DENIM TEARS	OUTERWEAR: H001 ZIP HOODIE	SEASON: SP26	DESIGNER: BRYCE
	FACTORY: FACTORY	COLLECTION: OUR LADY LIBERTY	VARIANTS: 3
SKETCH			

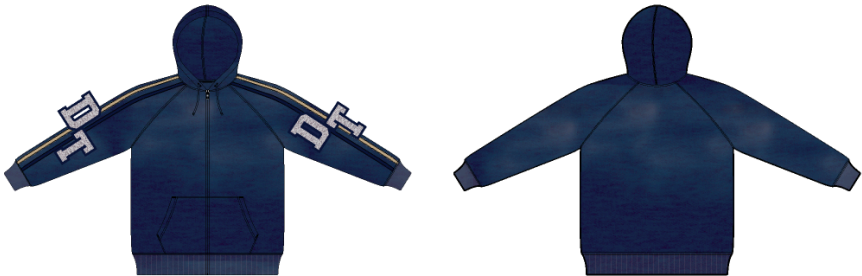


DENIM TEARS CONFIDENTIAL	UPDATED: XX/XX/XXXX
--------------------------	---------------------

SP26-H001_Zip Hoodie_9-1

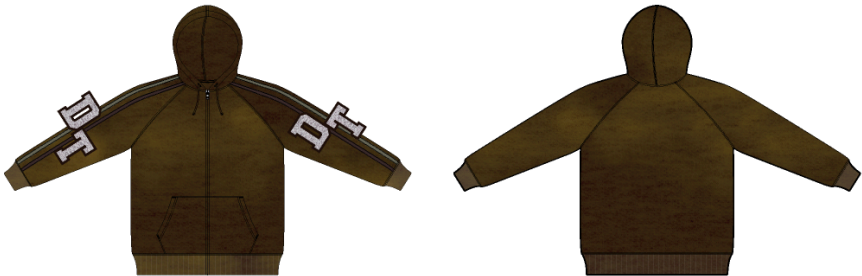


DENIM TEARS	OUTERWEAR: H001 ZIP HOODIE	SEASON: SP26	DESIGNER: BRYCE
	FACTORY: FACTORY	COLLECTION: OUR LADY LIBERTY	VARIANTS: 3
COLORWAYS			



NAVY

SELF A: NAVY
SELF B: TAN
SELF C: NAVY
RIBBING: NAVY
STITCH: TONAL
EMBROIDERED EYELET: NAVY
DRAWCORD: NAVY
ZIPPER TAPE: NAVY
ZIPPER TEETH & PULL: NICKEL


























DK BROWN

SELF A: DK BROWN
SELF B: OLIVE
SELF C: DK BROWN
RIBBING: DK BROWN
STITCH: TONAL
EMBROIDERED EYELET: DK BROWN
DRAWCORD: DK BROWN
ZIPPER TAPE: DK BROWN
ZIPPER TEETH & PULL: NICKEL



DENIM TEARS	OUTERWEAR: H001 ZIP HOODIE	SEASON: SP26	DESIGNER: BRYCE
	FACTORY: FACTORY	COLLECTION: OUR LADY LIBERTY	VARIANTS: 3
COLOR & QUALITY STANDARDS			

ITEM	PLACEMENT	QUANTITY	SIZE	COLORWAY 1	COLORWAY 2		
100% COTTON - XXXX	SELF A: MAIN BODY			 NAVY - NAVY BLAZER 19-3923 TCX	 DK BROWN - PUCE 19-1518 TCX		
100% COTTON TWILL -	SELF B: TOP APPLIED PANELS 			 TAN - CURDS & WHEY 16-0920 TCX	 DK GREEN - OVERLAND TREK 17-0619 TCX		
100% COTTON TWILL -	SELF C: TOP APPLIED PANELS 			 NAVY - NAVY BLAZER 19-3923 TCX	 DK BROWN - PUCE 19-1518 TCX		
2X1KNIT RIB- XXXX	SELF D: SLEEVE CUFF & HEM			 NAVY - NAVY BLAZER 19-3923 TCX	 DK BROWN - PUCE 19-1518 TCX		
BASKETWEAVE FLAT DRAWCORD - 100% HIGH DENSITY COTTON	TRIM A: HOOD	1	1/4" WIDE	 NAVY - NAVY BLAZER 19-3923 TCX	 DK BROWN - PUCE 19-1518 TCX		
ZIPPER TEETH & PULL - YKK METAL OPEN END	TRIM B: CENTER FRONT	1	#5	 NICKEL	 NICKEL		
ZIPPER TAPE	TRIM B: CENTER FRONT	1		 DTM NAVY	 DTM DK BROWN		
TWILL TAPE - 100% COTTON	TRIM C: BACK NECK 	1	3/8" WIDE	 NAVY - NAVY BLAZER 19-3923 TCX	 DK BROWN - PUCE 19-1518 TCX		
THREAD 1:	SELF A: MAIN BODY, EMBROIDERED EYELET, BNT			 DTM NAVY	 DTM DK BROWN		
THREAD 2:	SELF B: TOP APPLIED PANEL			 TAN - CURDS & WHEY 16-0920 TCX	 DK GREEN - OVERLAND TREK 17-0619 TCX		
WASH:	GARMENT			45 MIN ENZYME & SOFTENER, POTASSIUM SPRAY	45 MIN ENZYME & SOFTENER, POTASSIUM SPRAY		

DENIM TEARS CONFIDENTIAL	UPDATED: XX/XX/XXXX
--------------------------	---------------------

SP26-H001_Zip Hoodie_9-4



DENIM TEARS	OUTERWEAR: H001 ZIP HOODIE	SEASON: SP26	DESIGNER: BRYCE
	FACTORY: FACTORY	COLLECTION: OUR LADY LIBERTY	VARIANTS: 3
1ST PROTO - COMMENTS			

DESIGN

- Removing top applied stripes at CF
- Top applied stripe color not correct, please follow TP
- Placement of sleeve stripes is moving back, @Misha will follow with spec updates

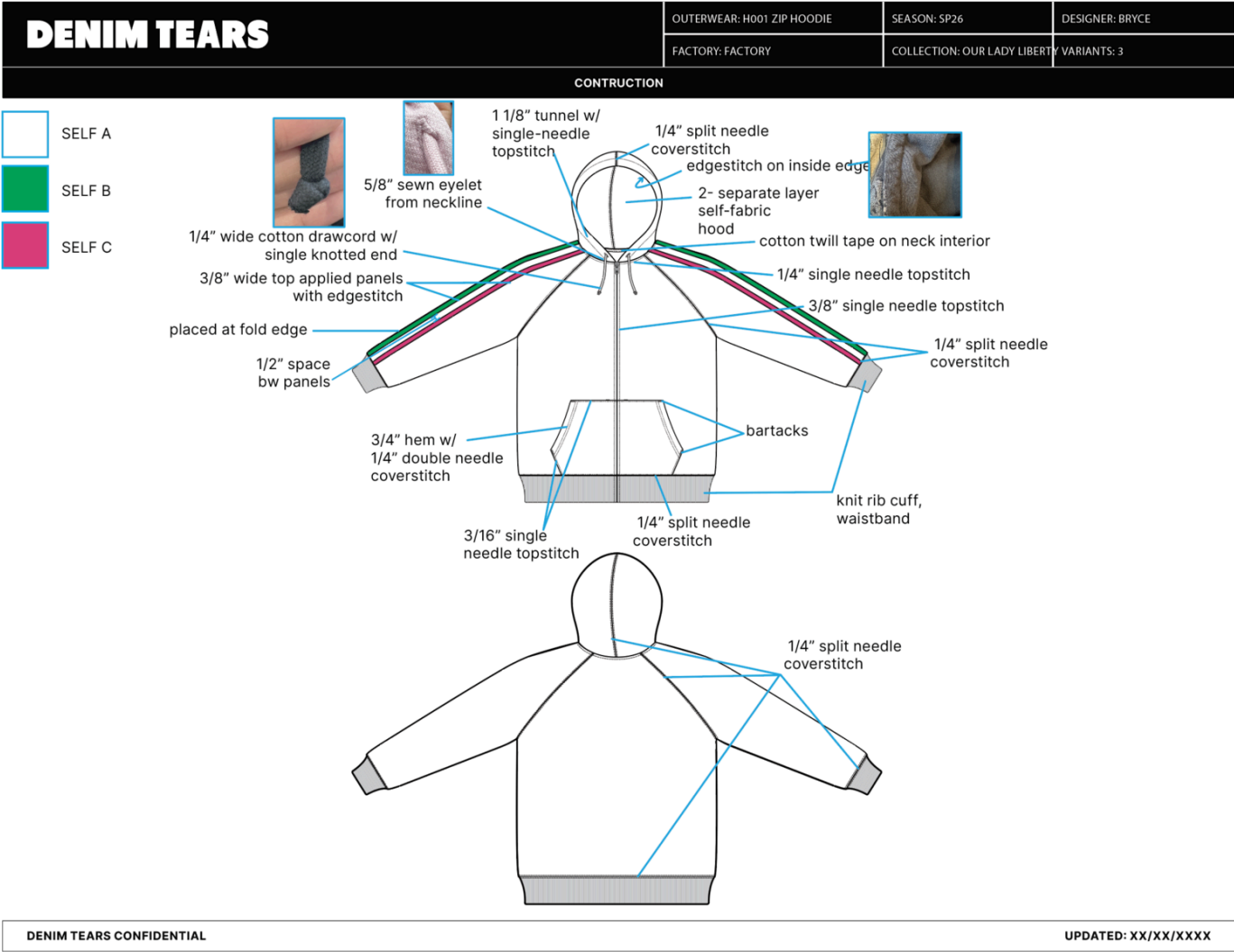
GRAPHIC

- Chenille embroidery patch changing from white to pantone warm gray 1c
- Updated chenille patch color for Dk Brown colorway

FIT

- @Misha will follow with fit comments







DENIM TEARS	OUTERWEAR: H001 ZIP HOODIE	SEASON: SP26	DESIGNER: BRYCE
	FACTORY: FACTORY	COLLECTION: OUR LADY LIBERTY	VARIANTS: 3

GRAPHICS

CHENILLE APPLIQUE WITH FELT BACKING & ZIG ZAG OUTLINE
5" WIDE, 6" TALL *ACTUAL SCALE*

The image shows a large 'DT' logo. The 'D' is approximately 5 inches wide and 6 inches tall. The 'T' is positioned to the right of the 'D'. The entire logo is made of a light-colored chenille material with a dark blue zig-zag outline. Blue dimension lines indicate the width of the 'D' and the height of the 'D'.

DENIM TEARS CONFIDENTIAL

UPDATED: XX/XX/XXXX

SP26-H001_Zip Hoodie_9-5



DENIM TEARS	OUTERWEAR: H001 ZIP HOODIE	SEASON: SP26	DESIGNER: BRYCE
	FACTORY: FACTORY	COLLECTION: OUR LADY LIBERTY	VARIANTS: 3
ARTWORK PLACEMENT			



NAVY HOODIE:

FELT BACKING & ZIG ZAG STITCH OUTLINE:
NAVY - NAVY BLAZER
19-3923 TCX

DT

CHENILLE:
PANTONE
WARM GRAY 1C

PANTONE

19-3923 TCX

DK BROWN HOODIE:

FELT BACKING & ZIG ZAG STITCH OUTLINE:
DK BROWN - PUCE
19-1518 TCX

DT

CHENILLE:
PANTONE
WARM GRAY 1C

PANTONE

19-1518 TCX

MATCH THIS FOR QUALITY

DENIM TEARS CONFIDENTIAL

UPDATED: XX/XX/XXXX

SP26-H001_Zip Hoodie_9-6

Created with backbone

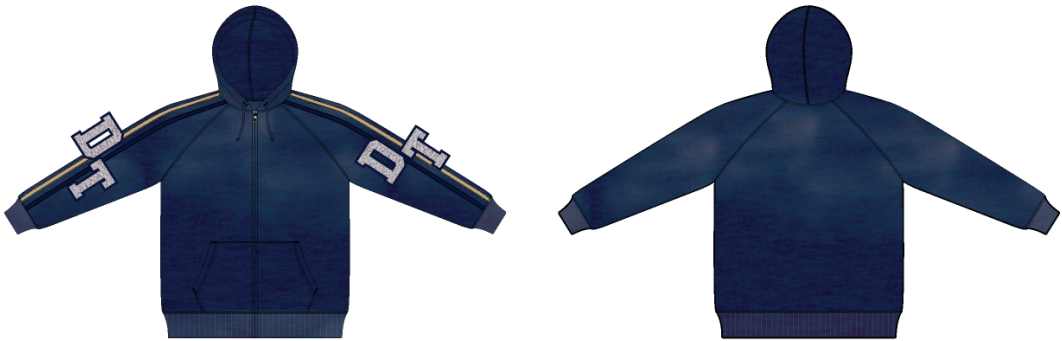
© Denim Tears

Page 9 of 18



DENIM TEARS	OUTERWEAR: H001 ZIP HOODIE	SEASON: SP26	DESIGNER: BRYCE
	FACTORY: FACTORY	COLLECTION: OUR LADY LIBERTY	VARIANTS: 3
WASH PLACEMENT			

MATCH SIMILAR TO CAD FOR POTASSIUM SPRAY



Sample Size: M

POINT OF MEASURE	CODE	TOLERANCE	XS	S	M	L	XL	XXL
Body Length from CB Neck	L51T0o	1/4 in	0 in	0 in	26 1/2 in	0 in	0 in	0 in
Shoulder Drop from HPS (23" Shoulder Width Ref Point)	wQ4qr9	1/8 in	0 in	0 in	2 5/8 in	0 in	0 in	0 in
Across Front @ 6" Blw HPS	KBgWIO	1/4 in	0 in	0 in	0 in	0 in	0 in	0 in
Across Back @ 6" Blw HPS	vxCJU5	1/4 in	0 in	0 in	0 in	0 in	0 in	0 in
Chest @ 1" Blw Armhole	zuEYg1	3/8 in	0 in	0 in	25 1/4 in	0 in	0 in	0 in
Bottom Sweep @ 1" Above Cuff Seam	E40dli	3/8 in	0 in	0 in	24 1/4 in	0 in	0 in	0 in
Bottom Sweep @ Edge	tKtZ6U	3/8 in	0 in	0 in	19 3/4 in	0 in	0 in	0 in
Cuff Height @ Sweep	lqURGW	1/8 in	0 in	0 in	2 5/8 in	0 in	0 in	0 in
Front Raglan Seam Placement from HPS @ Front Neck	8jWgXK	1/8 in	0 in	0 in	0 in	0 in	0 in	0 in
Back Raglan Seam Placement @ Neck	mffFgx	1/8 in	0 in	0 in	0 in	0 in	0 in	0 in
Front Raglan Seam Length from Nk Sm to SS	U6mA9c	1/4 in	0 in	0 in	0 in	0 in	0 in	0 in
Back Raglan Seam Length from Nk Sm to SS	c934jJ	1/4 in	0 in	0 in	0 in	0 in	0 in	0 in
Sleeve Length From HPS to Cuff Edge (Straight)	A4qCGQ	3/8 in	0 in	0 in	36 1/2 in	0 in	0 in	0 in
Armhole Drop From HPS	hkBlb8	1/4 in	0 in	0 in	10 1/2 in	0 in	0 in	0 in
Bicep @ 1" Blw Armhole	ZFbGfF	1/4 in	0 in	0 in	10 1/4 in	0 in	0 in	0 in
Elbow @ Half of Inseam (Excl Cuff)	0R4AXC	1/4 in	0 in	0 in	8 1/4 in	0 in	0 in	0 in
Sleeve Opening @ 1" Above Cuff Seam	08zjxU	1/4 in	0 in	0 in	6 1/4 in	0 in	0 in	0 in
Sleeve Opening on Edge	evuF23	1/8 in	0 in	0 in	4 1/8 in	0 in	0 in	0 in
Sleeve Cuff Height	cHRgwT	1/8 in	0 in	0 in	2 5/8 in	0 in	0 in	0 in
Neck Width @ HPS (Sm to Sm)	mKoBax	1/8 in	0 in	0 in	9 1/2 in	0 in	0 in	0 in
Front Neck Drop (HPS to CF Neck Sm)	TjF8iY	1/8 in	0 in	0 in	3 7/8 in	0 in	0 in	0 in
Back Neck Drop (HPS to CB Neck Sm)	30zyGo	1/8 in	0 in	0 in	1 in	0 in	0 in	0 in
Hood Height @ Opening (from CF Neck to Top Edge)	y7RXJh	1/8 in	0 in	0 in	16 in	0 in	0 in	0 in
Hood Height @ HPS	CilGYS	1/4 in	0 in	0 in	14 1/4 in	0 in	0 in	0 in
Hood Width @ 5" Blw Top Edge	LmTEaK	1/8 in	0 in	0 in	11 in	0 in	0 in	0 in
Hood Length @ CB Seam	qFhlCD	1/4 in	0 in	0 in	21 3/4 in	0 in	0 in	0 in
Hood Tunnel Height @ Opening	Rlm51r	1/8 in	0 in	0 in	1 in	0 in	0 in	0 in
Eyelet Placement (CF Neck Seam to Bottom of Eyelet)	JW2tiN	1/8 in	0 in	0 in	1 in	0 in	0 in	0 in
Drawcord Drop (Exposed Length)	xmREXa	1/4 in	0 in	0 in	7 in	0 in	0 in	0 in
Kangaroo Pocket Height @ CF	sTDD5N	1/8 in	0 in	0 in	8 1/4 in	0 in	0 in	0 in
Kangaroo Pocket Height @ Sides	WK6RrV	1/8 in	0 in	0 in	3 in	0 in	0 in	0 in
Kangaroo Width from CF @ Top Edge (Each Side)	RrmoVB	1/4 in	0 in	0 in	5 5/8 in	0 in	0 in	0 in
Kangaroo Width from CF @ Cuff Seam (Each Side)	E14Gq	1/4 in	0 in	0 in	7 5/8 in	0 in	0 in	0 in
Kangaroo Width from CF @ Widest (Each Side)	2liSI	1/4 in	0 in	0 in	8 1/4 in	0 in	0 in	0 in
Kangaroo Pocket Opening Length (Bartack to Bartack)	smuBA0	1/8 in	0 in	0 in	5 3/4 in	0 in	0 in	0 in
Turnback Height @ Pocket Opening	NicmOZ	1/8 in	0 in	0 in	3/4 in	0 in	0 in	0 in
CF Zipper Length	HOU7IU	1/4 in	0 in	0 in	24 in	0 in	0 in	0 in
CF Zipper Welt Width (Each Side)	HWjLwW	1/16 in	0 in	0 in	3/8 in	0 in	0 in	0 in

Measured Size: M

POINT OF MEASURE	CODE	TOLERANCE	EXPECTED	1ST PROTO - RCVD	VARIANCE	ADJUST BY +/-	REVISED SPEC	MEASUREMENT NOTES	MEASUREMENT STATUS
Body Length from CB Neck	L51T0o	1/4 in	26 1/2 in	26 5/8 in	1/8 in	0 in	26 1/2 in		-
Shoulder Drop from HPS (23" Shoulder Width Ref Point)	wQ4qr9	1/8 in	2 5/8 in	3 in	3/8 in	0 in	2 5/8 in		Back To Spec
Across Front @ 6" Blw HPS	KBgWIO	1/4 in	0 in	14 1/4 in	14 1/4 in	14 3/4 in	14 3/4 in	Increase +1/2"	See New Value
Across Back @ 6" Blw HPS	vxCJU5	1/4 in	0 in	15 1/2 in	15 1/2 in	15 in	15 in	Reduce -1/2"	See New Value
Chest @ 1" Blw Armhole	zuEYg1	3/8 in	25 1/4 in	25 1/2 in	1/4 in	0 in	25 1/4 in		-
Bottom Sweep @ 1" Above Cuff Seam	E40dli	3/8 in	24 1/4 in	24 in	-1/4 in	0 in	24 1/4 in		-
Bottom Sweep @ Edge	tKiZ6U	3/8 in	19 3/4 in	19 3/4 in	0 in	0 in	19 3/4 in		-
Cuff Height @ Sweep	lqURGW	1/8 in	2 5/8 in	2 5/8 in	0 in	0 in	2 5/8 in		-
Front Raglan Seam Placement from HPS @ Front Neck	8jWgXK	1/8 in	0 in	2 3/4 in	2 3/4 in	2 3/4 in	2 3/4 in		-
Back Raglan Seam Placement @ Neck	mFFqgx	1/8 in	0 in	2 1/4 in	2 1/4 in	2 1/2 in	2 1/2 in		-
Front Raglan Seam Length from Nk Sm to SS	U6mA9c	1/4 in	0 in	15 in	15 in	0 in	0 in		-
Back Raglan Seam Length from Nk Sm to SS	c934jJ	1/4 in	0 in	16 1/2 in	16 1/2 in	0 in	0 in		-
Sleeve Length From HPS to Cuff Edge (Straight)	A4qCGQ	3/8 in	36 1/2 in	30 in	-6 1/2 in	-5 1/4 in	31 1/4 in	Increase +1 1/4"	See New Value
Armhole Drop From HPS	hkBlb8	1/4 in	10 1/2 in	13 1/2 in	3 in	-10 1/2 in	0 in	TBD	-
Bicep @ 1" Blw Armhole	ZFbGfF	1/4 in	10 1/4 in	10 1/8 in	-1/8 in	0 in	10 1/4 in		-
Elbow @ Half of Inseam (Excl Cuff)	0R4AXC	1/4 in	8 1/4 in	8 1/8 in	-1/8 in	0 in	8 1/4 in		-
Sleeve Opening @ 1" Above Cuff Seam	08zjxU	1/4 in	6 1/4 in	6 3/8 in	1/8 in	0 in	6 1/4 in		-
Sleeve Opening on Edge	evuF23	1/8 in	4 1/8 in	4 1/8 in	0 in	0 in	4 1/8 in		-
Sleeve Cuff Height	cHRgwT	1/8 in	2 5/8 in	2 5/8 in	0 in	0 in	2 5/8 in		-
Neck Width @ HPS (Sm to Sm)	mKoBax	1/8 in	9 1/2 in	9 1/2 in	0 in	0 in	9 1/2 in		-
Front Neck Drop (HPS to CF Neck Sm)	TjF8iY	1/8 in	3 7/8 in	3 7/8 in	0 in	0 in	3 7/8 in		-
Back Neck Drop (HPS to CB Neck Sm)	30zyGo	1/8 in	1 in	1 in	0 in	0 in	1 in		-
Hood Height @ Opening (from CF Neck to Top Edge)	y7RXJh	1/8 in	16 in	16 in	0 in	0 in	16 in		-
Hood Height @ HPS	CilGYS	1/4 in	14 1/4 in	14 1/4 in	0 in	0 in	14 1/4 in		-
Hood Width @ 5" Blw Top Edge	LmTEaK	1/8 in	11 in	10 7/8 in	-1/8 in	0 in	11 in		-
Hood Length @ CB Seam	qFhlCD	1/4 in	21 3/4 in	0 in	0 in	0 in	21 3/4 in		-
Hood Tunnel Height @ Opening	Rlm51r	1/8 in	1 in	7/8 in	-1/8 in	0 in	1 in		-
Eyelet Placement (CF Neck Seam to Bottom of Eyelet)	JW2tiN	1/8 in	1 in	1 3/8 in	3/8 in	0 in	1 in		-
Drawcord Drop (Exposed Length)	xmREXa	1/4 in	7 in	6 1/2 in	-1/2 in	0 in	7 in		-
Kangaroo Pocket Height @ CF	sTDD5N	1/8 in	8 1/4 in	8 1/4 in	0 in	0 in	8 1/4 in		-
Kangaroo Pocket Height @ Sides	WK6RrV	1/8 in	3 in	3 in	0 in	0 in	3 in		-
Kangaroo Width from CF @ Top Edge (Each Side)	RrmoVB	1/4 in	5 5/8 in	5 7/8 in	1/4 in	0 in	5 5/8 in		-
Kangaroo Width from CF @ Cuff Seam (Each Side)	E14Gq	1/4 in	7 5/8 in	7 5/8 in	0 in	0 in	7 5/8 in		-
Kangaroo Width from CF @ Widest (Each Side)	2liSI	1/4 in	8 1/4 in	8 1/2 in	1/4 in	0 in	8 1/4 in		-
Kangaroo Pocket Opening Length (Bartack to Bartack)	smuBA0	1/8 in	5 3/4 in	5 7/8 in	1/8 in	0 in	5 3/4 in		-
Turnback Height @ Pocket Opening	NicmOZ	1/8 in	3/4 in	3/4 in	0 in	0 in	3/4 in		-
CF Zipper Length	H0U7IU	1/4 in	24 in	23 1/2 in	-1/2 in	-1/2 in	23 1/2 in		Keep As Sample
CF Zipper Welt Width (Each Side)	HWjLwW	1/16 in	3/8 in	3/8 in	0 in	0 in	3/8 in		-



DENIM TEARS	OUTERWEAR: H001 ZIP HOODIE	SEASON: SP26	DESIGNER: BRICE
	FACTOR[: FACTOR[COLLECTION: OUR LAD[LIBERT[VARIANTS: 3
1ST PROTO - COMMENTS			

DESIGN

- Removing top applied stripes at CF
- Top applied stripe color not correct, please follow TP
- Placement of sleeve stripes is moving back, @Misha will follow with spec updates

GRAPHIC

- Chenille embroidery patch color changing from white to pantone warm gray 1c
- Updated chenille patch color for Dk Brown colorway

FIT

- @Misha will follow with fit comments



DENIM TEARS CONFIDENTIAL	UPDATED: XX/XX/XXXX
--------------------------	---------------------

Screen Shot 2025-09-08 at 3.07.46 PM.jpg



Fitting 9.5.25 - Freelance Account

CREATED ON SEP 15, 2025 7:32 PM

****The overall fit should follow our Standard Zip Hoodie Block**

FIT/PATTERN

- 1) Body Length - ok as per sample
- 2) Shoulder Slope is too deep> please adjust sleeves so the slope finishes at 2 5/8"
- 3) Re-shape front and back raglans as per **image A**
 - across front will be increased +1/2"
 - across back will be reduced -1/2"
- 4) Body Width looks good
- 5) Sleeve/ Armhole
 - increase sleeve length +1 1/4"
 - after adjusting the slope, please maintain bicep at 10 1/4"> AH will be raised
- 6) Neck looks good and is on spec
- 7) Hood - see **image B**:
 - please match the shape of the Zip Hoodie Block but keep construction as per proto
 - add edge stitch at the interior side at the hood opening
 - make the interior layer slightly smaller than the top layer so it fits better
 - eyelets sit too high> drop by 3/8"

CONSTRUCTION/WORKMANSHIP - see **image C**:

- 1) Kangaroo pocket: top and side edges should have 3/16" single needle top stitch to create a lip
- 2) Remove top applied stripes from CF
- 3) Shift stripes at sleeve backward> they should be placed next to the sleeve folded edge
- 4) All coverstitch should be revised to 1/4" split needle to pstitch> please keep each side of the seam flat without bumps
- 5) Zipper pull at CF Zipper should be at Wr's Right Side

Thanks,



SS26TZH1420DT Chenille Embroidered Patch Zip Hoodie - 1st Proto

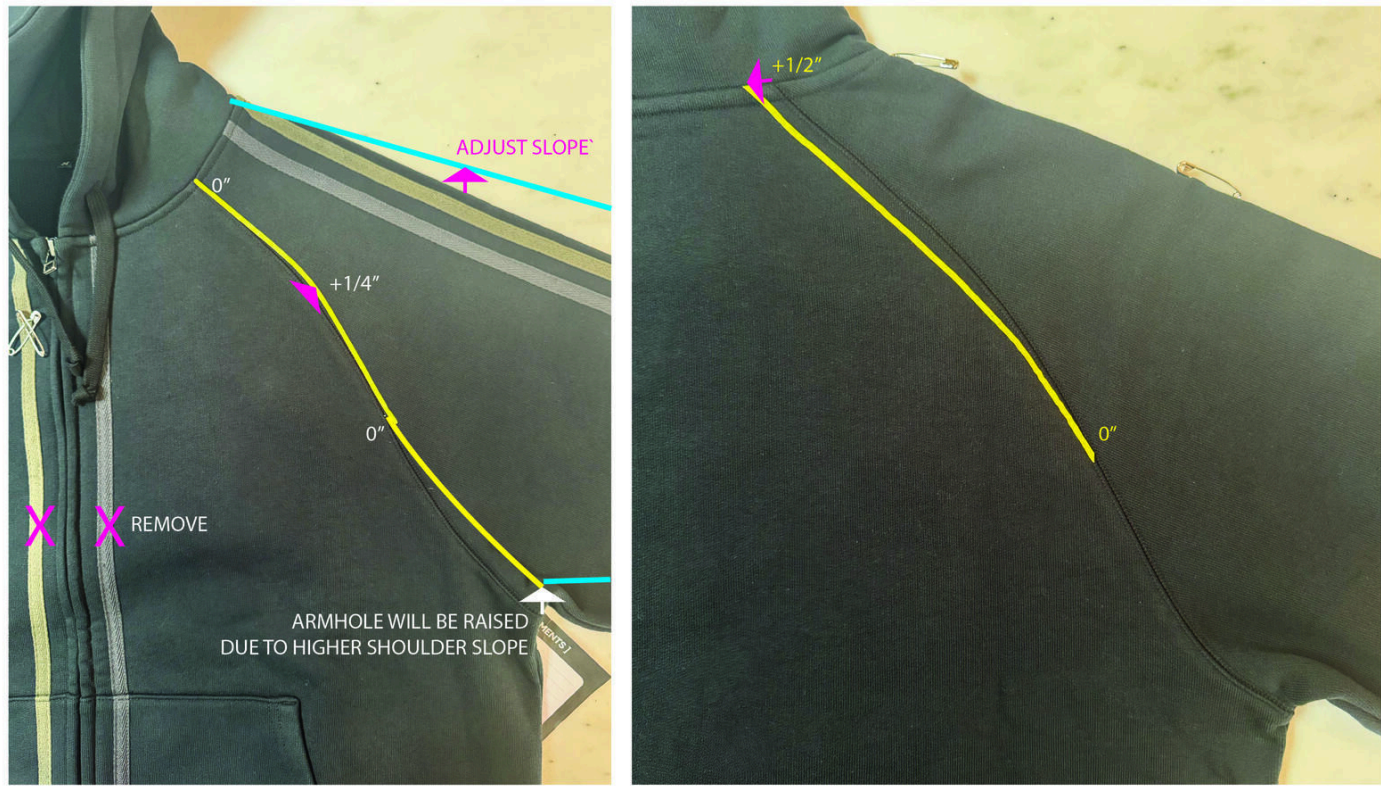


SS26TZH1420DT Chenille Embroidered Patch Zip Hoodie - 1st Proto-01.jpg



SS26TZH1420DT Chenille Embroidered Patch Zip Hoodie - 1st Proto

A RESHAPE FRONT AND BACK RAGLANS



SS26TZH1420DT Chenille Embroidered Patch Zip Hoodie - 1st Proto-02.jpg



SS26TZH1420DT Chenille Embroidered Patch Zip Hoodie - 1st Proto

B ADJUST THE HOOD

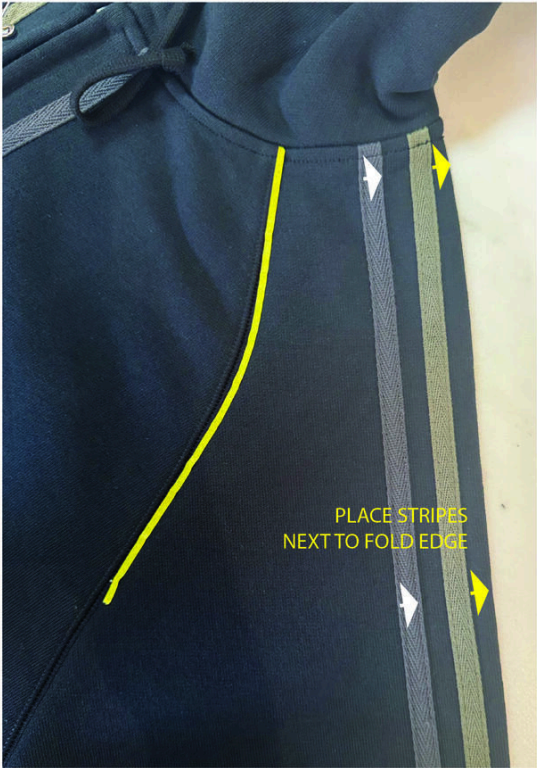


SS26TZH1420DT Chenille Embroidered Patch Zip Hoodie - 1st Proto-03.jpg



SS26TZH1420DT Chenille Embroidered Patch Zip Hoodie - 1st Proto

C CONSTRUCTION CALL-OUTS



SS26TZH1420DT Chenille Embroidered Patch Zip Hoodie - 1st Proto-05.jpg