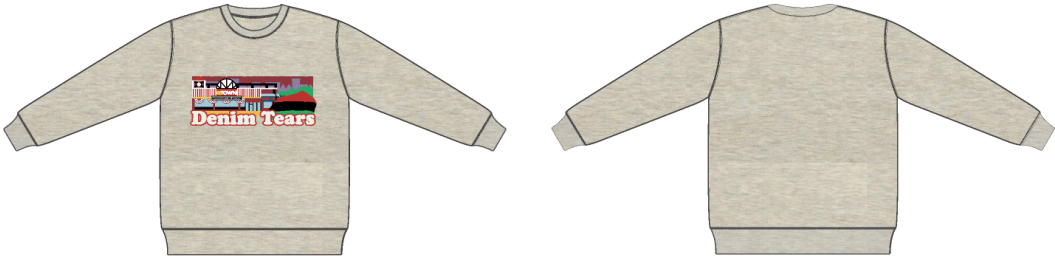




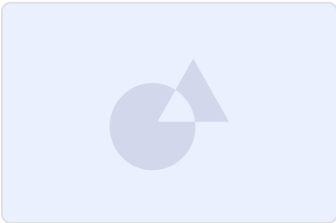
DENIM TEARS	OUTERWEAR: C003 CREWNECK	SEASON: SP26	DESIGNER: TINA
	FACTORY: FACTORY	COLLECTION: OUR LADY LIBERTY	VARIANTS: 3
SKETCH			



DENIM TEARS CONFIDENTIAL	UPDATED: XX/XX/XXXX
--------------------------	---------------------

Name	LL Tears Crewneck
Style No.	SS26TCN1240
Size Scale	<div>M</div> -Sample size <div>XS</div> <div>S</div> <div>M</div> <div>L</div> <div>XL</div> <div>XXL</div>
Created by/Author	11/18/2025 Genny Mayden genny@denimtears.com

LL Tears Crewneck

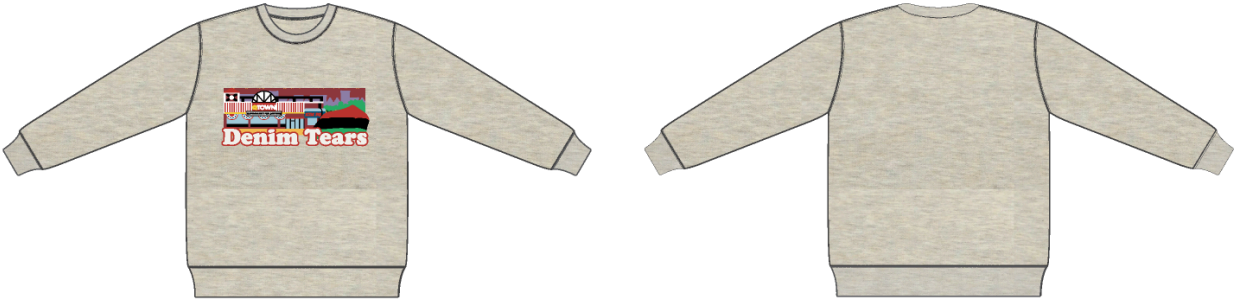


1. No Color Assigned

Style Color Code	Not Set
Carryover/New	Not Set



DENIM TEARS	OUTERWEAR: C003 CREWNECK	SEASON: SP26	DESIGNER: TINA
	FACTORY: FACTORY	COLLECTION: OUR LADY LIBERTY	VARIANTS: 3
SKETCH			



DENIM TEARS CONFIDENTIAL	UPDATED: XX/XX/XXXX
--------------------------	---------------------

SP26-C003_Crewneck-1



TRIMS

NAME	ARTICLE #	SUPPLIER	LOCATION	COLORWAY
WOVEN LABEL RTW	EA01A4156	FACTORY	END FOLD (L/R) LABEL @ INTERIOR BACK NECK W/ EDGE STITCH TO INSTEAD BE STITCHED ALL AROUND IF GARMENT IS LINED - THREAD DTM	
INTERNAL SIZE LABEL	EA0530986	FACTORY	LOOP FOLD LABEL INSERTED UNDER RIGHT SIDE OF WOVEN LABEL	
CARE LABEL	XXXXXXXXXX	FACTORY	@ WL INTERIOR SIDE SEAM 6" ABOVE BOTTOM HEM PLACED HORIZONTALLY W/ EDGE STITCH @ LEFT EDGE - THREAD DTM	
HANGTAG	CA12A03928	FACTORY	ATTACHED W STRING + SAFETY PIN THROUGH SIZE LABEL LOOP	

TSHIRT-STANDARD-BLOCK-1



TRIMS

WOVEN LABEL

"TO BE EDGESTITCHED ALL AROUND IF GARMENT IS LINED"

INTERNAL SIZE LABEL

CONSTRUCTION

*****NOT SHOWN TO SCALE

HANG TAG

TSHIRT-STANDARD-BLOCK-2



DENIM TEARS	OUTERWEAR: C003 CREWNECK	SEASON: SP26	DESIGNER: TINA
	FACTORY: FACTORY	COLLECTION: OUR LADY LIBERTY	VARIANTS: 3
COLORWAYS			



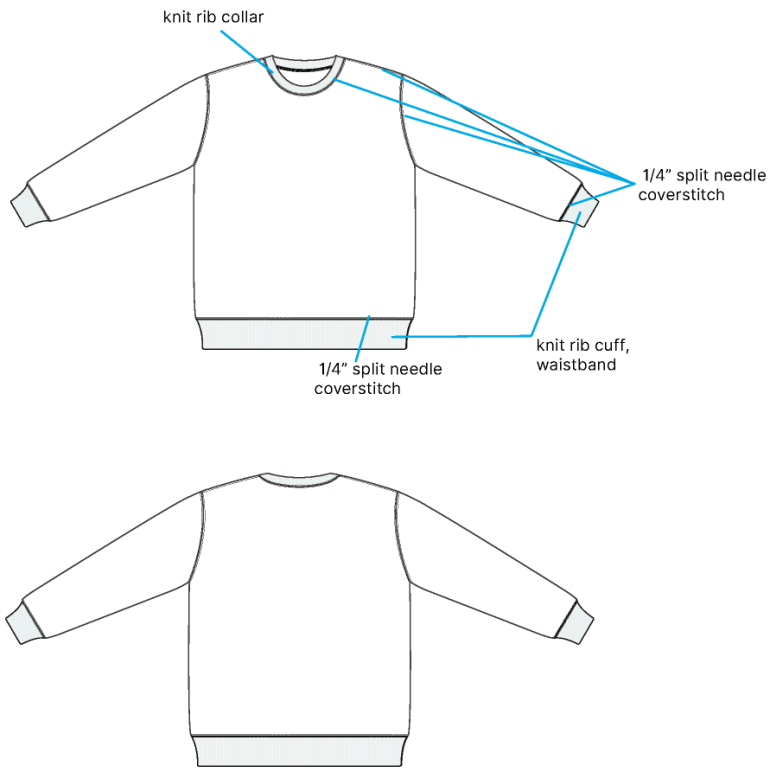
SELF: BLACK
RIBBING: BLACK
STITCH: TONAL
FABRIC: XXXX

DENIM TEARS CONFIDENTIAL	UPDATED: XX/XX/XXXX
--------------------------	---------------------

SP26-C003_Crewneck-2



DENIM TEARS	OUTERWEAR: C003 CREWNECK	SEASON: SP26	DESIGNER: TINA
	FACTORY: FACTORY	COLLECTION: OUR LADY LIBERTY	VARIANTS: 3
CONTRUCTION			



DENIM TEARS CONFIDENTIAL	UPDATED: XX/XX/XXXX
--------------------------	---------------------

SP26-C003_Crewneck-3



DENIM TEARS	OUTERWEAR: C003 CREWNECK	SEASON: SP26	DESIGNER: TINA
	FACTORY: FACTORY	COLLECTION: OUR LADY LIBERTY	VARIANTS: 3

GRAPHICS

11" WIDE, 5" TALL

ARTWORK NOT @ 100% SCALE

DENIM TEARS CONFIDENTIAL	UPDATED: XX/XX/XXXX
--------------------------	---------------------

SP26-C003_Crewneck-4



DENIM TEARS	OUTERWEAR: C003 CREWNECK	SEASON: SP26	DESIGNER: TINA
	FACTORY: FACTORY	COLLECTION: OUR LADY LIBERTY	VARIANTS: 3
COLORWAYS			

- 19-6050 TCX
- 13-0757 TCX
- 18-1549 TCX
- 17-3615 TCX
- 19-1543 TCX
- 18-4231 TCX
- 13-4411 TCX
- 11-0602 TCX
- 13-0749 TCX
- 19-0303 TCX
- 18-6240 TCX





Sample Size: M

POINT OF MEASURE	CODE	TOLERANCE	XS	S	M	L	XL	XXL
Body Length from CB Neck	L51T0o	1/4 in	0 in	0 in	26 1/8 in	0 in	0 in	0 in
Front Body Length from HPS	Cmnd2Q	1/4 in	0 in	0 in	27 1/2 in	0 in	0 in	0 in
Shoulder Seam Forward	xgRDFB	1/8 in	0 in	0 in	1/2 in	0 in	0 in	0 in
Shoulder Drop from HPS	wQ4qr9	1/8 in	0 in	0 in	2 1/2 in	0 in	0 in	0 in
Shoulder Width (Sm to Sm)	Rt4BS0	1/4 in	0 in	0 in	23 in	0 in	0 in	0 in
Across Front @ 6" Blw HPS	KBgWIO	1/4 in	0 in	0 in	21 1/2 in	0 in	0 in	0 in
Across Back @ 6" Blw HPS	vxCJU5	1/4 in	0 in	0 in	22 in	0 in	0 in	0 in
Chest @ 1" Blw Armhole	zuEYg1	3/8 in	0 in	0 in	25 1/4 in	0 in	0 in	0 in
Bottom Sweep @ 1" Above Cuff Seam	E40dli	3/8 in	0 in	0 in	24 1/4 in	0 in	0 in	0 in
Bottom Sweep @ Edge	tKtZ6U	3/8 in	0 in	0 in	19 3/4 in	0 in	0 in	0 in
Cuff Height @ Sweep	lqURGW	1/8 in	0 in	0 in	2 5/8 in	0 in	0 in	0 in
Sleeve Length From CB Neck to Cuff Edge (3-Point Measurement)	A4qCGQ	3/8 in	0 in	0 in	36 in	0 in	0 in	0 in
Armhole Straight (Sm to Sm)	hkBlb8	1/4 in	0 in	0 in	10 1/2 in	0 in	0 in	0 in
Bicep @ 1" Blw Armhole	ZFbGfF	1/4 in	0 in	0 in	10 1/4 in	0 in	0 in	0 in
Elbow @ Half of Inseam (Excl Cuff)	0R4AXC	1/4 in	0 in	0 in	8 1/4 in	0 in	0 in	0 in
Sleeve Opening @ 1" Above Cuff Seam	08zjxU	1/4 in	0 in	0 in	6 1/4 in	0 in	0 in	0 in
Sleeve Opening on Edge	evuF23	1/8 in	0 in	0 in	4 1/8 in	0 in	0 in	0 in
Sleeve Cuff Height	cHRgwT	1/8 in	0 in	0 in	2 5/8 in	0 in	0 in	0 in
Neck Width @ HPS (Sm to Sm)	mKoBax	1/8 in	0 in	0 in	8 1/4 in	0 in	0 in	0 in
Front Neck Drop (HPS to CF Neck Sm)	TjF8iY	1/8 in	0 in	0 in	3 1/2 in	0 in	0 in	0 in
Back Neck Drop (HPS to CB Neck Sm)	30zyGo	1/8 in	0 in	0 in	1 3/8 in	0 in	0 in	0 in
Neck Trim Height	AqR78o	1/8 in	0 in	0 in	1 1/8 in	0 in	0 in	0 in



Measured Size: M

POINT OF MEASURE	CODE	TOLERANCE	EXPECTED	1ST PROTO - RCVD	VARIANCE	ADJUST BY +/-	REVISED SPEC	MEASUREMENT NOTES	MEASUREMENT STATUS
Body Length from CB Neck	L51T0o	1/4 in	26 1/8 in	26 5/8 in	1/2 in	0 in	26 1/8 in	Reduce -1/2"	Back To Spec
Front Body Length from HPS	Cmnd2Q	1/4 in	27 1/2 in	27 3/4 in	1/4 in	0 in	27 1/2 in	Reduce -1/4"	Back To Spec
Shoulder Seam Forward	xgRDFB	1/8 in	1/2 in	1/2 in	0 in	0 in	1/2 in		-
Shoulder Drop from HPS	wQ4qr9	1/8 in	2 1/2 in	2 1/2 in	0 in	0 in	2 1/2 in		-
Shoulder Width (Sm to Sm)	Rt4BS0	1/4 in	23 in	23 in	0 in	0 in	23 in		-
Across Front @ 6" Blw HPS	KBgWIO	1/4 in	21 1/2 in	21 5/8 in	1/8 in	0 in	21 1/2 in		-
Across Back @ 6" Blw HPS	vxCJU5	1/4 in	22 in	22 in	0 in	0 in	22 in		-
Chest @ 1" Blw Armhole	zuEYg1	3/8 in	25 1/4 in	25 1/4 in	0 in	0 in	25 1/4 in		-
Bottom Sweep @ 1" Above Cuff Seam	E40dli	3/8 in	24 1/4 in	24 in	-1/4 in	0 in	24 1/4 in		-
Bottom Sweep @ Edge	tKtZ6U	3/8 in	19 3/4 in	19 in	-3/4 in	0 in	19 3/4 in	Increase +3/4"	Back To Spec
Cuff Height @ Sweep	lqURGW	1/8 in	2 5/8 in	2 7/8 in	1/4 in	0 in	2 5/8 in	Reduce -1/4"	Back To Spec
Sleeve Length From CB Neck to Cuff Edge (3-Point Measurement)	A4qCGQ	3/8 in	36 1/2 in	36 1/2 in	0 in	-1/2 in	36 in	Reduce -1/2"	See New Value
Armhole Straight (Sm to Sm)	hkBlb8	1/4 in	10 1/2 in	10 1/2 in	0 in	0 in	10 1/2 in		-
Bicep @ 1" Blw Armhole	ZFbGfF	1/4 in	10 1/4 in	10 1/4 in	0 in	0 in	10 1/4 in		-
Elbow @ Half of Inseam (Excl Cuff)	0R4AXC	1/4 in	8 1/4 in	8 3/8 in	1/8 in	0 in	8 1/4 in		-
Sleeve Opening @ 1" Above Cuff Seam	08zjxU	1/4 in	6 1/4 in	6 1/4 in	0 in	0 in	6 1/4 in		-
Sleeve Opening on Edge	evuF23	1/8 in	4 1/8 in	4 in	-1/8 in	0 in	4 1/8 in		-
Sleeve Cuff Height	cHRgwT	1/8 in	2 5/8 in	2 3/4 in	1/8 in	0 in	2 5/8 in		-
Neck Width @ HPS (Sm to Sm)	mKoBax	1/8 in	8 3/4 in	8 1/4 in	-1/2 in	-1/2 in	8 1/4 in		Keep As Sample
Front Neck Drop (HPS to CF Neck Sm)	TjF8iY	1/8 in	3 1/2 in	3 1/2 in	0 in	0 in	3 1/2 in		-
Back Neck Drop (HPS to CB Neck Sm)	30zyGo	1/8 in	1 3/8 in	1 3/8 in	0 in	0 in	1 3/8 in		-
Neck Trim Height	AqR78o	1/8 in	1 in	1 1/8 in	1/8 in	1/8 in	1 1/8 in		Keep As Sample



Initial TP - Misha Strelnikov

CREATED ON SEP 11, 2025 5:51 PM

****Please follow provided block pattern of "STANDARD CREWNECK SWEATSHIRT"**

****Pattern has 0% shrinkage> please adjust if needed**

****All seams (except for side seam and underarm seam) are finished w/ 1/4" double needle split stitch (bottom coverstitch)**

- make sure both sides of the seams lay flat - see photo comment

****Neck: finish w/ split needle stitch around the neck > no need for back neck tape**

Thanks,



Split Needle Finish.jpg



2nd proto - Misha Strelnikov

CREATED ON NOV 18, 2025 3:17 PM

****APPROVED TO TOP W/ CORRECTIONS**

FIT/PATTERN

- 1) Body Length came slightly longer, and the back is longer than the front by 1/4"
 - please even out front and back lengths and bring both measurements back to spec - see spec page for reference
- 2) Sweep at cuff edge is missing -3/4"> bring back to spec
- 3) Reduce Cuff Height at sweep -1/4" to finish at 2 5/8"
- 4) Reduce Sleeve Length -1/2" to finish at 36"
- 5) Neck./ Trim:
 - keep neck width at 8 1/4" as per sample
 - neck trim came taller +1/8" at 1 1/8" - please keep

CONSTRUCTION/WORKMANSHIP

**Approved as per 2nd proto

**The split needle finish looks nice and flat - can be approved as a standard for all othe styles with the same finish

Thanks,

ĐƯỢC DUYỆT THEO MẪU VỚI CÁC ĐIỀU CHỈNH

FIT/PATTERN – Form/Dáng & Rập

1. Chiều dài thân áo hơi dài hơn một chút và phần sau dài hơn phần trước 1/4".
 - Vui lòng chỉnh lại chiều dài thân trước và thân sau bằng nhau và đưa cả hai về đúng thông số – tham khảo bảng thông số.
2. Độ rộng gấu tay (sweep at cuff edge) bị thiếu -3/4" → vui lòng chỉnh về đúng thông số.
3. Giảm chiều cao bo gấu tay (cuff height at sweep) -1/4" để hoàn thiện ở mức 2 5/8".
4. Giảm chiều dài tay áo -1/2" để hoàn thiện ở mức 36".
5. Cổ / Viền cổ:
 - Giữ nguyên độ rộng cổ ở 8 1/4" như mẫu.
 - Viền cổ cao hơn +1/8" (đang là 1 1/8") – vui lòng giữ nguyên.

CONSTRUCTION/WORKMANSHIP – Cấu trúc / Tay nghề

Được duyệt theo mẫu proto lần 2.

Đường may đều rõ hoàn thiện đẹp và phẳng – có thể duyệt làm tiêu chuẩn cho tất cả các kiểu có cùng cách hoàn thiện này.



SS26TCN1240 LL Tears Crewneck - 2nd proto



SS26TCN1240 LL Tears Crewneck - 2nd proto.jpg



11/10 design notes - Genny Mayden

CREATED ON NOV 18, 2025 6:46 PM

- Increase graphic size by ½"
- Drop graphic ¼"

- Tăng kích thước hình in thêm ½"
- Hạ vị trí hình in xuống ¼"