



ADG Banner Print Crewneck - Style #SS26TCN1432

Mens, Sweater, Spring/Summer, 2026

Summary  
10-29-2025

DENIM TEARS	OUTERWEAR: C003 CREWNECK	SEASON: SP26	DESIGNER: TINA
	FACTORY: FACTORY	COLLECTION: OUR LADY LIBERTY	VARIANTS: 3
SKETCH			



Name	ADG Banner Print Crewneck
Style No.	SS26TCN1432
Description	ADG Banner Foil Print Crewneck Sweater
Division	Mens
Category	Sweater
Season	Spring/Summer
Year	2026
Size Scale	M -Sample size

XS S M L XL XXL

Created by/Author	10/29/2025
	Genny Mayden
	<a href="mailto:genny@denimtears.com">genny@denimtears.com</a>

DENIM TEARS CONFIDENTIAL

UPDATED: XX/XX/XXXX

ADG Banner Print Crewneck



1. No Color Assigned

Style Color Code

Not Set

Carryover/New

Not Set



ADG Banner Print Crewneck - Style #SS26TCN1432

Mens, Sweater, Spring/Summer, 2026

Images / uncategorized

10-29-2025

DENIM TEARS	OUTERWEAR: C003 CREWNECK	SEASON: SP26	DESIGNER: TINA
	FACTORY: FACTORY	COLLECTION: OUR LADY LIBERTY	VARIANTS: 3
SKETCH			



DENIM TEARS CONFIDENTIAL	UPDATED: XX/XX/XXXX
--------------------------	---------------------

SP26-C003\_Crewneck\_10-1



ADG Banner Print Crewneck - Style #SS26TCN1432

Mens, Sweater, Spring/Summer, 2026

Images / uncategorized

10-29-2025

DENIM TEARS	OUTERWEAR: C003 CREWNECK	SEASON: SP26	DESIGNER: TINA
	FACTORY: FACTORY	COLLECTION: OUR LADY LIBERTY	VARIANTS: 3
COLORWAYS			



BLACK

SELF: BLACK  
RIBBING: BLACK  
STITCH: TONAL  
FABRIC: XXXX



NAVY

SELF: NAVY  
RIBBING: NAVY  
STITCH: TONAL  
FABRIC: XXXX

DENIM TEARS CONFIDENTIAL

UPDATED: XX/XX/XXXX

SP26-C003\_Crewneck\_10-2





TRIMS

NAME	ARTICLE #	SUPPLIER	LOCATION	COLORWAY
WOVEN LABEL RTW	EA01A4156	FACTORY	END FOLD (L/R) LABEL @ INTERIOR BACK NECK W/ EDGE STITCH TO INSTEAD BE STITCHED ALL AROUND IF GARMENT IS LINED - THREAD DTM	
INTERNAL SIZE LABEL	EA0530986	FACTORY	LOOP FOLD LABEL INSERTED UNDER RIGHT SIDE OF WOVEN LABEL	
CARE LABEL	XXXXXXXXXX	FACTORY	@ WL INTERIOR SIDE SEAM 6" ABOVE BOTTOM HEM PLACED HORIZONTALLY W/ EDGE STITCH @ LEFT EDGE - THREAD DTM	
HANGTAG	CA12A03928	FACTORY	ATTACHED W STRING + SAFETY PIN THROUGH SIZE LABEL LOOP	

TSHIRT-STANDARD-BLOCK-1



TRIMS

WOVEN LABEL

*"TO BE EDGESTITCHED ALL AROUND IF GARMENT IS LINED"*

INTERNAL SIZE LABEL

CONSTRUCTION

\*\*\*\*\*NOT SHOWN TO SCALE

HANG TAG

TSHIRT-STANDARD-BLOCK-2



DENIM TEARS	OUTERWEAR: C003 CREWNECK	SEASON: SP26	DESIGNER: TINA
	FACTORY: FACTORY	COLLECTION: OUR LADY LIBERTY	VARIANTS: 3
COLOR & QUALITY STANDARDS			

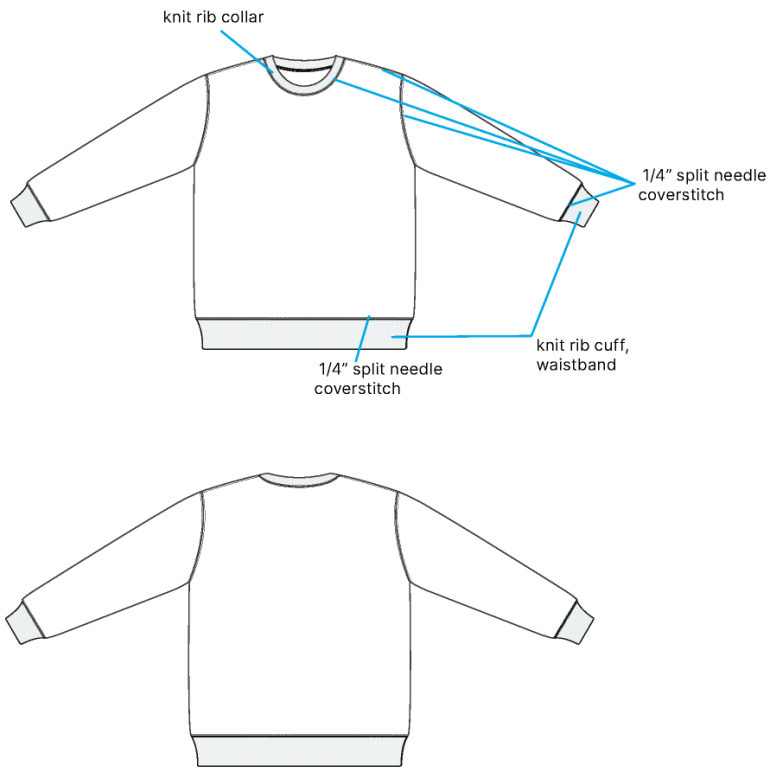
ITEM	PLACEMENT	QUANTITY	SIZE	COLORWAY 1	COLORWAY 2		
100% COTTON - XXXX	SELF A: MAIN BODY			<div>NAVY - NAVY BLAZER 19-3923.TCX</div>	<div>BLACK - JET BLACK 19-0303.TCX</div>		
2X1KNIT RIB- XXXX	SELF B: SLEEVE CUFF & HEM			<div>NAVY - NAVY BLAZER 19-3923.TCX</div>	<div>BLACK - JET BLACK 19-0303.TCX</div>		
THREAD 1:	SELF A: MAIN BODY			<div>DTM NAVY</div>	<div>DTM BLACK</div>		
WASH:	GARMENT			NO WASH	NO WASH		

DENIM TEARS CONFIDENTIAL	UPDATED: XX/XX/XXXX
--------------------------	---------------------

SP26-C003\_Crewneck\_10-4



DENIM TEARS	OUTERWEAR: C003 CREWNECK	SEASON: SP26	DESIGNER: TINA
	FACTORY: FACTORY	COLLECTION: OUR LADY LIBERTY	VARIANTS: 3
CONTRUCTION			



DENIM TEARS CONFIDENTIAL	UPDATED: XX/XX/XXXX
--------------------------	---------------------

SP26-C003\_Crewneck\_10-3



DENIM TEARS	OUTERWEAR: C003 CREWNECK	SEASON: SP26	DESIGNER: TINA
	FACTORY: FACTORY	COLLECTION: OUR LADY LIBERTY	VARIANTS: 3

GRAPHICS

38" WIDE, 32.48" TALL

ARTWORK NOT @ 100% SCALE

DENIM TEARS CONFIDENTIAL

UPDATED: XX/XX/XXXX



SP26-C003\_Crewneck\_10-5



DENIM TEARS	OUTERWEAR: C003 CREWNECK	SEASON: SP26	DESIGNER: TINA
	FACTORY: FACTORY	COLLECTION: OUR LADY LIBERTY	VARIANTS: 3
ARTWORK PLACEMENT & COLOR			

\*PLACE PRINT SIMILAR TO THIS\*



BODY	PRINT	
BLACK	BLACK FOIL	
NAVY	COPPER - PMS 8003 C	

DENIM TEARS CONFIDENTIAL	UPDATED: XX/XX/XXXX
--------------------------	---------------------

SP26-C003\_Crewneck\_10-6



DENIM TEARS	OUTERWEAR: C003 CREWNECK	SEASON: SP26	DESIGNER: TINA
	FACTORY: FACTORY	COLLECTION: OUR LADY LIBERTY	VARIANTS: 3
ARTWORK PLACEMENT REFERENCE			

**\*MATCH THIS FOR PRINT QUALITY,  
PRINT MUST BE APPLIED AFTER GARMENT CONSTRUCTION LIKE THIS, BOTH SIDES\***



SP26-C003\_Crewneck\_10-7



Sample Size: M

POINT OF MEASURE	CODE	TOLERANCE	XS	S	M	L	XL	XXL
Body Length from CB Neck	L51T0o	1/4 in	0 in	0 in	26 1/8 in	0 in	0 in	0 in
Front Body Length from HPS	Cmnd2Q	1/4 in	0 in	0 in	27 1/2 in	0 in	0 in	0 in
Shoulder Seam Forward	xgRDFB	1/8 in	0 in	0 in	1/2 in	0 in	0 in	0 in
Shoulder Drop from HPS	wQ4qr9	1/8 in	0 in	0 in	2 1/2 in	0 in	0 in	0 in
Shoulder Width (Sm to Sm)	Rt4BS0	1/4 in	0 in	0 in	23 in	0 in	0 in	0 in
Across Front @ 6" Blw HPS	KBgWIO	1/4 in	0 in	0 in	21 1/2 in	0 in	0 in	0 in
Across Back @ 6" Blw HPS	vxCJU5	1/4 in	0 in	0 in	22 in	0 in	0 in	0 in
Chest @ 1" Blw Armhole	zuEYg1	3/8 in	0 in	0 in	25 1/4 in	0 in	0 in	0 in
Bottom Sweep @ 1" Above Cuff Seam	E40dli	3/8 in	0 in	0 in	24 1/4 in	0 in	0 in	0 in
Bottom Sweep @ Edge	tKtZ6U	3/8 in	0 in	0 in	19 3/4 in	0 in	0 in	0 in
Cuff Height @ Sweep	lqURGW	1/8 in	0 in	0 in	2 5/8 in	0 in	0 in	0 in
Sleeve Length From CB Neck to Cuff Edge (3-Point Measurement)	A4qCGQ	3/8 in	0 in	0 in	36 in	0 in	0 in	0 in
Armhole Straight (Sm to Sm)	hkBlb8	1/4 in	0 in	0 in	10 1/2 in	0 in	0 in	0 in
Bicep @ 1" Blw Armhole	ZFbGfF	1/4 in	0 in	0 in	10 1/4 in	0 in	0 in	0 in
Elbow @ Half of Inseam (Excl Cuff)	0R4AXC	1/4 in	0 in	0 in	8 1/4 in	0 in	0 in	0 in
Sleeve Opening @ 1" Above Cuff Seam	08zjxU	1/4 in	0 in	0 in	6 1/4 in	0 in	0 in	0 in
Sleeve Opening on Edge	evuF23	1/8 in	0 in	0 in	4 1/8 in	0 in	0 in	0 in
Sleeve Cuff Height	cHRgwT	1/8 in	0 in	0 in	2 5/8 in	0 in	0 in	0 in
Neck Width @ HPS (Sm to Sm)	mKoBax	1/8 in	0 in	0 in	8 1/4 in	0 in	0 in	0 in
Front Neck Drop (HPS to CF Neck Sm)	TjF8iY	1/8 in	0 in	0 in	3 1/2 in	0 in	0 in	0 in
Back Neck Drop (HPS to CB Neck Sm)	30zyGo	1/8 in	0 in	0 in	1 3/8 in	0 in	0 in	0 in
Neck Trim Height	AqR78o	1/8 in	0 in	0 in	1 1/8 in	0 in	0 in	0 in





**Measured Size: M**

POINT OF MEASURE	CODE	TOLERANCE	EXPECTED	2ND PROTO - RCVD	VARIANCE	ADJUST BY +/-	REVISED SPEC	MEASUREMENT NOTES	MEASUREMENT STATUS
Body Length from CB Neck	L51T0o	1/4 in	26 1/8 in	26 1/8 in	0 in	0 in	26 1/8 in		-
Front Body Length from HPS	Cmnd2Q	1/4 in	27 1/2 in	27 1/2 in	0 in	0 in	27 1/2 in		-
Shoulder Seam Forward	xgRDFB	1/8 in	1/2 in	1/2 in	0 in	0 in	1/2 in		-
Shoulder Drop from HPS	wQ4qr9	1/8 in	2 1/2 in	2 1/2 in	0 in	0 in	2 1/2 in		-
Shoulder Width (Sm to Sm)	Rt4BS0	1/4 in	23 in	23 in	0 in	0 in	23 in	pointy shoulder	-
Across Front @ 6" Blw HPS	KBgWIO	1/4 in	21 1/2 in	21 5/8 in	1/8 in	0 in	21 1/2 in		-
Across Back @ 6" Blw HPS	vxCJU5	1/4 in	22 in	0 in	0 in	0 in	22 in		-
Chest @ 1" Blw Armhole	zuEYg1	3/8 in	25 1/4 in	25 1/8 in	-1/8 in	0 in	25 1/4 in		-
Bottom Sweep @ 1" Above Cuff Seam	E40dli	3/8 in	24 1/4 in	24 1/8 in	-1/8 in	0 in	24 1/4 in		-
Bottom Sweep @ Edge	tKtZ6U	3/8 in	19 3/4 in	19 in	-3/4 in	0 in	19 3/4 in		Back To Spec
Cuff Height @ Sweep	lqURGW	1/8 in	2 5/8 in	2 5/8 in	0 in	0 in	2 5/8 in		-
Sleeve Length From CB Neck to Cuff Edge (3-Point Measurement)	A4qCGQ	3/8 in	36 1/2 in	36 1/2 in	0 in	-1/2 in	36 in	Reduce -1/2"	See New Value
Armhole Straight (Sm to Sm)	hkBlb8	1/4 in	10 1/2 in	10 1/2 in	0 in	0 in	10 1/2 in		-
Bicep @ 1" Blw Armhole	ZFbGfF	1/4 in	10 1/4 in	10 1/4 in	0 in	0 in	10 1/4 in		-
Elbow @ Half of Inseam (Excl Cuff)	0R4AXC	1/4 in	8 1/4 in	8 1/4 in	0 in	0 in	8 1/4 in		-
Sleeve Opening @ 1" Above Cuff Seam	08zjxU	1/4 in	6 1/4 in	6 3/8 in	1/8 in	0 in	6 1/4 in		-
Sleeve Opening on Edge	evuF23	1/8 in	4 1/8 in	4 in	-1/8 in	0 in	4 1/8 in		-
Sleeve Cuff Height	cHRgwT	1/8 in	2 5/8 in	2 5/8 in	0 in	0 in	2 5/8 in		-
Neck Width @ HPS (Sm to Sm)	mKoBax	1/8 in	8 3/4 in	8 1/4 in	-1/2 in	-1/2 in	8 1/4 in		Keep As Sample
Front Neck Drop (HPS to CF Neck Sm)	TjF8iY	1/8 in	3 1/2 in	3 1/2 in	0 in	0 in	3 1/2 in		-
Back Neck Drop (HPS to CB Neck Sm)	30zyGo	1/8 in	1 3/8 in	1 3/8 in	0 in	0 in	1 3/8 in		-
Neck Trim Height	AqR78o	1/8 in	1 in	1 in	0 in	1/8 in	1 1/8 in	Increase +1/8"	See New Value



## 9/5 design notes - Genny Mayden

CREATED ON SEP 8, 2025 5:09 PM

- STRIKEOFFS:
  - make the gold in gold foil, not print. Needs to be shiny
  - make the black in mono - black with black foil



## Fitting 9.5.25 - Freelance Account

CREATED ON SEP 15, 2025 8:59 PM

### **FIT/PATTERN**

**\*\*Follow the provided reference block pattern \*\*PULLOVER HOODIE"**

**\*\*Remove the hood and revise to Crew Neck> see spec page for the neck target specs**

**\*\*Neck trim - rib on fold**

### **CONSTRUCTION/WORKMANSHIP**

**\*\*Finish with 1/4" split needle top stitch (Bottom Coverstitch):**

- front/back neck> no need for tape at back neck
- shoulder seams
- armhole seams
- cuff seams at sleeve and bottom opening

**\*\*Please keep each side of the seam with the split needle topstitch flat without bumps - see image for the finish reference**

Thanks,



Split Needle Finish.jpg



## Fitting 10.23.25 - Freelance Account

CREATED ON OCT 27, 2025 8:48 PM

### **\*\*PPS MUST BE ON SPEC**

#### **FIT/PATTERN**

- 1) Body length is good
- 2) Body width:
  - bottom opening at cuff is tight and is missing -3/4"> please get back to spec
- 3) Reduce Sleeve Length -1/2" to finish at 36"
- 4) Neck/ Neck trim:
  - neck width came narrower -1/2" - OK to keep> target spec was updated to match the sample
  - increase neck trim height +1/8" to finish at 1 1/8"

#### **CONSTRUCTION/WORKMANSHIP**

- 1) the intersection at Shoulder Seam and Armhole is too pointy - see photo comments> please avoid
- 2) Avoid stretching seams when finishing with the split needle> all seams should lay flat without any waviness

FIT/PATTERN (Form/Dáng & Rập)

- Thanks,
- Chiều dài áo đạt yêu cầu.
  - Chiều rộng áo:
    - Phần bo lai bị chặt và thiếu 3/4" → vui lòng điều chỉnh lại đúng theo thông số.
  - Giảm chiều dài tay áo đi 1/2" → hoàn thiện ở mức 36".
  - Cổ áo/ Bo cổ:
    - Độ rộng cổ bị hẹp hơn 1/2" → có thể giữ nguyên, thông số chuẩn đã được cập nhật để khớp với mẫu.
    - Tăng chiều cao bo cổ thêm +1/8" → hoàn thiện ở mức 1 1/8".

CONSTRUCTION/WORKMANSHIP (Cấu trúc & Tay nghề may)

Giao điểm giữa đường may vai và vòng nách bị nhọn quá → xem thêm phần nhận xét trong hình ảnh, vui lòng điều chỉnh lại.





**SS26TCN1432 ADG Banner Print Crewneck - 2nd proto**



**SS26TCN1432 ADG Banner Print Crewneck - 2nd proto-01.jpg**



**SS26TCN1432 ADG Banner Print Crewneck - 2nd proto**



GẤY TẠI VAI - VUI LÒNG ĐIỀU CHỈNH

AVOID POINTINESS

SS26TCN1432 ADG Banner Print Crewneck - 2nd proto-02.jpg



10/23 design notes - Genny Mayden

CREATED ON OCT 29, 2025 6:55 PM

- make print all over - front and back  
IN FULL THÂN TRƯỚC + THÂN SAU