

DENIM TEARS	TOPS: OXIDIZED COTTON WREATH THERMASEASON: SP26	DESIGNER: TINA
	FACTORY: FACTORY	COLLECTION: OUR LADY LIBERTY VARIANTS: 3
SKETCH		

metallic black print

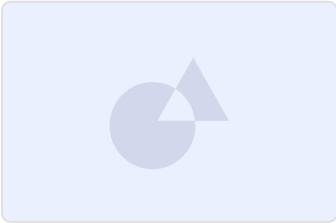


Name	Oxidized Cotton Wreath Thermal
Style No.	SS26TKT1518
Description	Oxidized Cotton Wreath Thermal
Division	Mens
Category	Thermal
Season	Spring/Summer
Year	2026
Size Scale	<div>M</div> -Sample size
	<div>XS</div> <div>S</div> <div>M</div> <div>L</div> <div>XL</div> <div>XXL</div>
Factory	Un-Available
Created by/Author	12/2/2025
	Genny Mayden
	genny@denimtears.com

DENIM TEARS CONFIDENTIAL

UPDATED: XX/XX/XXXX

Oxidized Cotton Wreath Thermal



1. No Color Assigned

Style Color Code	Not Set
Carryover/New	Not Set

DENIM TEARS	TOPS: OXIDIZED COTTON WREATH THERM	ABEASON: SP26	DESIGNER: TINA
	FACTORY: FACTORY	COLLECTION: OUR LADY LIBERTY	VARIANTS: 3
SKETCH			

metallic black print



DENIM TEARS CONFIDENTIAL

UPDATED: XX/XX/XXXX

SS26-THERMAL UPDATE-1


TRIMS

NAME	ARTICLE #	SUPPLIER	LOCATION	COLORWAY
WOVEN LABEL RTW	EA01A4156	FACTORY	END FOLD (L/R) LABEL @ INTERIOR BACK NECK W/ EDGE STITCH TO INSTEAD BE STITCHED ALL AROUND IF GARMENT IS LINED - THREAD DTM	
INTERNAL SIZE LABEL	EA0530986	FACTORY	LOOP FOLD LABEL INSERTED UNDER RIGHT SIDE OF WOVEN LABEL	
CARE LABEL	XXXXXXXXXX	FACTORY	@ WL INTERIOR SIDE SEAM 6" ABOVE BOTTOM HEM PLACED HORIZONTALLY W/ EDGE STITCH @ LEFT EDGE - THREAD DTM	
HANGTAG	CA12A03928	FACTORY	ATTACHED W STRING + SAFETY PIN THROUGH SIZE LABEL LOOP	

THERMAL-TRIMS-BLOCK-1

TRIMS

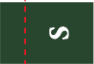
WOVEN LABEL




*****NOT SHOWN TO SCALE

"TO BE EDGESTITCHED ALL AROUND IF GARMENT IS LINED"


INTERNAL SIZE LABEL



CONSTRUCTION



HANG TAG



THERMAL-TRIMS-BLOCK-2

DENIM TEARS	TOPS: OXIDIZED COTTON WREATH THERM	ABEASON: SP26	DESIGNER: TINA
	FACTORY: FACTORY	COLLECTION: OUR LADY LIBERTY	VARIANTS: 3
COLORWAYS			

BLACK

SELF: BLACK
RIBBING: BLACK
STITCH: TONAL

metallic black print

TAN

SELF: TAN
RIBBING: TAN
STITCH: TONAL

BLACK PRINT

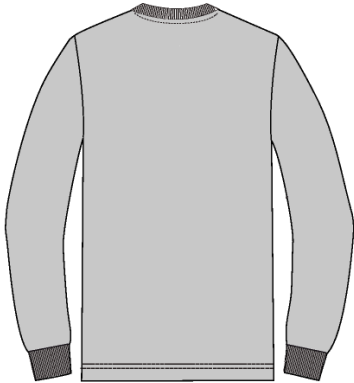
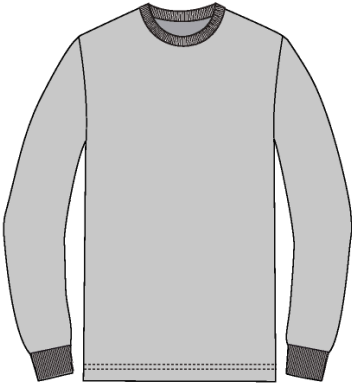
LT TEAL

SELF: LT TEAL
RIBBING: LT TEAL
STITCH: TONAL

BLACK PRINT

DENIM TEARS	TOPS: OXIDIZED COTTON WREATH THERM	ABEASON: SP26	DESIGNER: TINA
	FACTORY: FACTORY	COLLECTION: OUR LADY LIBERTY	VARIANTS: 3
CONTRUCTION			

PLEASE MATCH FIT/CONSTRUCTION
TO FW24 "C.R.E.A.M. THERMAL:



DENIM TEARS CONFIDENTIAL	UPDATED: XX/XX/XXXX
--------------------------	---------------------

SS26-THERMAL UPDATE-3

DENIM TEARS	TOPS: OXIDIZED COTTON WREATH THERMAL	BASE: SP26	DESIGNER: TINA
	FACTORY: FACTORY	COLLECTION: OUR LADY LIBERTY	VARIANTS: 3
COLOR & QUALITY STANDARDS			

ITEM	PLACEMENT	QUANTITY	SIZE	COLORWAY 1	COLORWAY 2	COLORWAY 3	
100% COTTON - XXXX	SELF: MAIN BODY			<div>LT TEAL - DUSTY JADE GREEN 15-5711 TCX</div>	<div>BLACK - JET BLACK 19-0303 TCX</div>	<div>LT TAN - SEEDPEARL 12-0703 TCX</div>	
2X1KNIT RIB- XXXX	SELF B: SLEEVE CUFF & NECK			<div>LT TEAL - DUSTY JADE GREEN 15-5711 TCX</div>	<div>BLACK - JET BLACK 19-0303 TCX</div>	<div>LT TAN - SEEDPEARL 12-0703 TCX</div>	
THREAD 1:	SELF: MAIN BODY			<div>LT TEAL - DUSTY JADE GREEN 15-5711 TCX</div>	<div>LT TEAL - DUSTY JADE GREEN 15-5711 TCX</div>	<div>LT TAN - SEEDPEARL 12-0703 TCX</div>	
WASH:	GARMENT			<div>45 MIN ENZYME WASH & SOFTENER</div>	<div>45 MIN ENZYME WASH & SOFTENER</div>	<div>45 MIN ENZYME WASH & SOFTENER</div>	

DENIM TEARS CONFIDENTIAL	UPDATED: XX/XX/XXXX
--------------------------	---------------------

SS26-THERMAL UPDATE-4

DENIM TEARS	TOPS: OXIDIZED COTTON WREATH THERM	ABEASON: SP26	DESIGNER: TINA
	FACTORY: FACTORY	COLLECTION: OUR LADY LIBERTY	VARIANTS: 3

GRAPHICS

11.5



68

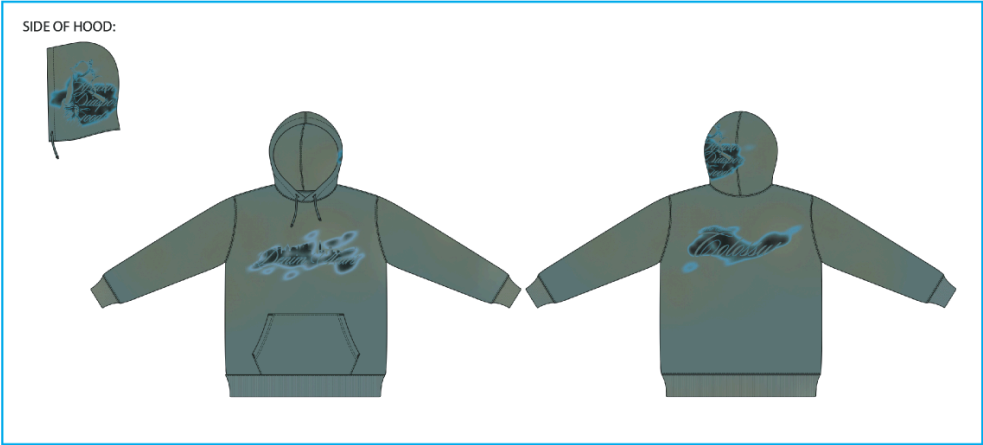
DENIM TEARS CONFIDENTIAL

UPDATED: XX/XX/XXXX

SS26-THERMAL UPDATE-5

DENIM TEARS	TOPS: OXIDIZED COTTON WREATH THERMAL	SEASON: SP26	DESIGNER: TINA
	FACTORY: FACTORY	COLLECTION: OUR LADY LIBERTY	VARIANTS: 3
GRAPHICS			

SAME SPRAY DYE COLOR & PLACEMENT AS SP-26 H003 HOODIE FOR LT TEAL



DENIM TEARS	TOPS: OXIDIZED COTTON WREATH THERM	ABEASON: SP26	DESIGNER: TINA
	FACTORY: FACTORY	COLLECTION: OUR LADY LIBERTY	VARIANTS: 3
ARTWORK PLACEMENT			



Screen Print inhouse

Sample Size: M

POINT OF MEASURE	CODE	TOLERANCE	XS	S	M	L	XL	XXL
Back Body Length from CB Neck Seam	Pat8dp	1/4 in	0 in	0 in	27 1/2 in	0 in	0 in	0 in
Shoulder Seam Forward	xgRDFB	1/8 in	0 in	0 in	1/2 in	0 in	0 in	0 in
Shoulder Drop from HPS	03dOTi	1/8 in	0 in	0 in	2 1/4 in	0 in	0 in	0 in
Shoulder Width (Sm to Sm)	Rt4BS0	1/4 in	0 in	0 in	18 1/2 in	0 in	0 in	0 in
Across Front @ 6" Blw HPS	KBgWIO	1/4 in	0 in	0 in	16 1/2 in	0 in	0 in	0 in
Across Back @ 6" Blw HPS	vxCJU5	1/4 in	0 in	0 in	17 in	0 in	0 in	0 in
Chest @ 1" Blw Armhole	zuEYg1	3/8 in	0 in	0 in	21 1/2 in	0 in	0 in	0 in
Bottom Sweep @ Edge	tKtZ6U	3/8 in	0 in	0 in	21 in	0 in	0 in	0 in
Turnback Height @ Sweep	LEiFO7	1/8 in	0 in	0 in	7/8 in	0 in	0 in	0 in
Sleeve Length From CB Neck to Cuff Edge (3-Point Measurement)	A4qCGQ	3/8 in	0 in	0 in	35 1/2 in	0 in	0 in	0 in
Armhole Straight (Sm to Sm)	hkBlb8	1/4 in	0 in	0 in	9 3/4 in	0 in	0 in	0 in
Bicep @ 1" Blw Armhole	ZFbGfF	1/4 in	0 in	0 in	8 1/2 in	0 in	0 in	0 in
Elbow @ Half of Inseam	0R4AXC	1/4 in	0 in	0 in	6 5/8 in	0 in	0 in	0 in
Sleeve Width @ 1" Above Cuff	Bh7SGr	1/8 in	0 in	0 in	5 in	0 in	0 in	0 in
Sleeve Opening on Cuff Edge	evuF23	1/8 in	0 in	0 in	4 in	0 in	0 in	0 in
Sleeve Cuff Height	DPEe3X	1/8 in	0 in	0 in	2 5/8 in	0 in	0 in	0 in
Neck Width @ HPS (Sm to Sm)	mKoBax	1/8 in	0 in	0 in	7 3/4 in	0 in	0 in	0 in
Front Neck Drop (HPS to CF Neck Sm)	TjF8iY	1/8 in	0 in	0 in	4 in	0 in	0 in	0 in
Back Neck Drop (HPS to CB Neck Sm)	30zyGo	1/8 in	0 in	0 in	1 in	0 in	0 in	0 in
Neck Trim Height	AqR78o	1/8 in	0 in	0 in	7/8 in	0 in	0 in	0 in

Measured Size: M

POINT OF MEASURE	CODE	TOLERANCE	EXPECTED	1ST PROTO - RCVD	VARIANCE	ADJUST BY +/-	REVISED SPEC	MEASUREMENT NOTES	MEASUREMENT STATUS
Back Body Length from CB Neck Seam	Pat8dp	1/4 in	27 1/2 in	27 3/4 in	1/4 in	0 in	27 1/2 in	Reduce -1"	See New Value
Shoulder Seam Forward	xgRDFB	1/8 in	-1/4 in	-1/4 in	0 in	3/4 in	1/2 in	Shift forward	See New Value
Shoulder Drop from HPS	03dOTi	1/8 in	2 1/4 in	2 in	-1/4 in	0 in	2 1/4 in		Keep As Sample
Shoulder Width (Sm to Sm)	Rt4BS0	1/4 in	19 1/2 in	19 1/2 in	0 in	-1 in	18 1/2 in	Reduce -1"	See New Value
Across Front @ 6" Blw HPS	KBgWIO	1/4 in	17 1/2 in	17 1/2 in	0 in	-1 in	16 1/2 in	Reduce -1"	See New Value
Across Back @ 6" Blw HPS	vxCJU5	1/4 in	17 1/2 in	18 in	1/2 in	-1/2 in	17 in	Reduce -1"	See New Value
Chest @ 1" Blw Armhole	zuEYg1	3/8 in	21 1/2 in	21 3/4 in	1/4 in	0 in	21 1/2 in		Back To Spec
Bottom Sweep @ Edge	tKtZ6U	3/8 in	21 in	21 1/4 in	1/4 in	0 in	21 in		Back To Spec
Turnback Height @ Sweep	LEIF07	1/8 in	7/8 in	7/8 in	0 in	0 in	7/8 in		-
Sleeve Length From CB Neck to Cuff Edge (3-Point Measurement)	A4qCGQ	3/8 in	36 1/2 in	37 1/2 in	1 in	-1 in	35 1/2 in	RVSD	See New Value
Armhole Straight (Sm to Sm)	hkBlb8	1/4 in	9 1/2 in	9 3/4 in	1/4 in	1/4 in	9 3/4 in	Approx	See New Value
Bicep @ 1" Blw Armhole	ZFbGFf	1/4 in	8 3/4 in	9 in	1/4 in	-1/4 in	8 1/2 in	Reduce -1/2"	See New Value
Elbow @ Half of Inseam	0R4AXC	1/4 in	6 3/4 in	7 in	1/4 in	-1/8 in	6 5/8 in	Reduce -3/8"	See New Value
Sleeve Width @ 1" Above Cuff	Bh7SGr	1/8 in	5 in	4 3/4 in	-1/4 in	0 in	5 in	Increase +1/4"	Back To Spec
Sleeve Opening on Cuff Edge	evuF23	1/8 in	4 in	4 1/8 in	1/8 in	0 in	4 in		-
Sleeve Cuff Height	DPEe3X	1/8 in	2 5/8 in	0 in	0 in	0 in	2 5/8 in		-
Neck Width @ HPS (Sm to Sm)	mKoBax	1/8 in	8 3/4 in	8 1/4 in	-1/2 in	-1 in	7 3/4 in	Reduce -1/2"	See New Value
Front Neck Drop (HPS to CF Neck Sm)	TjF8iY	1/8 in	4 1/4 in	4 1/4 in	0 in	-1/4 in	4 in	Raise by 1/4"	See New Value
Back Neck Drop (HPS to CB Neck Sm)	30zyGo	1/8 in	1 in	1 in	0 in	0 in	1 in		-
Neck Trim Height	AqR78o	1/8 in	3/4 in	3/4 in	0 in	1/8 in	7/8 in	Increase +1/8"	See New Value



Fitting 12.2.25 - Misha Strelnikov

CREATED ON DEC 2, 2025 6:51 PM

STATUS: SUBMIT PPS

**Adjust the shrinkage on patterns depending on the approved treatment> PP must be on spec

FIT

- 1) Reduce body Length -1"
- 2) Upper body fits like Large - see photo comments:
 - reduce shoulder width + across front + across back -1"> follow new target specs
 - reduce chest and sweep -1/4" to meet target specs
- 3) Shift Shoulder Seam forward to finish at 1/2"
- 4) Armhole/ Sleeve - see photo comments:
 - adjust armhole to approx 9 3/4" (straight measure)
 - reduce bicep -1/2"
 - reduce elbow +1/4"
 - increase sleeve width above cuff top stitching +1/4" to meet target spec at 5"
- 5) Neck/ Trim:
 - reduce neck width -1/2" from the sample spec to finish at 6 3/4"
 - raise front neck drop by 1/4" to finish at 4" from HPS
 - keep back neck as is
 - increase neck trim width +1/8" to finish at 7/8"> it need to look thicker

CONSTRUCTION

- 1) Due to heavier fabric, all seams are very thick> can FTY revise to lapped seams construction finished with flatlock?
 - see photo comments for reference
- 2) Remove back half moon facing
- 3) Finish neck seam at front and back with 1/4" split needle top stitch> no need for back neck tape

Thanks,
Misha

TÌNH TRẠNG: GỬI PPS

Lưu ý: Điều chỉnh độ co rút trên rập dựa theo xử lý được duyệt → PP phải đúng thông số

FIT (Phom dáng)

1. Giảm dài áo -1"
2. Phần thân trên trông như size lớn – xem nhận xét trên hình:
 - Giảm rộng vai + rộng thân trước + rộng thân sau -1" → theo thông số mới
 - Giảm ngực và lai -1/4" để đạt như bts
3. Dời chõm vai về phía trước để kết thúc tại 1/2"
4. Nách / Tay áo – xem nhận xét trên hình:
 - Điều chỉnh nách khoảng 9 3/4" (đo thẳng)
 - Giảm bấp tay -1/2"
 - Giảm khủy tay -1/4"
 - Tăng rộng tay phía trên đường tra lai tay +1/4" để đạt target tại 5"
5. Cổ / Trim:
 - Giảm chiều rộng cổ -1/2" từ mẫu để hoàn thiện tại 6 3/4"
 - Nâng cổ sau lên +1/4" để kết thúc tại 4" từ đỉnh vai
 - Giữ nguyên cổ sau như mẫu
 - Tăng to bản cổ +1/8" để hoàn thiện tại 7/8" → cần nhìn dày hơn

CONSTRUCTION (Cấu trúc may)

1. Do vải dày hơn, tất cả đường may đều rất dày → nhà máy có thể chỉnh sang lapped seams hoàn thiện bằng flatlock không? như hình minh họa bên dưới

2. Bỏ mặt nguyệt phía sau

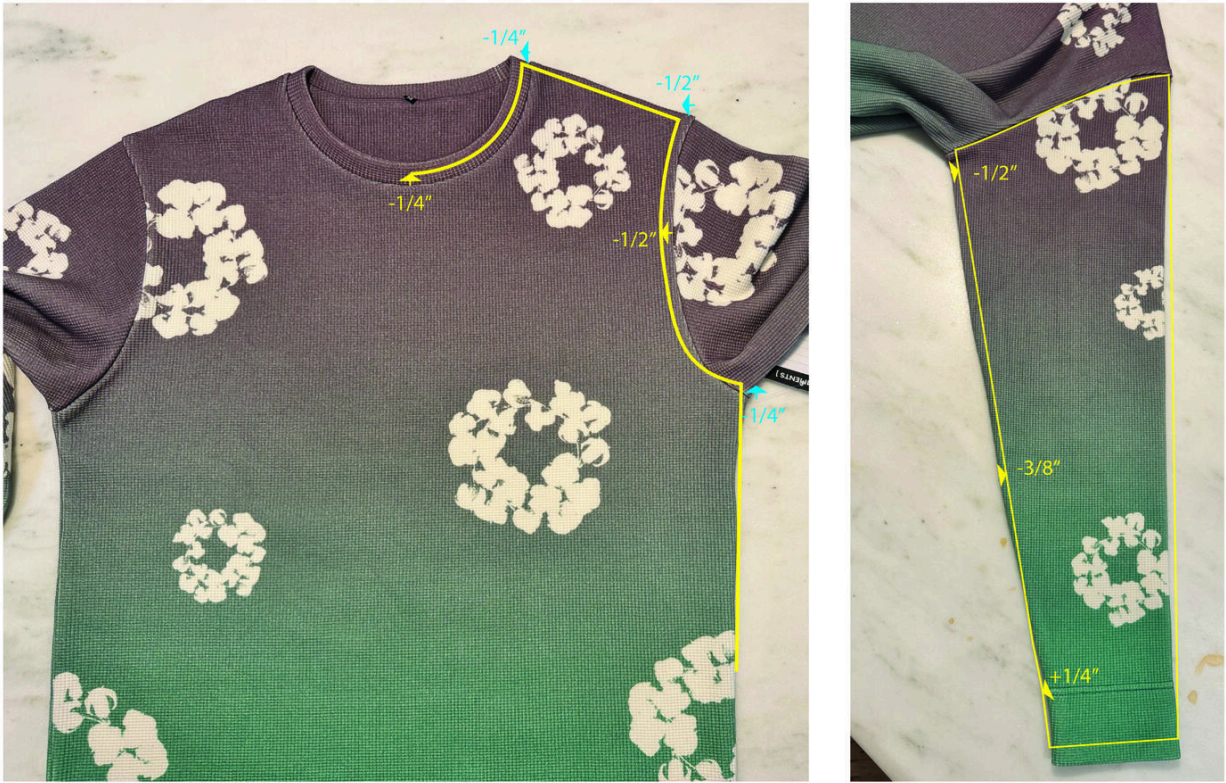
3. Hoàn thiện viền cổ trước và cổ sau bằng đường may điều 2 kim 1/4" → không cần viền cổ sau

SS26TKT1518 Oxidized Cotton Wreath Thermal - 1st proto



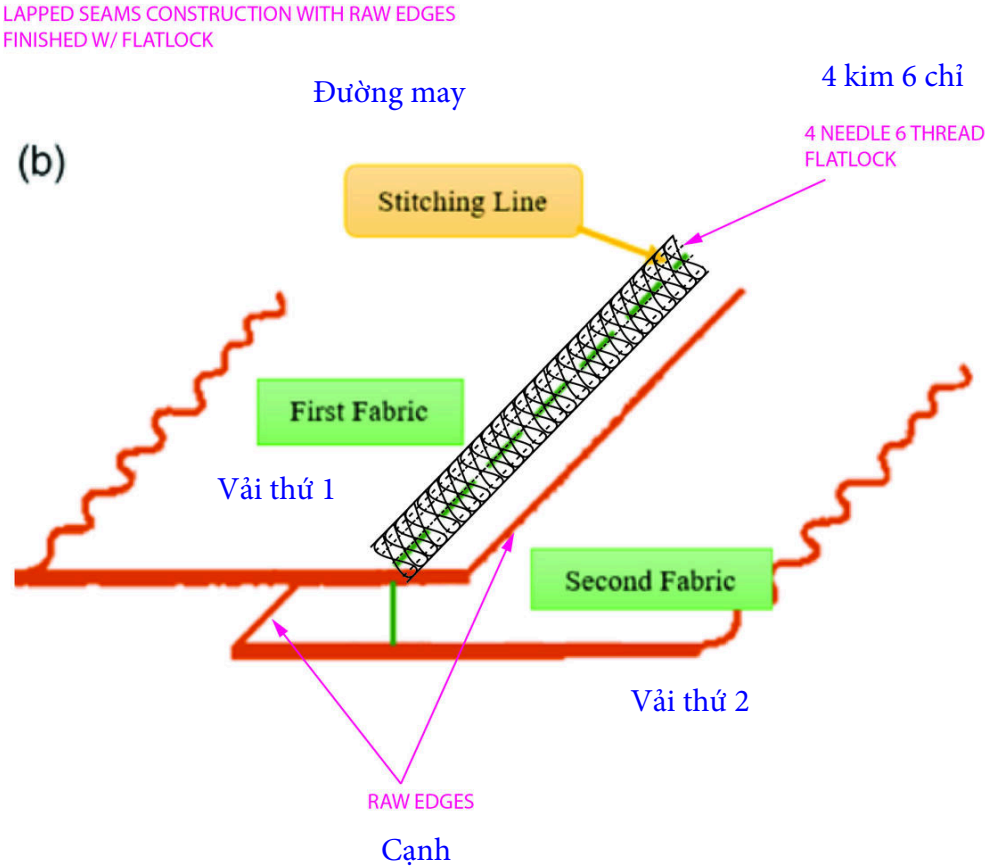
SS26TKT1518 Oxidized Cotton Wreath Thermal - 1st proto-01.jpg

SS26TKT1518 Oxidized Cotton Wreath Thermal - 1st proto



SS26TKT1518 Oxidized Cotton Wreath Thermal - 1st proto-02.jpg

SS26TKT1518 Oxidized Cotton Wreath Thermal - 1st proto



SS26TKT1518 Oxidized Cotton Wreath Thermal - 1st proto-03.jpg