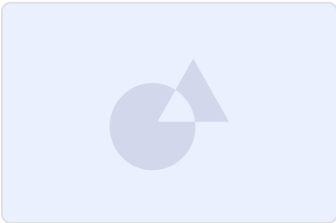




Name	Jacquard City SS Tee
Style No.	SS26TSS1616
Size Scale	<div>M</div> -Sample size
	<div>XS</div> <div>S</div> <div>M</div> <div>L</div> <div>XL</div> <div>XXL</div>
Factory	Un-Available
Created by/Author	12/1/2025 Misha Strelnikov misha.strelnikov@denimtears.com

Jacquard City SS Tee



1. No Color Assigned

Style Color Code	Not Set
Carryover/New	Not Set



SKETCH



DENIM TEARS CONFIDENTIAL

UPDATED: 08/09/2025

1_SKETCH-1



TRIMS

NAME	ARTICLE #	SUPPLIER	LOCATION	COLORWAY
WOVEN LABEL RTW	EA01A4156	FACTORY	END FOLD (L/R) LABEL @ INTERIOR BACK NECK W/ EDGE STITCH TO INSTEAD BE STITCHED ALL AROUND IF GARMENT IS LINED - THREAD DTM	
INTERNAL SIZE LABEL	EA0530986	FACTORY	LOOP FOLD LABEL INSERTED UNDER RIGHT SIDE OF WOVEN LABEL	
CARE LABEL	XXXXXXXXXX	FACTORY	@ WL INTERIOR SIDE SEAM 6" ABOVE BOTTOM HEM PLACED HORIZONTALLY W/ EDGE STITCH @ LEFT EDGE - THREAD DTM	
HANGTAG	CA12A03928	FACTORY	ATTACHED W STRING + SAFETY PIN THROUGH SIZE LABEL LOOP	

TSHIRT-STANDARD-BLOCK-1



TRIMS

WOVEN LABEL

"TO BE EDGESTITCHED ALL AROUND IF GARMENT IS LINED"

INTERNAL SIZE LABEL

CONSTRUCTION


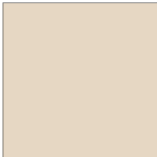
*****NOT SHOWN TO SCALE

HANG TAG

TSHIRT-STANDARD-BLOCK-2

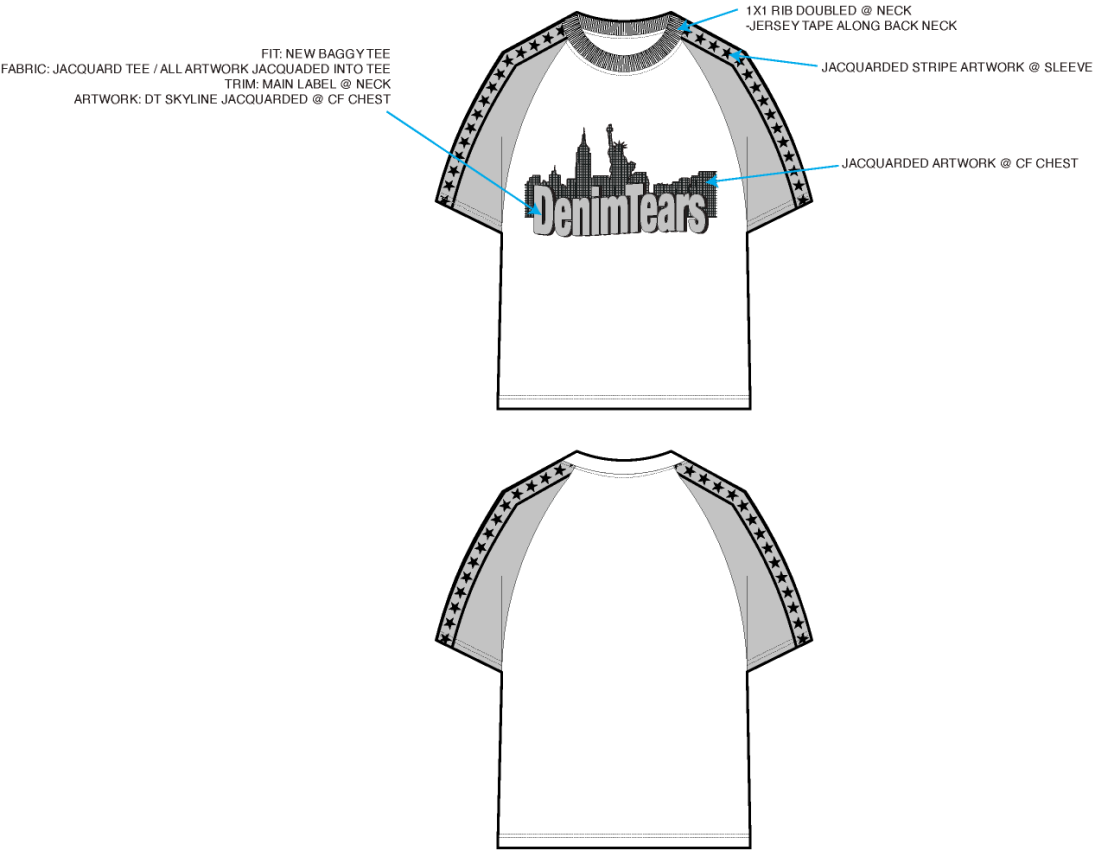


COLORWAYS

COLORWAY(S)	PANTONE
	CHINESE RED 18-1663 TCX (BODY)
	SEEDPEARL 12-0703 TCX (SLEEVES)



CONSTRUCTION DETAILS



DENIM TEARS CONFIDENTIAL

UPDATED: 08/09/2025

3_CONSTRUCTION DETAILS-1



ARTWORK REFERENCE

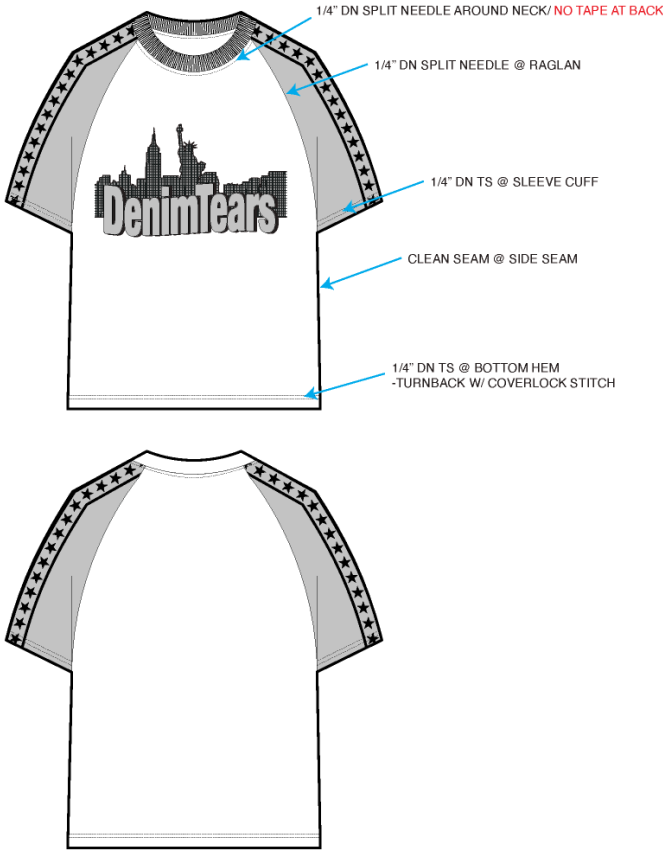
PLEASE FOLLOW BELOW FOR JACQUARDED ARTWORK EXECUTION



7_JACQUARD EXECUTION REFERENCE-1



STITCHING DETAILS



DENIM TEARS CONFIDENTIAL

UPDATED: 08/09/2025

4_STITCHING DETAILS-1



ARTWORK IS A REPEATING JACQUARDED STRIPE

NOT SHOWN TO SCALE BELOW

 RED DAHLIA
19-1555 TCX

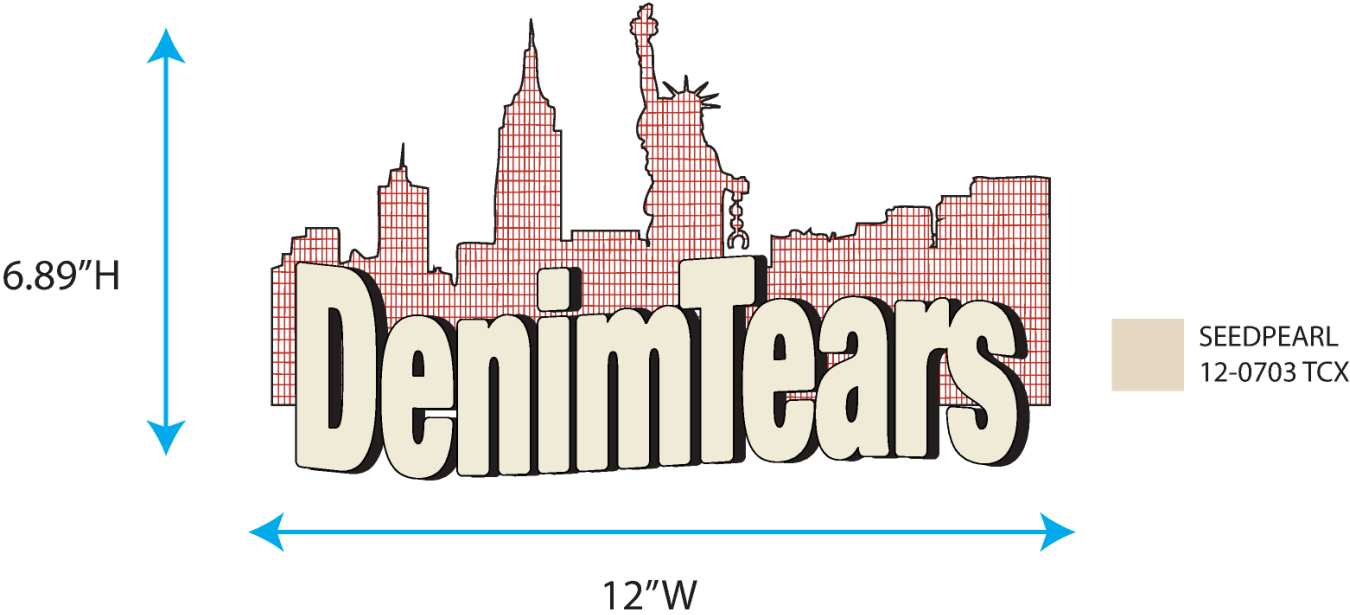




ARTWORK

ARTWORK IS A REPEATING JACQUARDED STRIPE
NOT SHOWN TO SCALE BELOW

RED DAHLIA
19-1555 TCX



DENIM TEARS CONFIDENTIAL UPDATED: 08/09/2025

6_CHEST ARTWORK-1



Sample Size: M

POINT OF MEASURE	TYPE	TOLERANCE	XS	S	M	L	XL	XXL
Body Length from CB Neck	Full	1/4 in	0 in	0 in	27 in	0 in	0 in	0 in
Shoulder Drop (Ref Point at 9 1/2" from CB Neck)	Full	1/8 in	0 in	0 in	1 3/4 in	0 in	0 in	0 in
Across Front @ 6" Blw HPS	Full	1/4 in	0 in	0 in	0 in	0 in	0 in	0 in
Across Back @ 6" Blw HPS	Full	1/4 in	0 in	0 in	0 in	0 in	0 in	0 in
Chest @ 1" Blw Armhole	Half	3/8 in	0 in	0 in	22 1/2 in	0 in	0 in	0 in
Bottom Sweep @ Edge	Half	3/8 in	0 in	0 in	22 in	0 in	0 in	0 in
Turnback Height @ Sweep	Full	1/8 in	0 in	0 in	7/8 in	0 in	0 in	0 in
Armhole Position Below HPS	Full	1/4 in	0 in	0 in	11 1/4 in	0 in	0 in	0 in
Front Raglan Placement from HPS @ Neck	Full	1/8 in	0 in	0 in	2 in	0 in	0 in	0 in
Back Raglan Placement from HPS @ Neck	Full	1/8 in	0 in	0 in	1 1/2 in	0 in	0 in	0 in
Front Raglan Length along Seam from Neck seam to SS	Full	1/4 in	0 in	0 in	0 in	0 in	0 in	0 in
Back Raglan Length along Seam from Neck seam to SS	Full	1/4 in	0 in	0 in	0 in	0 in	0 in	0 in
Bicep @ 1" Blw Armhole	Half	1/4 in	0 in	0 in	9 1/2 in	0 in	0 in	0 in
Sleeve Opening on Edge	Half	1/8 in	0 in	0 in	7 3/4 in	0 in	0 in	0 in
Turnback Height @ Sleeve Opening	Full	1/8 in	0 in	0 in	7/8 in	0 in	0 in	0 in
Sleeve Length from HPS	Full	1/4 in	0 in	0 in	15 3/4 in	0 in	0 in	0 in
Neck Width @ HPS (Sm to Sm)	Full	1/8 in	0 in	0 in	8 1/4 in	0 in	0 in	0 in
Front Neck Drop (HPS to CF Neck Sm)	Full	1/8 in	0 in	0 in	4 in	0 in	0 in	0 in
Back Neck Drop (HPS to CB Neck Sm)	Full	1/8 in	0 in	0 in	1 1/2 in	0 in	0 in	0 in
Neck Trim Height	Full	1/8 in	0 in	0 in	1 in	0 in	0 in	0 in
Minimum Neck Stretch	Full	0 in	0 in	0 in	24 in	0 in	0 in	0 in



Sample Size: M

POINT OF MEASURE	TYPE	TOLERANCE	EXPECTED	1ST PROTO - RCVD	VARIANCE	REVISED SPEC	MEASUREMENT NOTES	MEASUREMENT STATUS
Body Length from CB Neck	Full	1/4 in	27 1/4 in	27 1/2 in	1/4 in	27 in	Reduce -1/2"	See New Value
Shoulder Drop (Ref Point at 9 1/2" from CB Neck)	Full	1/8 in	1 3/4 in	1 7/8 in	1/8 in	1 3/4 in		-
Across Front @ 6" Blw HPS	Full	1/4 in	14 3/4 in	14 3/4 in	0 in	0 in	RVSD	See New Value
Across Back @ 6" Blw HPS	Full	1/4 in	16 1/2 in	16 3/8 in	-1/8 in	0 in	RVSD	See New Value
Chest @ 1" Blw Armhole	Half	3/8 in	23 in	23 in	0 in	22 1/2 in	Reduce -1/2"	See New Value
Bottom Sweep @ Edge	Half	3/8 in	22 1/2 in	22 1/2 in	0 in	22 in	Reduce -1/2"	See New Value
Turnback Height @ Sweep	Full	1/8 in	7/8 in	7/8 in	0 in	7/8 in		-
Armhole Position Below HPS	Full	1/4 in	10 3/4 in	11 1/2 in	3/4 in	11 1/4 in	Reduce -1/2"	See New Value
Front Raglan Placement from HPS @ Neck	Full	1/8 in	2 in	2 in	0 in	2 in		-
Back Raglan Placement from HPS @ Neck	Full	1/8 in	1 1/2 in	1 5/8 in	1/8 in	1 1/2 in		-
Front Raglan Length along Seam from Neck seam to SS	Full	1/4 in	12 1/2 in	13 in	1/2 in	0 in	FTY	See New Value
Back Raglan Length along Seam from Neck seam to SS	Full	1/4 in	13 1/2 in	14 3/4 in	1 1/4 in	0 in	FTY	See New Value
Bicep @ 1" Blw Armhole	Half	1/4 in	9 5/8 in	9 3/4 in	1/8 in	9 1/2 in	Reduce -1/2"	See New Value
Sleeve Opening on Edge	Half	1/8 in	7 1/2 in	7 3/4 in	1/4 in	7 3/4 in		Keep As Sample
Turnback Height @ Sleeve Opening	Full	1/8 in	7/8 in	7/8 in	0 in	7/8 in		-
Sleeve Length from HPS	Full	1/4 in	16 3/4 in	16 1/4 in	-1/2 in	16 in	Shorten Sleeve -1/2"	See New Value
Neck Width @ HPS (Sm to Sm)	Full	1/8 in	8 1/4 in	8 3/4 in	1/2 in	8 1/4 in		Back To Spec
Front Neck Drop (HPS to CF Neck Sm)	Full	1/8 in	4 in	4 3/8 in	3/8 in	4 in		Back To Spec
Back Neck Drop (HPS to CB Neck Sm)	Full	1/8 in	1 1/2 in	1 1/2 in	0 in	1 1/2 in		-
Neck Trim Height	Full	1/8 in	1 in	1 in	0 in	1 in		-
Minimum Neck Stretch	Full	0 in	24 in	24 in	0 in	24 in		-



Measured Size: M

POINT OF MEASURE	TYPE	TOLERANCE	EXPECTED	1ST PROTO - RCVD	VARIANCE	REVISED SPEC	MEASUREMENT NOTES	MEASUREMENT STATUS
Body Length from CB Neck	Full	1/4 in	27 1/4 in	27 1/2 in	1/4 in	27 in	Reduce -1/2"	See New Value
Shoulder Drop (Ref Point at 9 1/2" from CB Neck)	Full	1/8 in	1 3/4 in	1 7/8 in	1/8 in	1 3/4 in		-
Across Front @ 6" Blw HPS	Full	1/4 in	14 3/4 in	14 3/4 in	0 in	0 in	RVSD	See New Value
Across Back @ 6" Blw HPS	Full	1/4 in	16 1/2 in	16 3/8 in	-1/8 in	0 in	RVSD	See New Value
Chest @ 1" Blw Armhole	Half	3/8 in	23 in	23 in	0 in	22 1/2 in	Reduce -1/2"	See New Value
Bottom Sweep @ Edge	Half	3/8 in	22 1/2 in	22 1/2 in	0 in	22 in	Reduce -1/2"	See New Value
Turnback Height @ Sweep	Full	1/8 in	7/8 in	7/8 in	0 in	7/8 in		-
Armhole Position Below HPS	Full	1/4 in	10 3/4 in	11 1/2 in	3/4 in	11 1/4 in	Reduce -1/2"	See New Value
Front Raglan Placement from HPS @ Neck	Full	1/8 in	2 in	2 in	0 in	2 in		-
Back Raglan Placement from HPS @ Neck	Full	1/8 in	1 1/2 in	1 5/8 in	1/8 in	1 1/2 in		-
Front Raglan Length along Seam from Neck seam to SS	Full	1/4 in	12 1/2 in	13 in	1/2 in	0 in	FTY	See New Value
Back Raglan Length along Seam from Neck seam to SS	Full	1/4 in	13 1/2 in	14 3/4 in	1 1/4 in	0 in	FTY	See New Value
Bicep @ 1" Blw Armhole	Half	1/4 in	9 5/8 in	9 3/4 in	1/8 in	9 1/2 in	Reduce -1/2"	See New Value
Sleeve Opening on Edge	Half	1/8 in	7 1/2 in	7 3/4 in	1/4 in	7 3/4 in		Keep As Sample
Turnback Height @ Sleeve Opening	Full	1/8 in	7/8 in	7/8 in	0 in	7/8 in		-
Sleeve Length from HPS	Full	1/4 in	16 3/4 in	16 1/4 in	-1/2 in	16 in	Shorten Sleeve -1/2"	See New Value
Neck Width @ HPS (Sm to Sm)	Full	1/8 in	8 1/4 in	8 3/4 in	1/2 in	8 1/4 in		Back To Spec
Front Neck Drop (HPS to CF Neck Sm)	Full	1/8 in	4 in	4 3/8 in	3/8 in	4 in		Back To Spec
Back Neck Drop (HPS to CB Neck Sm)	Full	1/8 in	1 1/2 in	1 1/2 in	0 in	1 1/2 in		-
Neck Trim Height	Full	1/8 in	1 in	1 in	0 in	1 in		-
Minimum Neck Stretch	Full	0 in	24 in	24 in	0 in	24 in		-



COLOR IS WRONG. PLEASE
REFER TO TP.

THIS WAS SUPPOSE TO BE
JACQUARD INTO THE JERSEY

PLEASE UPDATE ARTWORK
STILL IN RED THREAD

Vui lòng cập nhật artwork – vẫn đang dùng chỉ màu đỏ.

BASE COLOR IS OFF. REFER TO
PANTONE COLOR IN TP

Screenshot 2025-11-20 at 2.05.17 PM.jpg



Fitting 11.24.25 - Misha Strelnikov

CREATED ON NOV 24, 2025 6:46 PM

**We are approving this 2nd proto as PPS

STATUS: APPROVED TO TOP W/ CORRECTIONS

- please, make corrections and send updated FTY advised measurements

FIT/PATTERN

- 1) See photo comments and update front/back raglan seam shapes and raglan sleeve width at cap for more room
- 2) Once this is done, please grade down the entire garment by half size:
 - reduce body length -1/2"
 - reduce the entire body width -1/2"
 - raise armhole and reduce bicep -1/4"
 - adjusted sleeve length (after corrected neck width) should be at 16"
- 3) Neck is off spec:
 - increase neck width +1/2"
 - raise front neck drop by 3/8"

CONSTRUCTION/WORKMANSHIP

- 1) The overall finish looks good
- 2) Remove back neck tape and finish the entire neck with split double needle

Thanks,
Misha

TÌNH TRẠNG: ĐƯỢC PHÊ DUYỆT VỚI CÁC ĐIỀU CHỈNH

- Vui lòng thực hiện các chỉnh sửa và gửi lại bảng thông số được nhà máy đề xuất cập nhật

FIT/PATTERN

Xem các bình luận bằng hình ảnh và cập nhật lại đường ráp raglan (trước/sau) cũng như độ rộng tay raglan tại phần cap để có thêm độ thoải mái.

Sau khi hoàn tất, vui lòng grade toàn bộ sản phẩm xuống 1/2 size:

- giảm chiều dài thân -1/2"
- giảm chiều rộng thân -1/2"
- nâng vòng nách và vòng bắp tay +1/4"
- chiều dài tay (sau khi chỉnh chiều rộng cổ) cần là 16"

Độ rộng cổ chưa đúng chuẩn:

- tăng độ rộng cổ thêm +1/2"
- hạ độ sâu cổ trước +3/8"

CONSTRUCTION/WORKMANSHIP

Tổng thể hoàn thiện tốt

Bỏ viên cổ sau và finish bằng điều 2 kim từ cổ trước sang cổ sau



SS26TSS1616 Jacquard City SS Tee - 2nd proto

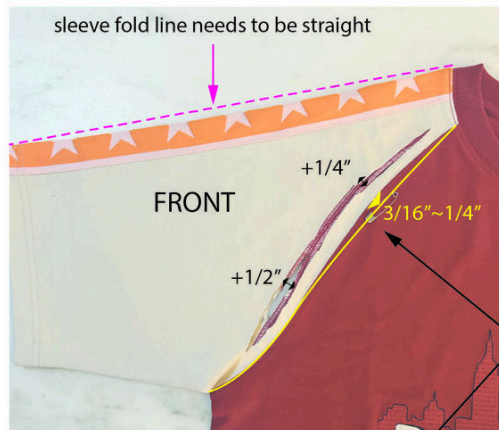


SS26TSS1616 JAcquard City SS Tee - 2nd proto-01.jpg

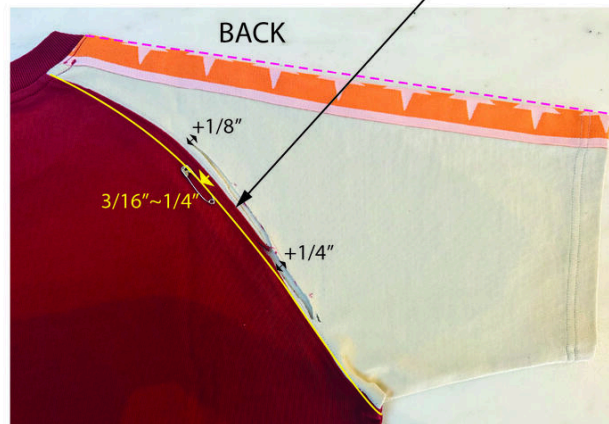


SS26TSS1616 Jacquard City SS Tee - 2nd proto

A INCREASE RAGLAN WIDTH AND STRAIGHTEN
THE RAGLANS' SHAPE



STRAIGHTEN THE RAGLAN SHAPE
(ADD BACK TO RAGLAN WIDTH SO
THE CAP DOESN'T BECOME TOO TIGHT)



Tăng độ rộng raglan và chỉnh thẳng lại đường raglan

Đường gấp sườn tay cần được làm thẳng

Cần chỉnh lại đường raglan (thêm lại độ rộng raglan để phần cap không bị quá chật)

Các đo đặc điều chỉnh thể hiện trên ảnh:

Mặt trước: +1/4", +1/2", 3/16"~1/4"

Mặt sau: +1/8", +1/4", 3/16"~1/4"

SS26TSS1616 JAcquard City SS Tee - 2nd proto-02.jpg