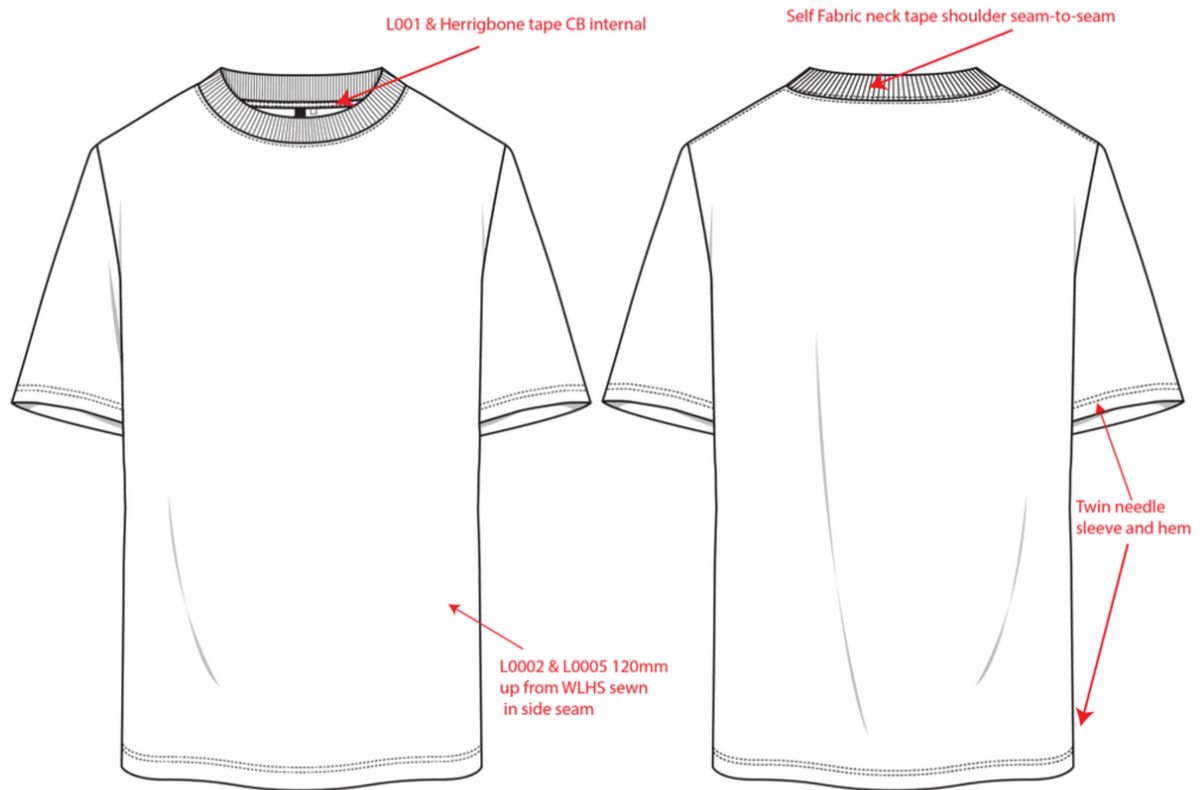


| | | | |
|-------------|---|-------------|----------------------------------|
| Description | Trust The Process Heavyweight Unisex Oversized Tee | Collection | |
| Type | Train Tees | Story | |
| Size Scale | 2XS-3XL | Category | Tops |
| Agent | | License | |
| Factory | Un-Available Ltd | Design No. | |
| Designer | Jah Baldi | Label | |
| Colour | Off White-Electric Indigo, Digital Mist-Ultra Pink, Black-White | Composition | 100% Cotton - 220gsm Heavyweight |



SPECIFICATION

| POM | POINTS TO MEASURE | 2XS | XS | S | M | L | XL | 2XL | 3XL | Tol+ | Tol- |
|-----|---------------------------------------|------|-------|------|-------|------|-------|------|-------|------|------|
| A | Chest 2.5cm below armhole - FLAT | 56.5 | 59 | 61.5 | 64 | 66.5 | 69 | 71.5 | 74 | 1.5 | 1.5 |
| B | Sweep - FLAT | 53 | 55.5 | 58 | 60.5 | 63 | 65.5 | 68 | 70.5 | 1.5 | 1.5 |
| C | Shoulder Breadth | 54 | 55.5 | 57 | 58.5 | 60 | 61.5 | 63 | 64.5 | 2 | 2 |
| D | Neck Width: Seam to Seam w/o trim | 19.9 | 20.5 | 21.1 | 21.7 | 22.3 | 22.9 | 23.5 | 24.1 | 0 | 0 |
| E | Neck trim height (Rib) | 3 | 3 | 3 | 3 | 3 | 3 | 3 | 3 | 0 | 0 |
| F | FT neck depth from H.P.S w/o trim | 10.4 | 10.55 | 10.7 | 10.85 | 11 | 11.15 | 11.3 | 11.45 | 0 | 0 |
| G | BK neck depth from H.P.S w/o trim | 3.5 | 3.5 | 3.5 | 3.5 | 3.5 | 3.5 | 3.5 | 3.5 | 0 | 0 |
| H | Length from H.P.S. to Sweep | 70.5 | 71.75 | 73 | 74.25 | 75.5 | 76.75 | 78 | 79.25 | 1.25 | 1.25 |
| I | Shoulder slope w/o trim | 7.5 | 7.5 | 7.5 | 7.5 | 7.5 | 7.5 | 7.5 | 7.5 | 0 | 0 |
| J | Sleeve Length (Shoulder seam to cuff) | 17.5 | 18.5 | 19.5 | 20.5 | 21.5 | 22.5 | 23.5 | 24.5 | 0.5 | 0.5 |
| K | Sleeve opening -FLAT | 17 | 18 | 19 | 20 | 21 | 22 | 23 | 24 | 0.25 | 0.25 |
| L | Sleeve Underarm Length | 9 | 10 | 11 | 12 | 13 | 14 | 15 | 16 | 0.5 | 0.5 |
| M | Armhole Curve -FLAT | 25 | 26 | 27 | 28 | 29 | 30 | 31 | 32 | 0.5 | 0.5 |



DEFINITION

Fabric

| Colourway | Code | Description | Colour | QTY | Source |
|-----------|-----------------------|--|--------|-----|---------|
| All | UA-Heavyweight-220gsm | Heavyweight Single Jersey 100% Cotton Mill Name: Un-Available 220GSM | | | Factory |
| All | RIB 1X1_100% | Heavyweight Cotton RIB 1X1 Mill Name: Un-Available COTTON_SOLID_320_S0004 100% COTTON | | | Factory |

Trim

| Colourway | Code | Description | Colour | QTY | Source |
|-----------|-----------|---|--------|-----|---|
| All | P0001 | Jersey & Fleece - Garment Polybag - 42.5cm x 32cm - AS5810 - Bone Seal Compostable resin Thickness: 70micron | | | Wuhan Huali Biomaterial Co., Ltd |
| All | L0002 | Printed Care Label - Jersey & Fleece Styles Polyester/Satin | | | Factory |
| All | SR0001 | 260mm White Recycled String & White Recycled Clasp (Jersey/Fleece) | | | JOINTAK |
| All | L0005 | PO/SKU Label Poly/Satin | | | Factory |
| All | HT0001 | 1CM Loop Herringbone Tape Cotton Herringbone Tape 100% Match Main Label Colour | | | Factory |
| All | SGNGL-058 | Large swing tag - format for sticker information | | | Factory |
| All | L0001 | Brand Label - 40W x 32.5H (Folded) 1% Better Everyday Designed In Australia High Density Woven Label | | | Factory |

IMAGES

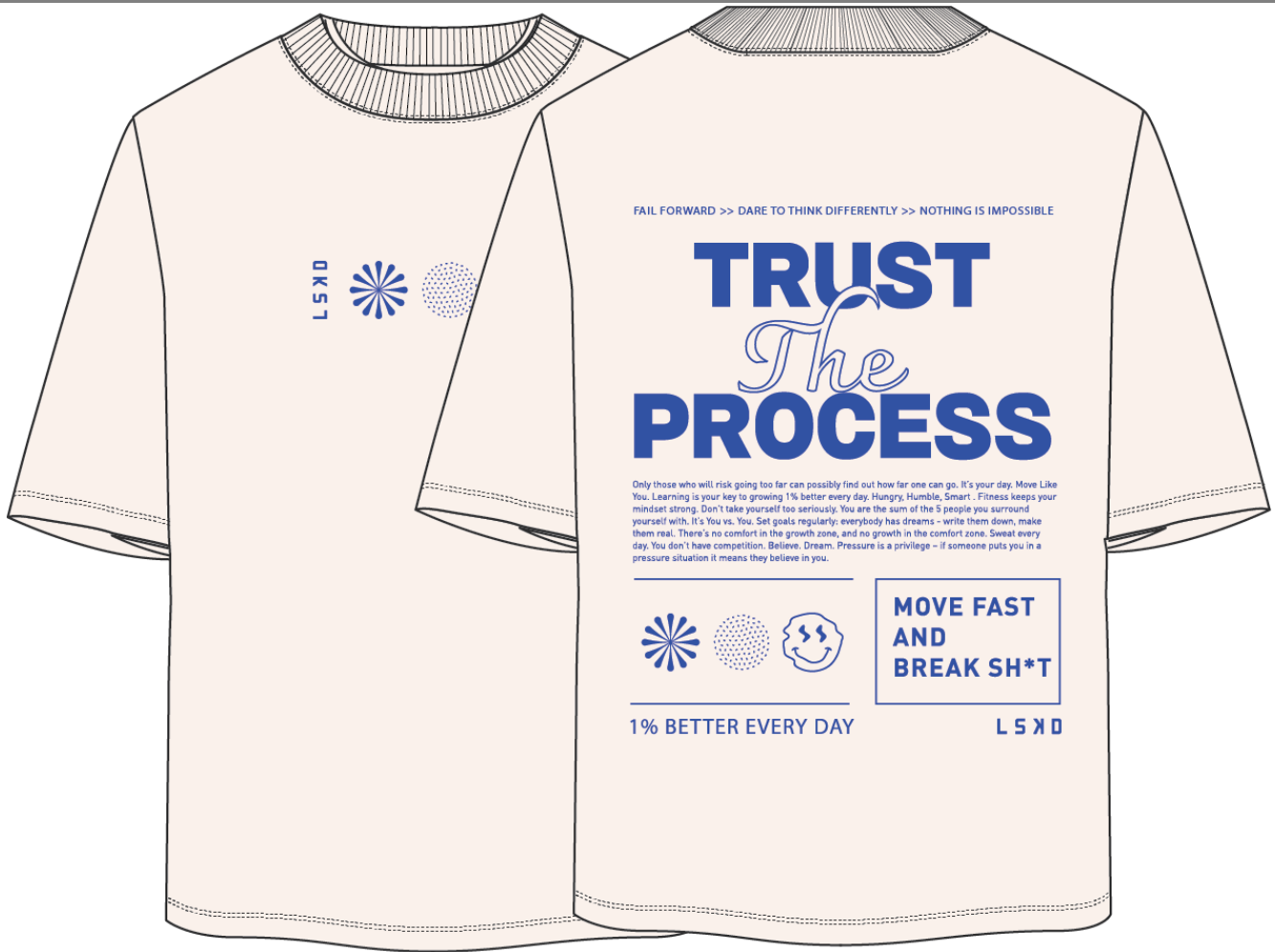


Digital Mist
13-4303 TCX



Ultra Pink
LSKD standard





Off White
11-1001 TCX 2

Electric Indigo
120-32-36