

SAMPLE REPORT

Description Urban Blur Heavyweight Unisex Oversized Tee

Status App.nextround

Report Pre Production

Designer Jah Baldi

Spec UNISEX OVERSIZE 11A119

Colour (0002) White-Black

Unit CM

Agent

Size S,L

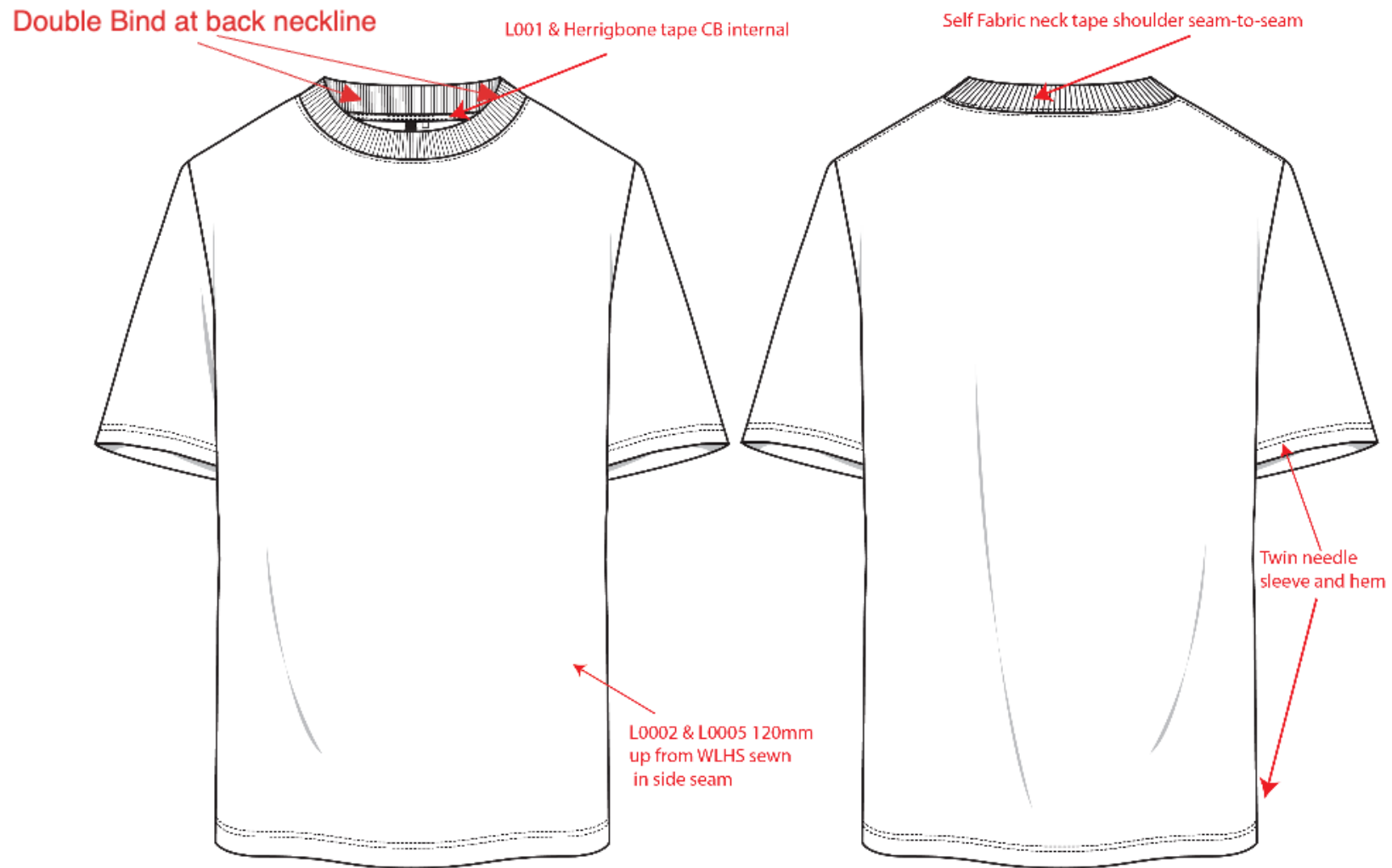
Factory Un-Available Ltd



Specification

POM	POINTS TO MEASURE	S	V	R	Rev	L	V	R	Rev	Tol+	Tol-
A	Chest 2.5cm below armhole - FLAT	61.5	60	-1.5		66.5	65.4	-1.1		1.5	1.5
B	Sweep - FLAT	58	56.4	-1.6		63	62.6	-0.4		1.5	1.5
C	Shoulder Breadth	57	56.3	-0.7		60	59.6	-0.4		2	2
D	Neck Width: Seam to Seam w/o trim	21.1	20.7	-0.4		22.3	22	-0.3		0.7	0.7
E	Neck trim height (Rib)	3	3			3	3.3	0.3		0.3	0.3
F	FT neck depth from H.P.S w/o trim	10.7	10.8	0.1		11	11.5	0.5		0.5	0.5
G	BK neck depth from H.P.S w/o trim	3.5	3.3	-0.2		3.5	3.3	-0.2		0.3	0.3
H	Length from H.P.S. to Sweep	73	73.7	0.7		75.5	75.9	0.4		1.25	1.25
I	Shoulder slope w/o trim	7.5	7.5			7.5	7.5			0.5	0.5
J	Sleeve Length (Shoulder seam to cuff)	19.5	21.3	1.8		21.5	23.8	2.3	23.5	0.5	0.5
K	Sleeve opening -FLAT	19	19			21	20.7	-0.3		0.5	0.5
L	Sleeve Underarm Length	11	13	2		13	15	2		0.5	0.5
M	Armhole Curve -FLAT	27	26	-1		29	27.7	-1.3		0.5	0.5

Sketch



Images



Images



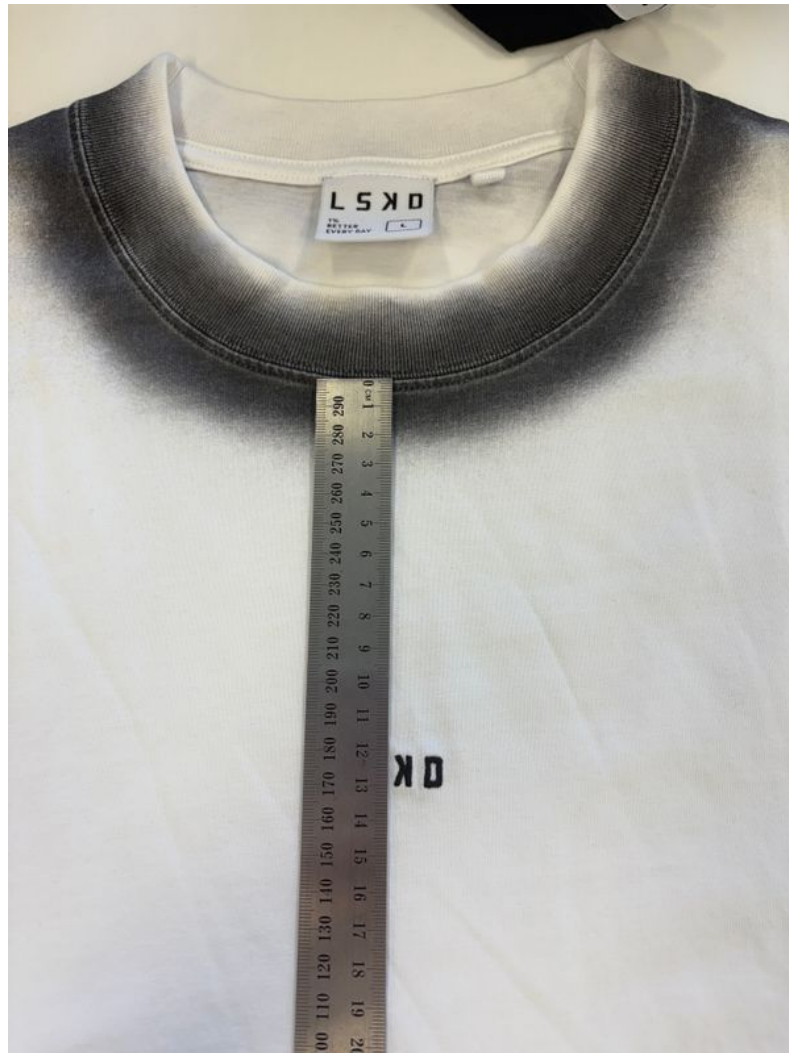
Large- please ensure embroidery is matching spec of 35mm

Images



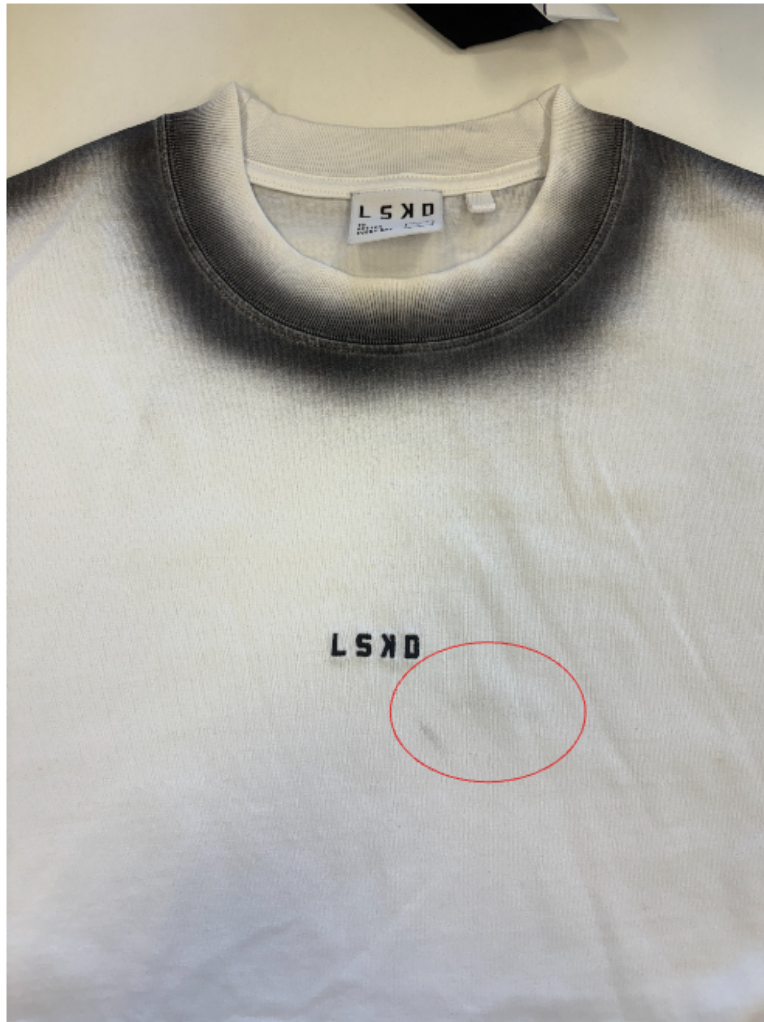
Single needle chainstitch on neckline

Images



Please ensure front print is 13cm from CF

Images



dark marks found at front please improve
ensure not found in bulk.

Thank you!

Images



Dark marks found please improve

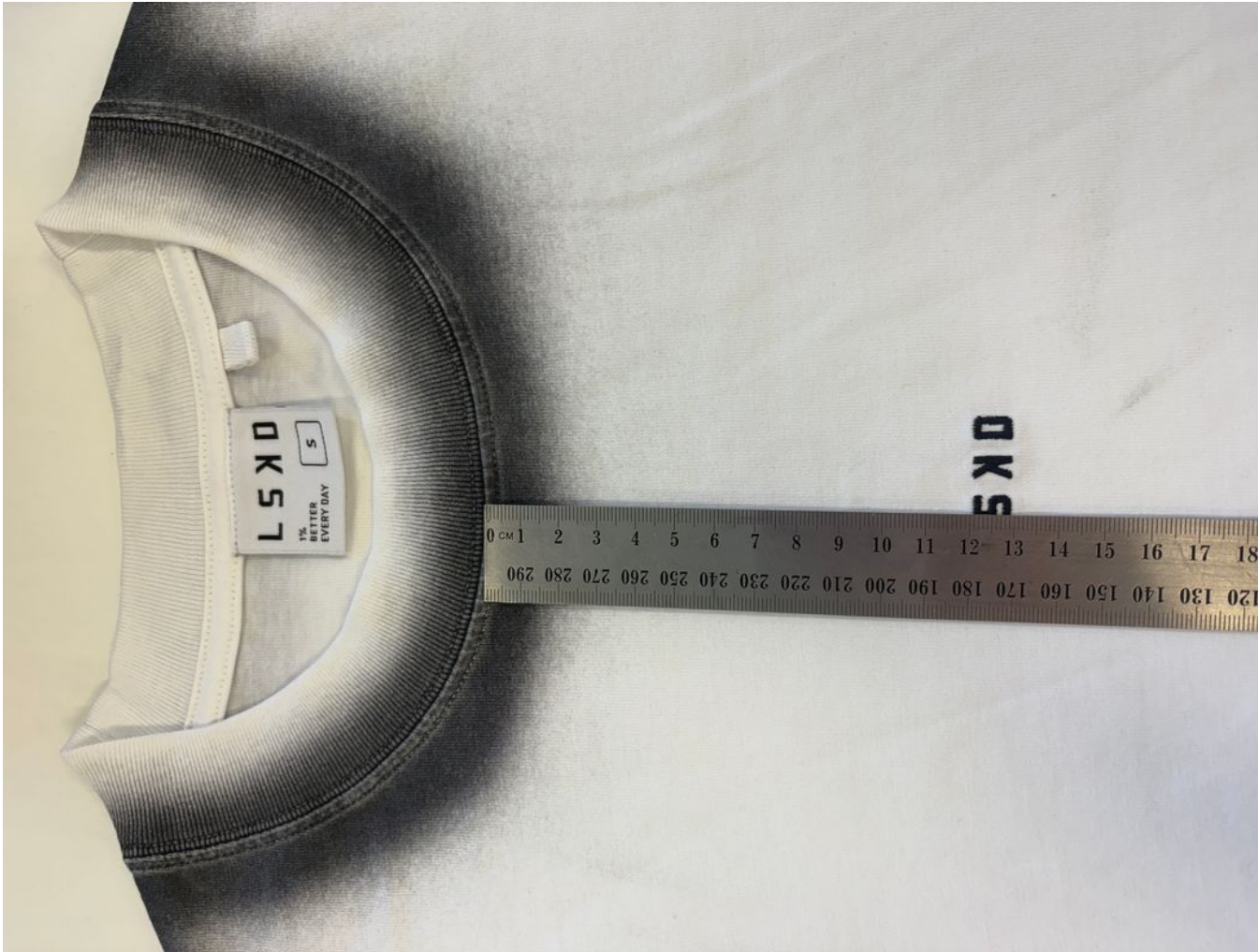
Thank you!

Images



Small- please ensure embroidery is matching spec of 35mm

Images



Please ensure front print is 13cm from CF

Images



Moving forward please ensure hem is encased in twin needle as pictured.

Images



Images



Images





LSKD Pty Ltd
46 Burchill Street
Unit 2
Loganholme, Queensland, 4129
Australia

Phone:61738074442
Email:murilof@lskd.co

Style No. USST02488

Generated By 3 Clicks 7 Aug 2025

Page 15 of 15

Notes

Amelia Bosgra 7 Aug 2025 Updated by Amelia Bosgra 7 Aug 2025

Go back to spec on all OOT measurements
APPROVED with comments applied.
Hem and cuff updated to be 2cm
Thank you!