

SAMPLE REPORT

Description Contrast Heavyweight Unisex Oversized Tee

Report Proto

Spec UNISEX OVERSIZE 11A119

Unit CM

Size S

Status In Progress

Designer Jah Baldi

Colour (WHI) White-Power Cobalt

Agent

Factory Un-Available Ltd

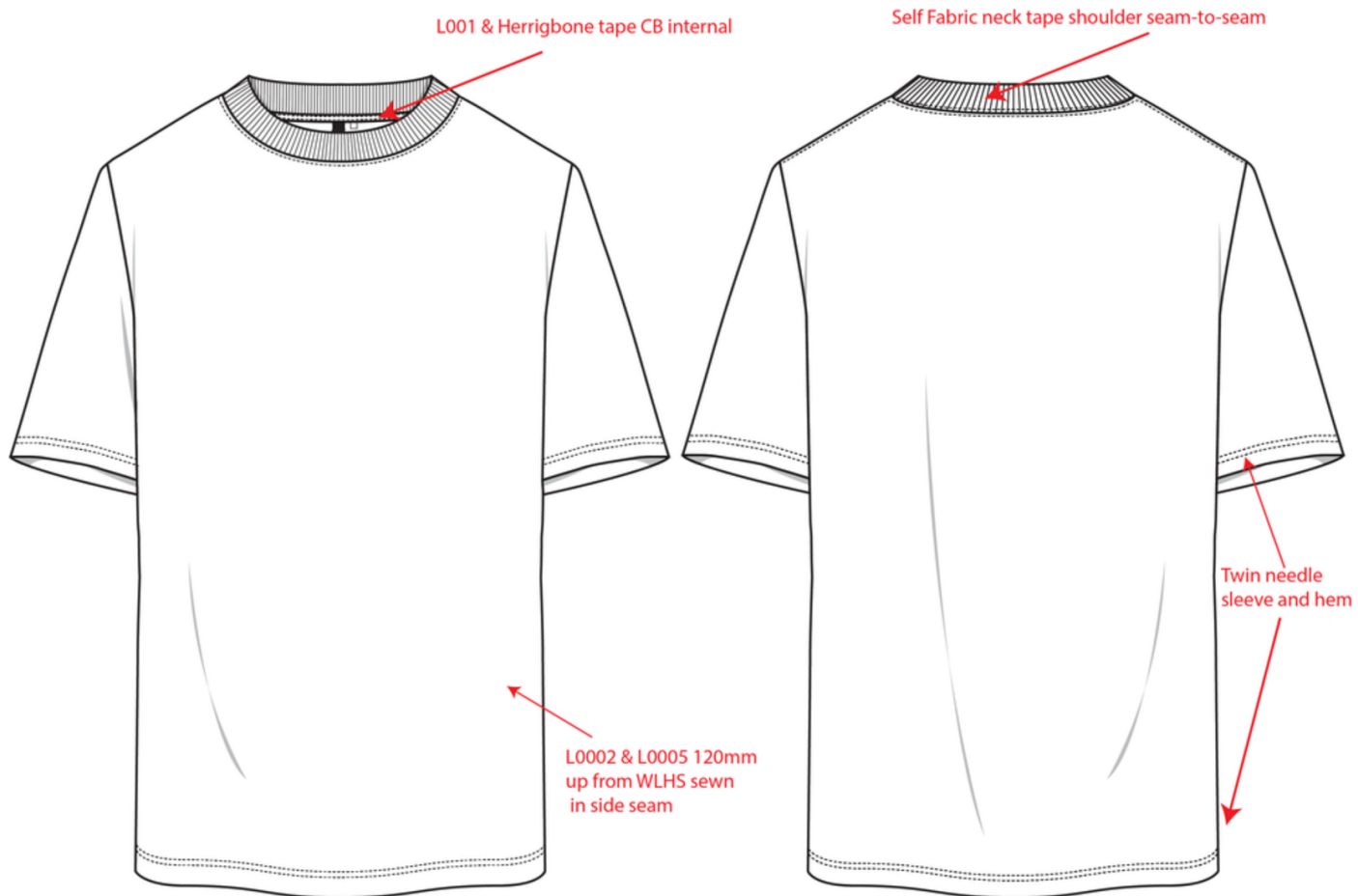


Specification

POM	POINTS TO MEASURE	S	V	R	Rev	Tol+	Tol-
A	Chest 2.5cm below armhole - FLAT	54.5	54.1	-0.4		1.5	1.5
B	Sweep - FLAT	54.5	54.3	-0.2		1.5	1.5
C	Shoulder Breadth	53.5	52.6	-0.9		2	2
D	Neck Width: Seam to Seam (Excluding Trim)	20.4	19.6	-0.8		0	0
E	Neck trim height (Rib)	2	2			0	0
F	FT neck depth from H.P.S w/o trim	9.7	9.6	-0.1		0	0
G	BK neck depth from H.P.S w/o trim	3				0	0
H	Length from H.P.S. to Sweep	74.25	74.8	0.55		1.25	1.25
I	Shoulder slope w/o trim	7.5	7.1	-0.4		0	0
J	Sleeve Length (Shoulder seam to cuff)	21.5	21.7	0.2		0.5	0.5
K	Sleeve opening -FLAT	17.5	18.2	0.7		0.25	0.25
L	Sleeve Underarm Length	13	13.5	0.5		0.5	0.5
M	Armhole Curve -FLAT	27	27.3	0.3		0.5	0.5

POM	POINTS TO MEASURE	S	V	R	Rev	Tol+	Tol-
N	Minimum Neck Opening Stretch - FLAT	29				0.5	0.5

Sketch





LSKD Pty Ltd
46 Burchill Street
Unit 2
Loganholme, Queensland, 4129
Australia

Phone:61738074442
Email:murilof@lskd.co

Style No. USST02484

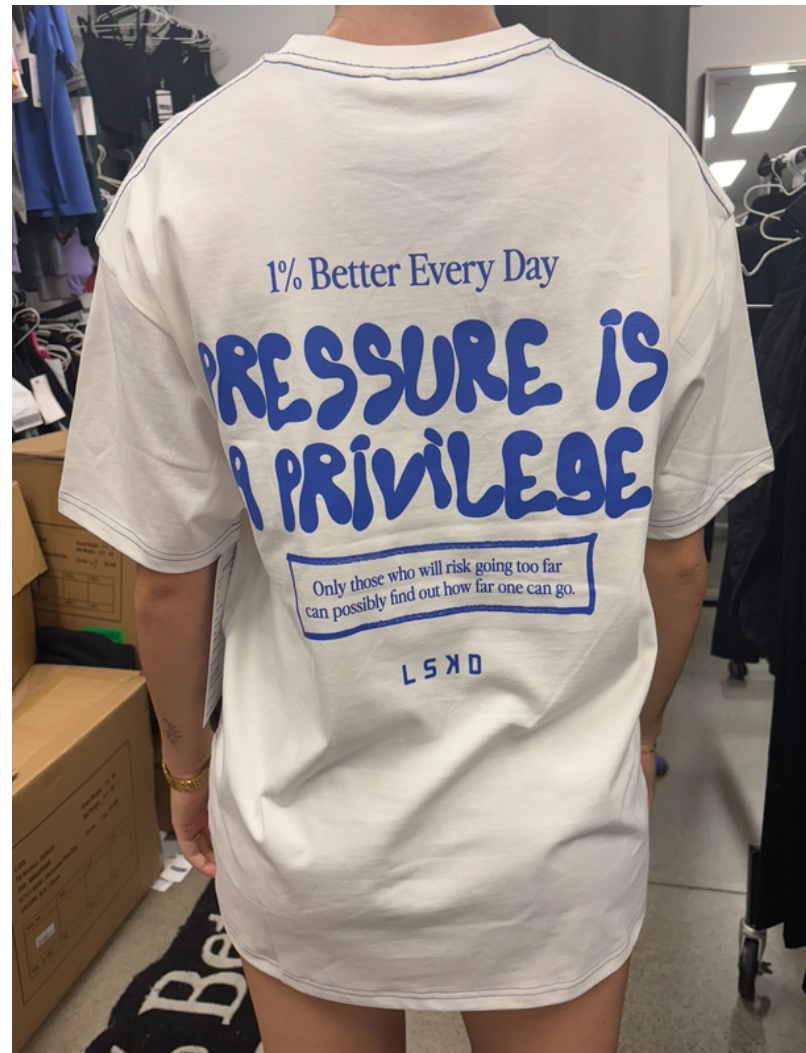
Generated By 3 Clicks 14 Apr 2025

Page 3 of 5

Images



Images





LSKD Pty Ltd
46 Burchill Street
Unit 2
Loganholme, Queensland, 4129
Australia

Phone:61738074442
Email:murilof@lskd.co

Style No. USST02484

Generated By 3 Clicks 14 Apr 2025

Page 5 of 5

Notes

Amelia Bosgra 17 Mar 2025

Go back to spec on all OOT measurements
spec has been updated please follow updated spec for next submission
Please have front print 21cm from HSP
Thank you!