

SAMPLE REPORT

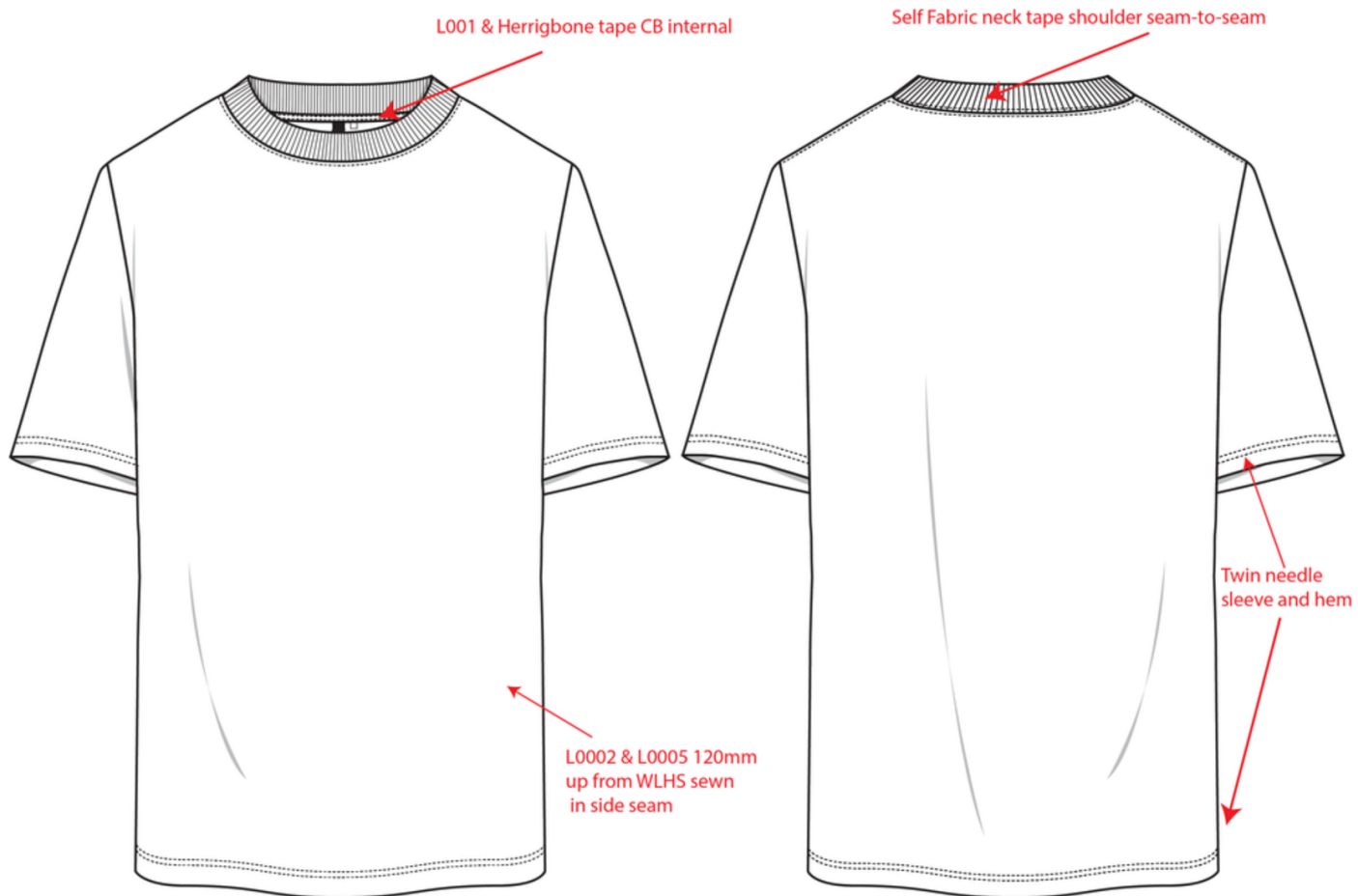
Description Globe Heavyweight Unisex Oversized Tee**Status** In Progress**Report** Proto**Designer** Jah Baldi**Spec** UNISEX OVERSIZE 11A119**Colour** (WHI) White-Power Cobalt**Unit** CM**Agent****Size** L**Factory** Un-Available Ltd

Specification

POM	POINTS TO MEASURE	L	V	R	Rev	Tol+	Tol-
A	Chest 2.5cm below armhole - FLAT	59.5	59.8	0.3		1.5	1.5
B	Sweep - FLAT	59.5	58.7	-0.8		1.5	1.5
C	Shoulder Breadth	56.5	56.3	-0.2		2	2
D	Neck Width: Seam to Seam (Excluding Trim)	21.6	21.5	-0.1		0	0
E	Neck trim height (Rib)	2	1.9	-0.1		0	0
F	FT neck depth from H.P.S w/o trim	10.3	11.2	0.9		0	0
G	BK neck depth from H.P.S w/o trim	3	3			0	0
H	Length from H.P.S. to Sweep	76.75	77.7	0.95		1.25	1.25
I	Shoulder slope w/o trim	7.5	7.9	0.4		0	0
J	Sleeve Length (Shoulder seam to cuff)	23.5	23.5			0.5	0.5
K	Sleeve opening -FLAT	19.5	20.2	0.7		0.25	0.25
L	Sleeve Underarm Length	15	15.5	0.5		0.5	0.5
M	Armhole Curve -FLAT	29	29.5	0.5		0.5	0.5

POM	POINTS TO MEASURE	L	V	R	Rev	Tol+	Tol-
N	Minimum Neck Opening Stretch - FLAT	29				0.5	0.5

Sketch



Images





LSKD Pty Ltd
46 Burchill Street
Unit 2
Loganholme, Queensland, 4129
Australia

Phone:61738074442
Email:murilof@lskd.co

Style No. USST02486

Generated By 3 Clicks 10 Apr 2025

Page 4 of 5

Images





LSKD Pty Ltd
46 Burchill Street
Unit 2
Loganholme, Queensland, 4129
Australia

Phone:61738074442
Email:murilof@lskd.co

Style No. USST02486

Generated By 3 Clicks 10 Apr 2025

Page 5 of 5

Notes

Amelia Bosgra 19 Mar 2025

PLEASE USE UPDATED ARTWORK FOR NEXT SUBMISSION

Amelia Bosgra 17 Mar 2025

Please note spec has been updated - please use updated spec

Amelia Bosgra 14 Mar 2025 Updated by Amelia Bosgra 19 Mar 2025

Go back to spec on all OOT measurements

Thank you

Amelia Bosgra 14 Mar 2025

PRINT SIZE

FRONT - APPROVED

BACK - APPROVED

PRINT PLACEMENT

FRONT- APPROVED

BACK- RAISE 1CM TO MATCH SPEC