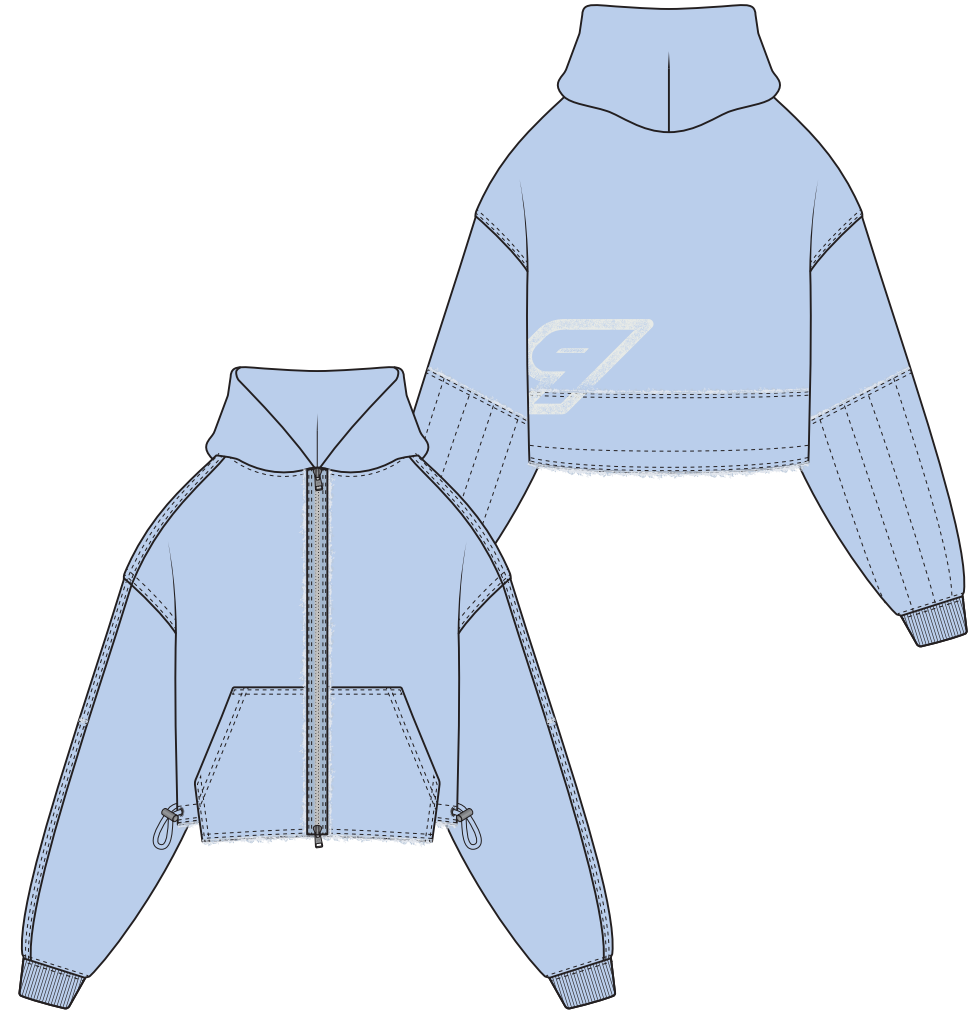
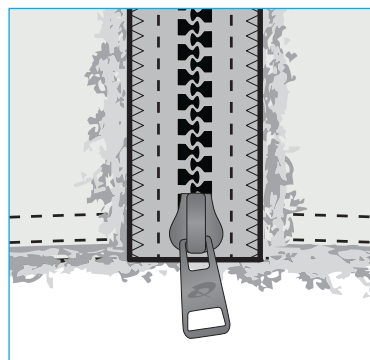


SEASON / DROP	SS25 / CAPSULE 2 / JULY	STATUS	PROTO 1
BLOCK	CORE CROP HOODIE	SIZE RANGE	XXS - XL
FABRIC	COTTON LOOPBACK SWEAT 570 - 1601	AUTHOR	MEES VISSER
MANUFACTURER	n/a	CREATED - UPDATED	19 / 03 / 25 - / /



COLOURWAY #1		COLOURWAY #2	
COLOUR / CODE	Puce 19-1518 TCX / 501	COLOUR / CODE	Open Air 15-3922 TCX / 302
SAMPLE SIZE	n/a	SAMPLE SIZE	n/a
SAMPLE QUANTITY	n/a	SAMPLE QUANTITY	n/a

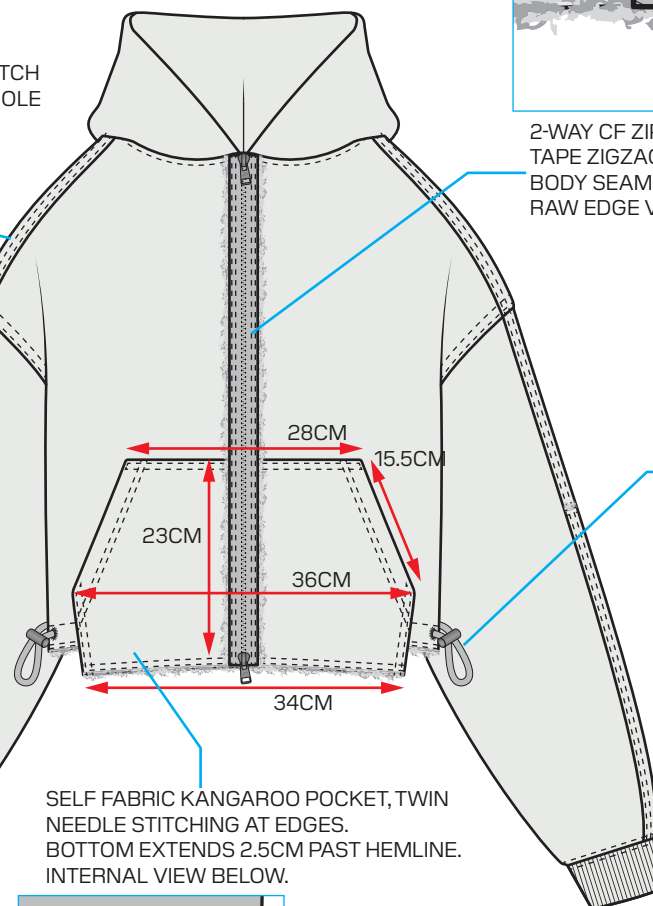
TWIN NEEDLE TOPSTITCH ON SHOULDER, ARMHOLE & OVERARM SEAMS



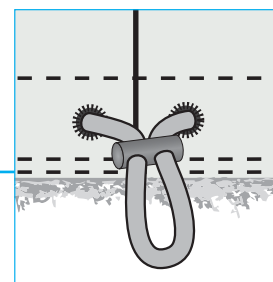
2-WAY CF ZIP WITH ZIP TAPE APPLIED EXTERNALLY. EDGE OF ZIP TAPE ZIGZAG STITCHED. BODY SEAM ALLOWANCE EXTENDING UNDER ZIP TAPE AND RAW EDGE VISIBLE.



SINGLE PIECE HOOD WITH DART. LINED IN SELF FABRIC.

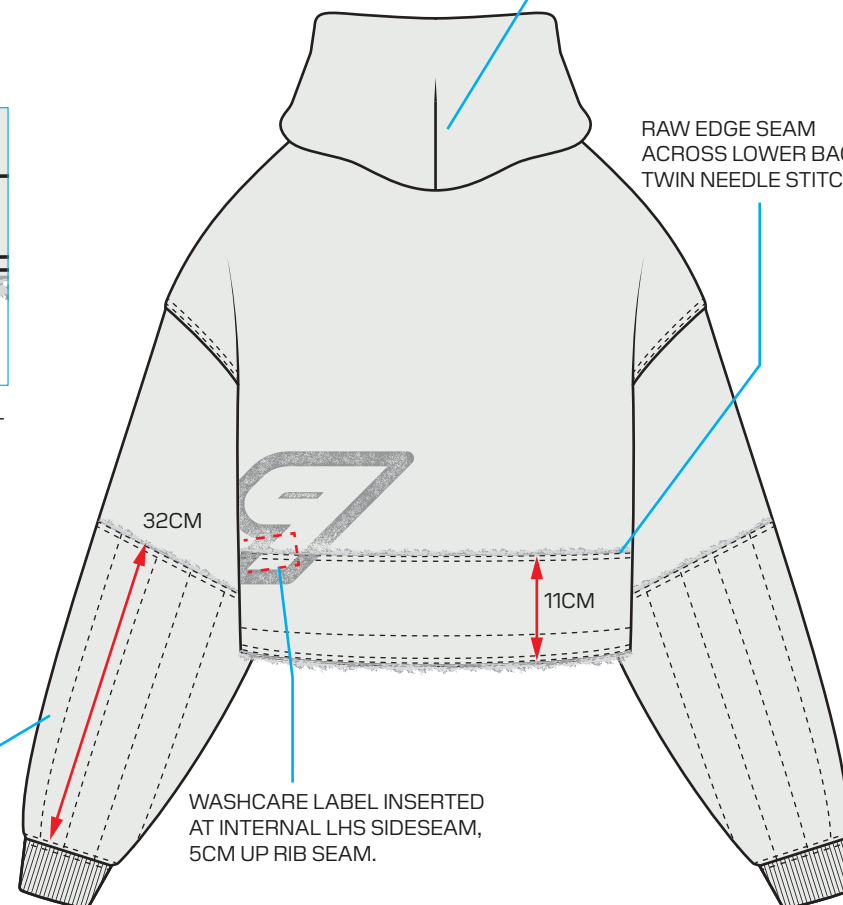


SELF FABRIC KANGAROO POCKET, TWIN NEEDLE STITCHING AT EDGES. BOTTOM EXTENDS 2.5CM PAST HEMLINE. INTERNAL VIEW BELOW.



DRAWCORD CHANNEL AT HEM WITH CORD LOCKS AT SIDESEAMS. CORD EXITS THROUGH EMBROIDERED EYELETS.

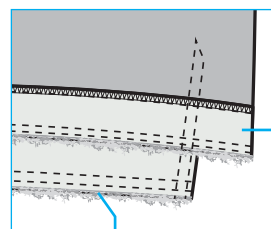
RAW EDGE SEAM ACROSS LOWER BACK, TWIN NEEDLE STITCHING



WASHCARE LABEL INSERTED AT INTERNAL LHS SIDESEAM, 5CM UP RIB SEAM.

SELF FABRIC PATCH AT LOWER REAR SLEEVE. TOP OF PATCH HAS RAW EDGE. PARALLEL QUILTING W/ 4CM DISTANCE.

HEMLINE FINISHED WITH RAW EDGE. 3CM INTERNAL SELF FABRIC FACING WITH RAW EDGE AT BOTTOM AS WELL.

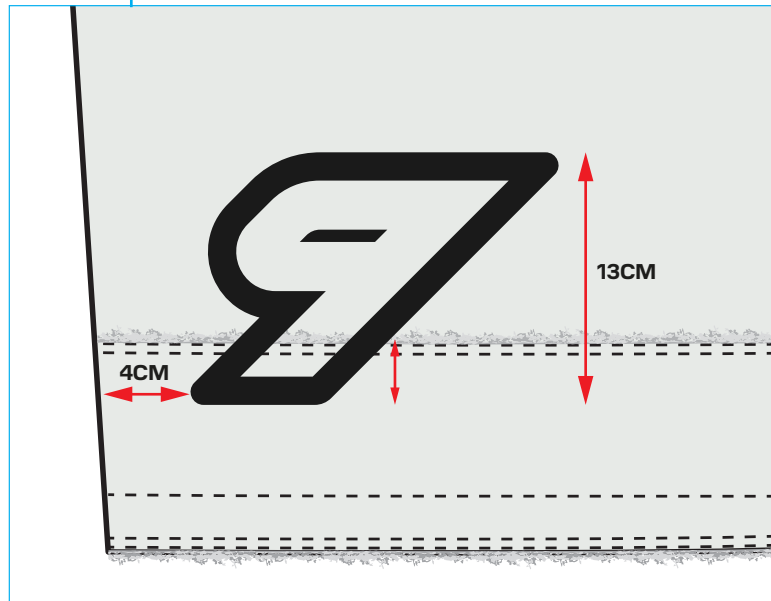
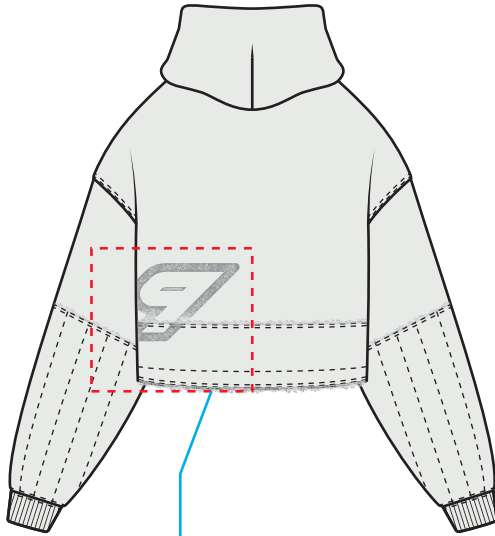


FACING OF LOWER SECTION OF POCKETBAG ALSO FINISHED WITH RAW EDGE.

6CM DEEP RIB CUFF, TWIN NEEDLE COVERSTITCH AT SEAM

STAMP STYLE PRINT

STAMP STYLE SCREENPRINT APPLIED OVER RAW EDGE SEAM.
SCALED ARTWORK FILE PROVIDED SEPARATELY.



FABRIC BASE COLOUR

PUCE
19-1518 TCX



PRINT COLOUR

BLANC DE BLANC
11-4800 TCX



OPEN AIR
15-3922 TCX

BLANC DE BLANC
11-4800 TCX

PRINT REFERENCES

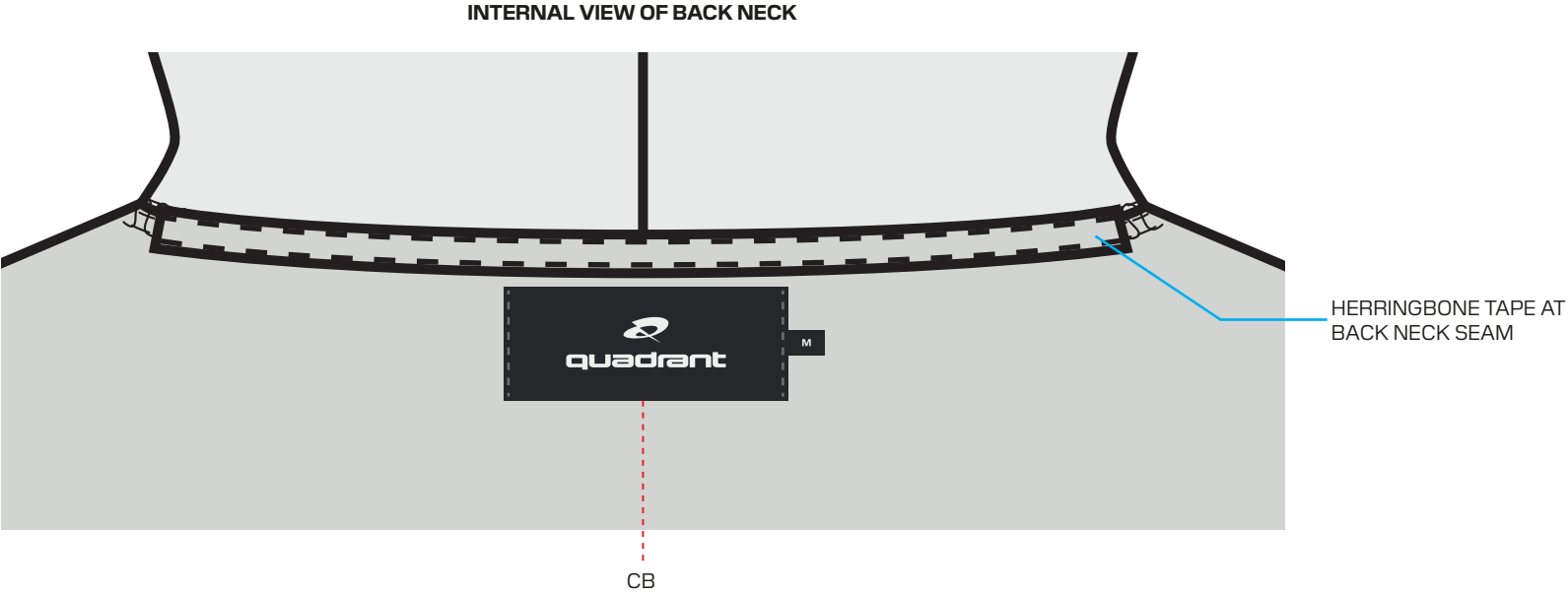
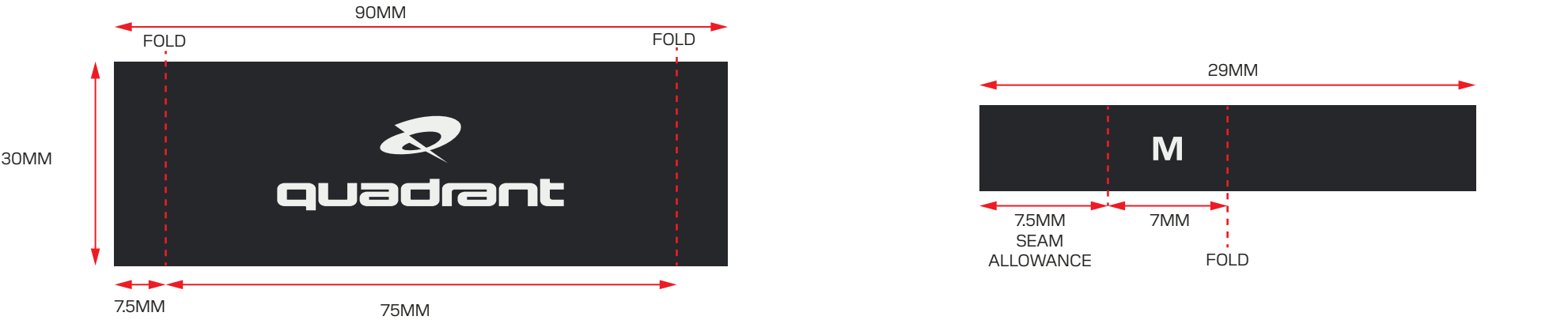


BACK NECK LABEL

BACK NECK LABEL PLACED CENTRALLY TO CB NECK,BELOW COLLAR.

FOLDED SIZE PIP INSERTED UNDERNEATH LABEL AT RHS, 7.5MM SEAM ALLOWANCE.

LABEL STITCHED DOWN AT EACH SIDE, THREAD COLOUR TO MATCH ON LABEL AND EXTERNAL OF GARMENT.



GARMENT WASH

ENZYME WASH GARMENT TO ACHIEVE LIGHT WASHED EFFECT.
AIM FOR PANTONE COLOUR POST-WASH.

ONLY APPLIES TO COLOURWAY #2 - EBONY



TRIMS

CORD LOCK:
2-CHANNEL METAL CORD LOCK FOR 4MM CORD.
BRUSHED FINISH



CORD:
4MM ELASTIC BUNGEE CORD
TONAL / DTM



ZIP:
YKK 2-WAY SIZE 5 METAL ZIP
TRAP7 PULLER
MATTE SILVER FINISH

