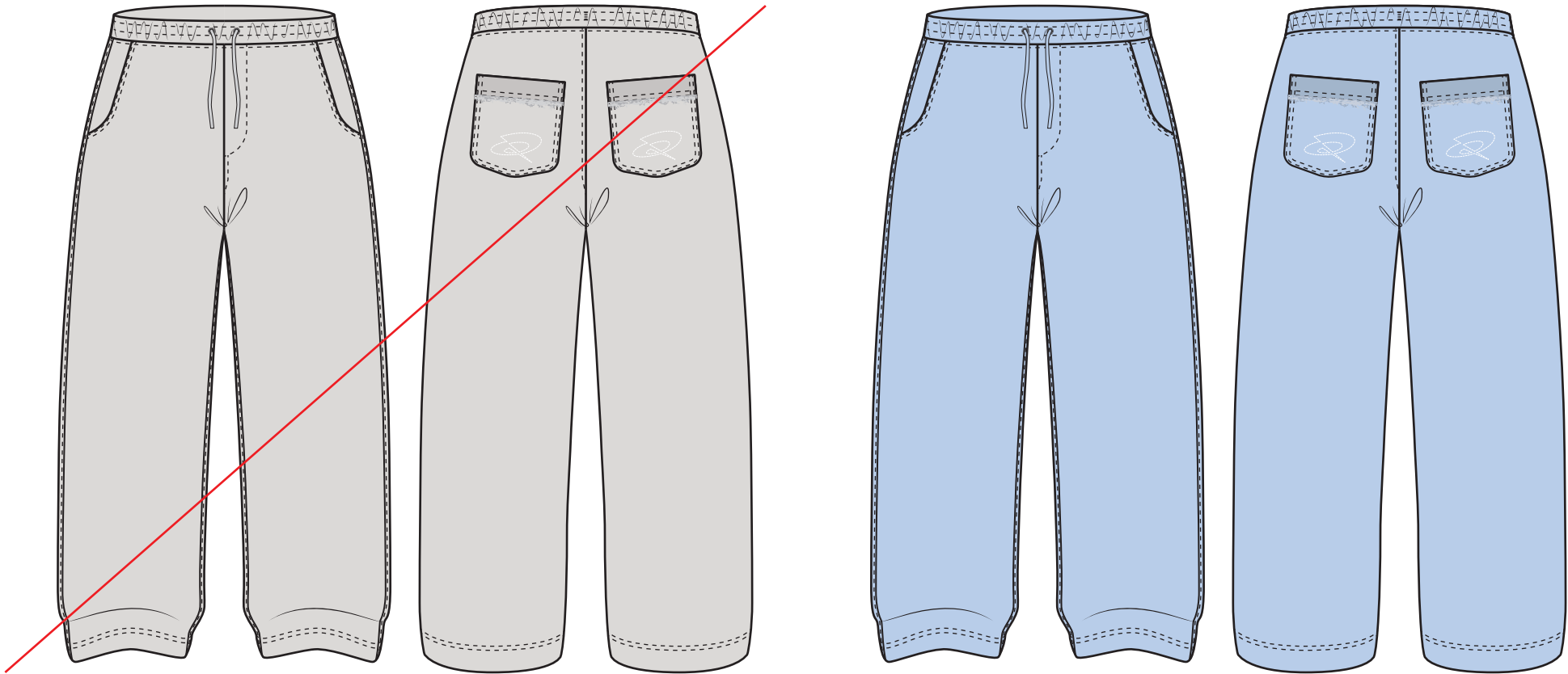


SEASON / DROP	SS25 / CAPSULE 1 / JUNE	STATUS	PROTO 1
BLOCK	JOGGER (NEW)	SIZE RANGE	XS - XXL
FABRIC	COTTON LOOPBACK SWEAT 570 - 1601	AUTHOR	MEES VISSER
MANUFACTURER	n/a	CREATED - UPDATED	09 / 04 / 25 - / /

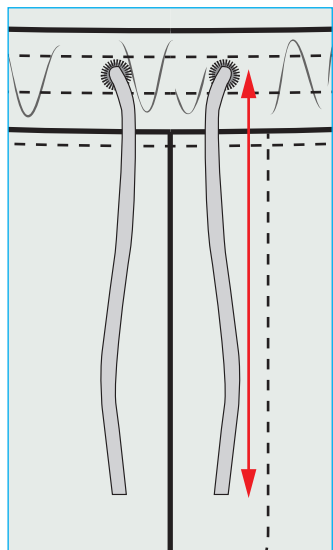


COLOURWAY #1		COLOURWAY #2	
COLOUR / CODE	White Sand 13-0002 TCX 002	COLOUR / CODE	Open Air 15-3922 TCX 302
SAMPLE SIZE	n/a	SAMPLE SIZE	n/a
SAMPLE QUANTITY	n/a	SAMPLE QUANTITY	n/a

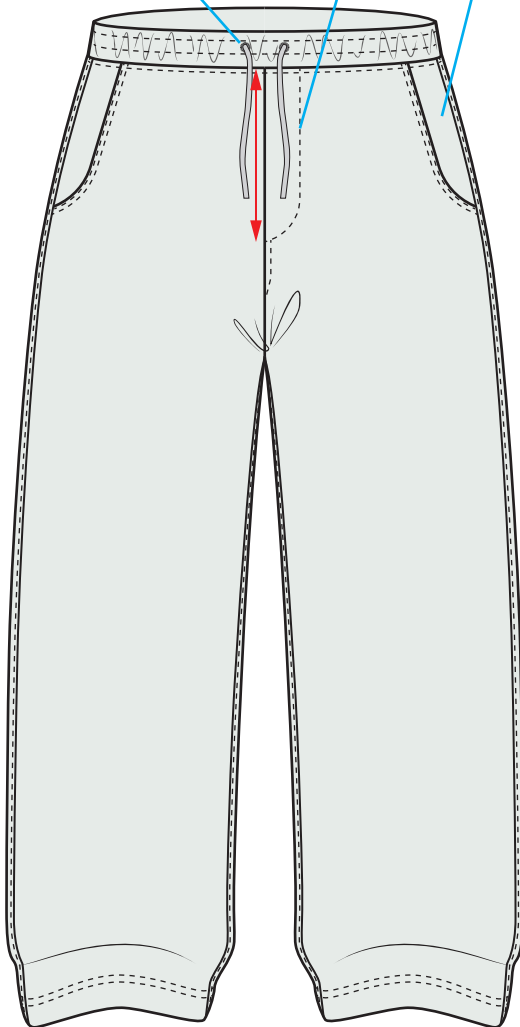


COLOURWAY #3			COLOURWAY #4	
COLOUR / CODE	Quiet Shade 18-4006 TCX 601		COLOUR / CODE	n/a
SAMPLE SIZE	n/a		SAMPLE SIZE	n/a
SAMPLE QUANTITY	n/a		SAMPLE QUANTITY	n/a

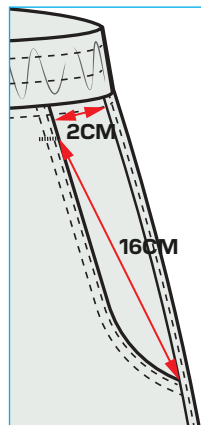
4CM DEEP SET-IN ELASTICATED WAISTBAND.  
ROUND EMBROIDERED EYELETS AT  
WAISTBAND FOR CORD EXIT.



FAUX FLY - DOES  
NOT OPEN.  
17CM LONG.

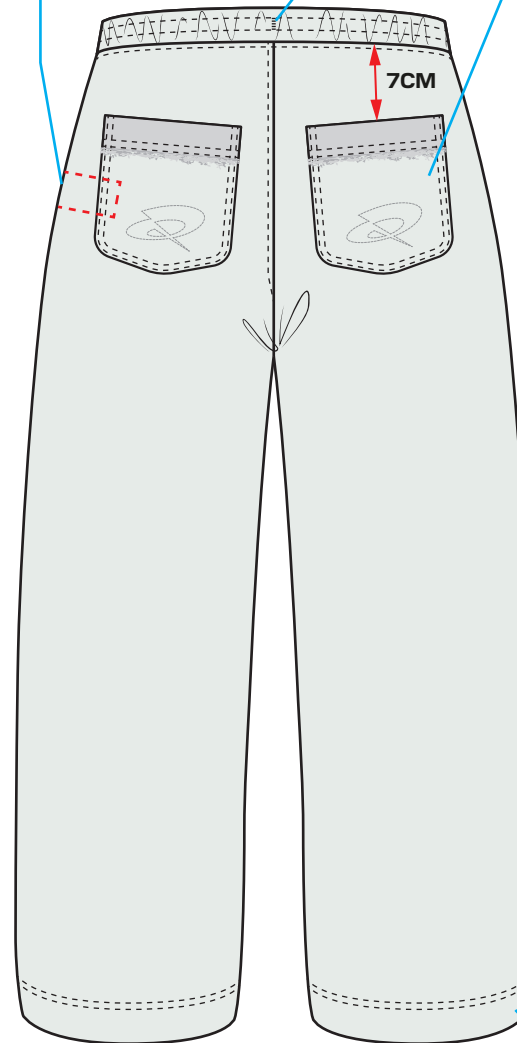


HAND POCKET WITH  
CURVED BOTTOM. TWIN  
STITCHING AT EDGE.

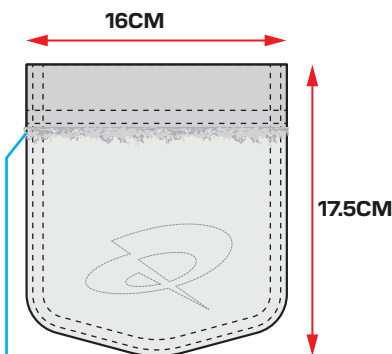


WASHCARE LABEL INSERTED AT  
INTERNAL LHS SIDESEAM, 10CM  
DOWN FROM WAISTBAND SEAM.

BARTACK AT CB TO  
HOLD CORD IN PLACE



SELF FABRIC BACK POCKET APPLIED  
WITH TWIN STITCHING AROUND EDGE.  
3CM INVERTED HEM, WITH RAW EDGE  
FINISH (SEE IMAGE BELOW).



CORD EXTENDS 35CM WHEN  
WAIST IS RELAXED.  
PLEASE SOURCE 1CM WIDE,  
THICK FLAT CORD. FINISHED  
WITH BARTACK. DTM / TONAL



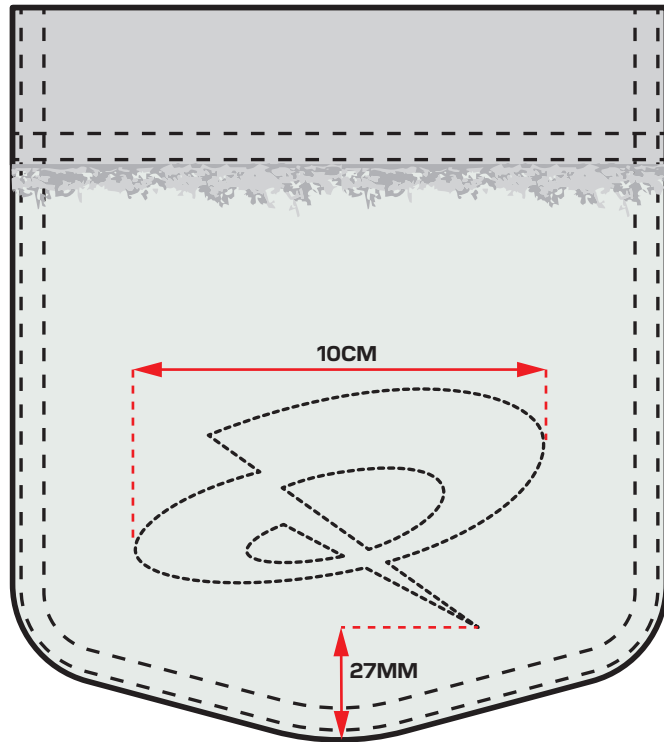
4CM DEEP HEM WITH  
TWIN NEEDLE  
COVERSTITCH FINISH

**CHAINSTITCH EMBROIDERY**

CHAINSTITCH EMBROIDERY TO BOTH BACK POCKETS - POSITIONED CENTRALLY.  
USE TONAL COLOUR THREAD.

**PLEASE ADVISE IF THIS IS THE BEST TECHNIQUE FOR THIS DETAILED/FINE ARTWORK.**

SCALED ARTWORK FILE PROVIDED SEPARATELY.

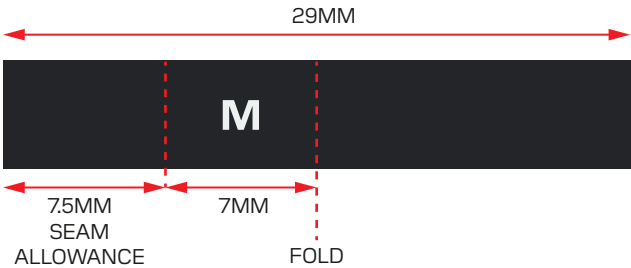
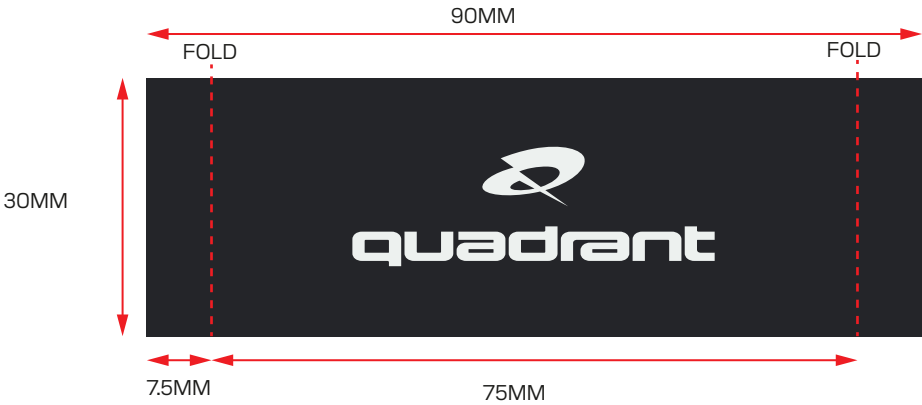
**EMBROIDERY REFERENCE**

BACK NECK LABEL

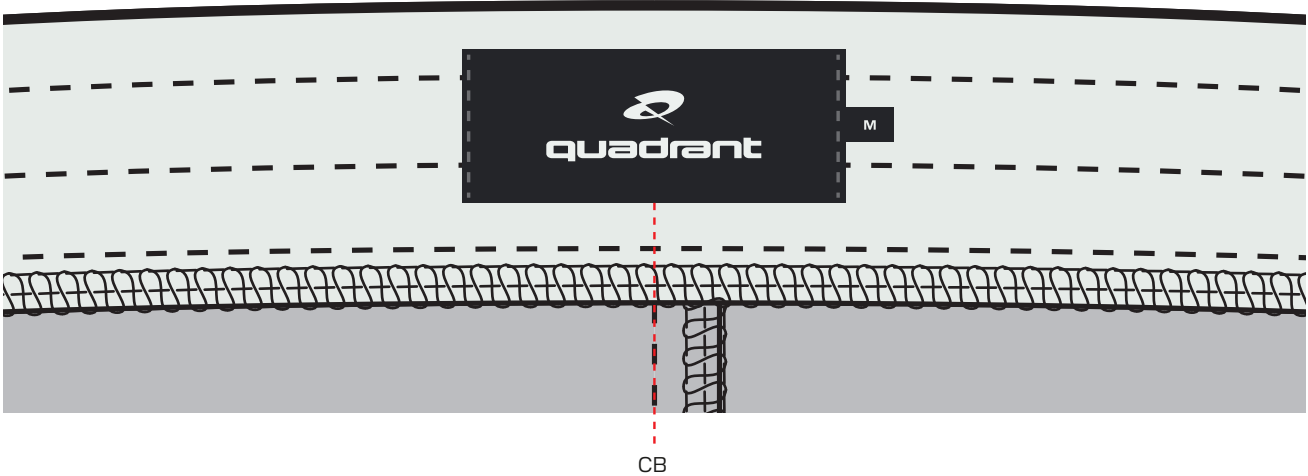
BACK NECK LABEL PLACED CENTRALLY TO INTERNAL CB WAISTBAND.

FOLDED SIZE PIP INSERTED UNDERNEATH LABEL AT RHS, 7.5MM SEAM ALLOWANCE.

LABEL STITCHED DOWN AT EACH SIDE, THREAD COLOUR TO MATCH ON LABEL AND EXTERNAL OF GARMENT.



INTERNAL VIEW OF BACK WAISTBAND





**GARMENT WASH / DYE**

PLEASE SEE DESIRED EFFECT FOR EACH COLOURWAY BELOW

**Open Air 15-3922 TCX / 302**

WASHED FINISH - STILL QUITE CLOSE TO PANTONE



**QUIET SHADE 18-4006 TCX 601**

FADE OUT (OR SIMILAR) - ORIGINAL COLOUR SHOULD BE DARKER TO ACHIEVE SIMILAR TO PANTONE

