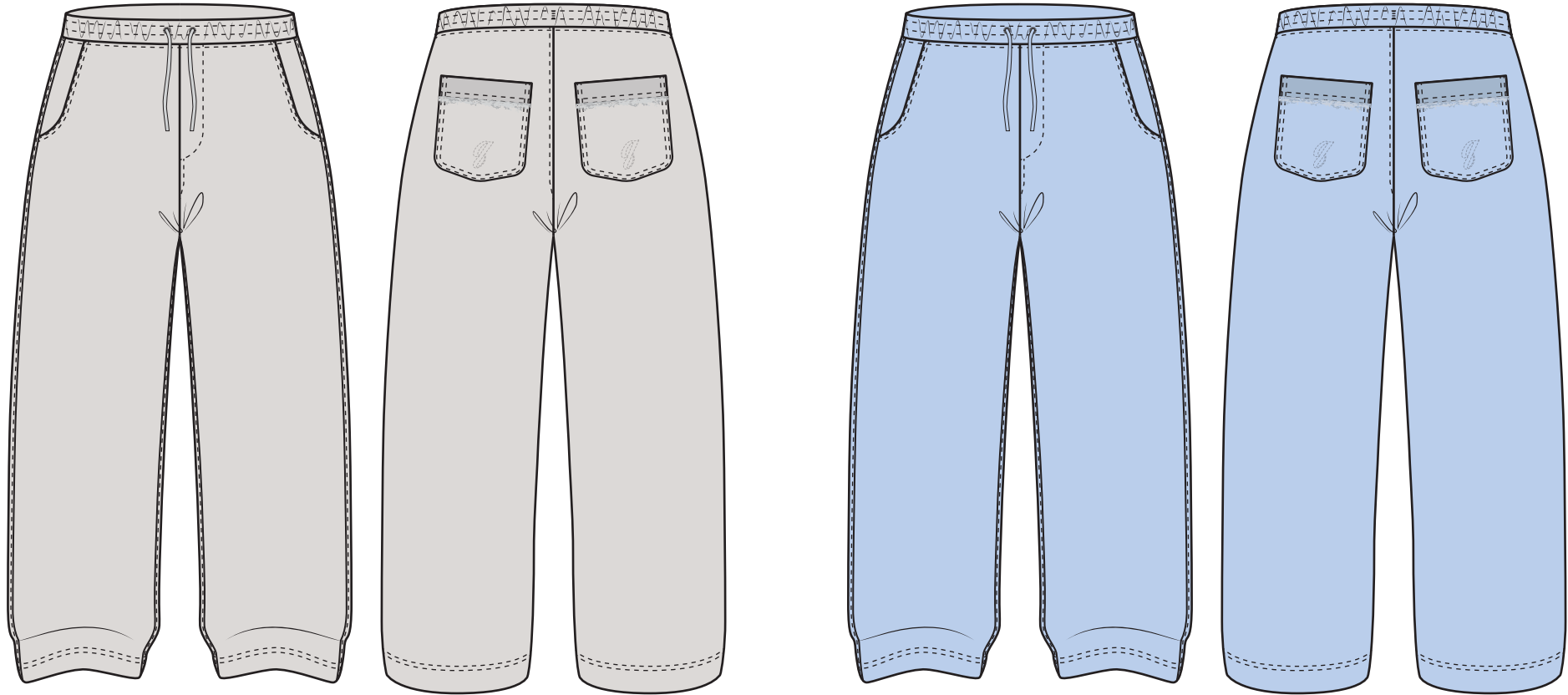


SEASON / DROP	SS25 / CAPSULE 1 / JUNE	STATUS	PROTO 1
BLOCK	JOGGER (NEW)	SIZE RANGE	XS - XXL
FABRIC	COTTON LOOPBACK SWEAT 570 - 1601	AUTHOR	MEES VISSER
MANUFACTURER	n/a	CREATED - UPDATED	21 / 03 / 25 - / /

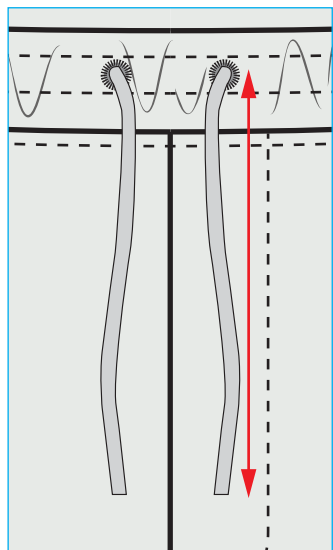


COLOURWAY #1		COLOURWAY #2	
COLOUR / CODE	White Sand 13-0002 TCX 002	COLOUR / CODE	Open Air 15-3922 TCX 302
SAMPLE SIZE	n/a	SAMPLE SIZE	n/a
SAMPLE QUANTITY	n/a	SAMPLE QUANTITY	n/a

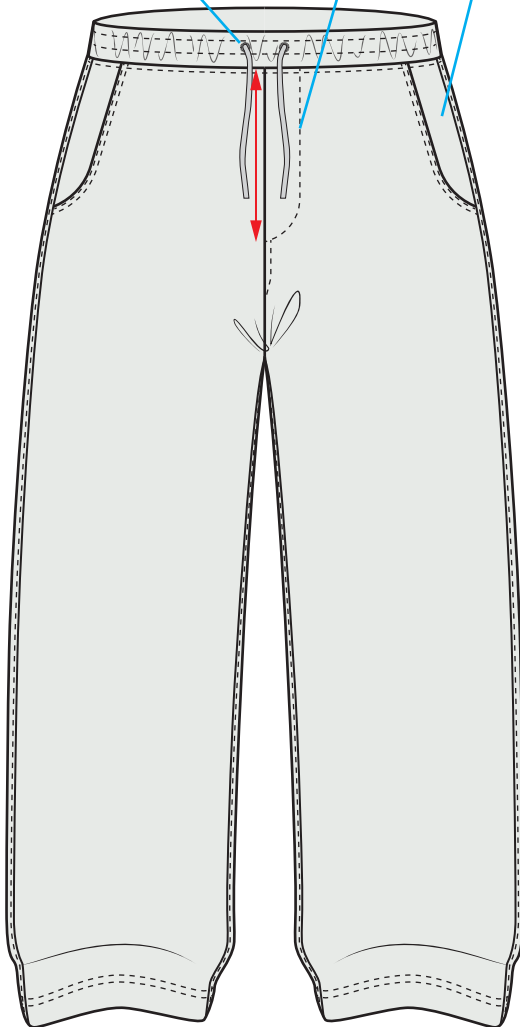


COLOURWAY #3			COLOURWAY #4	
COLOUR / CODE	Quiet Shade 18-4006 TCX 601		COLOUR / CODE	n/a
SAMPLE SIZE	n/a		SAMPLE SIZE	n/a
SAMPLE QUANTITY	n/a		SAMPLE QUANTITY	n/a

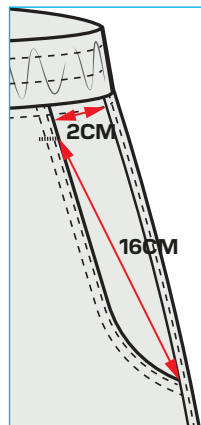
4CM DEEP SET-IN ELASTICATED WAISTBAND. ROUND EMBROIDERED EYELETS AT WAISTBAND FOR CORD EXIT.



FAUX FLY - DOES NOT OPEN. 17CM LONG.

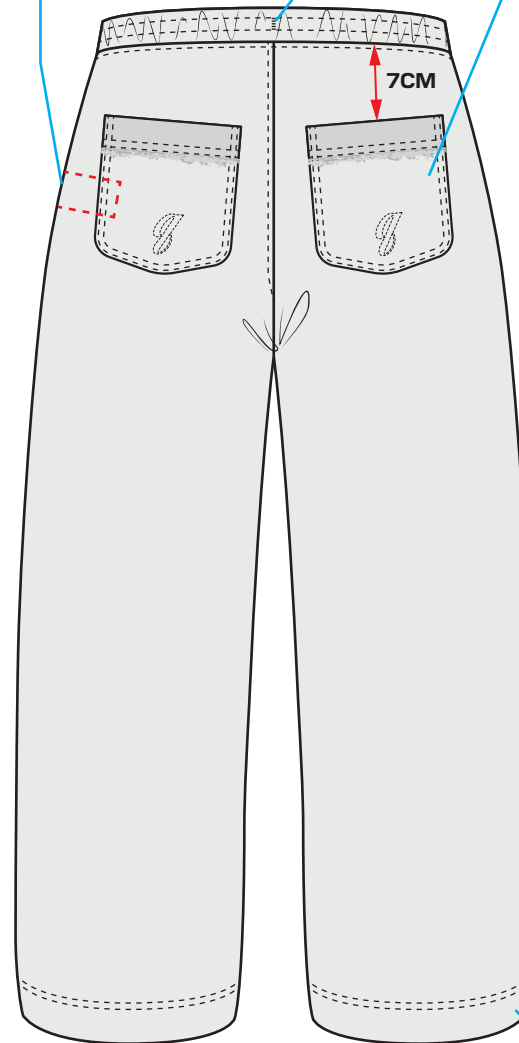


HAND POCKET WITH CURVED BOTTOM. TWIN STITCHING AT EDGE.

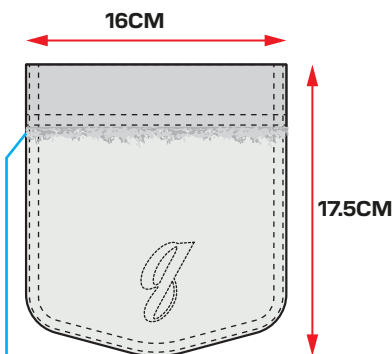


WASHCARE LABEL INSERTED AT INTERNAL LHS SIDESEAM, 10CM DOWN FROM WAISTBAND SEAM.

BARTACK AT CB TO HOLD CORD IN PLACE



SELF FABRIC BACK POCKET APPLIED WITH TWIN STITCHING AROUND EDGE. 3CM INVERTED HEM, WITH RAW EDGE FINISH (SEE IMAGE BELOW).



CORD EXTENDS 35CM WHEN WAIST IS RELAXED. PLEASE SOURCE 1CM WIDE, THICK FLAT CORD. FINISHED WITH BARTACK. DTM / TONAL



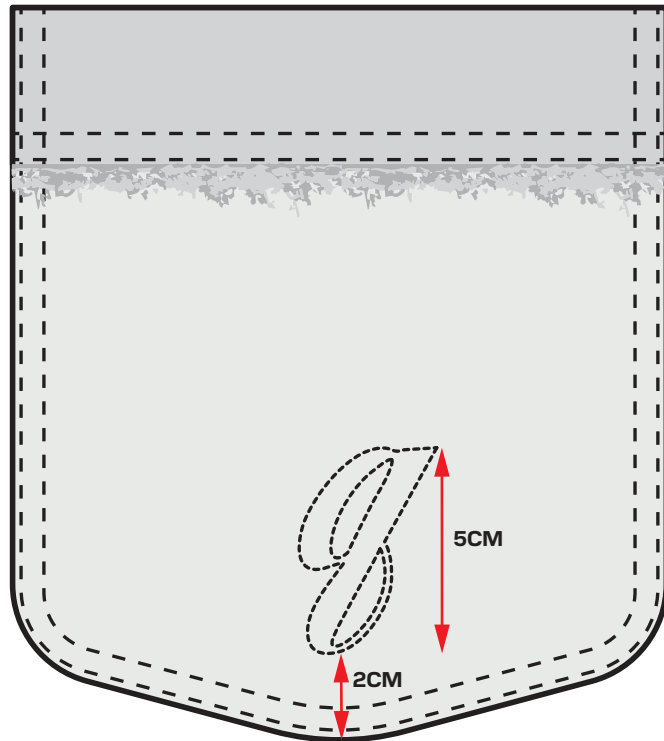
4CM DEEP HEM WITH TWIN NEEDLE COVERSTITCH FINISH

# CHAINSTITCH EMBROIDERY

CHAINSTITCH EMBROIDERY TO BOTH BACK POCKETS - POSITIONED CENTRALLY.  
USE TONAL COLOUR THREAD.

**PLEASE ADVISE IF THIS IS THE BEST TECHNIQUE FOR THIS DETAILED/FINE ARTWORK.**

SCALED ARTWORK FILE PROVIDED SEPARATELY.



## EMBROIDERY REFERENCE

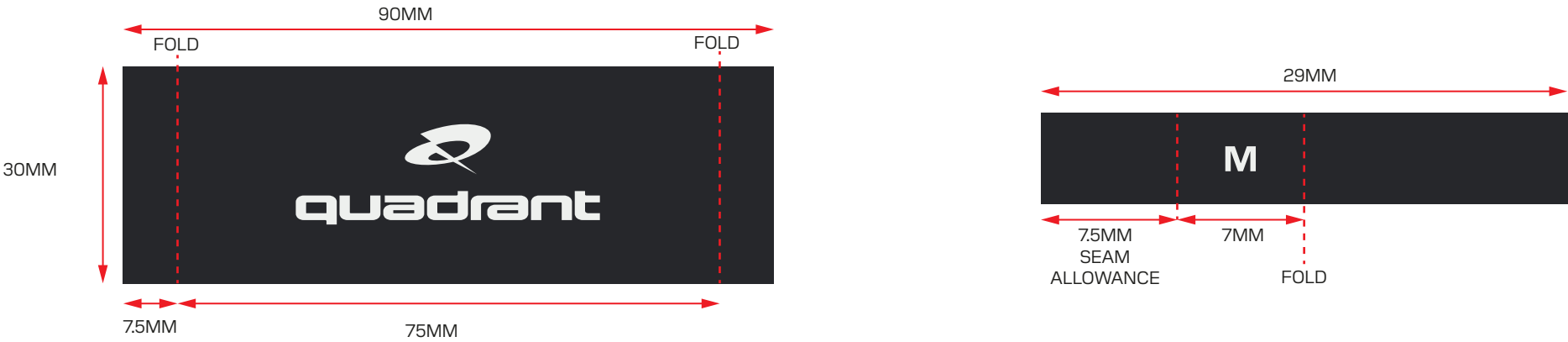


BACK NECK LABEL

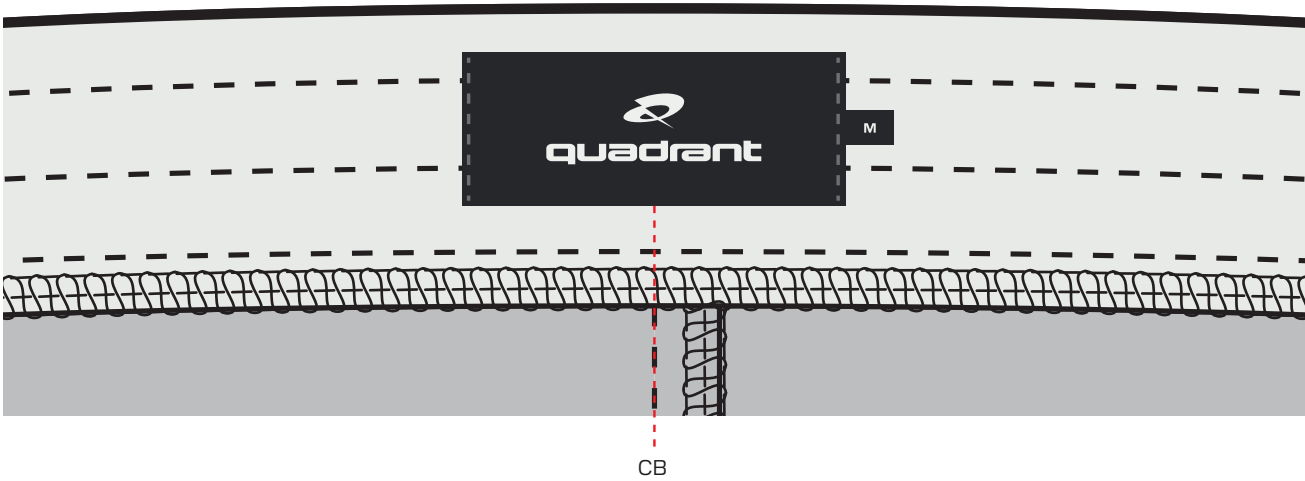
BACK NECK LABEL PLACED CENTRALLY TO INTERNAL CB WAISTBAND.

FOLDED SIZE PIP INSERTED UNDERNEATH LABEL AT RHS, 7.5MM SEAM ALLOWANCE.

LABEL STITCHED DOWN AT EACH SIDE, THREAD COLOUR TO MATCH ON LABEL AND EXTERNAL OF GARMENT.



INTERNAL VIEW OF BACK WAISTBAND





## GARMENT WASH

ENZYME WASH GARMENT TO ACHIEVE LIGHT WASHED EFFECT.  
AIM FOR PANTONE COLOUR POST-WASH.

ONLY APPLIES TO COLOURWAY #2 - EBONY

