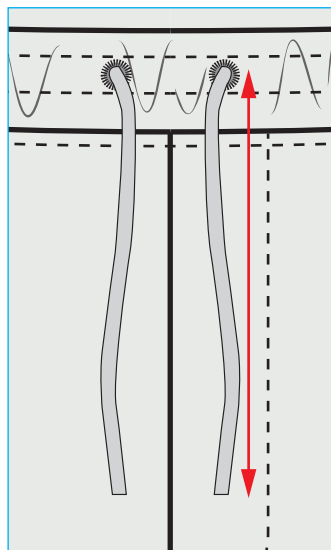


quadrant		20240001	Q JOGGER SHORTS	OVERVIEW	PAGE 1 / 5
SEASON / DROP	SS25 / CAPSULE 1 / JUNE		STATUS	PROTO 1	
BLOCK	JOGGER SHORTS (NEW)		SIZE RANGE	XS - XXL	
FABRIC	COTTON LOOPBACK SWEAT 570 - 1601		AUTHOR	MEES VISSER	
MANUFACTURER	n/a		CREATED - UPDATED	21 / 03 / 25 - / /	



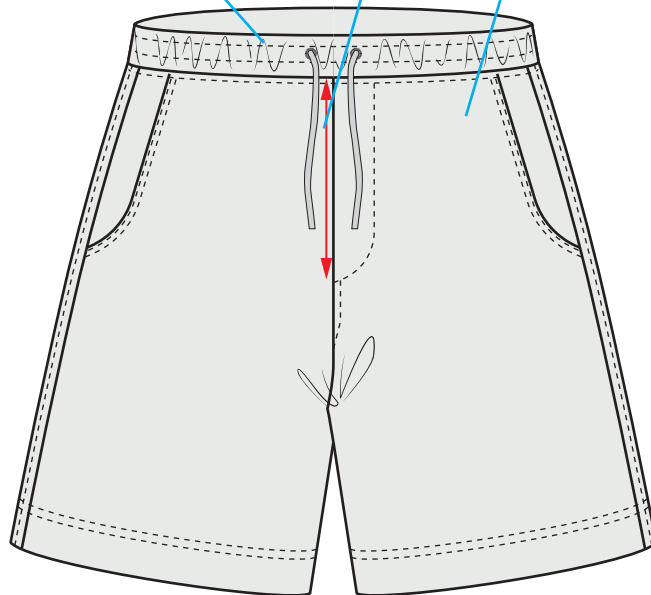
COLOURWAY #1			COLOURWAY #2		
COLOUR / CODE	Hunter Green 19-5511 TCX 401		COLOUR / CODE	Quiet Shade 18-4006 TCX 601	
SAMPLE SIZE	n/a		SAMPLE SIZE	n/a	
SAMPLE QUANTITY	n/a		SAMPLE QUANTITY	n/a	

4CM DEEP SET-IN ELASTICATED WAISTBAND.
ROUND EMBROIDERED EYELETS AT
WAISTBAND FOR CORD EXIT.

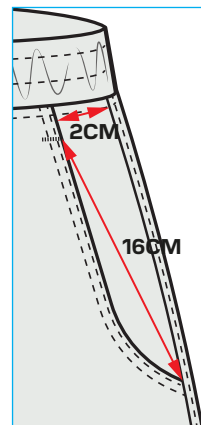


CORD EXTENDS 35CM WHEN
WAIST IS RELAXED.
PLEASE SOURCE 1CM WIDE,
THICK FLAT CORD. FINISHED
WITH BARTACK. DTM / TONAL

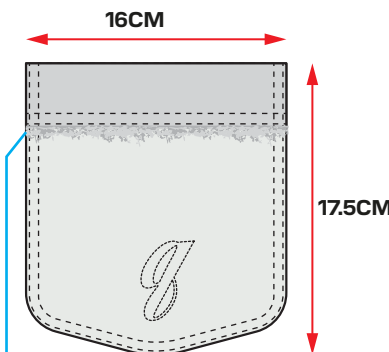
FAUX FLY - DOES
NOT OPEN.
17CM LONG.



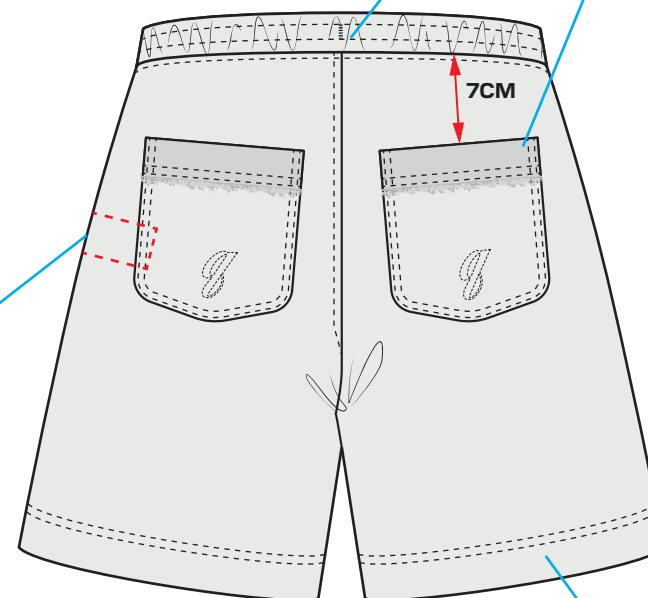
HAND POCKET WITH
CURVED BOTTOM. TWIN
STITCHING AT EDGE.



SELF FABRIC BACK POCKET APPLIED
WITH TWIN STITCHING AROUND EDGE.
3CM INVERTED HEM, WITH RAW EDGE
FINISH (SEE IMAGE BELOW).



BARTACK AT CB TO
HOLD CORD IN PLACE



WASHCARE LABEL INSERTED AT
INTERNAL LHS SIDESEAM, 10CM
DOWN FROM WAISTBAND SEAM.



3CM DEEP HEM WITH
TWIN NEEDLE
COVERSTITCH FINISH

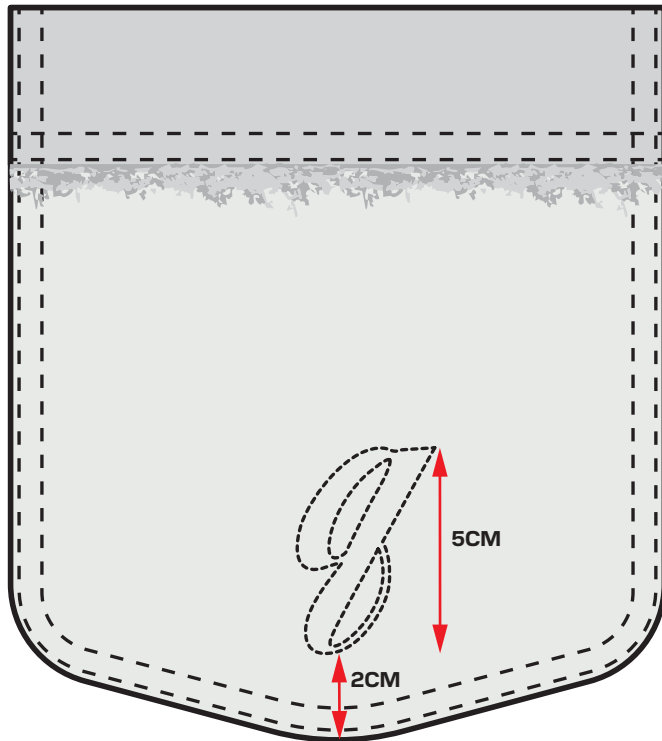


CHAINSTITCH EMBROIDERY

CHAINSTITCH EMBROIDERY TO BOTH BACK POCKETS - POSITIONED CENTRALLY.
USE TONAL COLOUR THREAD.

PLEASE ADVISE IF THIS IS THE BEST TECHNIQUE FOR THIS DETAILED/FINE ARTWORK.

SCALED ARTWORK FILE PROVIDED SEPARATELY.



EMBROIDERY REFERENCE

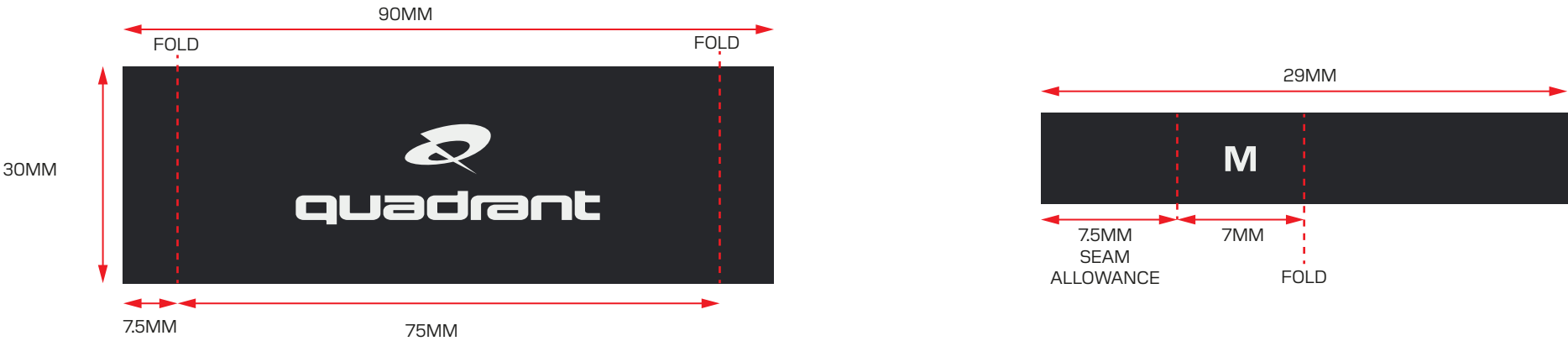


BACK NECK LABEL

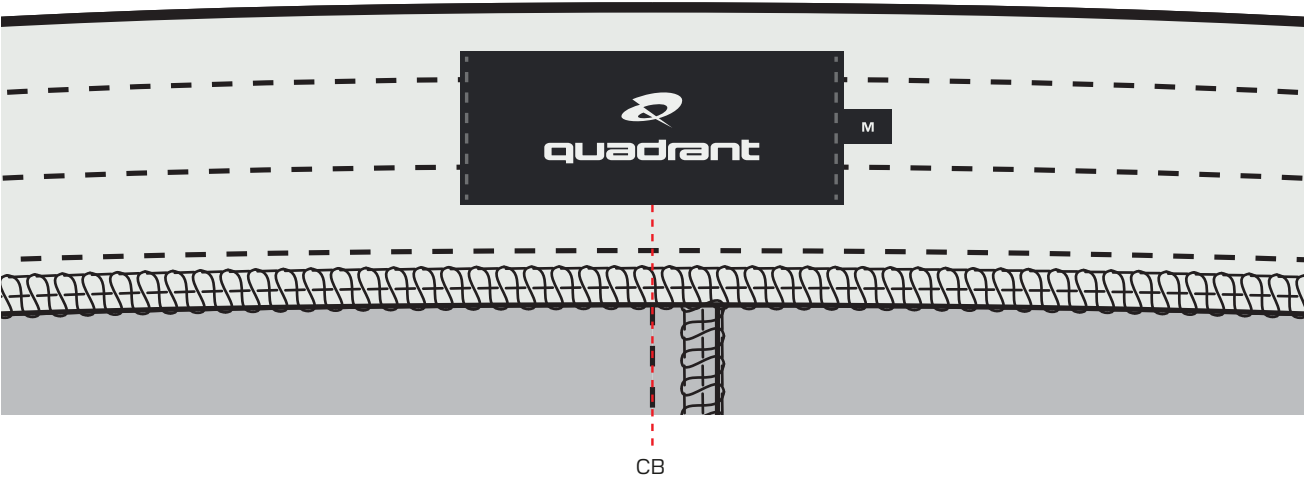
BACK NECK LABEL PLACED CENTRALLY TO INTERNAL CB WAISTBAND.

FOLDED SIZE PIP INSERTED UNDERNEATH LABEL AT RHS, 7.5MM SEAM ALLOWANCE.

LABEL STITCHED DOWN AT EACH SIDE, THREAD COLOUR TO MATCH ON LABEL AND EXTERNAL OF GARMENT.



INTERNAL VIEW OF BACK WAISTBAND



GARMENT WASH

ENZYME WASH GARMENT TO ACHIEVE LIGHT WASHED EFFECT.
AIM FOR PANTONE COLOUR POST-WASH.

ONLY APPLIES TO COLOURWAY #2 - EBONY

