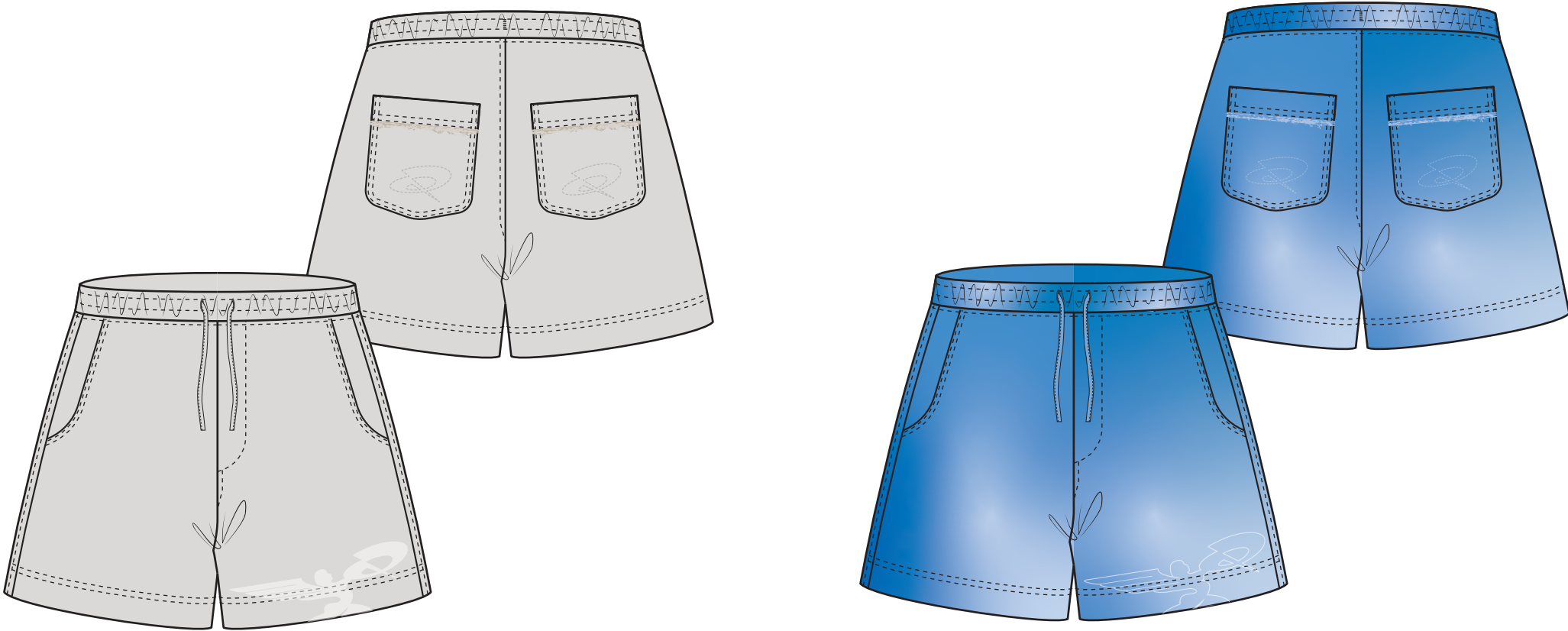


SEASON / DROP	SS25 / CAPSULE 1 / JUNE	STATUS	PROTO 1
BLOCK	JOGGER SHORTS (NEW)	SIZE RANGE	XS - XXL
FABRIC	COTTON LOOPBACK SWEAT 570 - 1601	AUTHOR	MEES VISSER
MANUFACTURER	n/a	CREATED - UPDATED	21 / 03 / 25 - / /



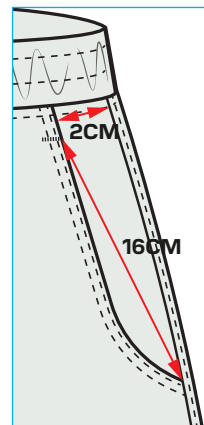
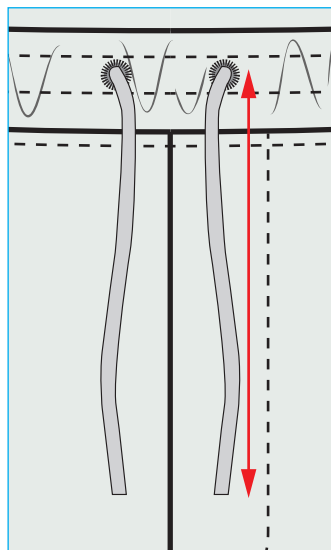
COLOURWAY #1		COLOURWAY #2	
COLOUR / CODE	White Sand 13-0002 TCX 002	COLOUR / CODE	Open Air 15-3922 TCX 302
SAMPLE SIZE	n/a	SAMPLE SIZE	n/a
SAMPLE QUANTITY	n/a	SAMPLE QUANTITY	n/a

COLOURWAY #3		COLOURWAY #4	
COLOUR / CODE	Quiet Shade 18-4006 TCX 601	COLOUR / CODE	n/a
SAMPLE SIZE	n/a	SAMPLE SIZE	n/a
SAMPLE QUANTITY	n/a	SAMPLE QUANTITY	n/a

4CM DEEP SET-IN ELASTICATED WAISTBAND.
ROUND EMBROIDERED EYELETS AT
WAISTBAND FOR CORD EXIT.

FAUX FLY - DOES
NOT OPEN.
17CM LONG.

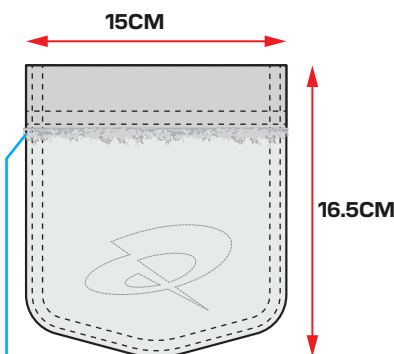
HAND POCKET WITH
CURVED BOTTOM. TWIN
STITCHING AT EDGE.



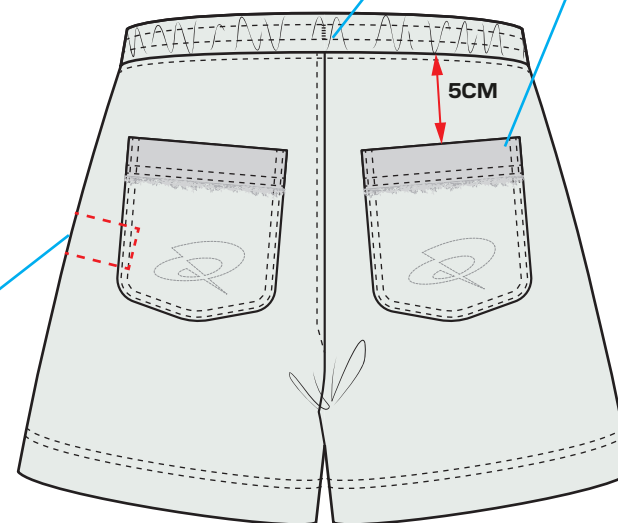
CORD EXTENDS 35CM WHEN
WAIST IS RELAXED.
PLEASE SOURCE 1CM WIDE,
THICK FLAT CORD. FINISHED
WITH BARTACK. DTM / TONAL

BARTACK AT CB TO
HOLD CORD IN PLACE

SELF FABRIC BACK POCKET APPLIED
WITH TWIN STITCHING AROUND EDGE.
3CM INVERTED HEM, WITH RAW EDGE
FINISH (SEE IMAGE BELOW).



WASHCARE LABEL INSERTED AT
INTERNAL LHS SIDESEAM, 10CM
DOWN FROM WAISTBAND SEAM.



3CM DEEP HEM WITH
TWIN NEEDLE
COVERSTITCH FINISH

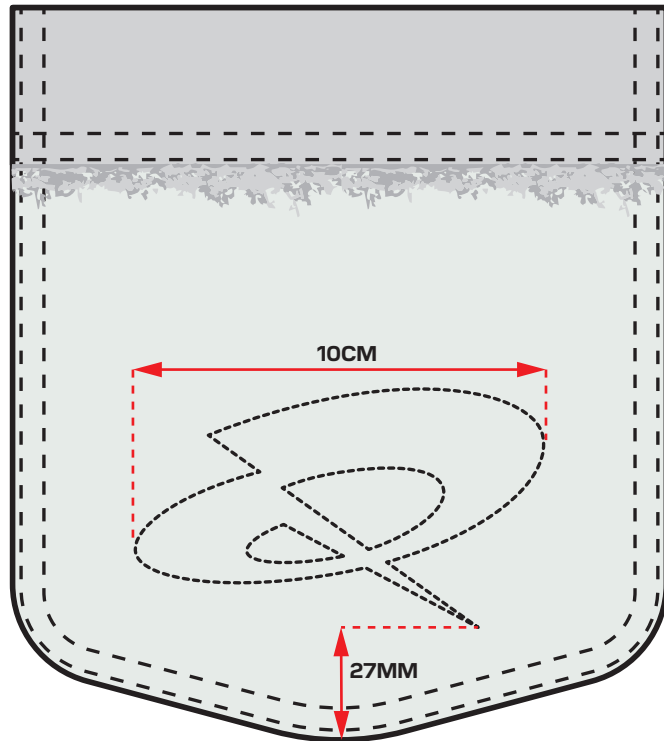


CHAINSTITCH EMBROIDERY

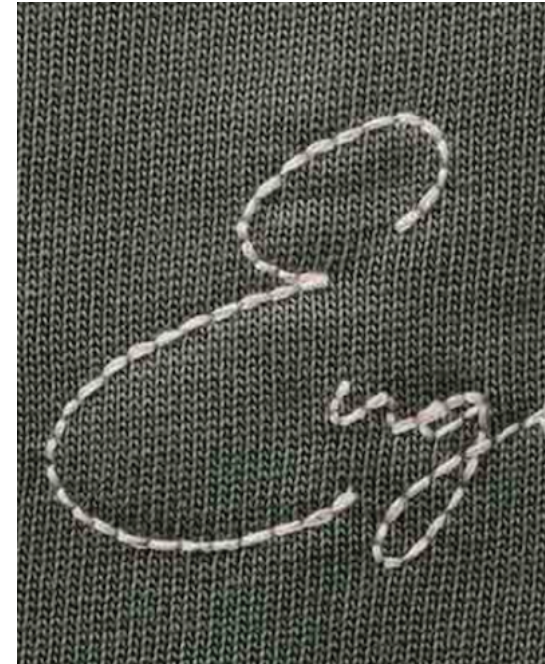
CHAINSTITCH EMBROIDERY TO BOTH BACK POCKETS - POSITIONED CENTRALLY.
USE TONAL COLOUR THREAD.

PLEASE ADVISE IF THIS IS THE BEST TECHNIQUE FOR THIS DETAILED/FINE ARTWORK.

SCALED ARTWORK FILE PROVIDED SEPARATELY.



EMBROIDERY REFERENCE



OPTION 1: FRONT SCREENPRINT

THICK MATTE SINGLE COLOUR SCREENPRINT TO CHEST.
PRINT APPLIED BEFORE STITCHING POCKET, BOTTOM OF ARTWORK HIDDEN AS SHOWN BELOW.

SCALED ARTWORK FILE PROVIDED SEPARATELY.



FABRIC BASE COLOUR

WHITE SAND
13-0002 TCX



PRINT COLOUR

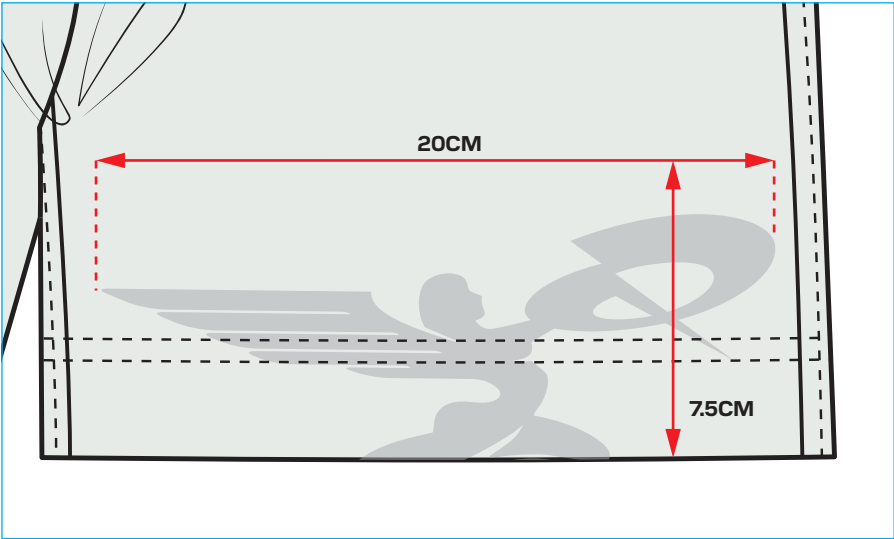
BLANC DE BLANC
11-4800 TCX

OPEN AIR
15-3922 TCX



NANTUCKET BREEZE
14-4005 TCX

PRINT REFERENCES

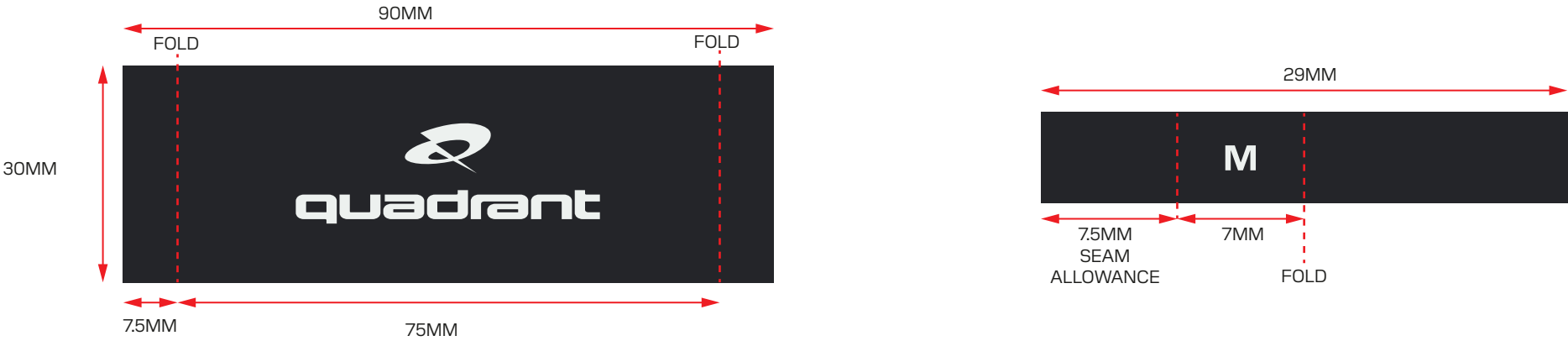


BACK NECK LABEL

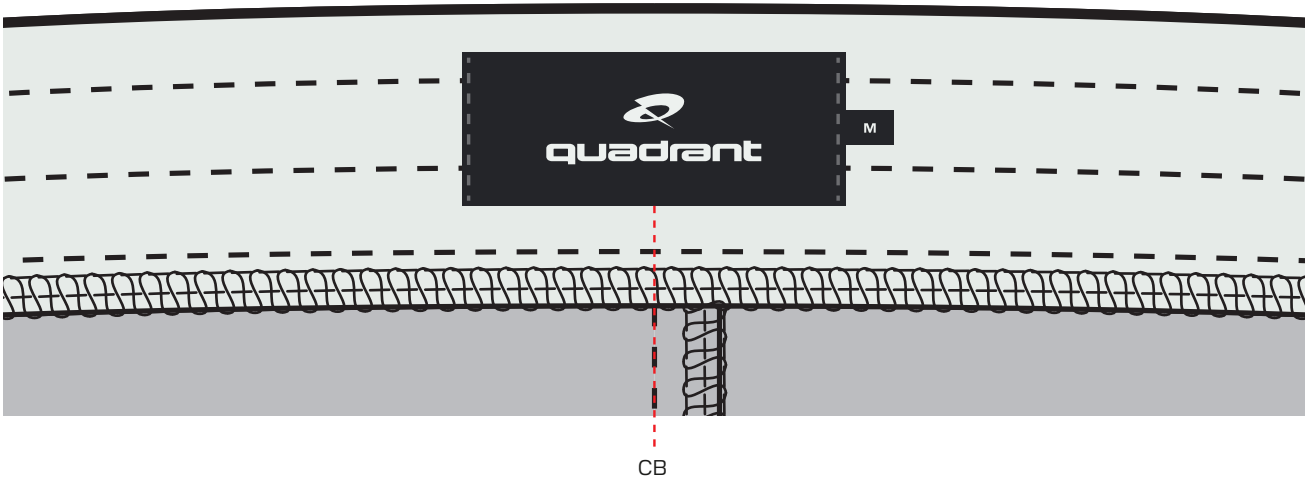
BACK NECK LABEL PLACED CENTRALLY TO INTERNAL CB WAISTBAND.

FOLDED SIZE PIP INSERTED UNDERNEATH LABEL AT RHS, 7.5MM SEAM ALLOWANCE.

LABEL STITCHED DOWN AT EACH SIDE, THREAD COLOUR TO MATCH ON LABEL AND EXTERNAL OF GARMENT.



INTERNAL VIEW OF BACK WAISTBAND



GARMENT DYE / WASH

White Sand 13-0002 TCX 002
WASH OR DYDE TO ACHIEVE SIMILAR HANDFEEL AND
LOOK TO OTHER COLOURWAY

OPEN AIR 15-3922 TCX 302
SIMILAR DYE OR FINISH TECHNIQUE AS PER BELOW.
LIGHT AREAS SHOULD ROUGHLY REFLECT PANTONE COLOUR.
RANDOM PLACEMENT



20240001	Q JOGGER SHORTS	GARMENT WASH	/ 5
----------	-----------------	--------------	-----