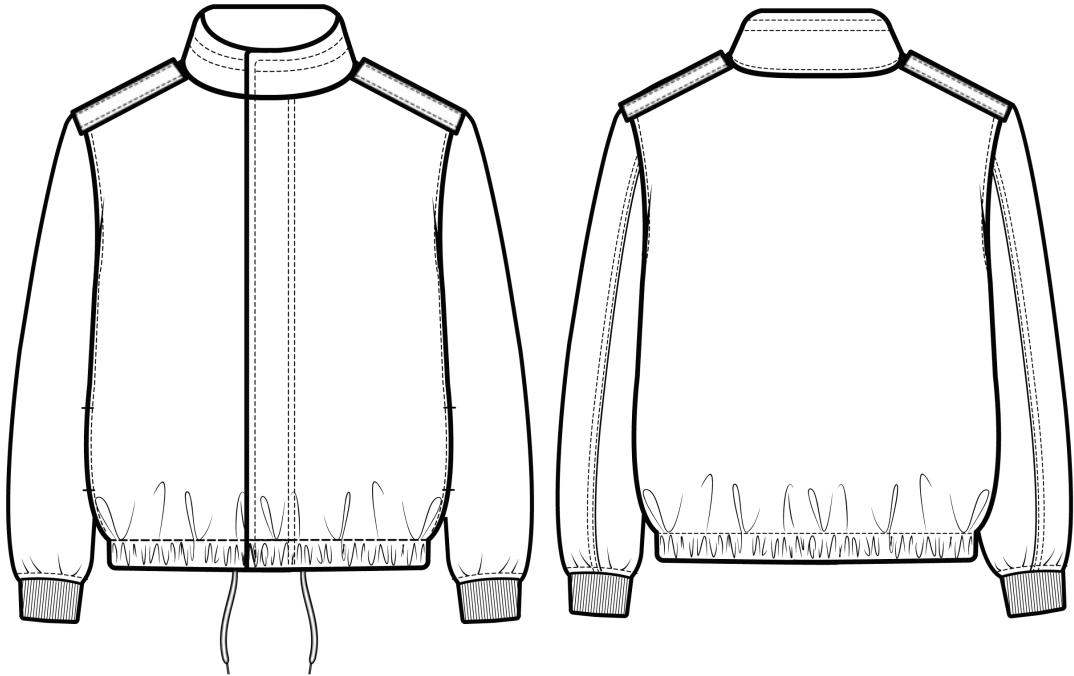


# ENCHANTÉ

STYLE #	EN1125MJ01	STYLE NAME	COTTON CANVAS JACKET	CATEGORY	OUTERWEAR
SEASON	SPEEDWAY 2025	DELIVERY	11/15 XF	FABRIC DESCRIPTION	COTTON CANVAS
FACTORY	UA	STAGE	DEVELOPMENT	FABRIC CONTENT	
SIZE RANGE	XS-XXL	SAMPLE SIZE	LARGE	TP BY:	GD



**\*PLS SOURCE ALL QUALITIES FOLLOWING  
REFERENCE SAMPLE\***

**SELF:** COTTON CANVAS

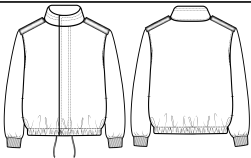
**LINING:** COTTON VOILE

**COMBO:** COTTON / SPANDEX 2X2 RIB

**COVER REMARKS:**

6.25.25 TP LAUNCHED - FTY TO GRADE UP SPECS TO SIZE LARGE AND SUBMIT 1X PROTO IN SIZE LARGE

ENCHANTÉ

STYLE #	EN1125MJ01	STYLE NAME	COTTON CANVAS JACKET	CATEGORY	OUTERWEAR	SKETCH 
SEASON	SPEEDWAY 2025	DELIVERY	11/15 XF	FABRIC DESCRIPTION	COTTON CANVAS	
FACTORY	UA	STAGE	DEVELOPMENT	FABRIC CONTENT		
SIZE RANGE	XS-XXL	SAMPLE SIZE	LARGE	TP BY:	GD	

CONSTRUCTION

May cá vai, điều 1k 1/4" nhưng hình

Điều 1k 1/4" trên tất cả đường may

ALL OVER 1/4" TOPSTITCHING AT SEAMS

EPAULETTES AT SHOULDER (SEAMED INTO COLLAR AS REFERENCE SAMPLE)

Điều 2k ở cạnh trên

DOUBLE NEEDLE TOPSTITCH AT COLLAR

Nẹp thân trước ở thân trước có nút bấm

1pc ở cổ

3pcs ở thân

1 ở bo lai

TURNBACK STORM CF PLACKET WITH CONCEALED SNAPS (1X COLLAR, 3X BODY, 1X WB - MARKED IN RED)

\*SNAPS SHOULD NOT BE VISIBLE AT EXTERIOR

#5 METAL ZIPPER AT CF

Dây kéo kim loại răng 5 ở giữa trước

DOUBLE NEEDLE TOPSTITCH AT INSIDE EDGE OF PLACKET

PITCHED FORWARD SIDE SEAM WITH POCKET

1/4" BARTACK AT TOP / BOTTOM EDGE OF POCKET OPENING

WAIST TUNNEL: ENCASED ELASTIC AND INTERIOR COTTON DRAWSTRINGS WITH METAL AGLET

2X2 RIB TRIM AT SLEEVE CUFF

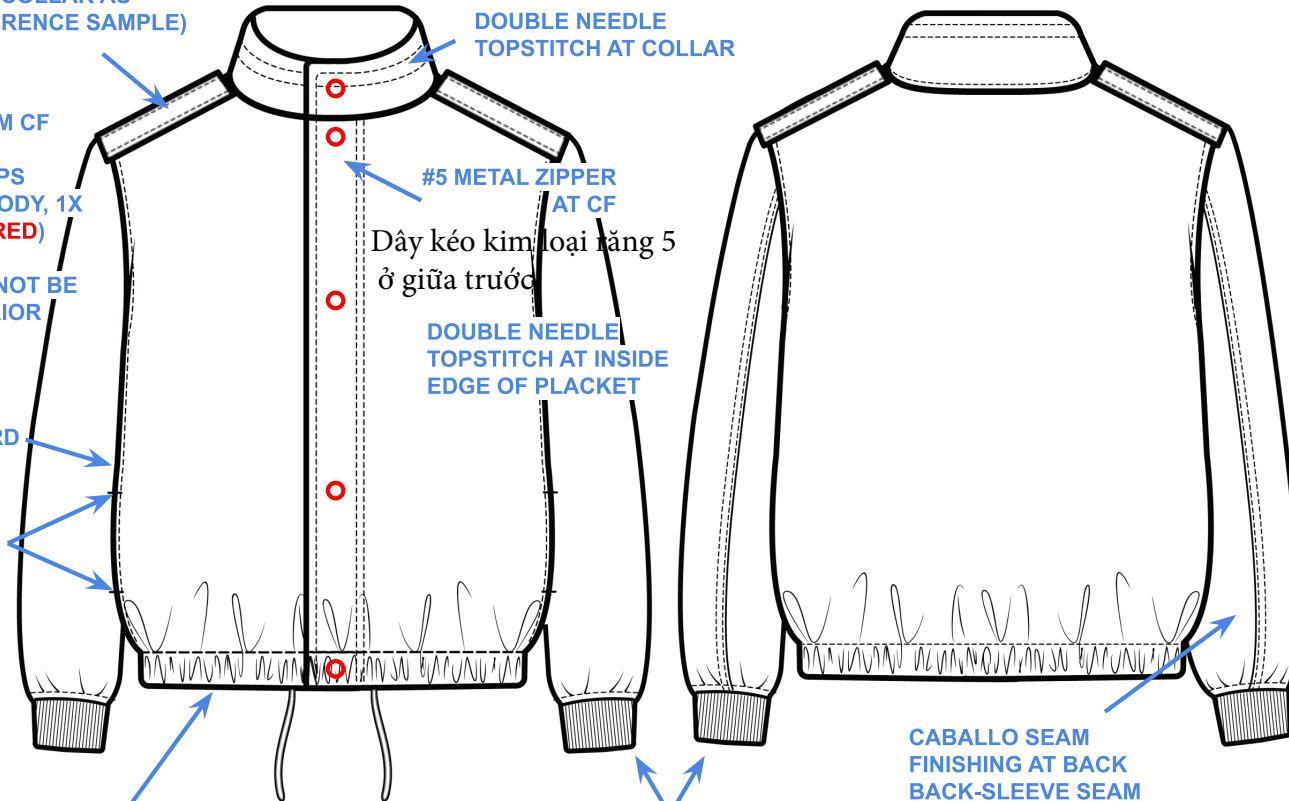
bo 2x2 ở tay

CABALLO SEAM FINISHING AT BACK BACK-SLEEVE SEAM

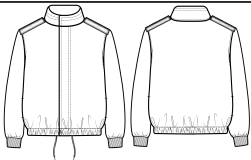
May cuộn sườn tay điều 2k ở thân sau

Bo lai bọc thun, dây luồn bên trong

Điều 2k 1/4" tại nẹp trước



ENCHANTÉ

STYLE #	EN1125MJ01	STYLE NAME	COTTON CANVAS JACKET	CATEGORY	OUTERWEAR	SKETCH 
SEASON	SPEEDWAY 2025	DELIVERY	11/15 XF	FABRIC DESCRIPTION	COTTON CANVAS	
FACTORY	UA	STAGE	DEVELOPMENT	FABRIC CONTENT		
SIZE RANGE	XS-XXL	SAMPLE SIZE	LARGE	TP BY:	GD	

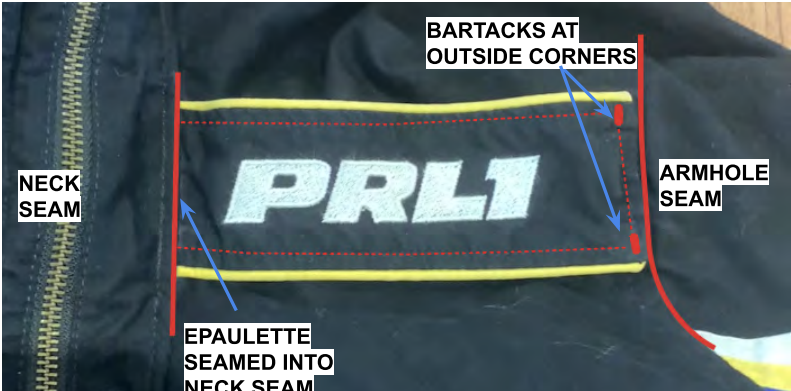
REFERENCE



Cấu trúc nếp thân trước như hình



Chỗm sườn về thân trước  
may tui sườn + đóng bộ miệng túi.



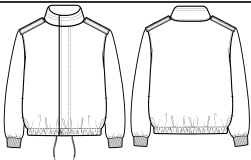
Cấu trúc cá vai như hình: Đánh bộ ở đầu



Cấu trúc cá vai như hình



# ENCHANTÉ

STYLE #	EN1125MJ01	STYLE NAME	COTTON CANVAS JACKET	CATEGORY	OUTERWEAR	SKETCH 
SEASON	SPEEDWAY 2025	DELIVERY	11/15 XF	FABRIC DESCRIPTION	COTTON CANVAS	
FACTORY	UA	STAGE	DEVELOPMENT	FABRIC CONTENT		
SIZE RANGE	XS-XXL	SAMPLE SIZE	LARGE	TP BY:	GD	

REFERENCE P. 2

FOLLOW FOR TOPSTITCHING AT COLLAR



Tham khảo điều lá cổ



TUNNEL AT WAISTBAND HEM + DRAWSTRING

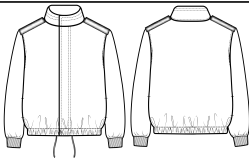
Tham khảo cấu trúc dây luồn ở lai

CABALLO SEAM FINISHING AT BACK SLEEVE



Tham khảo đường may cuộn sườn ở tay sau

ENCHANTÉ

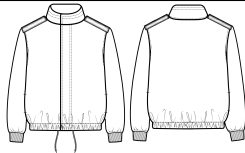
STYLE #	EN1125MJ01	STYLE NAME	COTTON CANVAS JACKET	CATEGORY	OUTERWEAR	SKETCH 
SEASON	SPEEDWAY 2025	DELIVERY	11/15 XF	FABRIC DESCRIPTION	COTTON CANVAS	
FACTORY	UA	STAGE	DEVELOPMENT	FABRIC CONTENT		
SIZE RANGE	XS-XXL	SAMPLE SIZE	LARGE	TP BY:	GD	



PROTO DIRECTION (6.25.25)

- 1.PLEASE SOURCE FABRIC AS BELOW, IGNORE ALL EMBROIDERY, PATCHES AND STRIPE DECORATIONS
  - PLEASE SOURCE COTTON CANVAS OUTERWEAR, 2X2 RIB TRIM AND COTTON VOILE LINING
  - PLEASE SOURCE COTTON DRAWCORD WITH METAL AGLET (IF POSSIBLE)
- 2. SPECS ARE SIZE **MEDIUM**, **FACTORY TO GRADE SPECS TO SIZE LARGE** FOR SAMPLE
- 3. PLEASE REVIEW AND HELP TO SUBMIT 1X PROTO IN SIZE LARGE, AVAILABLE COLOR OK

ENCHANTÉ

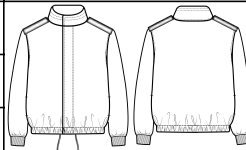
STYLE #	EN1125MJ01	STYLE NAME	COTTON CANVAS JACKET	CATEGORY	OUTERWEAR	SKETCH 
SEASON	SPEEDWAY 2025	DELIVERY	11/15 XF	FABRIC DESCRIPTION	COTTON CANVAS	
FACTORY	UA	STAGE	DEVELOPMENT	FABRIC CONTENT		
SIZE RANGE	XS-XXL	SAMPLE SIZE	LARGE	TP BY:	GD	

PROTO -  
SIZE M  
STAGE SPECS

Lưu ý: Thông số là size M , PKT tự nhảy size L để làm mẫu

POM	DESCRIPTION		TOL +/-	REQUEST				
1	FRONT BODY LENGTH FROM HPS TO HEM	Dài thân trước từ cao vai đến lai	1/2	23 1/4				
2	BACK BODY LENGTH FROM HPS TO HEM	Dài thân sau từ cao vai đến lai	1/2	23 1/2				
3	NECK WIDTH (SEAM TO SEAM)	Ngang cổ từ đm đến đm	1/8	6 3/4				
4	ACROSS SHOULDER (SEAM TO SEAM)	Ngang vai từ đm đến đm	1/2	18 1/2				
5	ACROSS FRONT (6" DOWN FROM HPS)	Ngang ngực dưới cao vai 6"	1/4	16 3/4				
6	CHEST (1" BELOW ARMHOLE)	Ngang ngực dưới nách 1"	1/4	23				
7	SWEEP OPENING	Ngang lai	1/4	19 1/2				
8	FRONT NECK DROP (HPS TO SEAM)	Hạ cổ trước - từ cao vai đến đm	1/4	4				
9	BACK NECK DROP (HPS TO SEAM)	Hạ cổ sau - từ cao vai đến đm	1/4	1/2				
10	ARMHOLE (STRAIGHT)	Nách đo thẳng	1/8	9 3/4				
11	SLEEVE LENGTH FROM SHOULDER SEAM	Dài tay từ đầu vai	1/8	24				
12	BICEP (1" BELOW ARMHOLE)	Bắp tay - dưới nách 1"	1/8	9 1/2				
13	SLEEVE OPENING (RELAXED)	Cửa tay - đo thường	1/8	3 3/4				
14	SLEEVE CUFF RIB TRIM HEIGHT	Cao bo tay	1/4	2 1/2				
15	COLLAR HEIGHT AT CBN	Cao lá cổ ở giữa cổ sau	1/4	3				
16	CF ZIPPER LENGTH	Dài dây kéo	0	17 1/2				
17	CF PLACKET WIDTH	To bản nẹp trước	1/8	2				
18	BOTTOM HEM TUNNEL HEIGHT	Cao bo lai	1/8	1 1/8				
19	SIDE SEAM FORWARD POSITION FROM CF	Chồm sườn tính từ giữa trước	1/8	10				
20	SIDE POCKET OPENING LENGTH	Dài túi sườn	1/8	6 3/8				
21	DISTANCE BETWEEN SIDE POCKET OPENING TO WB SEAM	Khoảng cách từ túi sườn đến đường tra bo lai	1/8	3 1/4				
22	EPAULETTE L (FRONT EDGE) X W	Kích thước cá vai	1/8	5 5/8 x 2				
23	LOCKER LOOP L X W	Kích thước dây treo	1/8	3 1/4 x 3/8				
24	DRAWSTRING LENGTH (METAL TIP INCLDUE)	Dài dây luồn	1/4	47				

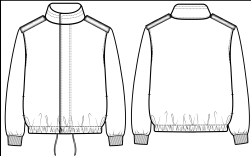
# ENCHANTÉ

STYLE #	EN1125MJ01	STYLE NAME	COTTON CANVAS JACKET	CATEGORY	OUTERWEAR	SKETCH			
SEASON	SPEEDWAY 2025	DELIVERY	11/15 XF	FABRIC DESCRIPTION	COTTON CANVAS				
FACTORY	UA	STAGE	DEVELOPMENT	FABRIC CONTENT					
SIZE RANGE	XS-XXL	SAMPLE SIZE	LARGE	TP BY:	GD				
SELF		COMBO		LINING					
CUTTING DIRECTION		CUTTING DIRECTION		CUTTING DIRECTION					
PLACEMENT		PLACEMENT		PLACEMENT					
TREATMENT		TREATMENT		TREATMENT					
SAMPLE NOTES / CALLOUTS					1	2	3	4	
					COLOR NAME	Black			
					COLOR #				

CUTTING MATERIAL(S)									COLOR OF MATERIAL			
ITEM	CONTENT	ARTICLE #	DESCRIPTION	SUPPLIER	WIDTH	YIELD	UOM	PLACEMENT	1	2	3	4
SELF			Cotton Canvas					Self - All	Black			
COMBO			2x2 Rib					Sleeve Cuff	Black			
LINING			Cotton Voile					Lining - Fully lined at body and sleeves, pocket bags	Black			
FUSE												
TRIM(S)									COLOR OF TRIM			
ITEM	IMAGE	ARTICLE #	DESCRIPTION	SUPPLIER	SIZE	QUANTITY	UOM	PLACEMENT	1	2	3	4
ZIPPER		Factory Sourced	#5 Metal Zipper	Factory Sourced	#5	1	Units	1x CF	Antique Brass			
SNAP		Factory Sourced	Machine Applied Snap	Factory Sourced	20L	5	Units	5x CF (1x Collar Stand, 4x Body)	Antique Brass			
DRAWSTRING		Factory Sourced	Cotton Drawstring + Metal Aglet	Factory Sourced		1	Units	Waist Hem Tunnel	Black			
ELASTIC		Factory Sourced	Elastic	Factory Sourced	3/4"			Encased at Waist Hem Tunnel	Black			
THREAD		Factory Sourced	Thread	Factory Sourced	Tex 60			All Sewing / Topstitching Thread	Black			
LABELS + HANGTAGS + PACKAGING									COLOR OF TRIM			
ITEM	IMAGE	ARTICLE #	DESCRIPTION	SUPPLIER	SIZE	QUANTITY	UOM	PLACEMENT	1	2	3	4
LABEL		TBC	Enchante Woven Label	TBC	TBC	1	Units	1 x CB Waist				
LABEL		TBC	Enchante Care Label - Alpha	TBC	TBC	1	Units	1 x Wearer's Left SS (See Label Guide)				
PACKAGING			Poly Bag	Biolo	14" x 20"	1	Units					
PACKAGING			Barcode Sticker	Factory Sourced		1	Units					




ENCHANTÉ

STYLE #	EN1125MJ01	STYLE NAME	COTTON CANVAS JACKET	CATEGORY	OUTERWEAR	<div>SKETCH</div> 
SEASON	SPEEDWAY 2025	DELIVERY	11/15 XF	FABRIC DESCRIPTION	COTTON CANVAS	
FACTORY	UA	STAGE	DEVELOPMENT	FABRIC CONTENT		
SIZE RANGE	XS-XXL	SAMPLE SIZE	LARGE	TP BY:	GD	

LABEL GUIDE


NOTES:

MAIN LABEL PLACEMENT

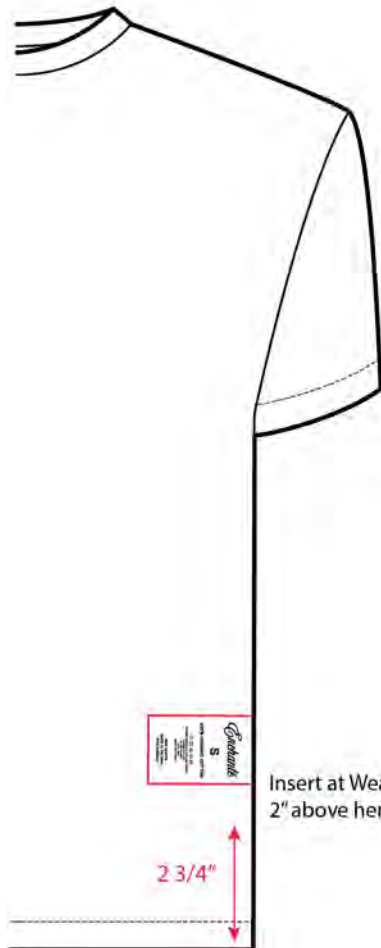


Label should be stitched through garment on both sides of label at **INSIDE EDGE OF FOLD LINE**  
(Stitch should NOT be visible on front side of label)

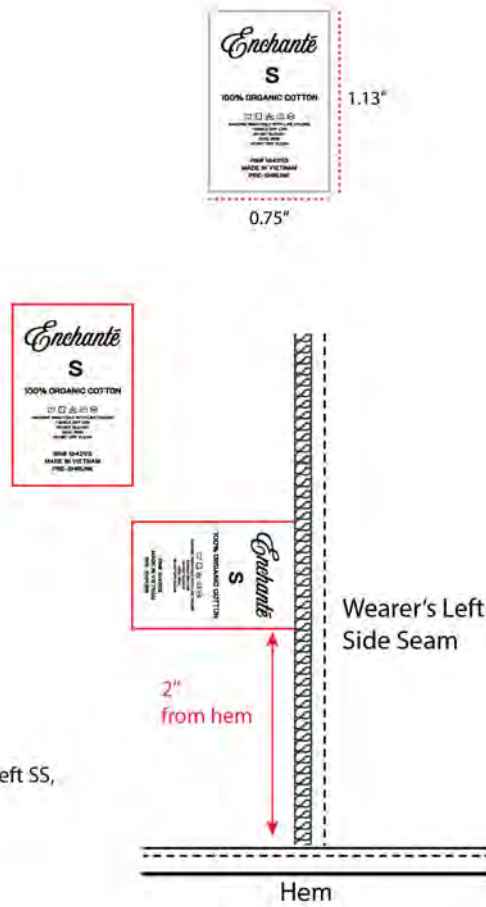
Sewing thread color:  
Top thread- DTM to label, Bobbin - DTM to Self



CARE LABEL PLACEMENT



Insert at Wearer's Left SS,  
2" above hem



Wearer's Left Side Seam

2" from hem

Hem

Interior Construction View