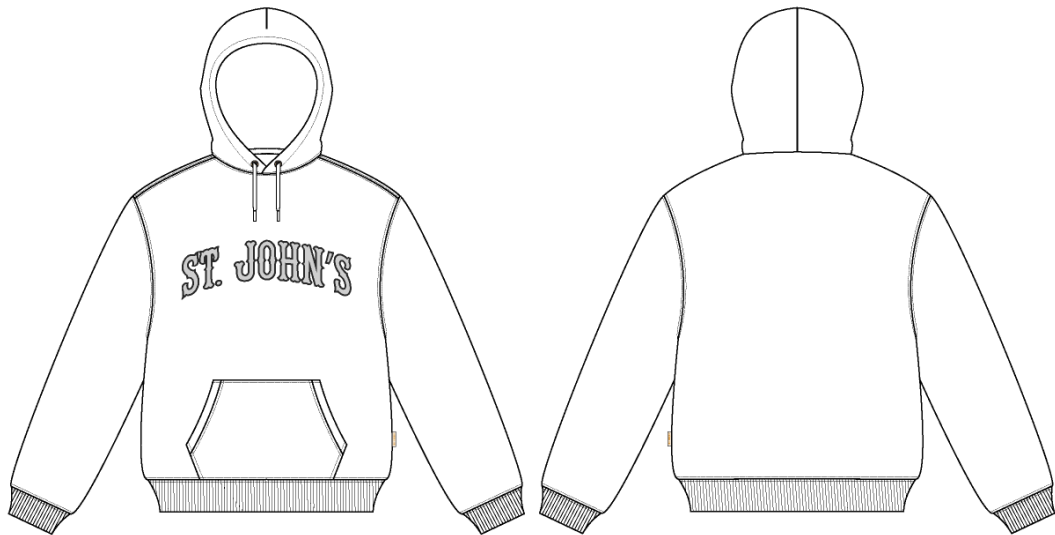


St.John's Hoodie

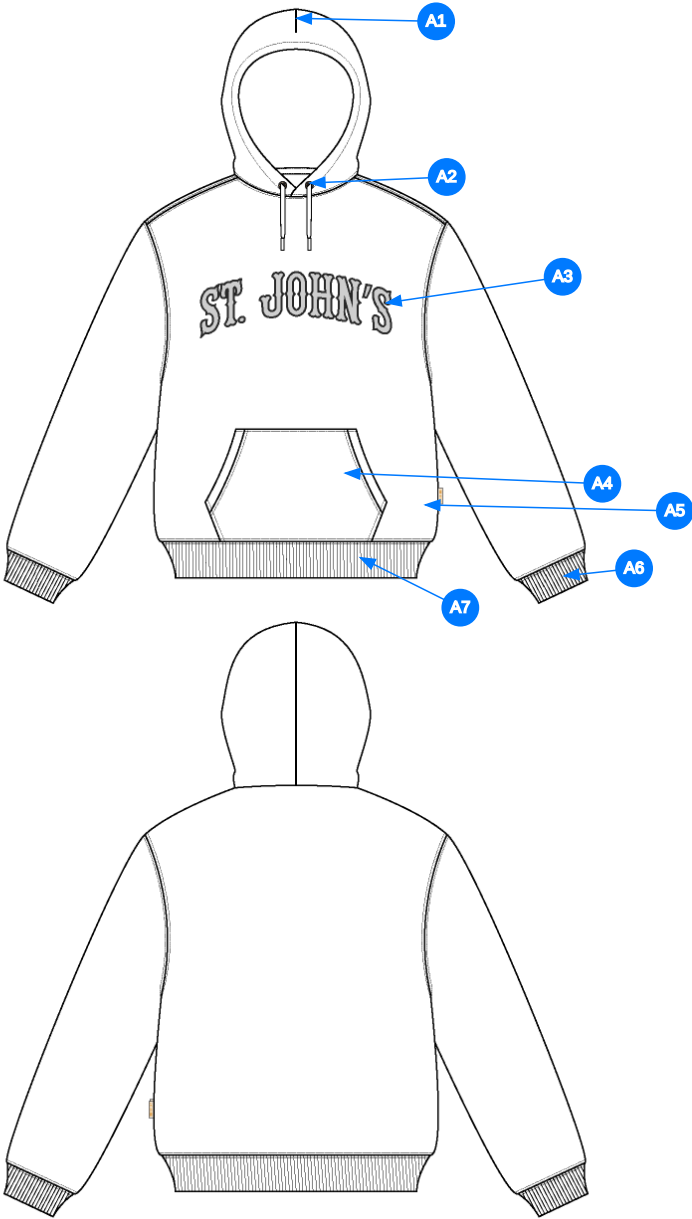
Name	St.John's Hoodie
Style No.	FW24CH011
Division	Mens
Category	Sweatshirts
Season	Fall/Winter
Year	2024
Size Scale	M -Sample size <div><div>XS</div><div>S</div><div>M</div><div>L</div><div>XL</div><div>XXL</div></div>
Factory	UN-AVAILABLE
Created by/Author	6/13/2024 Jeni Fitzgerald jeni.fitzgerald@ameleondore.com



1_B&W-1



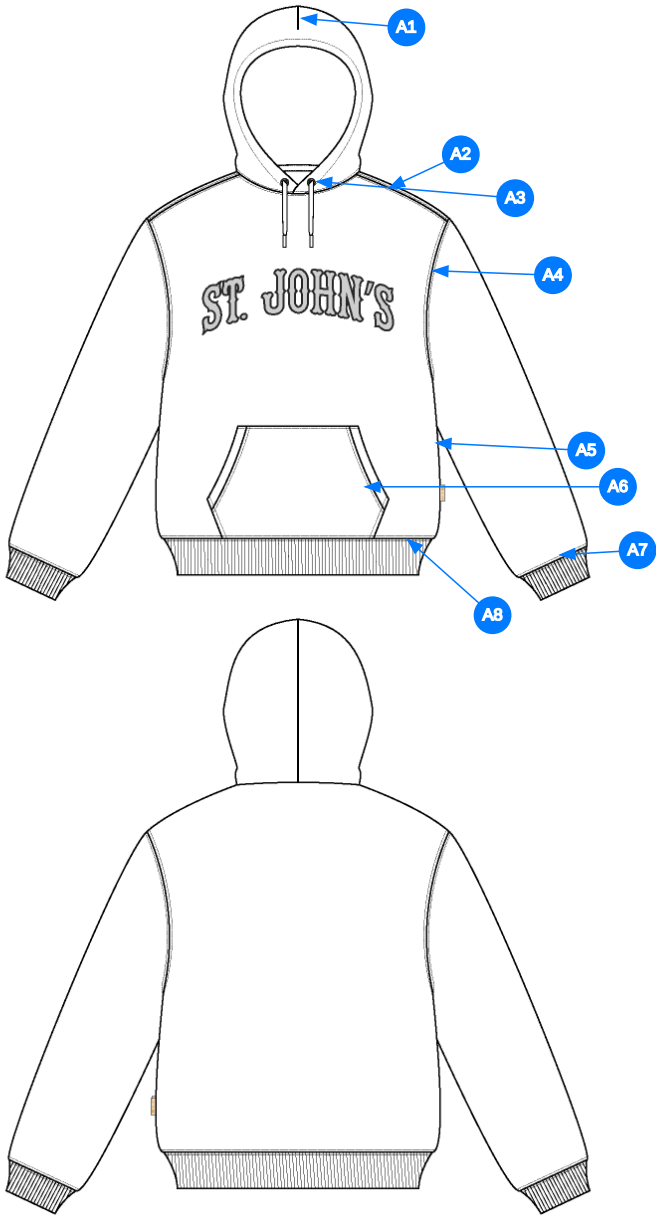
2_CLR-1



Comments (7)

- A1 DART @ HOOD
- A2 METAL EYELETS W/ DRAWCORD @ HOOD - ROUND BRAIDED DRAWCORDS W/ PLASTIC AGLET
- A3 ARTWORK @ CF CHEST - SEE SEPARATE ARTWORK FILE FOR DETAILS
- A4 KANGAROO POCKET @ FRONT BODY
- A5 ALD WOVEN LABEL @ SIDE SEAM
- A6 1X1 RIB DOUBLED @ SLEEVE CUFFS
- A7 1X1 RIB DOUBLED @ SLEEVE CUFFS

3_Construction Details-1



Comments (8)

- A1** DART @ HOOD
- A2** STRADDLE STITCH @ SHOULDER SEAM
- A3** STRADDLE STITCH @ NECK
- A4** STRADDLE STITCH @ ARMHOLE
- A5** CLEAN SEAM FINISH @ SIDE SEAM
- A6** 1/8" SN TS @ POCKET - APPLIES TO TOP AND BOTTOM EDGES - 1/4" DN TS @ OPENINGS
- A7** STRADDLE STITCH @ SLEEVE CUFF
- A8** STRADDLE STITCH @ BOTTOM HEM

4_Stitching Details-1

Sample Size: M

POINT OF MEASURE	CODE	HOW TO MEASURE	CRITICAL	TYPE	TOLERANCE	M
Front Body Length	S&K01	HPS to bottom edge	true	Full	1/4 in	27 in
Back Body Length	S&K02	CB neck seam to bottom edge	true	Full	1/4 in	26 1/4 in
Shoulder Slope	S&K08	Shoulder point perpendicular to HPS	false	Full	1/4 in	2 1/2 in
Front Neck Drop	S&K04	HPS to neck seam	false	Full	1/8 in	3 1/2 in
Back Neck Drop	S&K05	HPS to neck seam	false	Full	1/8 in	3/4 in
Back Neck Width	S&K06	Seam to seam at back neck, at HPS point	false	Full	1/4 in	9 in
Minimum Neck Stretch	S&K199		true	Half	0 in	11 1/2 in
Across Shoulder Width- Seam to seam	S&K259	Seam to Seam	false	Full	1/4 in	22 1/2 in
Across Front	S&K010	7" dwn from HPS, Seam to seam	false	Half	1/4 in	20 1/2 in
Across Back	S&K011	7" dwn from HPS, Seam to Seam	false	Half	1/4 in	21 in
Chest Width	S&K012	1" Below armhole- edge to edge	true	Half	1/4 in	22 1/2 in
Bottom Opening Width- At Seam	S&K108	Straight with seam relaxed	true	Half	1/4 in	19 in
Bottom Opening Width- At Edge	S&K013	At bottom edge	true	Half	1/4 in	17 in
Bottom Hem Height	S&K014	Bottom edge to stitch line or trim seam	false	Full	1/8 in	2 1/2 in
Sleeve Length from CB Neck	S&K032	3-point measure from CB Neck to shoulder point to sleeve edge	true	Full	1/4 in	35 in
Armhole Drop	S&K016	Below HPS - measure perpendicular	false	Full	1/4 in	13 in
Bicep Width	S&K017	1" below armhole- edge to edge	false	Half	1/4 in	10 1/4 in
Forearm Width	S&K033	9" up from sleeve cuff edge	false	Half	1/4 in	7 1/2 in
Sleeve Opening Width- At Seam	S&K034	Width at Seam	false	Half	1/4 in	4 3/4 in
Sleeve Opening Width- At Edge	S&K73	At edge	false	Half	1/4 in	3 3/4 in
Sleeve Cuff Height	S&K36	Cuff edge to seam	false	Full	1/8 in	2 1/2 in
Hood Height at CF	S&K40	From neck seam to top edge	false	Half	3/8 in	15 in
Hood Height at HPS	S&K170		false	Full	1/8 in	13 1/2 in
Hood Width 6" Below Top Edge	S&K41	Straight from CF edge to CB seam- 6" down	false	Half	3/8 in	10 1/2 in
Exposed Drawcord Length	JHqvA4		false	Full	1/2 in	10 in
Hood Overlap Width at CF Neck	S&K174		false	Full	1/8 in	1 in
Hood Tunnel Height	S&K183		false	Full	1/8 in	1 in
Drawcord Opening Placement up from Neck Seam	S&K212		false	Full	1/8 in	1 1/2 in
Kangaroo Pocket Height At Center	S&K44	Height at center	false	Full	1/4 in	8 1/2 in
Kangaroo Pocket Width at Top Edge	S&K45	Width at top edge	false	Full	1/4 in	9 1/2 in
Kangaroo Pocket Width at Bottom	S&K46	Width at Bottom Edge	false	Full	1/4 in	13 in
Kangaroo Pocket Height at Sides	S&K384		false	Full	1/8 in	3 in
Pocket Hem Height	S&K97	Height of pocket rib or trim	false	Full	1/8 in	3/4 in
CF Artwork Placement below CF Neckline	S&K112	From CF Neck Seam to Top Edge of Artwork	false	Full	1/8 in	3 in
Loop Label Placement at Sideseam	S&K023	Bottom edge to bottom of loop label, at the WL side seam	false	Full	1/8 in	7 in

Development Notes - Anastasiya Zolotova

CREATED ON JUN 13, 2024 3:41 PM

FW24CH011 St.John's Hoodie
Date: 6/13/24
Status: Direct to PPS
TD: Anastasiya

Fit: Follow FW24CH000 Crest Hoodie
-Updated artwork

COMPONENT		QTY	1. NO COLOR ASSIGNED
1	UA Brushed Back Heavy Fleece CODE: C2300708 BRUSHED Placement: BODY / PATCH POCKET Supplier: UNAVAILABLE Weight: 560gsm Country of Origin: VIETNAM		Not used
2	UA 2x2 Terry Rib CODE: C2300246 Placement: CUFFS / HEM Supplier: UNAVAILABLE		Not used
3	UA Herringbone Tape CODE: ALTAPE1 Supplier: UNAVAILABLE		Not used Width: Undefined
4	SS24-CRDW CODE: UA Cotton Round Drawcord Placement: HOOD TUNNEL Notes: PLASTIC AGLETS Supplier: UNAVAILABLE		Not used
5	EY-GOLD1 CODE: UA Gold Generic Eyeletes Placement: DRAWCORD EXIT Supplier: UNAVAILABLE		Not used
6	ARTWORK CODE: AS CORRESPONDING FILE Placement: CF Notes: 11" ST. JOHN'S APPLIQUE Supplier: Factory Sourced		Not used
LABEL PACKAGE			
7	ALD Woven Main Label W/ Size CODE: ALD-ML03 Placement: INTERIOR CENTER BACK NECK Supplier: Colonial Country of Origin: CHINA	1 Piece	Not used
8	ALD Woven Loop Label CODE: ALD-ML02 Placement: WEARERS LEFT SIDE SEAM Notes: FOLLOW POM Supplier: Colonial		Not used
9	ALD Hangtag CODE: ALD-T06P Placement: WEARER'S LEFT ARMHOLE ABOVE SIDE SEAM Supplier: Colonial Country of Origin: CHINA	1 Piece	Not used
10	ALD Branded Polybag - 15" X 18" (RECYCLED) CODE: ALD-PB02-R Supplier: Colonial Country of Origin: CHINA	1 Piece	Not used
11	ALD Woven Care + Content + COO Label CODE: ALD-COO-XXX Placement: INTERIOR WEARER'S LEFT SIDE SEAM, 5" ABOVE BODY HEM Supplier: Colonial Country of Origin: CHINA	1 Piece	Not used
12	UPC Sticker CODE: UPC Placement: POLY BAG; BACK SIDE, UPPER RIGHT HAND CORNER Supplier: Factory Sourced	1	Not used
Components 12			Total 0.00