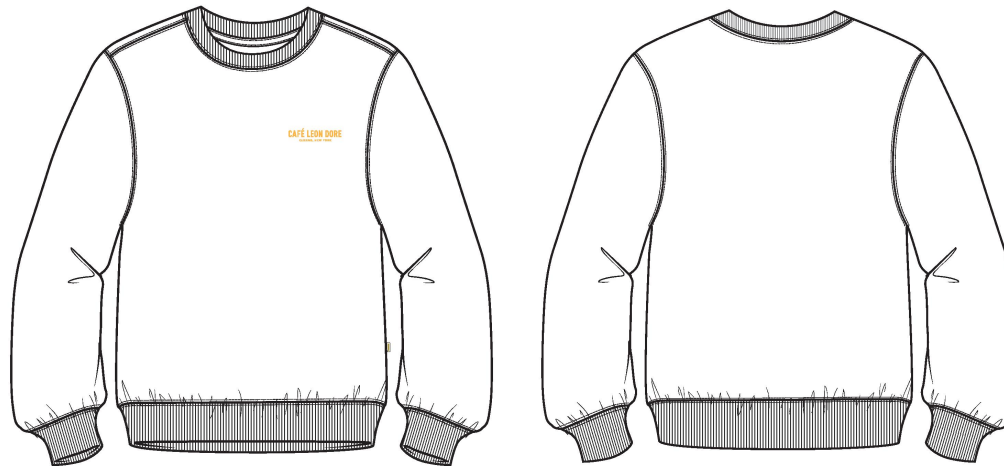


Cafe Crewneck

Name	Cafe Crewneck
Style No.	CA25CS000
Division	Mens
Category	Sweatshirts
Season	Spring/Summer
Year	2025
Size Scale	<div>M</div> -Sample size <div><div>XS</div><div>S</div><div>M</div><div>L</div><div>XL</div><div>XXL</div></div>
Style Status	Development
Factory	UN-AVAILABLE
Designer Name	Lonz
TD Name	Anastasiya
Created by/Author	11/22/2024 Anastasiya Zolotova anastasiya.zolotova@aimeleondore.com



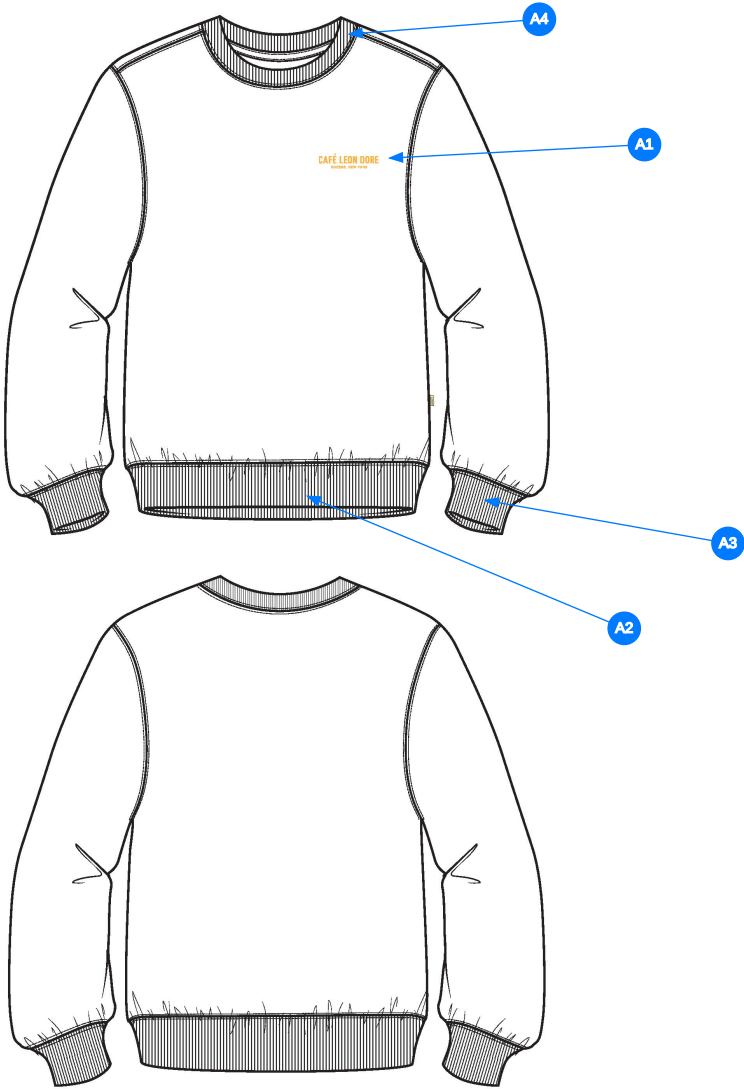
1_B+W



BOTANICAL GREEN
- 2x1 RIB: DTM

2_CLR

CONSTRUCTION DETAILS



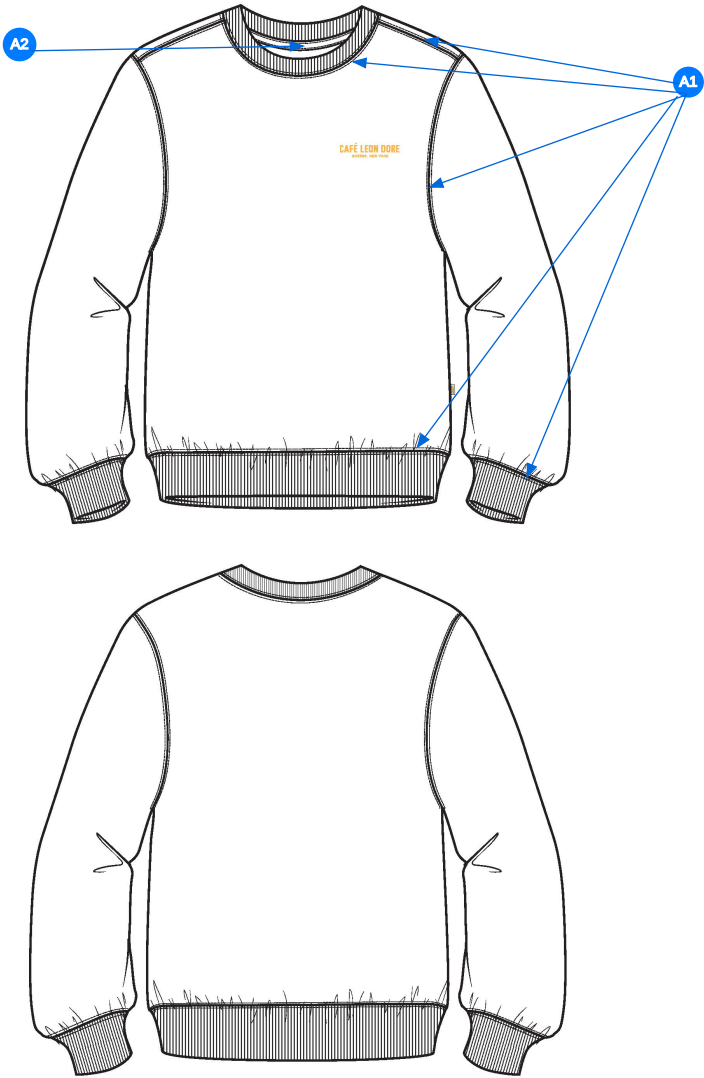
Comments (4)

- A1 PRINTED ARTWORK @ WL CHEST
- A2 2X2 RIB @ BOTTOM OPENING
- A3 2X2 RIB @ CUFF
- A4 2X2 RIB @ COLLAR

3_CONSTRUCTION DETAILS

Comments (2)

- A1 DOUBLE NEEDLE STRADDLE STITCHING @ SHOULDERS, ARMHOLE, CUFF, BOTTOM HEM, NECK
- A2 JERSEY TAPE @ BACK NECK



4_STITCHING DETAILS

Sample Size: M

POINT OF MEASURE	HOW TO MEASURE	CRITICAL	TYPE	TOLERANCE	M
Front Body Length	HPS to bottom edge	true	Full	1/4 in	27 in
Back Body Length	CB neck seam to bottom edge	true	Full	1/4 in	25 3/4 in
Shoulder Seam Forward	HPS to seam	false	Full	1/8 in	1/2 in
Shoulder Slope	Shoulder point perpendicular to HPS	false	Full	1/4 in	2 in
Front Neck Drop	HPS to neck seam	false	Full	1/8 in	4 in
Back Neck Drop	HPS to neck seam	false	Full	1/8 in	1 1/4 in
Back Neck Width	Seam to seam at back neck, at HPS point	false	Full	1/4 in	7 3/4 in
Neck Trim Height	Neck Seam to trim edge	false	Full	1/8 in	13/16 in
Minimum Neck Stretch		true	Half	0 in	11 1/2 in
Across Shoulder	Seam to seam	false	Half	1/4 in	20 1/2 in
Across Front	7" dwn from HPS, Seam to seam	false	Half	1/4 in	19 in
Across Back	7" dwn from HPS, Seam to Seam	false	Half	1/4 in	19 1/2 in
Chest Width	1" Below armhole- edge to edge	true	Half	1/4 in	22 3/4 in
Bottom Opening 2" Above Rib Knit Seam		true	Half	1/4 in	21 3/4 in
Bottom Opening Width- At Seam	Straight with seam relaxed	true	Half	1/2 in	20 1/4 in
Bottom Opening Width- At Edge	At bottom edge	true	Half	1/4 in	17 in
Bottom Hem Height	Bottom edge to stitch line or trim seam	false	Full	1/8 in	2 3/4 in
Sleeve Length from CB Neck	3-point measure from CB Neck to shoulder point to sleeve edge	true	Full	1/2 in	35 in
Armhole Drop	Below HPS - measure perpendicular	false	Full	1/4 in	12 1/2 in
Bicep Width	1" below armhole- edge to edge	false	Half	1/4 in	9 1/2 in
Forearm Width	9" up from sleeve cuff edge	false	Half	1/4 in	7 1/4 in
Sleeve Opening Width 1" Above Rib Knit Seam		true	Half	1/4 in	5 3/8 in
Sleeve Opening Width- At Seam	Width at Seam	false	Half	1/4 in	4 3/4 in
Sleeve Opening Width- At Edge	At edge	false	Half	1/4 in	3 3/4 in
Sleeve Cuff Height	Cuff edge to seam	false	Full	1/8 in	2 3/4 in
WL Chest Artwork Placement from HPS to Top Edge		true	Full	1/8 in	7 3/4 in
WL Chest Artwork Placement Out from CF Line		false	Full	1/8 in	2 1/4 in
Loop Label Placement at Sideseam	Bottom edge to bottom of loop label, at the WL side seam	false	Full	1/8 in	7 in

Development Notes - Anastasiya Zolotova

CREATED ON SEP 6, 2024 9:36 PM

CA25CS000 Cafe Crewneck
Date: 11/22/24
Status: Requesting 1st Fit
TD: Anastasiya

Fit: Follow FB13 Crewneck Block.