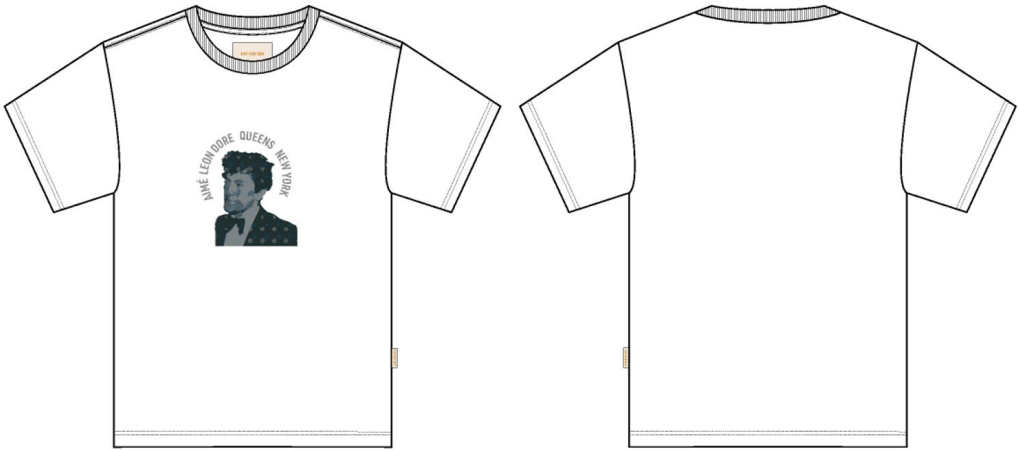


SS Photo Tee

Name	SS Photo Tee
Style No.	SS25CT014
Division	Mens
Category	Tees
Season	Spring/Summer
Year	2025
Size Scale	<div>M</div> -Sample size <div><div>XS</div><div>S</div><div>M</div><div>L</div><div>XL</div><div>XXL</div></div>
Factory	UN-AVAILABLE
Designer Name	Lonz
TD Name	Anastasiya
Created by/Author	4/18/2024 Genny Mayden genny@aimeleondore.com

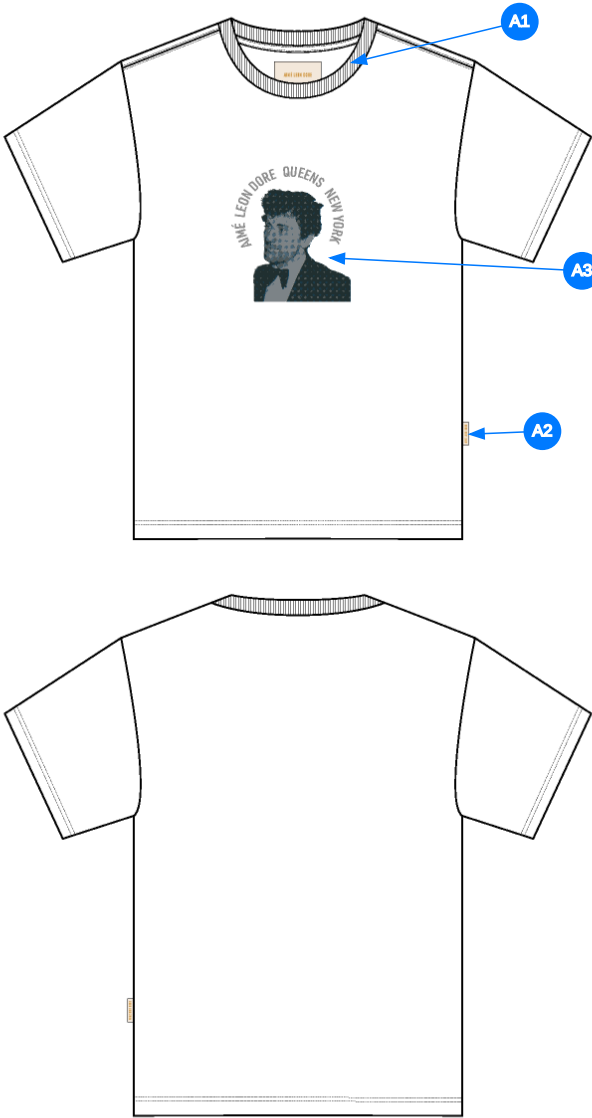


1_B&W-1



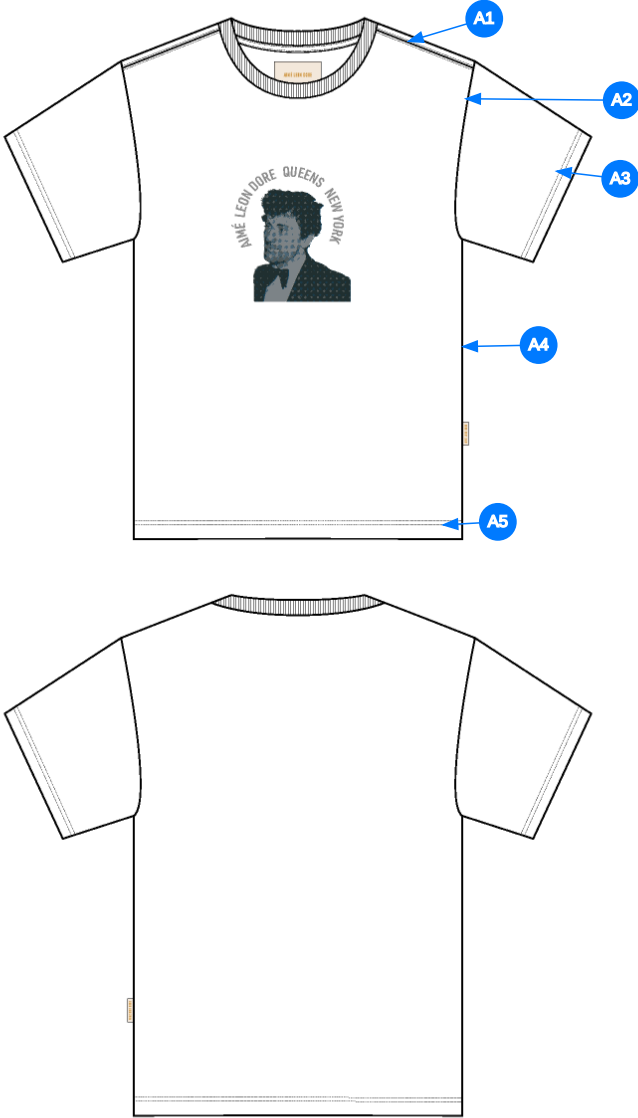
BRIGHT WHITE

2_CLR-1



- Comments (3)
- A1** 1X1 RIB DOUBLED @ COLLAR - JERSEY TAPE ALONG BACK NECK
 - A2** ALD LABEL @ SIDE SEAM
 - A3** ARTWORK @ CF CHEST - SEE SEPARATE ARTWORK FILE FOR DETAILS

3_Construction Details-1



Comments (5)

- A1** STRADDLE STITCH @ SHOULDER SEAM
- A2** CLEAN SEAM FINISH @ ARMHOLE
- A3** 1/4" DN TS @ SLEEVE HEM - TURN BACK W/ COVERLOCK STITCH
- A4** CLEAN SEAM FINISH @ SIDE SEAM
- A5** 1/4" DN TS @ BODY HEM - TURN BACK W/ COVERLOCK STITCH

4_Stitching Details-1

Sample Size: M

POINT OF MEASURE	CODE	HOW TO MEASURE	CRITICAL	TYPE	TOLERANCE	M
Front Body Length	S&K01	HPS to bottom edge	true	Full	1/2 in	28 in
Back Body Length	S&K02	CB neck seam to bottom edge	true	Full	1/2 in	27 1/4 in
Front Neck Drop	S&K04	HPS to neck seam	false	Full	1/8 in	4 in
Back Neck Drop	S&K05	HPS to neck seam	false	Full	1/8 in	3/4 in
Back Neck Width	S&K06	Seam to seam at back neck, at HPS point	false	Full	1/4 in	7 3/4 in
Neck Trim Height	S&K020	Neck Seam to trim edge	false	Full	1/8 in	7/8 in
Minimum Neck Stretch	S&K199		true	Half	0 in	11 1/2 in
Shoulder Seam Forward	S&K07	HPS to seam	false	Full	1/8 in	1/2 in
Shoulder Slope	S&K08	Shoulder point perpendicular to HPS	false	Full	1/4 in	2 in
Across Shoulder	S&K09	Seam to seam	false	Half	3/8 in	18 in
Across Front	S&K010	7" dwn from HPS, Seam to seam	false	Half	3/8 in	16 1/2 in
Across Back	S&K011	7" dwn from HPS, Seam to Seam	false	Half	3/8 in	16 3/4 in
Chest Width	S&K012	1" Below armhole- edge to edge	true	Half	1/2 in	21 in
Bottom Opening Width- At Edge	S&K013	At bottom edge	true	Half	1/2 in	21 in
Bottom Hem Height	S&K014	Bottom edge to stitch line or trim seam	false	Full	1/8 in	3/4 in
Sleeve Length from CB Neck - Short	S&K033	3-point measure from CB Neck to shoulder point to sleeve edge	true	Full	1/4 in	18 1/2 in
Armhole Drop	S&K016	Below HPS - measure perpendicular	false	Full	1/4 in	11 1/4 in
Bicep Width	S&K017	1" below armhole- edge to edge	false	Half	1/4 in	8 in
Sleeve Opening Width- At Edge	S&K73	At edge	false	Half	1/4 in	7 1/4 in
Sleeve Hem Height	S&K118	Hem height	false	Full	1/8 in	3/4 in
CF Artwork Placement below CF Neckline	S&K112		false	Full	1/8 in	3 in
Loop Label Placement at Sideseam	S&K023	Bottom edge to bottom of loop label, at the WL side seam	false	Full	1/8 in	7 in

Development Notes - Anastasiya Zolotova

CREATED ON APR 18, 2024 7:25 PM

SS25CT014 SS Photo Tee
Date: 4/18/24
Status: Direct to PPS
TD: Anastasiya

Fit: Please follow pattern of FW24CT002 SS Stacked Logo Tee w/ updated artwork

	THUMBNAIL	COMPONENT	QTY
1		TT-SJ30SX2-W120 CODE: UA CORE JERSEY Placement: BODY / BACK NECK F/ AH TO AH Supplier: UNAVAILABLE Weight: 245 GSM	
2		TT-RIB20SX2 CODE: UA CORE 1x1 RIB Placement: COLLAR Supplier: UNAVAILABLE	
3		ALD Woven Loop Label CODE: ALD-ML02 Placement: WEARERS LEFT SIDE SEAM (FOLLOW POM) Supplier: Colonial	1
4		ARTWORK CODE: SCREENPRINT Placement: CF Notes: FOLLOW ARTWORK AND POM Supplier: Factory Sourced	
LABEL + TRIM PACKAGE			
5		ALD Woven Main Label W/ Size CODE: ALD-ML03 Placement: INTERIOR CENTER BACK NECK Supplier: Colonial Country of Origin: CHINA	1 Piece
6		ALD Hangtag CODE: ALD-T06P Placement: WEARER'S LEFT ARMHOLE ABOVE SIDE SEAM Supplier: Colonial Country of Origin: CHINA	1 Piece
7		ALD Branded Polybag - 12" X 15" (RECYLCED) CODE: ALD-PB01-R Supplier: Colonial Country of Origin: CHINA	1 Piece
8		ALD Woven Care + Content + COO Label CODE: ALD-COO-XXX Placement: INTERIOR WEARER'S LEFT SIDE SEAM, 5" ABOVE BODY HEM Supplier: Colonial Country of Origin: CHINA	1 Piece
9		UPC Sticker CODE: UPC Placement: POLY BAG; BACK SIDE, UPPER RIGHT HAND CORNER Supplier: Factory Sourced	1
Components 9			