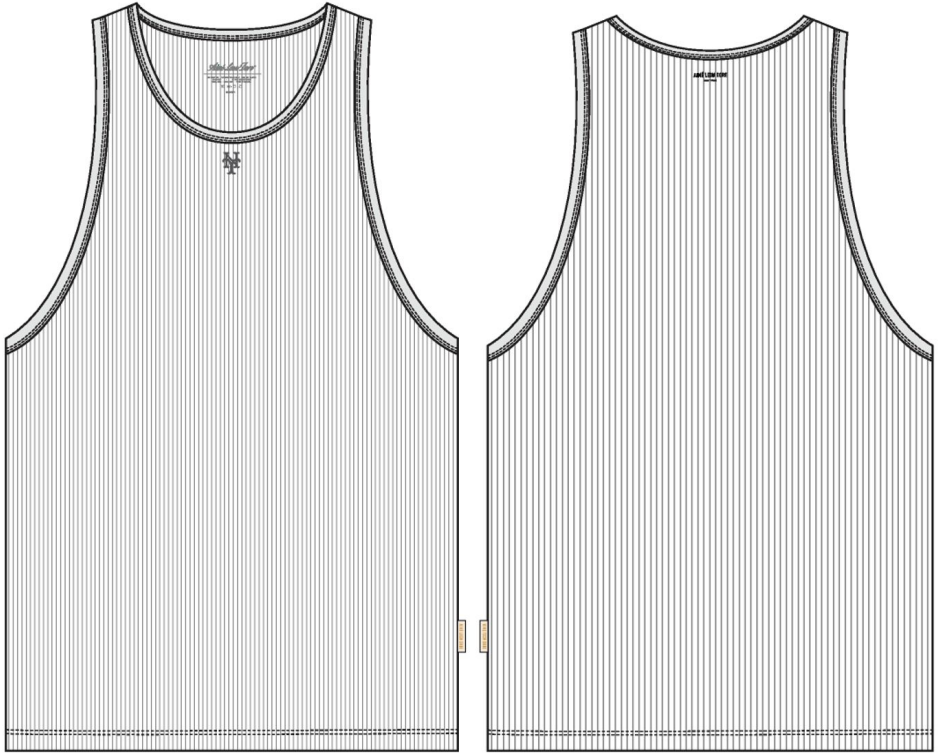


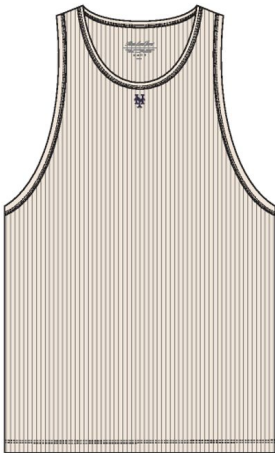
Mets Tank Top

Name	Mets Tank Top
Style No.	SS25CT035
Division	Mens
Category	Tees
Season	Spring/Summer
Year	2025
Size Scale	<div>M</div> -Sample size <div><div>XS</div><div>S</div><div>M</div><div>L</div><div>XL</div><div>XXL</div></div>
TD Name	Anastasiya
Created by/Author	4/18/2024 Genny Mayden genny@aimeleondore.com





1\_B&W-1



PRISTINE

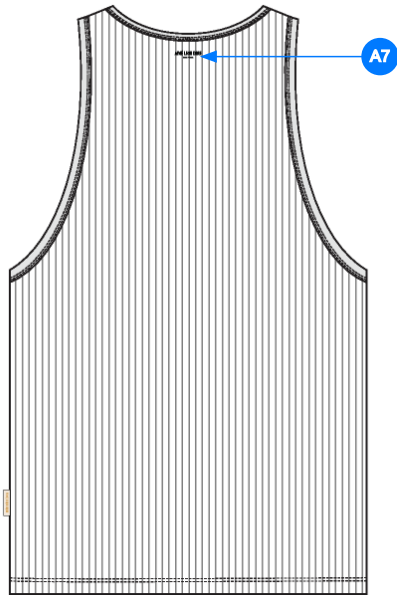
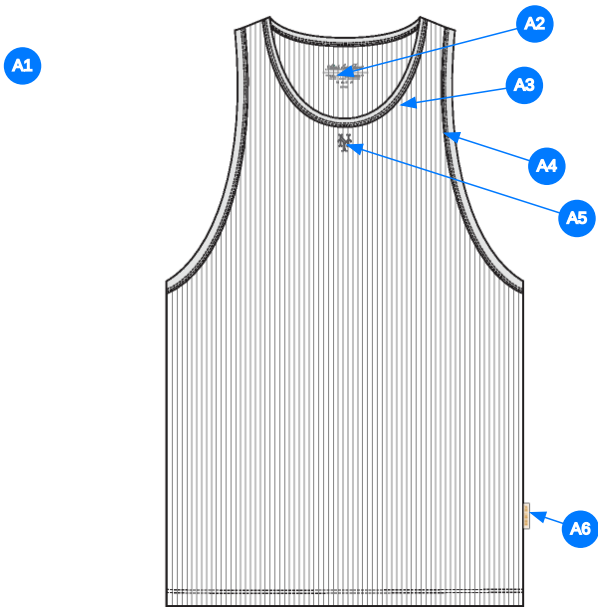


ECLIPSE



JET BLACK

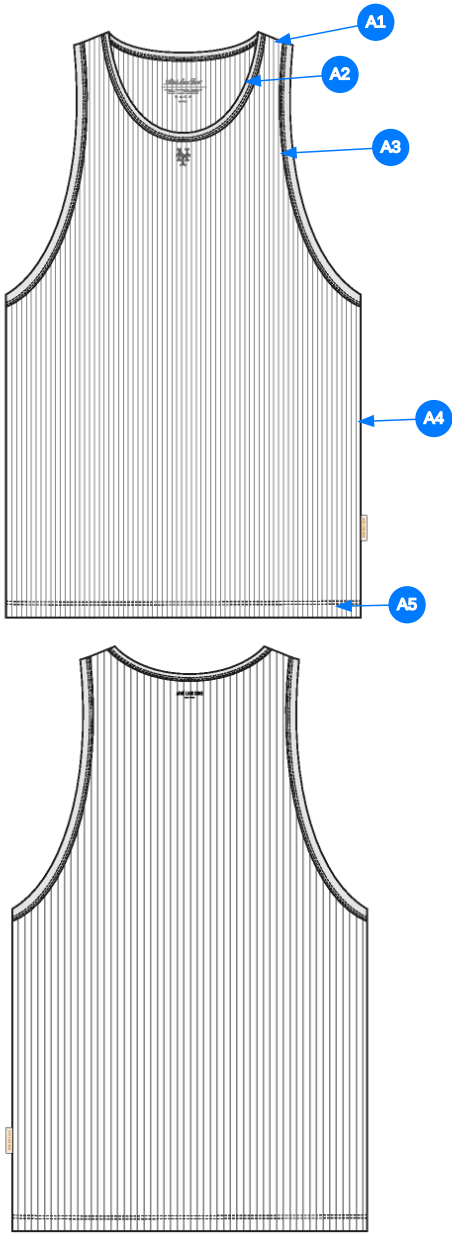
2\_CLR-1



3\_Construction Details-1

Comments (7)

- A1 FIT: PACKAGED TANK TOP
- A2 PRINTED MAIN LABEL @ CB NECK
- A3 JERSEY BINDING @ NECK
- A4 JERSEY BINDING @ ARMHOLE
- A5 ARTWORK @ CF - SEE FOLLOWING PAGES FOR ARTWORK DETAILS
- A6 ALD WOVEN LABEL @ SIDE SEAM
- A7 ARTWORK @ CB - SEE FOLLOWING PAGES FOR ARTWORK DETAILS



Comments (5)

- A1** CLEAN SEAM FINISH @ SHOULDER
- A2** 1/8" DN TS @ NECK
- A3** 1/8" DN TS @ ARMHOLE
- A4** CLEAN SEAM FINISH @ SIDE SEAMS
- A5** 1/4" DN TS @ BOTTOM HEM - TURN BACK W/ COVERLOCK

4\_Stitching Details-1

Sample Size: M

POINT OF MEASURE	CODE	HOW TO MEASURE	CRITICAL	TYPE	TOLERANCE	M
Front Body Length	S&K01	HPS to bottom edge	true	Full	1/2 in	28 1/4 in
Back Body Length	S&K02	CB neck seam to bottom edge	true	Full	1/2 in	25 7/8 in
Shoulder Slope	S&K08	Shoulder point perpendicular to HPS	false	Full	1/4 in	1/2 in
Front Neck Drop	S&K04	HPS to neck seam	false	Full	1/8 in	5 5/8 in
Back Neck Drop	S&K05	HPS to neck seam	false	Full	1/8 in	2 3/8 in
Back Neck Width	S&K06	Seam to seam at back neck, at HPS point	false	Full	1/4 in	6 1/2 in
Binding Width	S&K460		false	Full	1/8 in	7/16 in
Across Shoulder	S&K09	Edge to edge	false	Half	3/8 in	10 1/4 in
Across Front Edge to Edge	S&K106	Edge to Edge	true	Full	1/4 in	8 7/8 in
Across Back Edge to Edge	S&K107	Edge to Edge	false	Full	1/4 in	9 1/4 in
Chest Width	S&K012	1" Below armhole- edge to edge	true	Half	1/2 in	12 1/4 in
Bottom Opening Width- At Edge	S&K013	At bottom edge	true	Half	1/2 in	12 1/4 in
Bottom Hem Height	S&K014	Bottom edge to stitch line or trim seam	false	Full	1/8 in	7/8 in
Armhole Drop	S&K016	Below HPS - measure perpendicular	false	Full	1/4 in	11 in
CF Artwork Placement below CF Neckline	S&K112		false	Full	1/8 in	1 3/4 in
CB Artwork Placement below CB Neck Seam	S&K109	From CB neck seam to top Artwork	false	Full	1/8 in	1/2 in

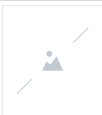
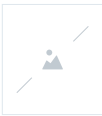

Development Notes - Anastasiya Zolotova

CREATED ON APR 18, 2024 7:35 PM

SS25CT035 Mets Tank Top  
Date: 4/18/24  
Status: Requesting 1st Proto  
TD: Anastasiya

Fit: Please follow pattern of FW24CT028 Seasonal Packaged Tank Top.



THUMBNAIL		COMPONENT	QTY
1		<b>TT-RIB300_RIB</b> CODE: UA TANK RIB Placement: BODY, NECK AND ARMHOLE BINDING Supplier: UNAVAILABLE Weight: 300gsm	
2		<b>ARTWORK</b> CODE: EMBROIDERY Placement: CF CHEST Notes: FOLLOW ARTWORK AND POM Supplier: Factory Sourced	
3		<b>ALD Woven Loop Label</b> CODE: ALD-ML02 Placement: WEARERS LEFT SIDE SEAM Notes: FOLLOW POM Supplier: Colonial	
Components			3