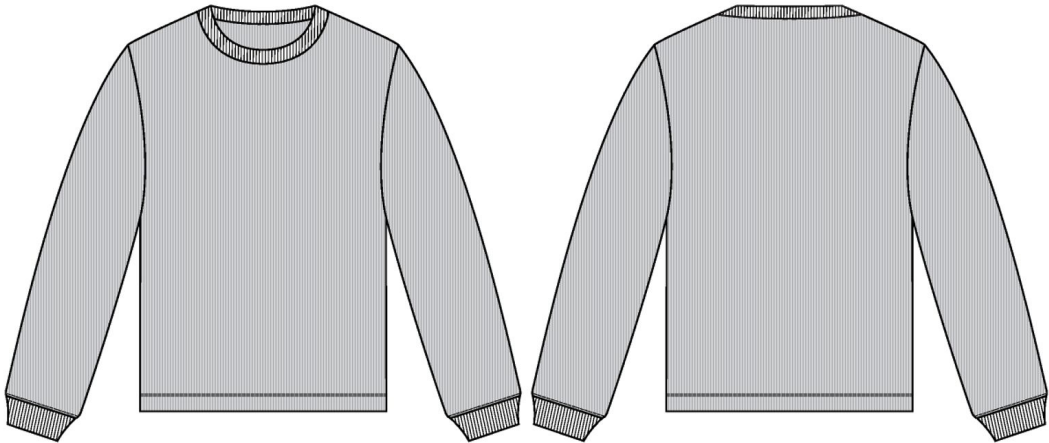


LS Mesh Tee

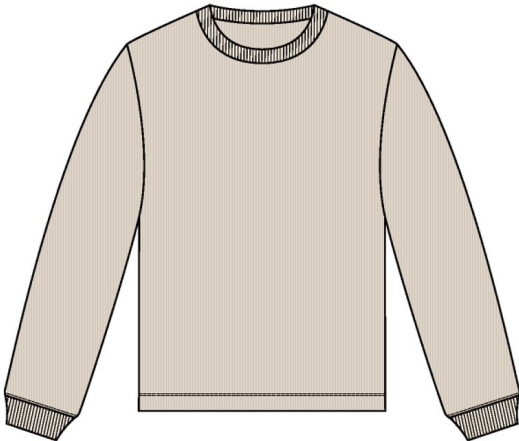
Name	LS Mesh Tee
Style No.	SS25CT038
Division	Mens
Category	Tees
Season	Spring/Summer
Year	2025
Size Scale	<div>M</div> -Sample size <div><div>XS</div><div>S</div><div>M</div><div>L</div><div>XL</div><div>XXL</div></div>
Factory	UN-AVAILABLE
Designer Name	Lonz
TD Name	Anastasiya
Created by/Author	4/18/2024 Genny Mayden genny@aimeleondore.com



1_B&W-1



JET BLACK

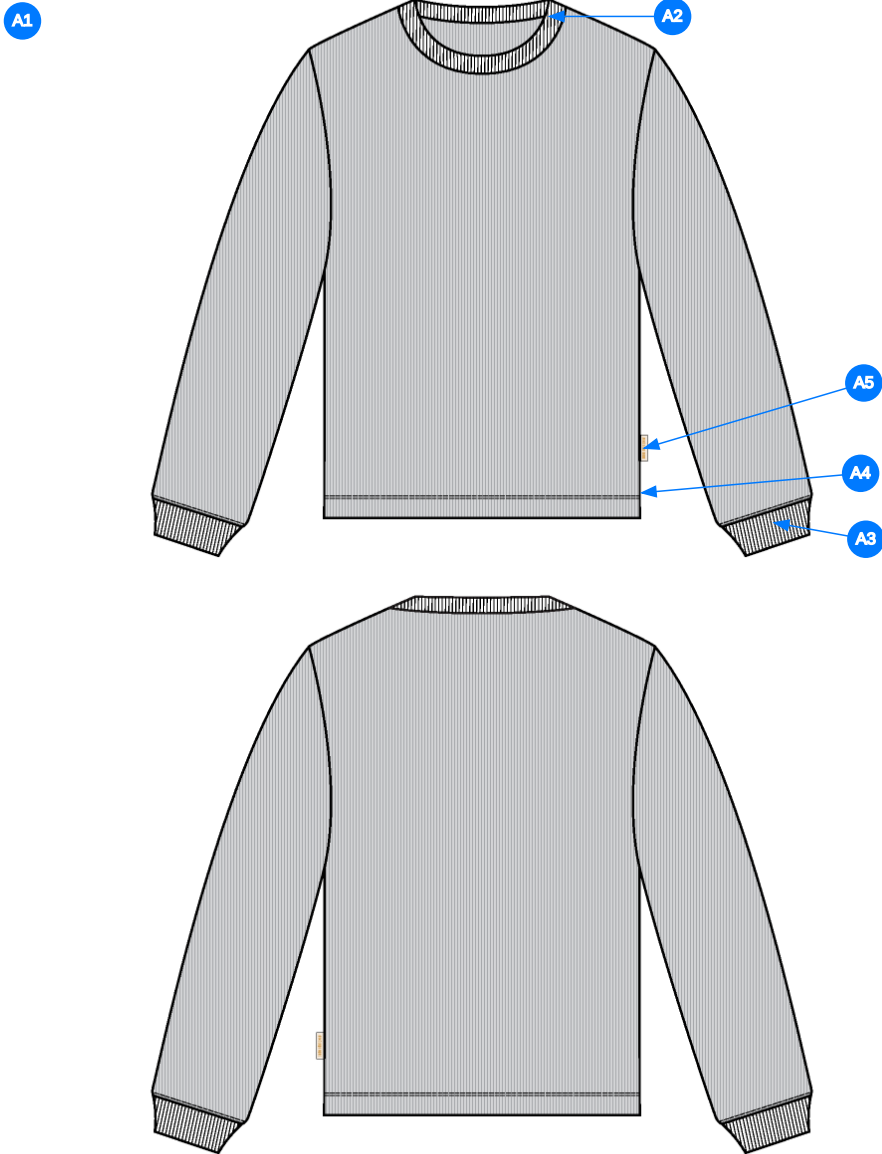


PRISTINE



BEAR GRASS

2_CLR-1

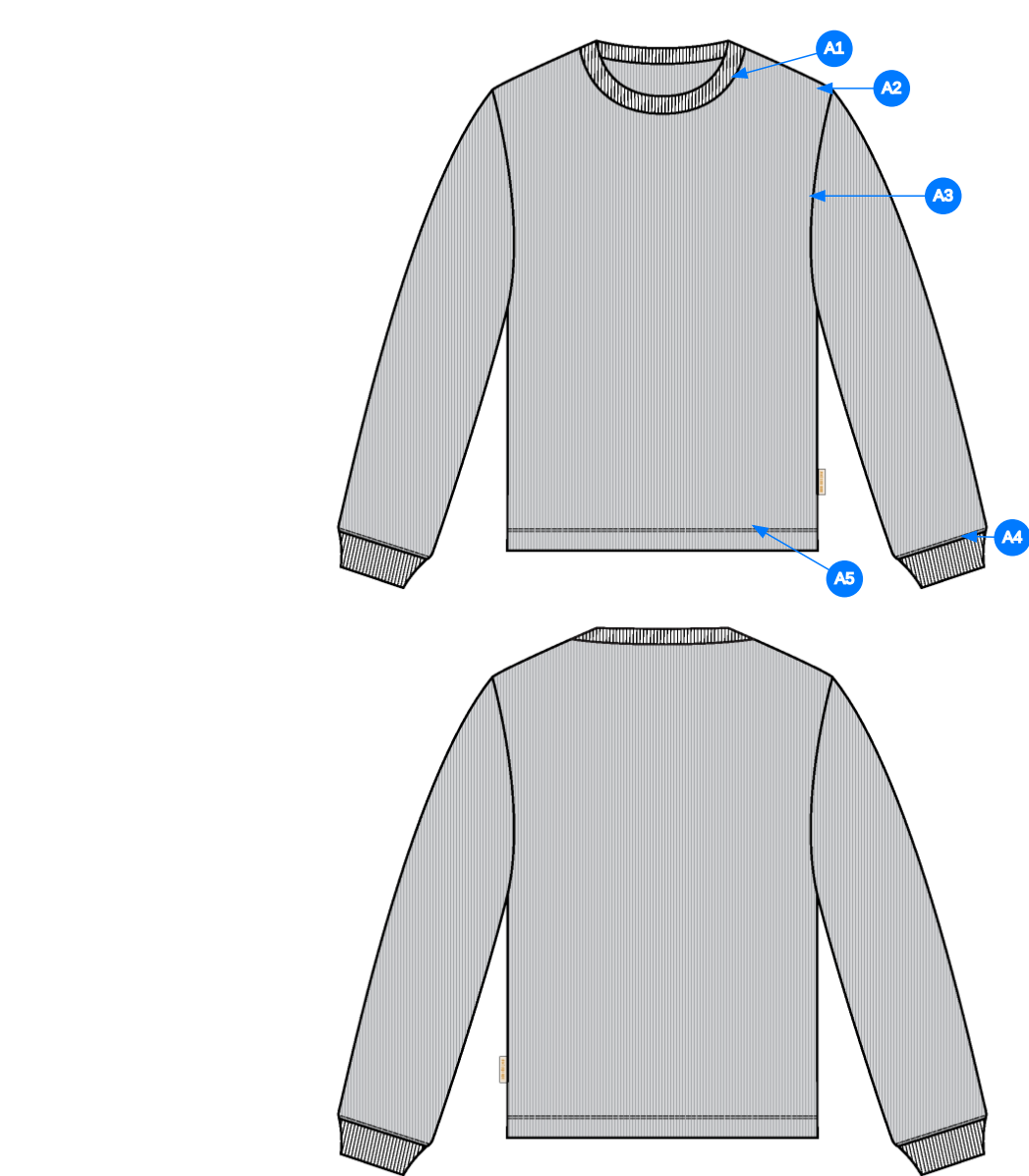


Comments (5)

- A1** FIT: LS MESH TEE (SS24CT049)
- A2** 1x1 COTTON RIB DOUBLED @ NECK
- A3** 1x1 COTTON RIB DOUBLED @ SLEEVE CUFF
- A4** VENT @ SIDE SEAM - TURN BACK W/ COVERLOCK STITCH
- A5** ALD WOVEN LABEL @ SIDE SEAM

- 1. FIT: SS24CT049
- 2.RIB 1X1 MAY TẠI CỔ
- 3. RIB 1X1 TẠI LẠI TAY
- 4. XỂ LẠI TẠI ĐƯỜNG MAY SƯỜN
- 5. NHÃN CỜ SƯỜN NGOÀI.

3_Construction Details-1



- Comments (5)
- A1** 1/4" SN TS @ NECK - COVERLOCK STITCH @ INTERIOR NECK
 - A2** CLEAN SEAM FINISH @ SHOULDER
 - A3** CLEAN SEAM FINISH @ ARMHOLE
 - A4** STRADDLE STITCH @ SLEEVE CUFFS
 - A5** 1/4" DN TS @ BOTTOM HEM - TURNBACK W/ COVERLOCK STITCH

- 1. ĐIỀU 1 KIM 1/4" TẠI CỔ - VẮT SỔ MẶT TRONG
- 2. MAY SẠCH TẠI ĐƯỜNG MAY VAI
- 3. MAY SẠCH TẠI ĐƯỜNG MAY NÁCH
- 4. ĐIỀU 2 KIM 1/4" TẠI LAI ÁO VẮT SỔ MẶT TRONG

4_Stitching Details-1

Sample Size: M

POINT OF MEASURE	CODE	HOW TO MEASURE	CRITICAL	TYPE	TOLERANCE	M
Front Body Length	S&K001	HPS to bottom edge	true	Full	1/2 in	27 3/4 in
Back Body Length	S&K002	CB neck seam to bottom edge	true	Full	1/2 in	26 3/4 in
Front Neck Drop	S&K004	HPS to neck seam	false	Full	1/8 in	4 1/4 in
Back Neck Drop	WV005	FROM HPS LEVEL STRAIGHT DOWN TO CB NECK SEAM	true	Full	1/8 in	7/8 in
Back Neck Width	S&K006	Seam to seam at back neck, at HPS point	false	Full	1/4 in	7 in
Neck Trim Height	S&K254	Neck Seam to trim edge (before folded)	false	Full	1/8 in	3/4 in
Shoulder Seam Forward	S&K007	HPS to seam	false	Full	1/8 in	1/2 in
Shoulder Slope	S&K008	Shoulder point perpendicular to HPS	false	Full	1/4 in	2 in
Across Shoulder Width- Seam to seam	S&K259	Seam to Seam	false	Full	1/4 in	18 in
Across Front	S&K010	7" dwn from HPS, Seam to seam	false	Half	3/8 in	15 3/4 in
Across Back	S&K011	7" dwn from HPS, Seam to Seam	false	Half	3/8 in	16 1/4 in
Chest Width	S&K012	1" Below armhole- edge to edge	true	Half	1/2 in	21 1/2 in
Bottom Opening Width- At Edge	S&K013	At bottom edge	true	Half	1/2 in	21 in
Bottom Hem Height	S&K014	Bottom edge to stitch line or trim seam	false	Full	1/8 in	1 in
Sleeve Length from CB Neck	S&K032	3-point measure from CB Neck to shoulder point to sleeve edge	true	Full	1/2 in	33 3/4 in
Armhole Drop	S&K016	Below HPS - measure perpendicular	false	Full	1/4 in	11 1/2 in
Bicep Width	S&K017	1" below armhole- edge to edge	false	Half	1/4 in	8 3/4 in
Forearm Width	S&K345	9" up from sleeve cuff edge	false	Half	1/4 in	6 1/2 in
Sleeve Opening Width 1" Above Rib Knit Seam	S&K		true	Half	1/4 in	5 1/4 in
Sleeve Opening Width- At Edge	S&K073	At edge	false	Half	1/4 in	3 3/4 in
Cuff Height	S&K036	Cuff edge to seam	false	Full	1/8 in	2 in
Side Slit Height	S&K093	From bottom edge to top of slit	false	Full	1/8 in	1 3/8 in
Loop Label Placement at Sideseam	S&K023	Bottom edge to bottom of loop label, at the WL side seam	false	Full	1/8 in	7 in

Development Notes - Anastasiya Zolotova

CREATED ON APR 18, 2024 3:47 PM

SS25CT038 LS Mesh Tee
Date: 4/18/24
Status: Requesting 1st Proto
TD: Anastasiya

Fit: Please follow pattern of SS24CT049 LS Mesh Tee
-Remove sleeve paneling

FIT: THAM KHẢO RÁP SS24CT049
- BỎ PHỐI TAY

THUMBAIL		COMPONENT	QTY
1		WYU2308-4 CODE: WYU2308-4 UA COTTON MESH Placement: BODY Supplier: UNAVAILABLE Width: 160CM Weight: 250GSM	
2		WYU2308-4 CODE: WYU2308-4 UA COTTON MESH Placement: SLEEVE PANELS Supplier: UNAVAILABLE Width: 160CM Weight: 250GSM	
3		WYU1024-2 CODE: WYU1024-2 RIB Placement: COLLAR, CUFFS Supplier: UNAVAILABLE	
4		ALD Woven Loop Label CODE: ALD-ML02 Placement: WL SIDE SEAM Notes: FOLLOW POM Supplier: Colonial	
LABEL PACKAGE			
5		ALD Woven Main Label W/ Size CODE: ALD-ML03 Placement: INTERIOR CENTER BACK NECK Supplier: Colonial Country of Origin: CHINA	1 Piece
6		ALD Hangtag CODE: ALD-T06P Placement: WEARER'S LEFT ARMHOLE ABOVE SIDE SEAM Supplier: Colonial Country of Origin: CHINA	1 Piece
7		ALD Branded Polybag - 12" X 15" (RECYLCED) CODE: ALD-PB01-R Supplier: Colonial Country of Origin: CHINA	1 Piece
8		ALD Woven Care + Content + COO Label CODE: ALD-COO-XXX Placement: INTERIOR WEARER'S LEFT SIDE SEAM, 5" ABOVE BODY HEM Supplier: Colonial Country of Origin: CHINA	1 Piece
9		UPC Sticker CODE: UPC Placement: POLY BAG; BACK SIDE, UPPER RIGHT HAND CORNER Supplier: Factory Sourced	1
Components			9