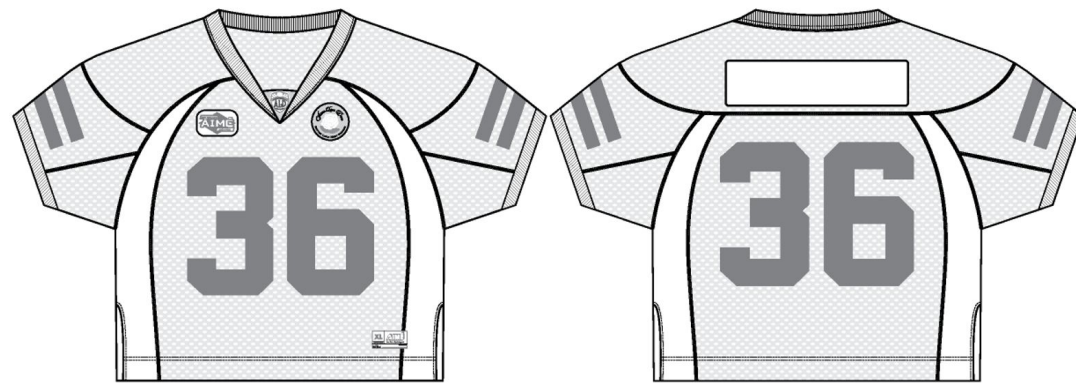


Name	Cropped Practice Jersey
Style No.	SS25CT039
Division	Mens
Category	Jerseys
Season	Spring/Summer
Year	2025
Size Scale	M -Sample size

☐XS☐S☒M☐L☐XL☐XXL

Factory	UN-AVAILABLE
Designer Name	Lonz
TD Name	Anastasiya
Created by/Author	4/18/2024 Genny Mayden genny@aimeleondore.com

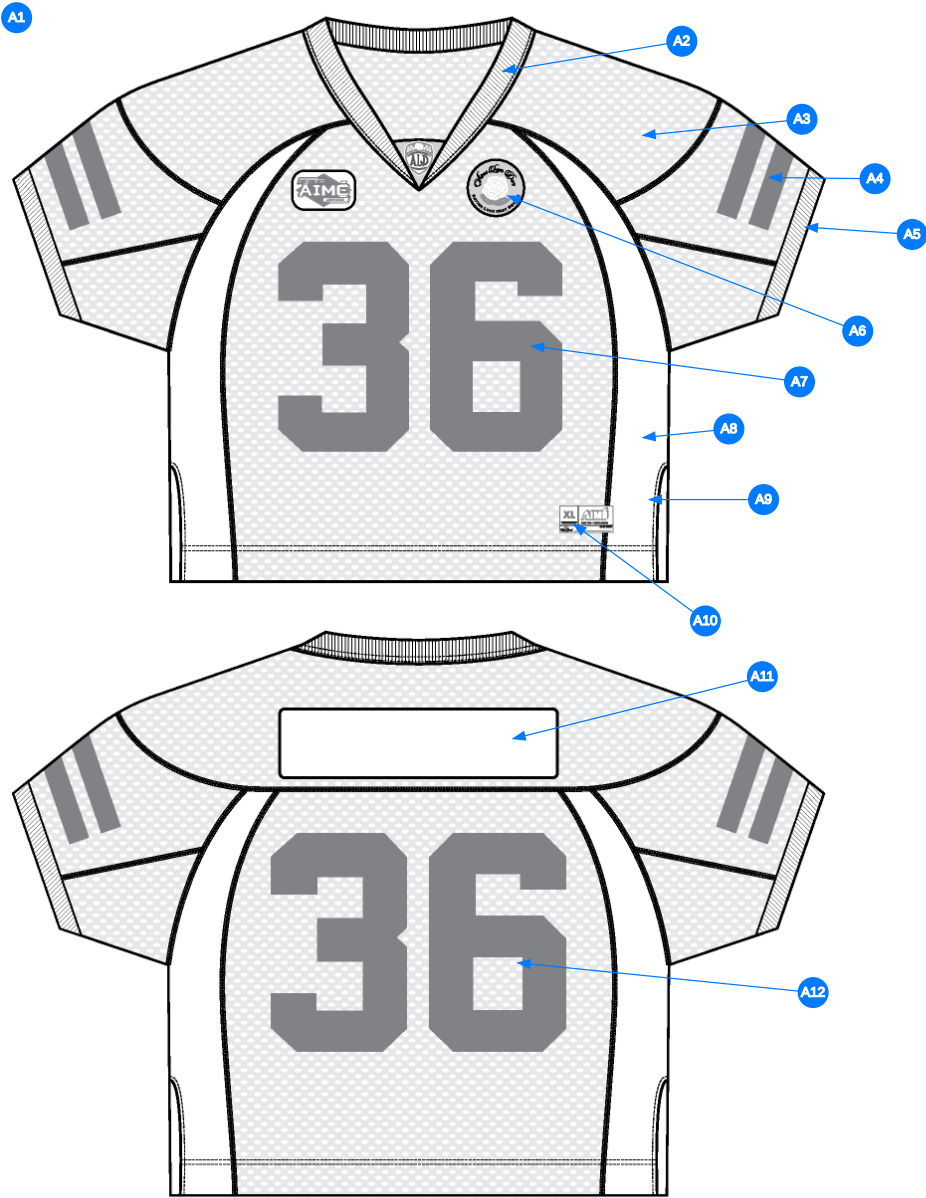
Cropped Practice Jersey



1_B&W-1



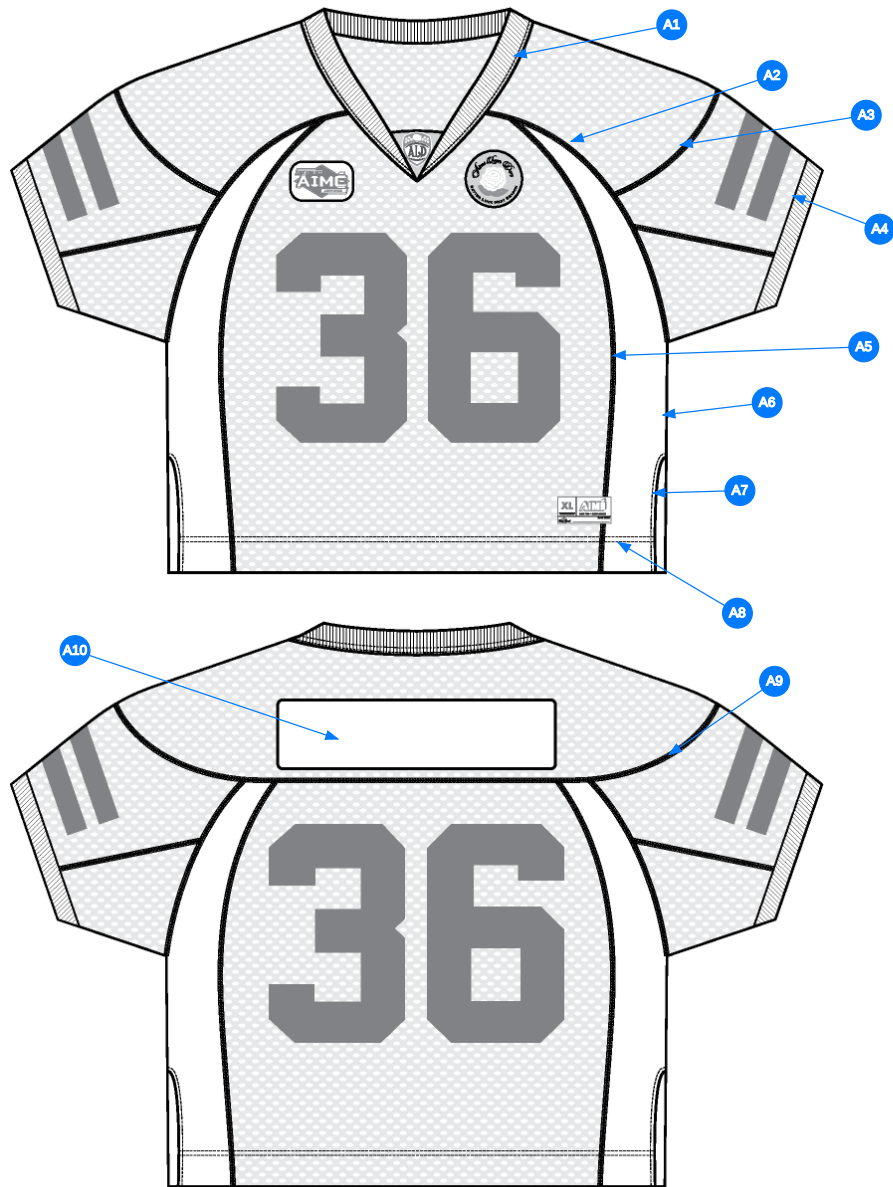
2_CLR-1



Comments (12)

- A1 FIT: LACROSSE JERSEY (SS24CS015)
- A2 1X1 RIB DOUBLED @ NECK TRIM
- A3 SET IN MESH PANEL @ SLEEVE
- A4 STRIPE ARTWORK @ SLEEVES
- A5 1X1 RIB DOUBLED @ SLEEVE
- A6 EMBROIDERED PATCH @ BODY
- A7 ARTWORK @ CF
- A8 SET IN PANEL @ SIDE SEAMS
- A9 VENT @ SIDE SEAMS
- A10 WOVEN LABEL @ BOTTOM HEM
- A11 TOP APPLIED PANEL @ BACK BODY
- A12 PRINTED ARTOWRK @ BACK BODY

3_Construction Details-1



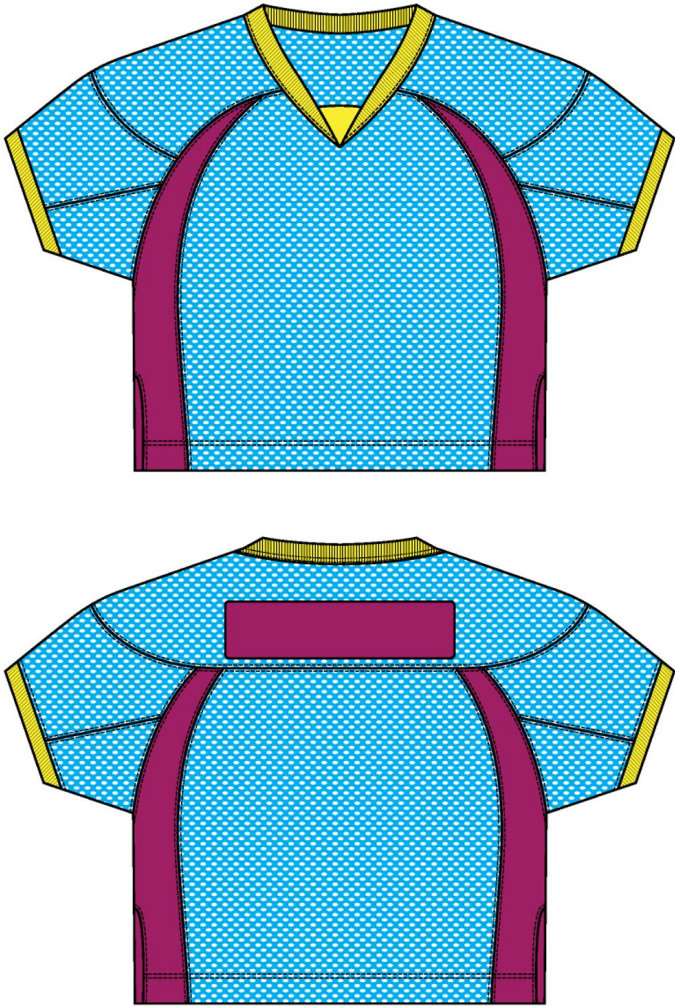
Comments (10)

- A1 STRADDLE STITCH @ NECK TRIM
- A2 OVERLOCK STITCH @ ARMHOLE
- A3 OVERLOCK STITCH @ SLEEVE PANEL
- A4 CLEAN SEAM FINISH @ SLEEVE CUFF
- A5 OVERLOCK STITCH @ FRONT BODY
- A6 CLEAN SEAM FINISH @ SIDE SEAM
- A7 1/4" SN TS @ VENT
- A8 1/4" DN TS @ BOTTOM HEM
- A9 OVERLOCK STITCH @ YOKE
- A10

4_Stitching Details-1

FABRIC MAP

- MESH #1
- MESH #2
- RIB



Fabric Map-1

Sample Size: M

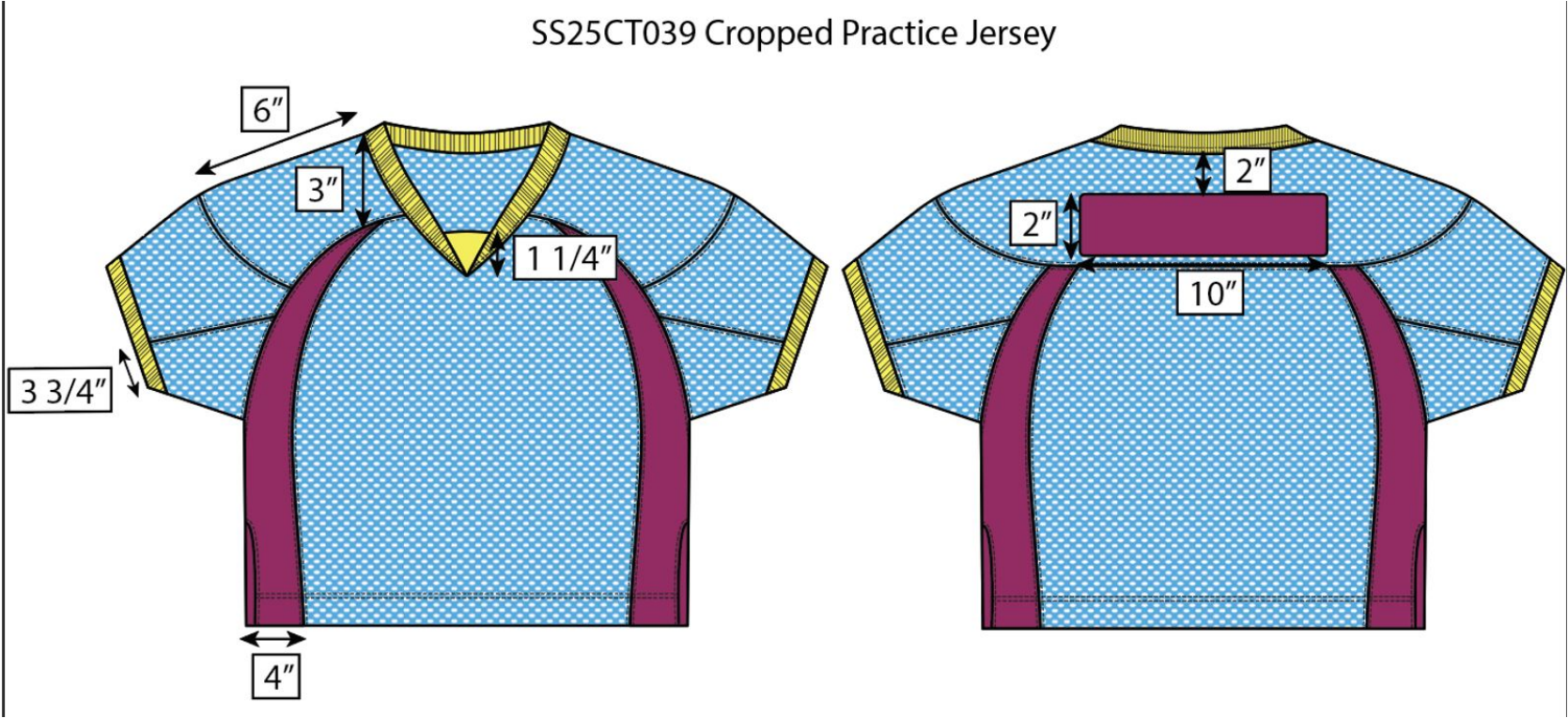
POINT OF MEASURE	CODE	HOW TO MEASURE	CRITICAL	TYPE	TOLERANCE	M
Front Body Length	S&K01	HPS to bottom edge	true	Full	1/2 in	24 1/4 in
Back Body Length	S&K02	CB neck seam to bottom edge	true	Full	1/2 in	22 3/4 in
Front Neck Drop	S&K04	HPS to neck seam	false	Full	1/8 in	7 in
Back Neck Drop	S&K05	HPS to neck seam	false	Full	1/8 in	1 1/2 in
Back Neck Width	S&K06	Seam to seam at back neck, at HPS point	false	Full	1/4 in	7 5/8 in
Neck Trim Height	S&K020	Neck Seam to trim edge	false	Full	1/8 in	7/8 in
Shoulder Slope	S&K08	9" From CB	false	Full	1/4 in	1 3/4 in
Front Raglan Seam Placement at Neck	S&K038	HPS to raglan seam along the neckline	false	Full	1/8 in	3 in
Across Front	S&K010	7" dwn from HPS, Seam Center to Seam Center (Furthest Seam)	false	Half	3/8 in	16 1/2 in
Across Back	S&K011	7" dwn from HPS, Seam Center to Seam Center (Furthest Seam)	false	Half	3/8 in	15 3/4 in
Chest Width	S&K012	At Bottom of Gusset Seam	true	Half	1/2 in	23 1/2 in
Bottom Opening Width- At Edge	S&K013	At bottom edge	true	Half	1/2 in	22 1/2 in
Bottom Hem Height	S&K014	Bottom edge to stitch line or trim seam	false	Full	1/8 in	1 in
Sleeve Length from CB Neck	S&K032	3-point measure from CB Neck to shoulder point to sleeve edge	true	Full	1/2 in	19 1/4 in
Armhole Drop	S&K016	Below Armhole Gusset Seam	false	Full	1/4 in	16 in
Sleeve Opening Width- At Edge	S&K73	At edge	false	Half	1/4 in	9 3/4 in
Armhole Hem Height	S&K019	Edge to seam- trim width	false	Full	1/8 in	1 in
Back Yoke Height	WBj9U5		true	Full	1/8 in	4 in
Side Slit Height	S&K093	From bottom edge to top of slit	false	Full	1/8 in	2 1/2 in
CF Artwork Placement below CF Neckline	S&K112		false	Full	1/8 in	2 in
WL Label Placement Up from Hem	S&K299		false	Full	1/8 in	1 1/2 in
WL Label Placement In from the Sideseam	S&K300		false	Full	1/8 in	2 in
WL Chest Artwork Placement from HPS	S&K416		true	Full	1/8 in	6 3/4 in
WL Chest Artwork Placement from CF Line	S&K417		false	Full	1/8 in	2 in
Center WR Chest Artwork to WL Chest Artwork	a1kxHQ		true	Full	0 in	0 in
CB Artwork Placement below CB Yoke Seam	S&K109	From CB neck seam to top Artwork	false	Full	1/8 in	1 1/2 in

Development Notes - Anastasiya Zolotova

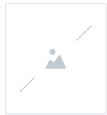
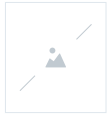
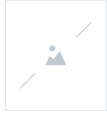
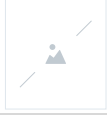

CREATED ON APR 18, 2024 6:59 PM

SS25CT039 Cropped Practice Jersey
Date: 4/18/24
Status: Requesting 1st Proto
TD: Anastasiya

Fit: Please follow pattern of SS24CS015 Lacrosse Jersey w/ updates:
-Revise style lines based on sketch and attached image
-Make hem leveled



Screen Shot 2024-04-18 at 2.58.18 PM.jpg

THUMBNAIL		COMPONENT	QTY
1		LS2023020-3 CODE: LS2023020-3 Placement: BODY Supplier: UNAVAILABLE	
2		QW33962 CODE: QW33962 Placement: SIDE PANELS, BACK NAME PATCH Supplier: UNAVAILABLE	
3		S24-FRPL01 CODE: UA Poly Rib Placement: COLLAR, SLEEVES, DORITO Supplier: UNAVAILABLE	
4		ARTWORK CODE: AS CORRESPONDING FILE Placement: ALL OVER BODY Notes: FOLLOW ARTWORK AND POM Supplier: Factory Sourced	
5		ARTWORK CODE: PATCH Placement: WL CHEST Notes: FOLLOW ARTWORK AND POM	
6		ALD Sportswear Woven Patch CODE: ALD-ML81 Placement: WL HEM Supplier: Colonial Country of Origin: CHINA	
Components			6