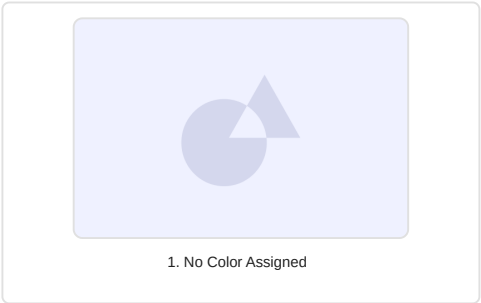
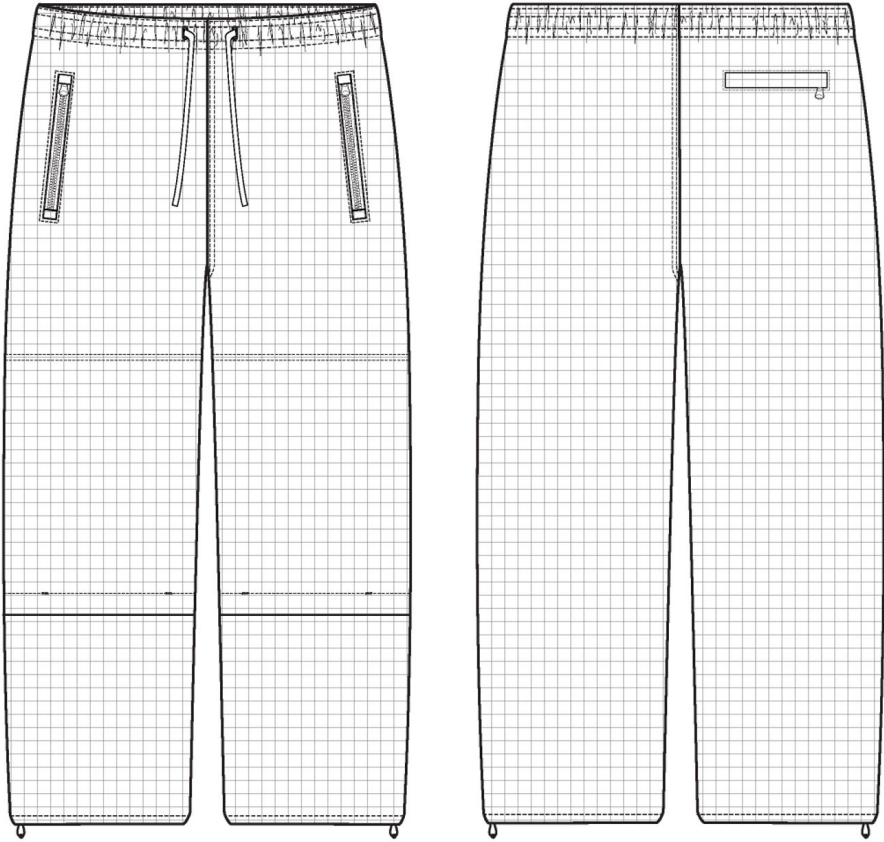


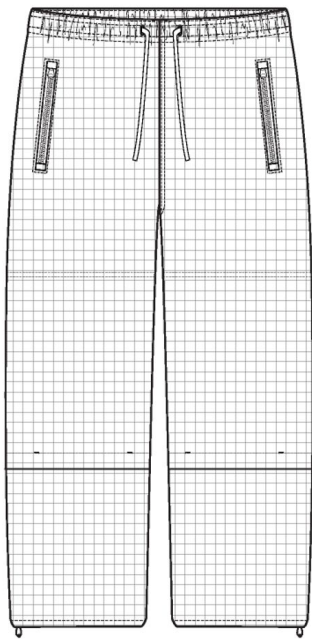
Ripstop Nylon Pant

Name	Ripstop Nylon Pant
Style No.	SS25WP008
Division	Mens
Category	Pants
Season	Spring/Summer
Year	2025
Size Scale	<div>M</div> -Sample size <div><div>XS</div><div>S</div><div>M</div><div>L</div><div>XL</div><div>XXL</div></div>
Style Status	Development
Factory	UN-AVAILABLE
Designer Name	Ben
TD Name	Kilsy
Created by/Author	4/3/2024 <div>Cristina Loukopoulos</div> <div>cristina@aimeleondore.com</div>



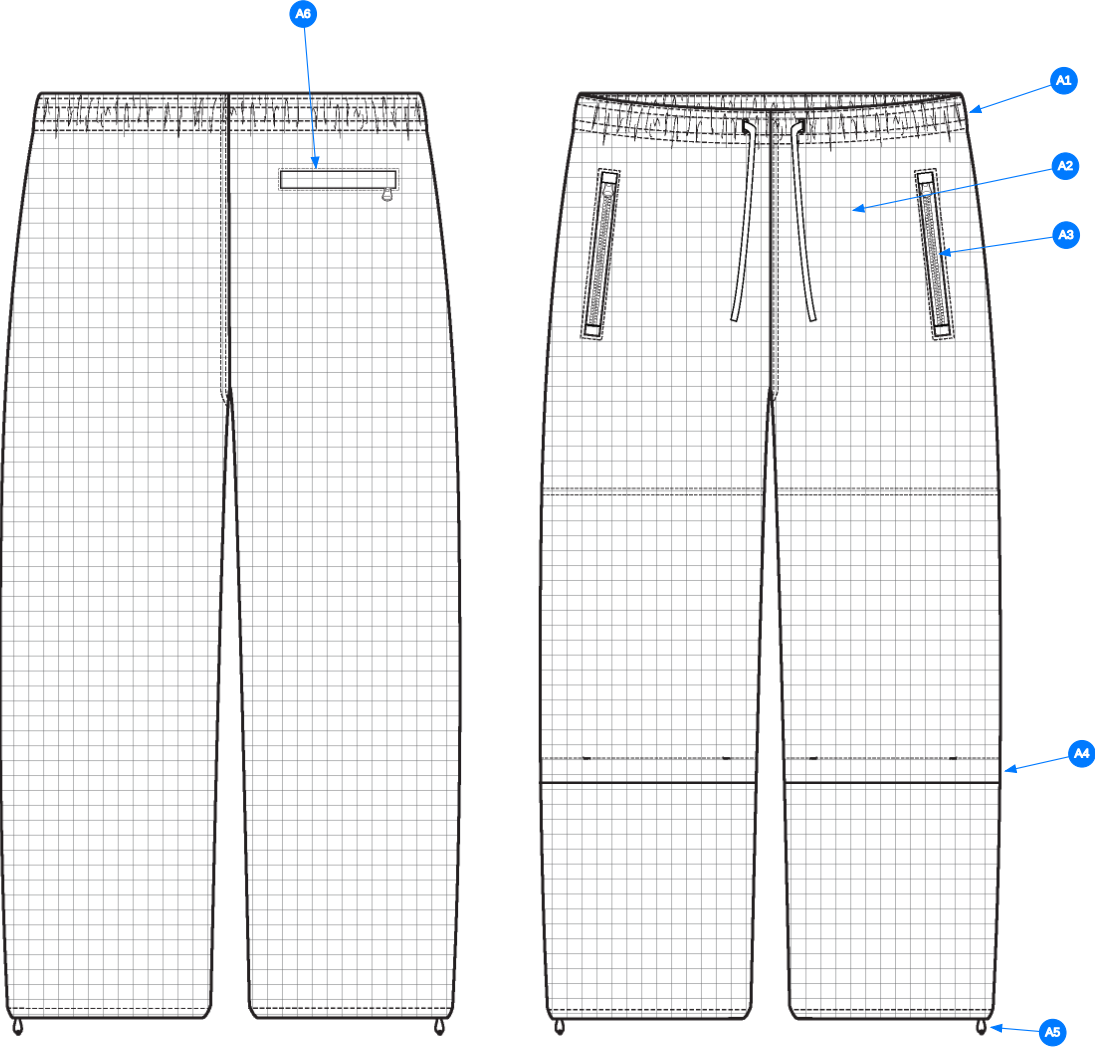


1\_B+W-1



TBD

2\_CLR-1

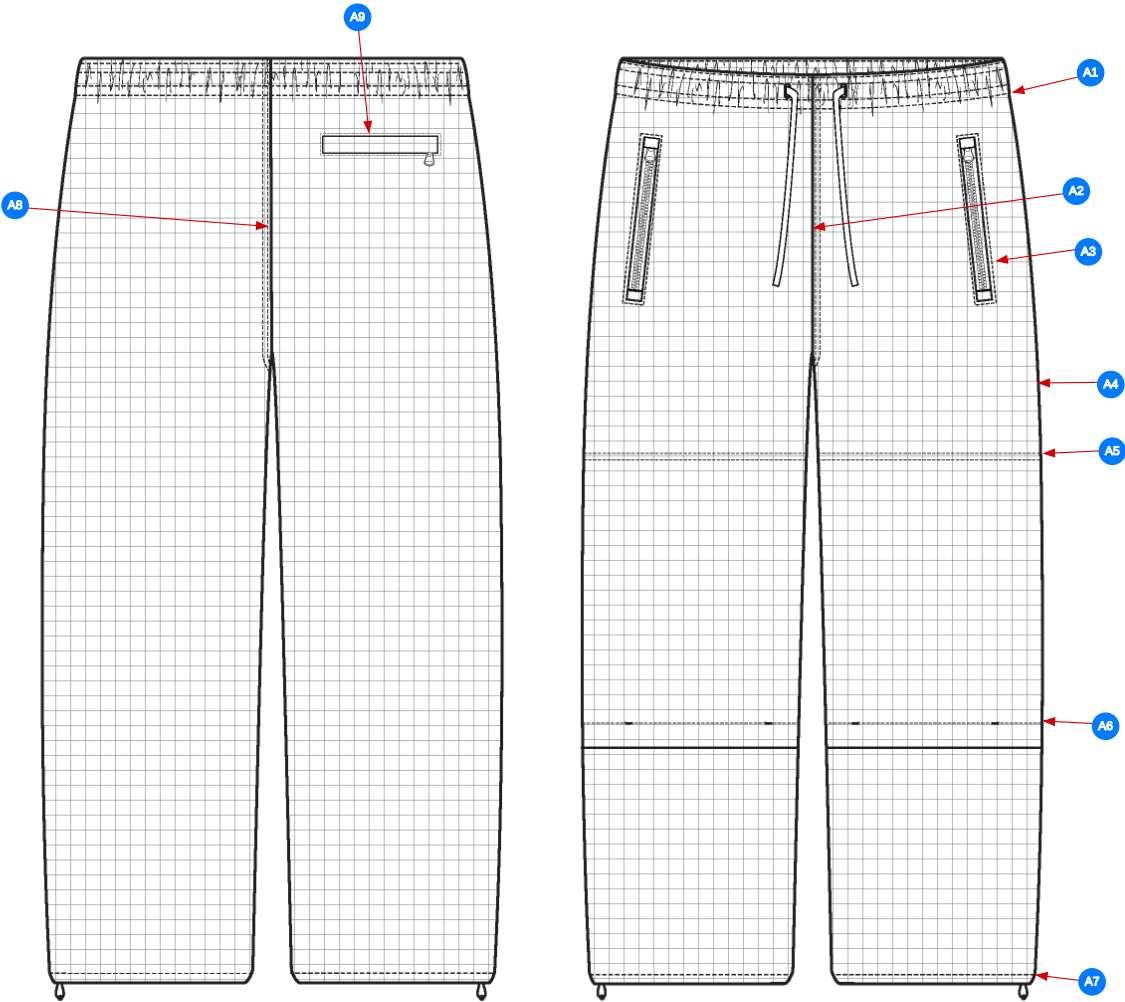


Comments (6)

- A1 GROWN ON ELASTICATED WAISTBAND w/ DRAWCORDS
- A2 HUNG MESH LINING @ BODY
- A3 DOUBLE WELT ZIPPER POCKET
- A4 OPEN VENT @ LOWER LEG
- A5 BUNGEE CORD AND CORD LOCK @ INTERIOR HEM - SEE FOLLOWING PAGES FOR DETAILS
- A6 SINGLE WELT ZIPPER POCKET

3\_CONSTRUCTION DETAILS-1

STITCHING DETAILS

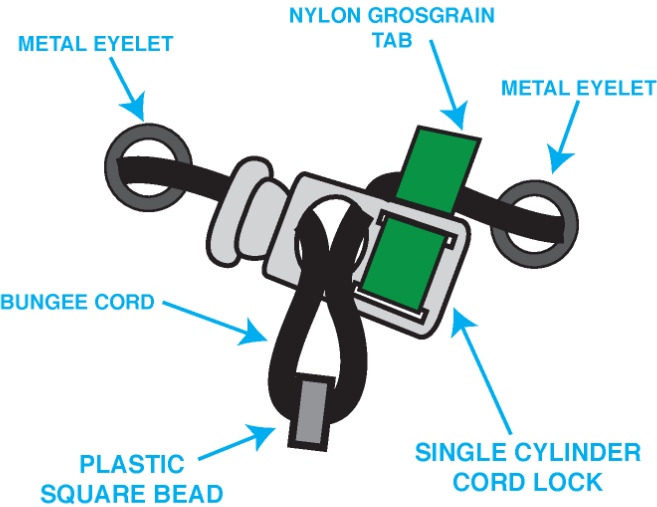


Comments (9)

- A1** SN TS @ GROWN ON WAISTBAND
- A2** 1/4" DN TS @ FRONT RISE
- A3** EDGE STITCH @ WELTS
- A4** CLEAN SEAM FINISH @ SIDE SEAM
- A5** DECORATIVE 1/4" DN TS @ LEG
- A6** 3/4" SN TS @ VENT
- A7** 1/2" SN TS @ HEM
- A8** 1/4" DN TS @ BACK RISE
- A9** EDGE STITCH @ WELT

4\_STITCHING DETAILS-1

INTERIOR BUNGEE CORD CONSTRUCTIN DETAILS



CONSTRUCTION REFERENCE



INTERIOR BUNGEE CORD CONSTRUCTION DETAILS-1

**RECTANGULAR METAL EYELET REFERENCE  
(FOR DRAWCORDS)**



EYELET REFERENCE-1



Sample Size: M

POINT OF MEASURE	CODE	HOW TO MEASURE	CRITICAL	TYPE	TOLERANCE	M
WAISTBAND TOPSTITCHING HEIGHT, TOTAL	WV		false	Full	1/8 in	1 3/4 in
WAIST CIRCUMFERENCE - RELAXED	WV102	ACROSS TOP EDGE OF WAISTBAND	true	Full	1/2 in	31 1/2 in
WAIST CIRCUMFERENCE - STRETCHED	WV103	ACROSS THE CENTER OF WAISTBAND	true	Full	1/2 in	40 in
FRONT RISE FROM CROTCH SM TO TOP EDGE	WV105	FROM FRONT CROTCH SEAM TO TOP EDGE OF FRONT WAISTBAND	true	Full	1/4 in	12 1/2 in
BACK RISE FROM CROTCH SM TO TOP EDGE	WV106	FROM BACK CROTCH SEAM TO TOP EDGE OF BACK WAISTBAND	true	Full	1/4 in	17 1/2 in
LOW HIP POSITION BELOW WB TOP EDGE	WV107	MEAS. X" DOWN FROM TOP EDGE OF WAISTBAND	true	Full	0 in	8 in
LOW HIP CIRCUMFERENCE	WV108	3PT MEAS. - FROM WR SIDE SEAM, CF, TO WL SIDE SEAM	true	Full	1/2 in	44 1/2 in
THIGH CIRC. AT 1" BELOW CROTCH SM	WV109	MEAS. AT 1" BELOW CROTCH, ACROSS TO SIDE SEAM	true	Full	1/2 in	27 1/2 in
KNEE CIRC. AT 13" BELOW CROTCH SM	wv	MEAS. AT 13" BELOW CROTCH, ACROSS TO SIDE SEAM	true	Full	1/2 in	21 3/4 in
LEG OPENING CIRC. AT BOTTOM EDGE	WV111	MEASURE AT LEG EDGE	true	Full	1/4 in	19 1/4 in
INSEAM	WV112	MEAS. ALONG THE INSEAM FROM CF CROTCH SEAM TO LEG EDGE	true	Full	1/2 in	30 in
FRONT POCKET PLACEMENT BELOW WAISTBAND TOPSTITCHING	WV		false	Full	1/4 in	3/4 in
FRONT POCKET ZIPPER LENGTH (TOTAL LENGTH INCLUDING ZIPPER GARAGE)	WV		false	Full	1/4 in	7 in
FRONT POCKET BAG LENGTH	WV121	MEAS. FROM SEAM TO POCKET BAG EDGE – FACTORY GRADE FOR PRODUCTION	false	Full	1/4 in	11 in
FRONT POCKET BAG WIDTH	WV122	MEASURE FROM SEAM TO WIDEST EDGE – FACTORY GRADE FOR PRODUCTION	false	Full	1/4 in	8 in
WAIST DRAWCORD LENGTH - TOTAL	WV104		false	Full	1 in	54 in
DRAWCORD EXIT SPACING, RELAXED	WV	MEASURE CENTER TO CENTER	false	Full	1/8 in	1 3/4 in
BACK POCKET PLACEMENT FROM CB SEAM	WV		false	Full	1/8 in	2 3/8 in
BACK POCKET PLACEMENT BELOW WAIST SEAM @ SIDE BY SIDE SEAM	WV		false	Full	1/8 in	2 in
BACK POCKET PLACEMENT BELOW WAIST SEAM @ SIDE BY CB	WV		false	Full	1/8 in	2 1/4 in
BACK POCKET OPENING LENGTH	WV	MEAS. ALONG SIDE SEAM FROM WAISTBAND SEAM	false	Full	1/8 in	5 7/8 in
BACK POCKET ZIPPER LENGTH	WV		false	Full	1/8 in	5 1/2 in
BACK POCKET WELT HEIGHT	WV		false	Full	1/8 in	5/8 in
BACK POCKET BAG LENGTH	WV	FROM SEAM TO EDGE	false	Full	1/4 in	9 1/2 in

## Development - 1st Proto Request - Kilsy Morocho

CREATED ON MAR 28, 2024 6:21 PM

Status: Submit 1st Proto

### Development Notes:

1. Overall fit and construction to follow NB24WP000 NB 1000 Pant with the following revisions:
  - a. Add a zipper garage to the top and bottom of the front pocket. The zipper garage should be wide enough for the slider to go inside the garage.
  - b. Add a decorative topstitch at the front leg as sketch. Topstitch will be placed 3 3/4" from crotch.
  - c. Keep front leg vent with bartack as fit reference.
  - d. Change to exterior drawcords.



NB24WP000 NB 1000 Pant.jpg

COMPONENT		QTY	1. NO COLOR ASSIGNED
1	<b>GQ9269</b> CODE: GQ9269 Placement: BODY / POCKET BAGS Supplier: GSI Width: 51" Weight: 140 g/m2 Country of Origin: KOREA		Not used
2	<b>IN DEV</b> CODE: TBD Placement: LINING Notes: TBD LINING QUALITY - PLEASE FOLLOW REFERENCE CUTTING AND SEND OPTIONS FOR APPROVAL		Not used
3	<b>YKK VISLON CLOSED END ZIPPER</b> CODE: TBD Placement: 1 @ EACH HAND POCKET Supplier: YKK		Not used SIZE: 5GG
4	<b>YKK Zipper Tape</b> CODE: YKK Placement: 1 @ EACH HAND POCKET ZIPPER		Not used
5	<b>YKK Branded Zipper Slider</b> CODE: DA8AED01 Placement: 1 @ EACH HAND POCKET ZIPPER Supplier: YKK Country of Origin: CHINA		Not used
6	<b>YKK VISLON CLOSED END ZIPPER</b> CODE: TBD Placement: @ BACK POCKET Supplier: YKK		Not used SIZE: 5GG
7	<b>YKK Zipper Tape</b> CODE: YKK Placement: @ BACK POCKET ZIPPER		Not used
8	<b>YKK Branded Zipper Slider</b> CODE: DA8AED01 Placement: @ BACK POCKET ZIPPER Supplier: YKK Country of Origin: CHINA		Not used
9	<b>ELASTIC BUNGEE - UA</b> CODE: ELASTIC BUNGEE - UA Placement: INTERIOR LEG HEM Supplier: UNAVAILABLE Country of Origin: VIETNAM		Not used SIZE: 4MM
10	<b>IN DEV</b> CODE: TBD Placement: 1 @ EACH LEG Notes: TBD CYLINDER CORD LOCK - PLEASE FOLLOW REFERENCE PHOTO AND SEND OPTIONS FOR APPROVAL		Not used
11	<b>IN DEV</b> CODE: TBD Placement: @ BUNGEE ENDS Notes: PLASTIC SQUARE BEAD - FOLLOW REFERENCE PHOTO AND SEND OPTIONS FOR APPROVAL		Not used
12	<b>IN DEV</b> CODE: TBD Placement: CORD CYLINDER TAB / BUNGEE STOPPERS Notes: 1/4" NYLON GROSGRAIN - PLEASE SEND OPTIONS FOR APPROVAL		Not used
13	<b>METAL EYELET - UA</b> CODE: METAL EYELET - UA Placement: 2 @ EACH LEG Supplier: UNAVAILABLE Country of Origin: VIETNAM		Not used SIZE: 21L
14	<b>FLAT POLY BRAIDED DRAWCORD - UA</b> CODE: FLAT POLY BRAIDED DRAWCORD - UA Placement: INTERIOR WB Notes: 1/4" Supplier: UNAVAILABLE		Not used
15	<b>IN DEV</b> CODE: TBD Placement: DRAWCORD EXITS Notes: RECTANGULAR METAL EYELET - FOLLOW REFERENCE PHOTO AND PLEASE SOURCE LOCAL OPTIONS FOR APPROVAL		Not used
Components 15			Total 0.00