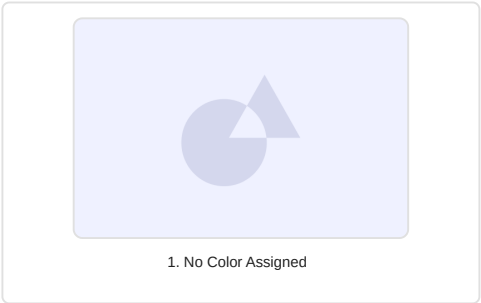
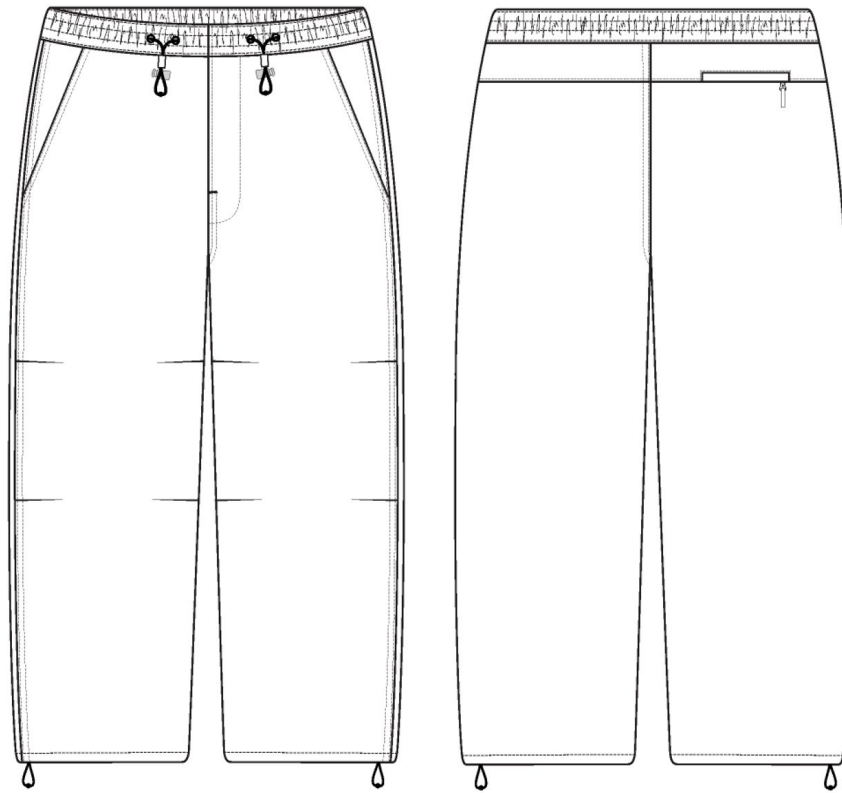


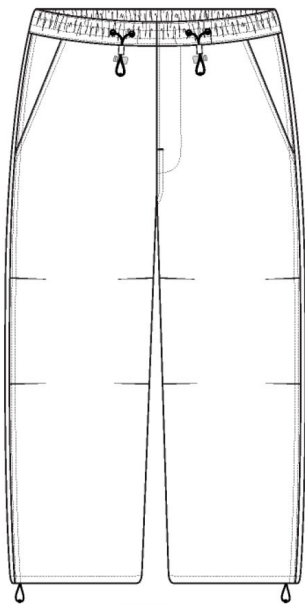
Parachute Pant

Name	Parachute Pant
Style No.	SS25WP013
Division	Mens
Category	Pants
Season	Spring/Summer
Year	2025
Size Scale	<div>M</div> -Sample size <div><div>XS</div><div>S</div><div>M</div><div>L</div><div>XL</div><div>XXL</div></div>
Style Status	Development
Designer Name	Ben
TD Name	Kilsy
Created by/Author	5/1/2024 <div>Cristina Loukopoulos</div> <div>cristina@aimeleondore.com</div>



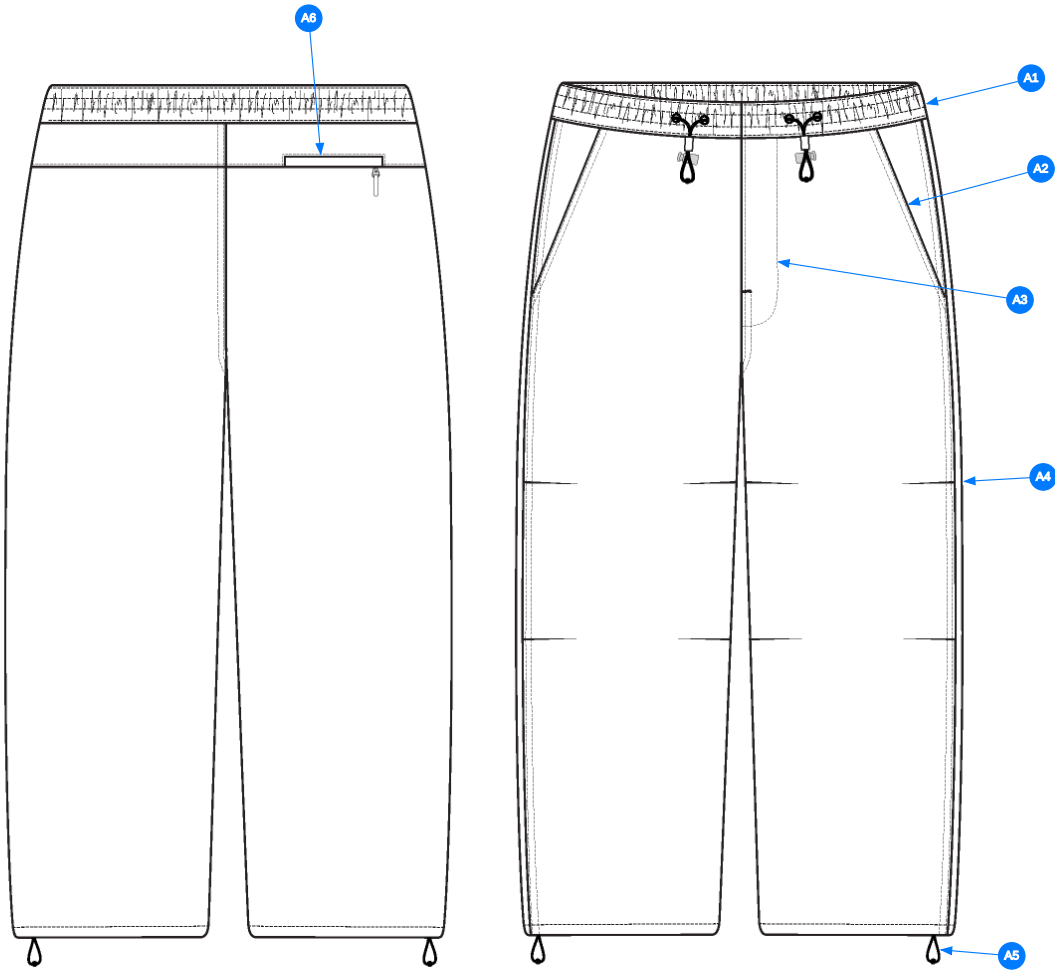


1\_B+W-1



TBD

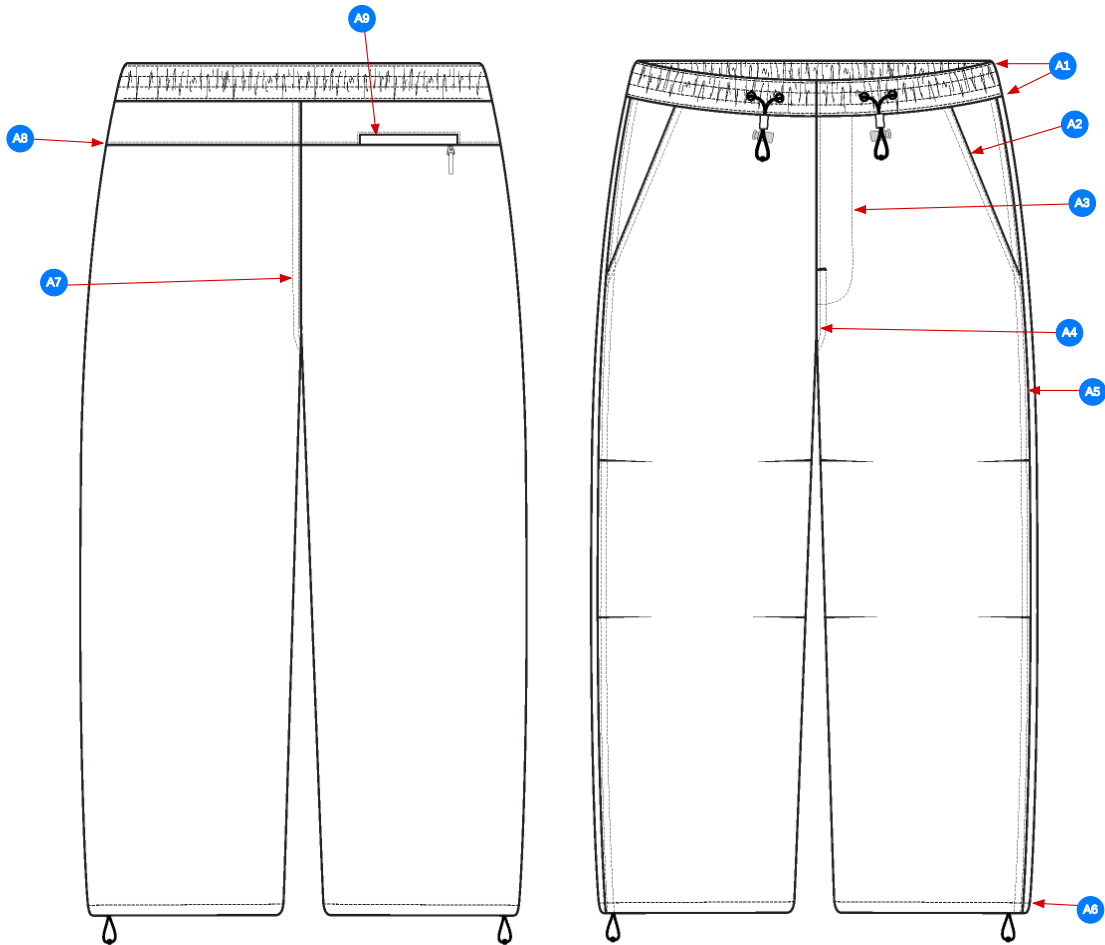
2\_CLR-1



- Comments (6)
- A1** ELASTICATED PIECED ON WAISTBAND w/ BUNGEE CORD AND CORD LOCKS - SEE FOLLOWING PAGES FOR DETAILS
  - A2** SLANTED HAND POCKETS
  - A3** FAUX J-STITCH
  - A4** PLEATS ON FRONT LEGS - 4x PLEATS @ EACH LEG
  - A5** BUNGEE CORD AND CORD LOCKS @ INTERIOR HEM
  - A6** SINGLE WELT ZIPPER POCKET

3\_CONSTRUCTION DETAILS-1

STITCHING DETAILS

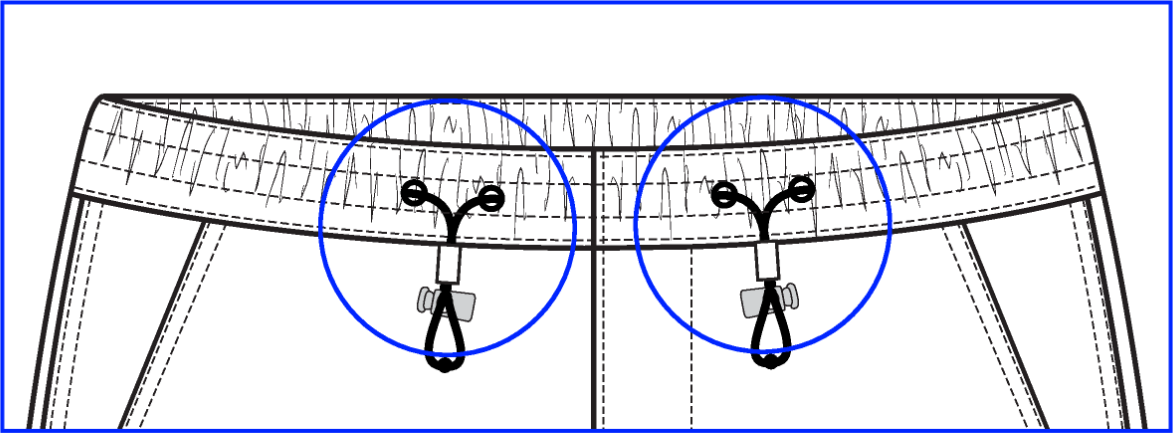
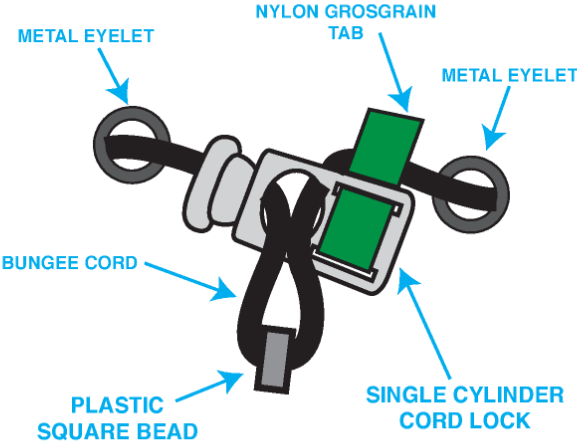


Comments (9)

- A1 EDGE STITCH @ TOP AND BOTTOM WAISTBAND EDGES
- A2 1/4" DN TS @ POCKET HEM
- A3 SN TS @ FAUX J-STITCH
- A4 1/4" DN TS @ FRONT RISE
- A5 1/4" DN TS @ SIDE SEAM
- A6 1/2" SN TS @ HEM
- A7 1/4" DN TS @ BACK RISE
- A8 EDGE STITCH @ SET IN BODY SEAM
- A9 EDGE STITCH @ WELT

4\_STITCHING DETAILS-1

# BUNGEE CORD CONSTRUCTION



WAISTBAND CONSTRUCTION DETAILS-1

Sample Size: M

POINT OF MEASURE	CODE	HOW TO MEASURE	CRITICAL	TYPE	TOLERANCE	M
WAISTBAND HEIGHT	WV101		true	Full	1/8 in	1 3/4 in
WAIST CIRCUMFERENCE - RELAXED	WV102	ACROSS TOP EDGE OF WAISTBAND	true	Full	1/2 in	31 1/2 in
WAIST CIRCUMFERENCE - STRETCHED	WV103	ACROSS THE CENTER OF WAISTBAND	true	Full	1/2 in	41 in
FRONT RISE FROM CROTCH SM TO TOP EDGE	WV105	FROM FRONT CROTCH SEAM TO TOP EDGE OF FRONT WAISTBAND	true	Full	1/4 in	13 1/4 in
BACK RISE FROM CROTCH SM TO TOP EDGE	WV106	FROM BACK CROTCH SEAM TO TOP EDGE OF BACK WAISTBAND	true	Full	1/4 in	17 1/2 in
LOW HIP POSITION BELOW WB TOP EDGE	WV107	MEAS. X" DOWN FROM TOP EDGE OF WAISTBAND	true	Full	0 in	8 in
LOW HIP CIRCUMFERENCE	WV108	3PT MEAS. - FROM WR SIDE SEAM, CF, TO WL SIDE SEAM	true	Full	1/2 in	45 in
THIGH CIRC. AT 1" BELOW CROTCH SM	WV109	MEAS. AT 1" BELOW CROTCH, ACROSS TO SIDE SEAM	true	Full	1/2 in	28 7/8 in
KNEE CIRC. AT 13" BELOW CROTCH SM	wv	MEAS. AT 13" BELOW CROTCH, ACROSS TO SIDE SEAM	true	Full	1/2 in	24 1/8 in
LEG OPENING CIRC. AT BOTTOM EDGE	WV111	MEASURE AT LEG EDGE	true	Full	1/4 in	20 3/4 in
INSEAM	WV112	MEAS. ALONG THE INSEAM FROM CF CROTCH SEAM TO LEG EDGE	true	Full	1/2 in	30 in
"J" STITCH LENGTH AT CF (DECORATIVE)	WV114	MEASURE FROM WAISTBAND TOPSTITCH	false	Full	1/4 in	6 in
"J" STITCH WIDTH (DECORATIVE)	WV115		false	Full	1/8 in	1 1/2 in
FRONT POCKET PLACEMENT FROM SIDE SEAM - RELAXED	WV	WVPKT	false	Full	1/8 in	1 1/2 in
FRONT POCKET OPENING FROM WAIST SEAM ALONG SIDE SEAM	WV		false	Full	1/8 in	6 1/2 in
FRONT POCKET BAG LENGTH	WV121	MEAS. FROM SEAM TO POCKET BAG EDGE – FACTORY GRADE FOR PRODUCTION	false	Full	1/4 in	11 in
FRONT POCKET BAG WIDTH	WV122	MEASURE FROM SEAM TO WIDEST EDGE – FACTORY GRADE FOR PRODUCTION	false	Full	1/4 in	8 in
BACK YOKE HEIGHT AT SIDE SEAM	WVBOTTOMS	MEASURE ALONG SIDE SEAM FROM THE WAISTBAND TOPSTITCH	false	Full	1/4 in	2 1/2 in
BACK YOKE HEIGHT AT CB	WVBOTTOMS	MEASURE ALONG CB FROM THE WAISTBAND TOPSTITCH	false	Full	1/4 in	2 1/2 in
BACK POCKET PLACEMENT FROM CB SEAM	WV124	FROM CB TO EDGE OF POCKET CLOSEST TO CB	false	Full	1/8 in	2 3/8 in
BACK POCKET OPENING LENGTH	WV127		false	Full	1/4 in	5 3/4 in
BACK POCKET ZIPPER LENGTH	WV		false	Full	1/4 in	5 1/2 in
BACK POCKET WELT HEIGHT	WV		false	Full	1/8 in	3/4 in
BACK POCKET BAG LENGTH	WV	FROM SEAM TO EDGE	false	Full	1/4 in	7 1/2 in
WAIST DRAWCORD LENGTH - TOTAL	WV104		false	Full	1 in	54 in



## Development - 1st Proto Request - Kilsy Morocho

CREATED ON APR 12, 2024 5:20 PM

Status: Submit 1st Proto

### Development Notes:

1. Create a pattern based on SS24WP010 Core Nylon Pant with the following adjustments:
  - a. Increase waist circumference (extended), front/back rise and low hip, thigh, knee, and leg opening circumference. See revised specs.
  - b. Change to pieced on waistband.
  - c. Change to front slash pockets.
  - d. Add a total of x4 pleats on each front leg as per sketch.
    - i. Please place these proportional to sketch and help advise depth and we will review upon 1st proto.
  - e. Re-angle the back yoke as per sketch. Back yoke height has been revised.
  - f. Remove back leg inset.

### \*INTERNAL NOTES\*

1. *Fit base: Major body measurements taken from SS24WP010 Branded Parachute Pant.*

COMPONENT		QTY	1. NO COLOR ASSIGNED
1	<b>W3930</b> CODE: W3930 Placement: BODY Supplier: UNAVAILABLE Width: 144 CM Weight: 110GSM Country of Origin: VIETNAM		Not used
2	<b>ELASTIC</b> CODE: ELASTIC Placement: INTERIOR WB Supplier: Factory Sourced		Not used WIDTH: 1 3/4"
3	<b>YKK COIL CLOSED END ZIPPER</b> CODE: TBD Placement: @ BACK POCKET Supplier: YKK		Not used SIZE: 5GG
4	<b>YKK Zipper Tape</b> CODE: YKK Placement: @ BACK POCKET ZIPPER		Not used
5	<b>YKK Branded Zipper Slider</b> CODE: DA8AED01 Placement: @ BACK POCKET ZIPPER Supplier: YKK Country of Origin: CHINA		Not used
6	<b>ELASTIC BUNGEE - UA</b> CODE: ELASTIC BUNGEE - UA Placement: @ INTERIOR HEM Supplier: UNAVAILABLE Country of Origin: VIETNAM		Not used SIZE: 4MM
7	<b>IN DEV</b> CODE: TBD Placement: DRAWCORD ENDS Notes: SINGLE CYLINDER CORD LOCK - SEND OPTIONS FOR APPROVAL		Not used
8	<b>IN DEV</b> CODE: TBD Placement: DRAWCORD ENDS Notes: PLASTIC SQUARE BEAD - SEND OPTIONS FOR APPROVAL		Not used
9	<b>IN DEV</b> CODE: TBD Placement: CYLINDER CORD LOCK Notes: 1/4" NYLON GROSGRAIN TAB		Not used
10	<b>METAL EYELET - UA</b> CODE: METAL EYELET - UA Placement: 4 @ WB / 1 @ EACH INTERIOR HEM Supplier: UNAVAILABLE Country of Origin: VIETNAM		Not used SIZE: 21L
Components		10	Total 0.00