

DROP 2



DROP 2



Barbour	SUPPLIER: UN-AVAILABLE	SEASON: SS27 MAIN	RANGE: HERITAGE SELECT	ISSUE DATE: 09/12/25	VERSION: V1	CATEGORY: OVER LAYERS	PROTO NUMBER: 10025440	DESIGN REFERENCE: BARBOUR ERIKA SWEATSHIRT 10025440
----------------	----------------------------------	-----------------------------	----------------------------------	--------------------------------	-----------------------	---------------------------------	----------------------------------	---

BLOCK REF: JAPAN SWEATSHIRT SAMPLE + AMENDS / SS27 BARBOUR SWEATSHIRT 10024553

PROTO/ SAMPLE SIZE: SMALL

FABRICS:	
MAIN FABRIC COMPOSITION	:RE: FRENCH TERRY, S0162, 440 GSM :100% BCI COTTON
RIB COMPOSITION	: 2X2 RIB, S0162, 445 GSM :97% BCI COTTON, 3% ELASTANE
WASH	:
PROFILE STITCHING	:DTM GROUND

TRIMS:

BACK NECK TAPE: 1CM BARBOUR BLOCK BACK NECK TAPE
RM 11339

SIDE TAB: X

LABEL: BARBOUR 1 CREST CLOTHING LOOP LABEL
CREAM/GOLD RM 11709

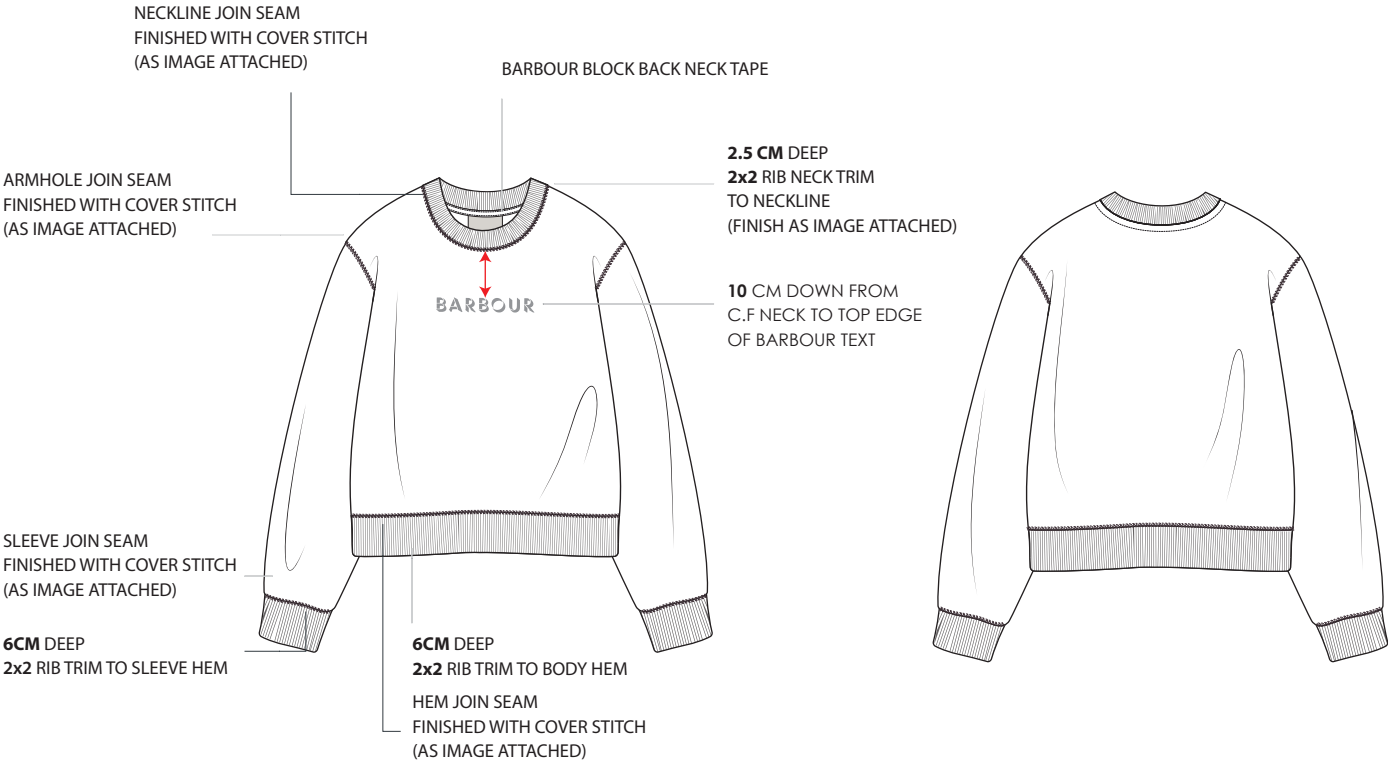
SIZE TAB: CREAM/GOLD

SWING TICKET	
PRIMARY TICKET:	1 CREST BARBOUR PRIMARY SWING + GREEN PAPER STRING / 5876 / BARB
STORY TICKET:	X
DISCLAIMER:	X

VERSION HISTORY:

09/12/25 SIMA: INITIAL SPEC CREATED
11/12/25 SIMA: RIB SIZE CORRECTED TO 2X2, AS ON ORIGINAL HANGER
05/01/25 SIMA: "SOFTNER WASH" REMOVED FROM SPEC
09/01/25 SIMA: GREY MARL COLOURWAY ADDED
EMBROIDERY ARTWORK UPDATED TO SPEC
13/01/25 SIMA: GREY MARL STANDARD CODE ADDED

IMPORTANT Barbour strictly prohibits any type of forced or child labour in our supply chain, regardless of the country or region. All suppliers must be able to prove the origin and provide traceability of materials in Barbour products. Fabrics/components must not be presented to Barbour or used in Barbour products that do not meet this requirement. Please check with your usual Barbour contact if you are unsure about anything contained in this statement.

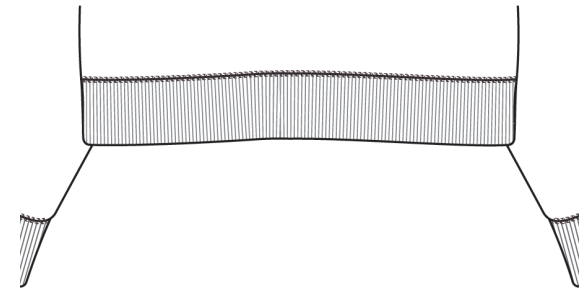


PLEASE SUBMIT LOGO EMBROIDERYS AS STRIKE OFFS FOR APPROVAL

COLOUR NAME:	RIB TRIM:	BNT:	
BLACK 19-4005 TCX	DTM JERSEY GROUND	BLACK TAPE / WHITE TEXT	
GREY MARL DANX D016C	DTM JERSEY GROUND	WHITE TAPE / BLACK TEXT	

CONSTRUCTION:

NEAT COVER STITCH FINISH OVER JOIN SEAMS AT NECKLINE, ARMHOLES,
SLEEVE & BODY HEM



RIB TO LIE FLATTER, NOT TAPER IN TOO MUCH AT LOWER EDGE

UnAvailable[®]
[SWATCH] CARD

Customer : BARDALE Ref : 44752872

Mean : French Terry 200 Cotton 140Gsm
- Rib 2 x 2 - 317 Gs 3/4 Spinn 140 Gsm -
@ 300-200



④ Quality approved for proto sample

A photograph of a white cardboard box for Banx socks. The box is oriented horizontally. On the right side, the brand name "Banx" is printed in large, bold, red letters. Below it, "100% COMBED COTTON" is printed in black. A central window shows a grey, textured sock. To the left of the window, "D016C" is printed in black. On the bottom left, "VOL.01-3" and "03-2" are printed in red.



STRIKE OFF 1



PANTONE
BLACK
19-4005 TCX




PANTONE
WHITE
11-0601 TCX

WHITE THREAD AS USED
FOR STRIKE OFF
SUBMISSIONS FOR
JACQUELINE TSHIRT



GREY MARL



PANTONE
WHITE
11-0601 TCX

WHITE THREAD AS USED
FOR STRIKE OFF
SUBMISSIONS FOR
JACQUELINE TSHIRT

EMBROIDERY TECHNIQUE TO BE THE SAME AS APPROVED FOR 10025435 JACQUELINE TSHIRT



