





FIT/SPEC REFERENCE

FABRIC(S)

COLORWAY FABRIC AND TRIMS CHART

[illegible]

HMP DOUBLE UP SWEATSHORT EXTERIOR CONSTRUCTION DETAILS

RIB AT WAISTBAND IS DOUBLED AND BOTH LAYERS ARE SET TO WAIST SEAM AT THE SAME TIME; INTERIOR RIB (RED) EXTENDS 3/8" PASSED EDGE OF EXTERIOR RIB



REFERENCE IMAGE OF SAME TECHNIQUE

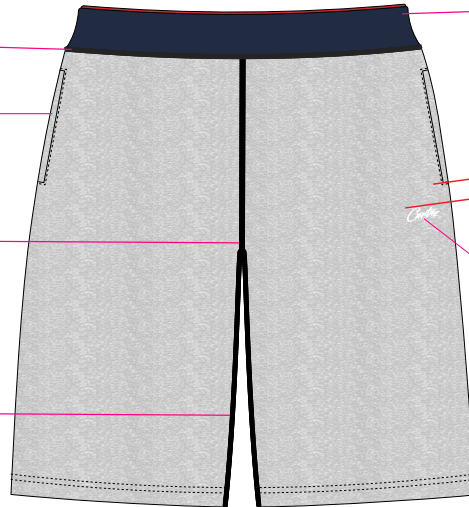
WAISTBAND: DOUBLED RIB WB
W/ INTERIOR DRAWCORD
CHANNEL
- **2.5" WB RIB HEIGHT**
- INTERIOR STITCHED EYELETS
- ROUND ROPE DRAWCORD

RIB SET TO WAISTBAND WITH 4TH OVLK + REVERSE COVERSTITCH

FRONT PKTS: ON SEAM HAND
POCKETS WITH 1/4" SNTS
POCKET BAGS IN SELF FABRIC

FRONT RISE FINISHED W/
4TH OVLK + REVERSE
COVERSTITCH

INSEAM FINISHED W/
4TH OVLK + REVERSE
COVERSTITCH



DIRECT EMBROIDERY
*** ALIGN EDGE OF THE ARTWORK WITH
THE INSIDE EDGE OF WELT POCKET ***

BACK RISE FINISHED W/
4TH OVLK + REVERSE
COVERSTITCH

WELT POCKET: WEARER'S BACK RIGHT 1"
SINGLE WELT POCKET + E/S AROUND

WOVEN PATCH LABEL BELOW WR BACK WELT POCKET,
STITCHED DOWN AT ALL SIDES WITH 1-NDL EDGESTITCH
- PLACED 0.5" FROM BOTTOM EDGE OF POCKET, CENTERED



3/4" HEM TURNUNDER FINISHED W/
1/4" TWIN-NDL COVERSTITCH

DIRECT EMBROIDERY @ WL LEG
100% ACTUAL SIZE
*SEE DRAWING FOR EXACT PLACEMENT

PLEASE NOTE GREY BOX IS NOT PART OF ARTWORK



COLORWAY 1

THREAD COLOR 11-4800 TPG

****FACTORY TO DEVELOP****

WOVEN LABEL BELOW IS 100% ACTUAL SIZE

**THREAD COLORS**
BASE

CREAM (12-0605 TCX)






STARS

RED (17-1563 TCX)

TEXT / BRAND LOGO



CORTEIZ
TRIM CHART

CODE	NAME	IMAGE	PLACEMENT	QTY
-----	FACTORY DEVELOPED CORTEIZ BRAND: CARE/CONTENT SATIN LOOP LABEL		INTERIOR - WEARER'S LEFT SIDE SEAM	1
-----	**LABEL LAYOUT PROVIDED BY BRAND FACTORY TO DEVELOP STICKERS** BARCODE STICKER LABEL		ON EXTERIOR RIGHT LOWER CORNER OF GARMENT POLY BAG	1
-----	FACTORY DEVELOPED CORTEIZ "HMP" WOVEN CENTER FOLD LABEL		INTERIOR CENTER BACK NECK -OR- CENTER BACK INTERIOR WAISTBAND	1
-----	FACTORY DEVELOPED POLY BAG (100% RECYCLED) 370mmX470mm_CORTEIZ		FOLD GARMENT AND ENCLOSE IN POLY BAG	1
	FACTORY DEVELOPED CORTEIZ "HMP" WOVEN PATCH LABEL		CB NECK 1" BELOW SEAM	1

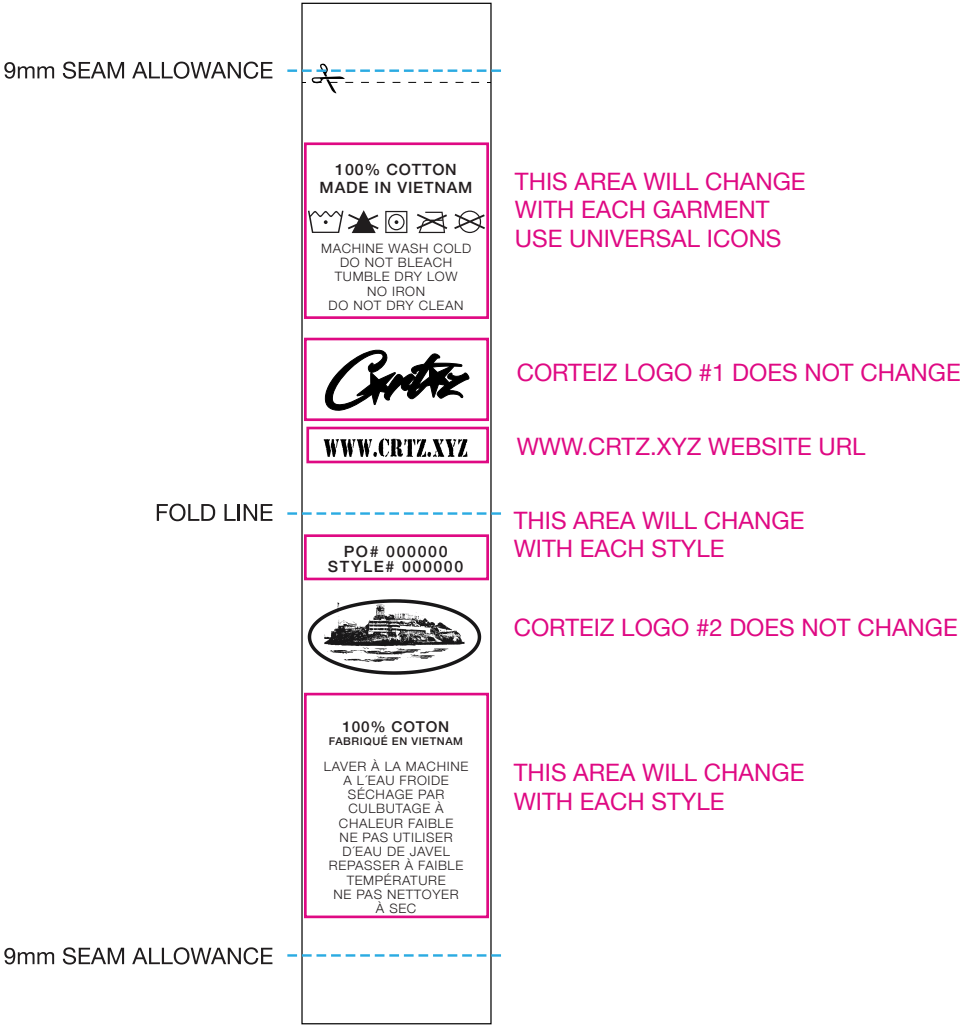


CORTEIZ - 2025

CARE/CONTENT/COO LABEL + BARCODE STICKERS

SATIN LABEL
1 COLOR PRINT IN BLACK
135mm x 25mm

PLEASE NOTE HEIGHT OF LABEL MAY CHANGE
DEPENDING ON AMOUNT OF WASH INSTRUCTIONS
THIS IS ONLY A MOCK UP



BARCODE STICKERS *LAYOUT PROVIDED BY BRAND*
- LABEL GUIDELINES
***FOR USE ON OUTSIDE OF POLY BAG**



PLACEMENT EXAMPLE



FACTORY TO DEVELOP

