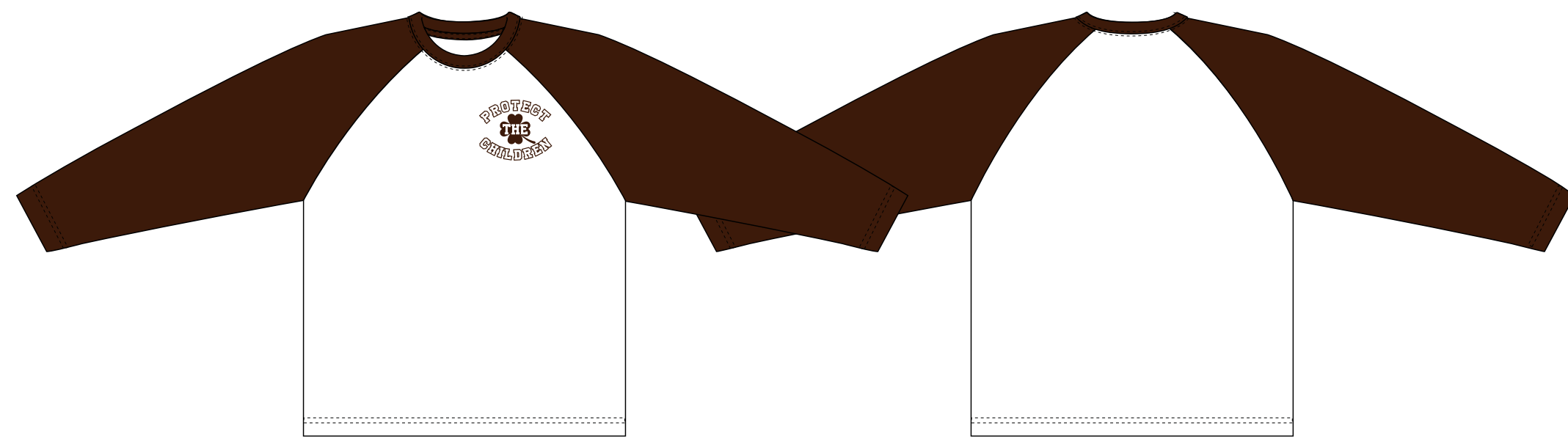


BLACK



MAROON



# PROTECT THE CHILDREN RAGLAN LS

## PRODUCT INFORMATION

### SEASON : 2026

STYLE NO.	CRTZ_1827	VENDOR	UNAVAILABLE
STYLE NAME	PROTECT THE CHILDREN RAGLAN LS	CATEGORY	JERSEY
DESIGNER	AD	SIZE RUN	S, M, L, XL, XXL

### FIT/STYLE REFERENCE

SEASON	STYLE NO.	STYLE NAME	REFERENCE DETAIL
2025	CRTZ_1612	SOPHOMORE RAGLAN LS	SPEC, SEW GUIDE, FABRIC

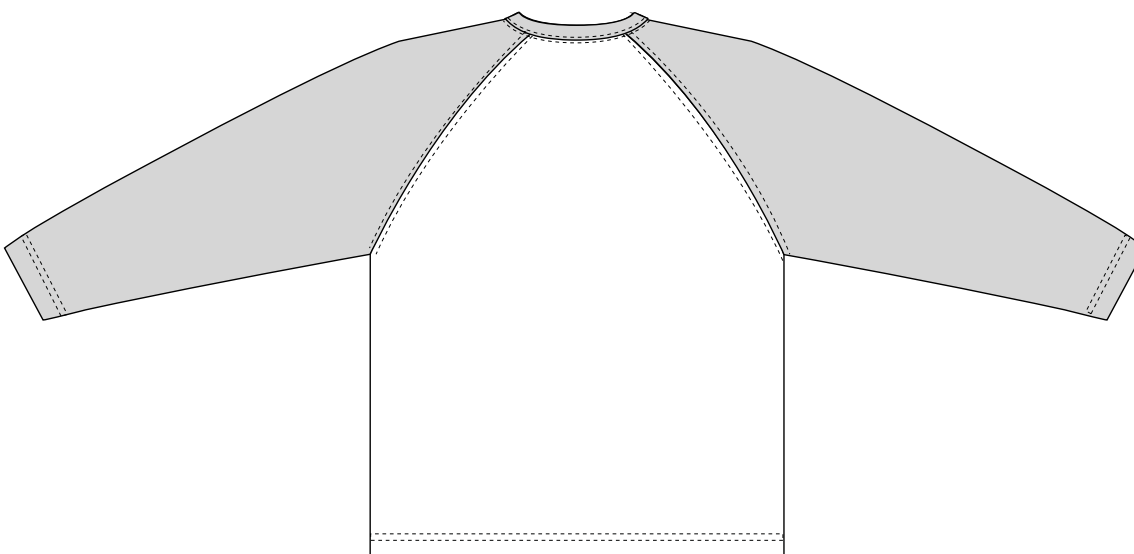
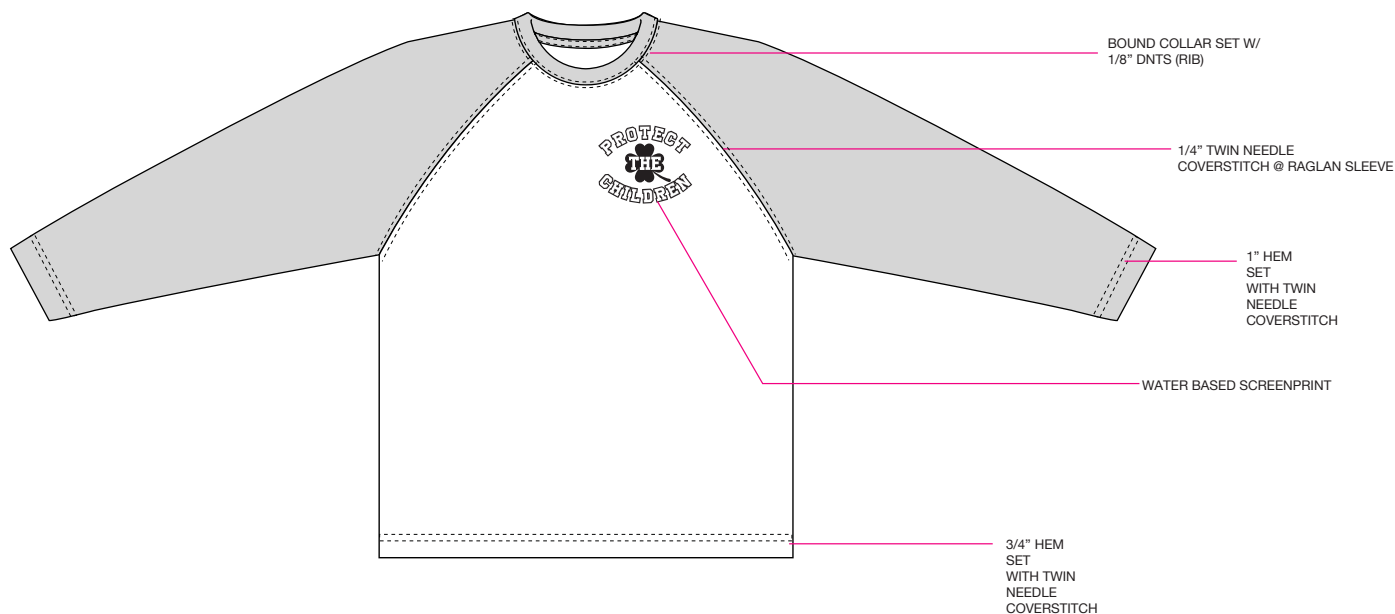
### FABRIC(S)

MAIN BODY	100% COTTON (190 GSM)	WASH	30 MIN GARMENT WASH
RIBBING	1x1 RIBBING		
EMBELLISHMENT	WATER BASED SCREENPRINT		

### COLORWAY FABRIC AND TRIMS CHART

	COLORWAY 1	COLORWAY 2	COLORWAY 3
COLORWAY	BLACK	MAROON	
MAIN BODY (BASE)	WHITE "BLANK TEE" BASE STOCK FABRIC	WHITE "BLANK TEE" BASE STOCK FABRIC	
SLEEVES	STOCK/AVAILABLE BLACK	A ) 19-1627 TCX B ) 19-1725 TCX C) 19-1317 TCX	
COLLAR (RIB)	DTM BODY	DTM BODY	
THREAD	DTM GROUND	DTM GROUND	
SCREENPRINT COLOR	BLACK	DTM SLEEVES	

**\*PLEASE HAVE PRINT TECHNICIAN USE THEIR BEST SUGGESTIONS  
FOR PLACEMENT BASED ON DRAWING\***



WATER BASED SCREENPRINT @ WL CHEST  
ARTWORK IS 100% TO SCALE

\*GREY BOX IS NOT A PART OF ARTWORK\*



---

12CM WIDE

\*PLEASE HAVE PRINT TECHNICIAN USE THEIR BEST SUGGESTIONS  
FOR PLACEMENT BASED ON DRAWING\*





CENTER FOLD DAMASK WOVEN LABEL  
SHOWN @ 100% ACTUAL SCALE

**\*PLEASE ADD APPROPRIATE SEAM ALLOWANCE FOR GARMENT\***



- METALLIC/GLITTER FINISH SILVER
- BLACK
- 18-6026 TCX
- 19-3954 TCX
- 17-1462 TCX

REFERENCE IMAGES FOR METALLIC/GLITTER SILVER FINISH;  
MATCH BELOW:





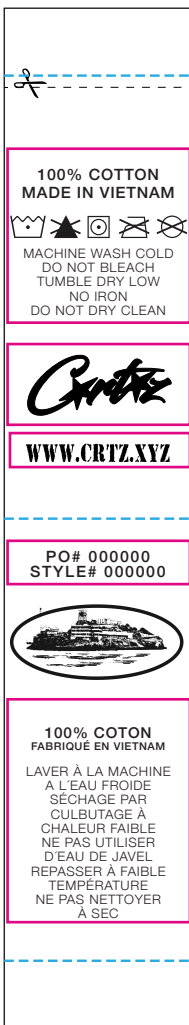
**CORTEIZ - 2025**

**CARE/CONTENT/COO LABEL + BARCODE STICKERS**

**SATIN LABEL**  
**1 COLOR PRINT IN BLACK**  
**135mm x 25mm**

**PLEASE NOTE HEIGHT OF LABEL MAY CHANGE**  
**DEPENDING ON AMOUNT OF WASH INSTRUCTIONS**  
**THIS IS ONLY A MOCK UP**

9mm SEAM ALLOWANCE



**THIS AREA WILL CHANGE**  
**WITH EACH GARMENT**  
**USE UNIVERSAL ICONS**

**CORTEIZ LOGO #1 DOES NOT CHANGE**

**WWW.CRTZ.XYZ WEBSITE URL**

FOLD LINE

**THIS AREA WILL CHANGE**  
**WITH EACH STYLE**

**CORTEIZ LOGO #2 DOES NOT CHANGE**

**THIS AREA WILL CHANGE**  
**WITH EACH STYLE**

9mm SEAM ALLOWANCE

**BARCODE STICKERS \*LAYOUT PROVIDED BY BRAND\***

**- LABEL GUIDELINES**

**\*FOR USE ON OUTSIDE OF POLY BAG**

**THIS AREA WILL CHANGE**  
**WITH EACH STYLE**

**SERIE A KNIT JERSEY [BLACK]**

**CRTZ0216-001-ME / MEDIUM**



**5106343304209**







**PLACEMENT EXAMPLE**



CORTEIZ

TRIM CHART

CODE	NAME	IMAGE	PLACEMENT	QTY
-----	FACTORY DEVELOPED CORTEIZ BRAND: CARE/CONTENT SATIN LOOP LABEL		INTERIOR - WEARER'S LEFT SIDE SEAM	1
-----	**LABEL LAYOUT PROVIDED BY BRAND FACTORY TO DEVELOP STICKERS**  BARCODE STICKER LABEL	SERIE A KNIT JERSEY (BLACK) CRTZ0216-001-ME / MEDIUM  5106343304209	ON EXTERIOR RIGHT LOWER CORNER OF GARMENT POLY BAG	1
-----	FACTORY DEVELOPED PTC CENTER FOLD WOVEN LABEL -		INTERIOR CENTER BACK NECK -OR- CENTER BACK INTERIORWAISTBAND	1
-----	FACTORY DEVELOPED  POLY BAG (100% RECYCLED) 370mmX470mm_CORTEIZ		FOLD GARMENT AND ENCLOSE IN POLY BAG	1