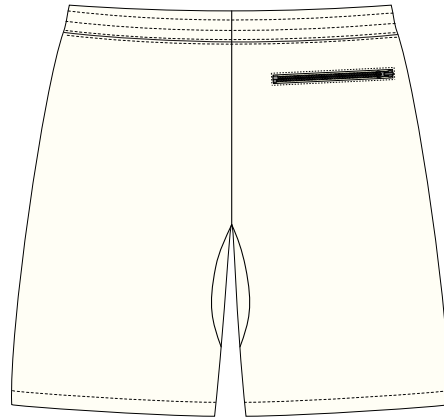




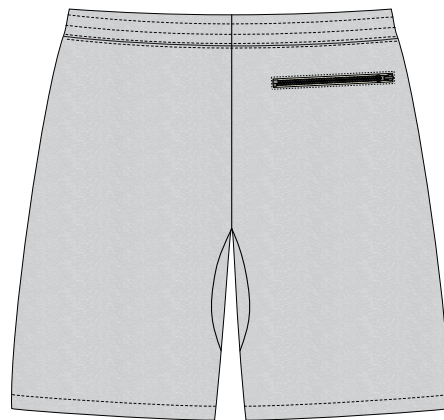
BLACK



CREAM



NAVY



HEATHER GREY
(BROS B12B)

STYLE NO.	CRTZ_14XX	VENDOR	UNAVAILABLE
STYLE NAME	SHIELD FLEECE SWEATSHORT	CATEGORY	BOTTOMS
DESIGNER	JM	SIZE RUN	S, M, L, XL, XXL

FIT/SPEC REFERENCE

FIT TYPE	SHORT SPEC	


FABRIC(S)

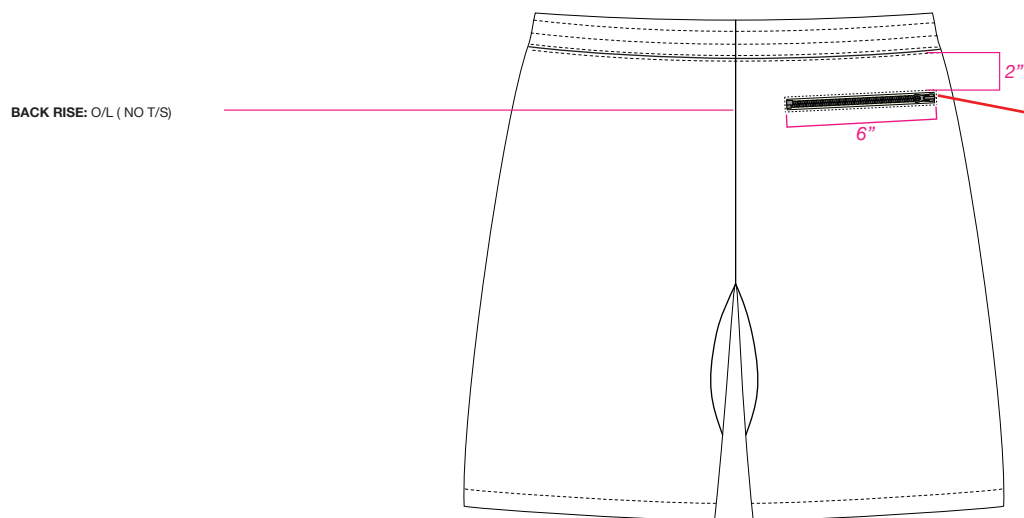
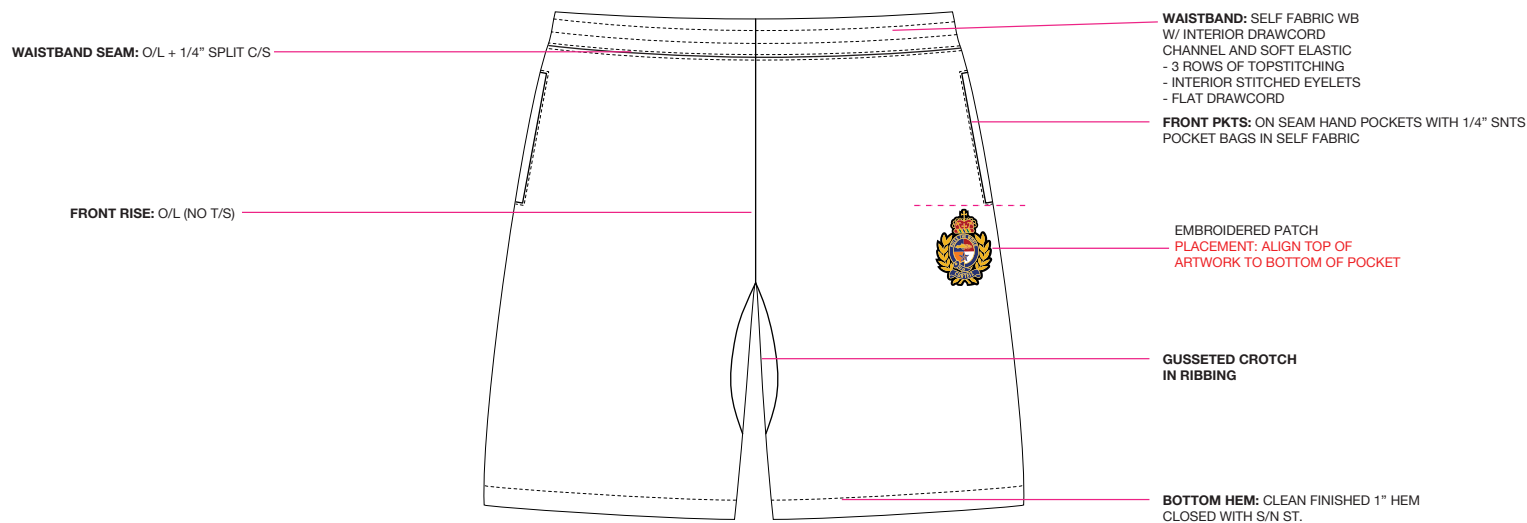
MAIN BODY SHELL	100% COTTON O.E. FLEECE (430/440gsm)	DRAWCORD	S2-240813-021_ 100% COTTON 7MM - PFD COLOR
RIBBING/GUSSET	AS APPROVED RIBBING		
EMBELLISHMENT	EMBROIDERED PATCH		

COLORWAY FABRIC AND TRIMS CHART

	COLORWAY 1	COLORWAY 2	COLORWAY 3
COLORWAY	BLACK	CREAM	NAVY
MAIN BODY	STOCK/AVAILABLE BLACK	11-4300 TCX	19-3921 TCX
THREAD	DTM	DTM	DTM
RIBBING	DTM	DTM	DTM
ZIPPER TAPE	YKK 112	YKK 122	YKK 122
DRAWCORD	NATURAL	NATURAL	NATURAL
STITCHED EYELETS	DTM	DTM	DTM
	COLORWAY 4		
COLORWAY	HEATHER GREY		
MAIN BODY	BROS B12B		
THREAD	DTM		
RIBBING	BROS B12B		
ZIPPER TAPE	YKK 122		
DRAWCORD	NATURAL		
STITCHED EYELETS	DTM		

ZIPPER NOMENCLATURE

BASE MATERIAL	CHAIN TYPE	GAUGE/SIZE	SLIDER BODY TYPE	SLIDER FUNCTION	SLIDER PULLTAB	TEETH /SLIDER FINISH	LOCATION
YKK / METAL	CHAIN	#5	(C) CLOSED-END 1-WAY	(A) AUTO	DA8LH 	C5 (SILVER)	REAR POCKET



REAR POCKET --
 LAPPED ZIPPER (SEE PHOTO REF. BELOW)
 ZIPPER TAPE DTM SELF



REFERENCE SAMPLE



MATCH ALL CONSTRUCTION DETAILS/FABRIC DETAILS/
POCKET DETAILS TO BOCA FLEECE OPEN HEM SWEATPANT

REMOVE PIPING

EMBROIDERED PATCH
 *SEE DRAWING FOR EXACT PLACEMENT
 ARTWORK IS AT 100% SCALE

3.56"
 HEIGHT



2.6271" WIDTH

COLOR 1	BLACK
COLOR 2	15-0955 TPG
COLOR 3	WHITE
COLOR 4	16-1257 TPG
COLOR 5	19-3864 TPG
COLOR 6	18-1657 TPG
COLOR 7	18-6030 TPG

PHOTO REFERENCE - MATCH QUALITY:





SHIELD FLEECE OPEN HEM PANT

TRIM CHART

CODE	NAME	IMAGE	PLACEMENT	QTY
-----	FACTORY DEVELOPED CORTEIZ BRAND: CARE/CONTENT SATIN LOOP LABEL		INTERIOR - WEARER'S LEFT SIDE SEAM	1
-----	FACTORY DEVELOPED POLY BAG STICKER LABEL		ON EXTERIOR RIGHT LOWER CORNER OF GARMENT POLY BAG	1
-----	FACTORY DEVELOPED CRTZ CENTER FOLD WOVEN LABEL - BLANK TEES 2023-2024		INTERIOR CENTER BACK NECK -OR- CENTER BACK INTERIORWAISTBAND	1
-----	FACTORY DEVELOPED POLY BAG (100% RECYCLED) 370mmX470mm_CORTEIZ		FOLD GARMENT AND ENCLOSE IN POLY BAG	1
-----	FACTORY DEVELOPED CRTZ SHIELD CREST PATCH		WEARER'S LEFT LEG *SEE DRAWIGN FOR PLACEMENT	1

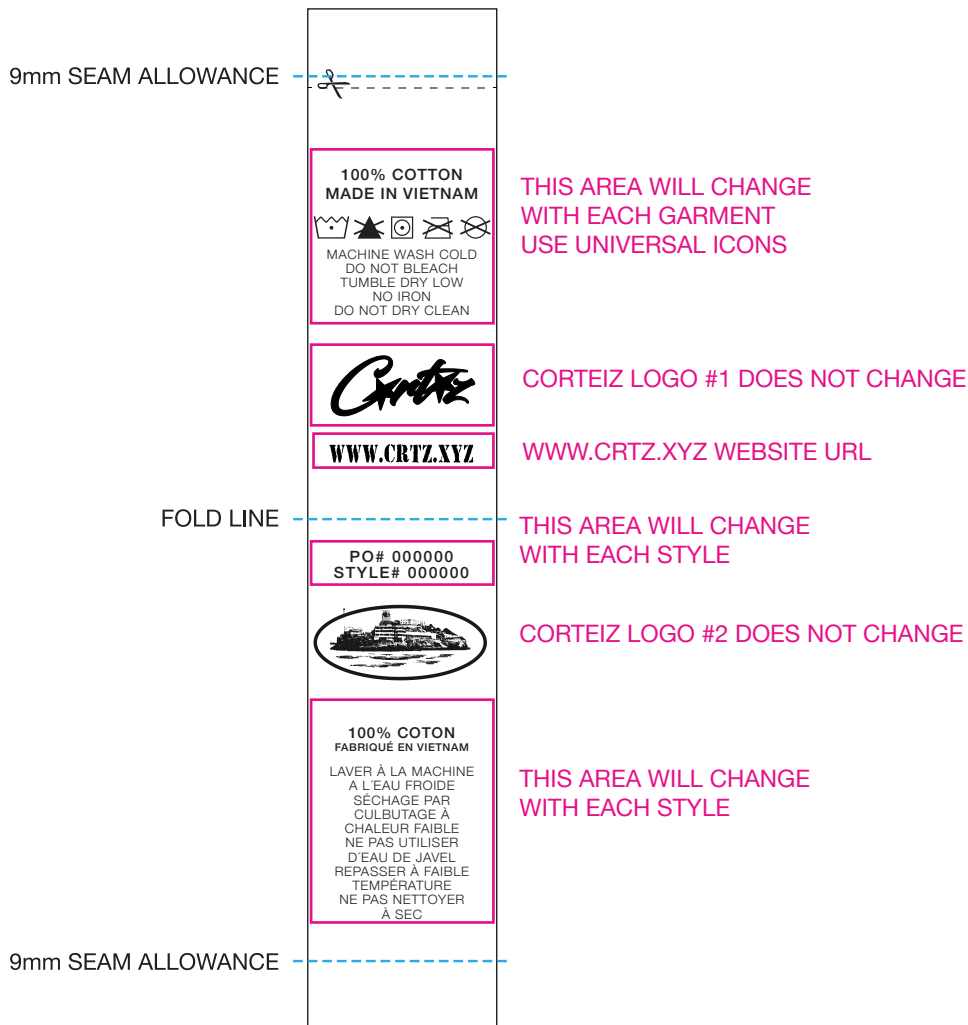


SHIELD FLEECE OPEN HEM PANT

CARE/CONTENT/COO LABEL/POLY BAG STICKER

SATIN LABEL
1 COLOR PRINT IN BLACK
135mm x 25mm

PLEASE NOTE HEIGHT OF LABEL MAY CHANGE
DEPENDING ON AMOUNT OF WASH INSTRUCTIONS
THIS IS ONLY A MOCK UP



STOCKER LABEL GUIDELINES

*FOR USE ON OUTSIDE OF POLY BAG

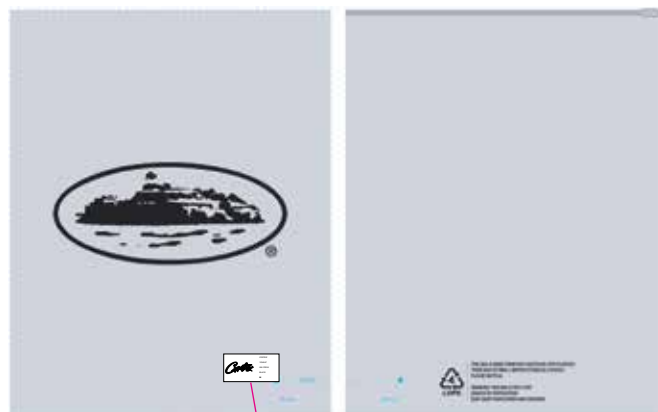
*LAYOUT IS OK TO CHANGE, BUT PLEASE TRY TO MATCH BELOW EXAMPLE
AS CLOSE AS POSSIBLE WITH ALL INFORMATION INCLUDED



THIS AREA WILL CHANGE
WITH EACH STYLE



EXAMPLE WITH SPECIFIC
STYLE INFORMATION



PLACEMENT EXAMPLE



SHIELD FLEECE OPEN HEM PANT

WOVEN LABEL ARTWORK

CENTER FOLD DAMASK WOVEN LABEL
SHOWN @ 100% ACTUAL SCALE



XS

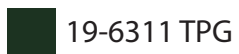
SMALL

MEDIUM

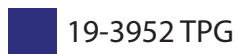
LARGE

XL

XXL



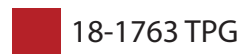
19-6311 TPG



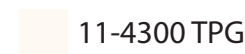
19-3952 TPG



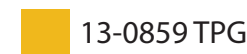
BLACK



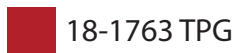
18-1763 TPG



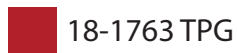
11-4300 TPG



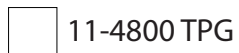
13-0859 TPG



18-1763 TPG



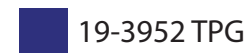
18-1763 TPG



11-4800 TPG



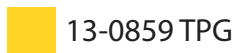
BLACK



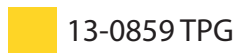
19-3952 TPG



BLACK



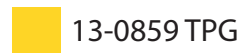
13-0859 TPG



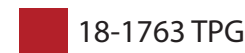
13-0859 TPG



BLACK



13-0859 TPG



18-1763 TPG