

Corteiz

HMP PANEL HEAVYWEIGHT LS TEE
COLORWAYS

**REVISED EMBROIDERY +
EXTERIOR HMP WOVEN LABEL
10/25/2024**



BLACK / YELLOW

STYLE NO.	CRTZ_1381	VENDOR	UNAVAILABLE
STYLE NAME	HMP PANEL HEAVYWEIGHT LS TEE	CATEGORY	JERSEY
DESIGNER	JM	SIZE RUN	S, M, L, XL, XXL

FABRIC(S)

MAIN BODY	100% COTTON (310gsm)	SPEC/FIT	CRTZ_1352 SUPERIOR ROYALE TEE LS
RIBBING	COTTON RIBBING	-	-
EMBELLISHMENTS	DIRECT EMBROIDERY + FLATLOCK/COVERSTITCH SEAMS	-	-

COLORWAY FABRIC AND TRIMS CHART

	COLORWAY 1	COLORWAY 2	COLORWAY 3
COLORWAY	BLACK / YELLOW		
MAIN BODY	STOCK BLACK COLOR (or 19-0303 TCX)		
RIBBING	DTM MAIN BODY		
INTERIOR NECK TAPING	DTM MAIN BODY		
CONSTRUCTION THREAD	DTM MAIN BODY		
FLATLOCK / COVERSTITCH	14-0957 TCX		
EMBROIDERY	14-0957 TCX		
	COLORWAY 4	COLORWAY 5	COLORWAY 6
COLORWAY			
MAIN BODY			
RIBBING			
INTERIOR NECK TAPING			
CONSTRUCTION THREAD			
FLATLOCK / COVERSTITCH			
EMBROIDERY			
	COLORWAY 7	COLORWAY 8	COLORWAY 9
COLORWAY			
MAIN BODY			
RIBBING			
INTERIOR NECK TAPING			
CONSTRUCTION THREAD			
FLATLOCK / COVERSTITCH			
EMBROIDERY			

CURVED RAGLAN "FREEDOM SLEEVE"
WITH FLATLOCK STITCHING, SEE REF IMAGE BELOW



HMP WOVEN LABEL SEWN UNDER NECK TAPING

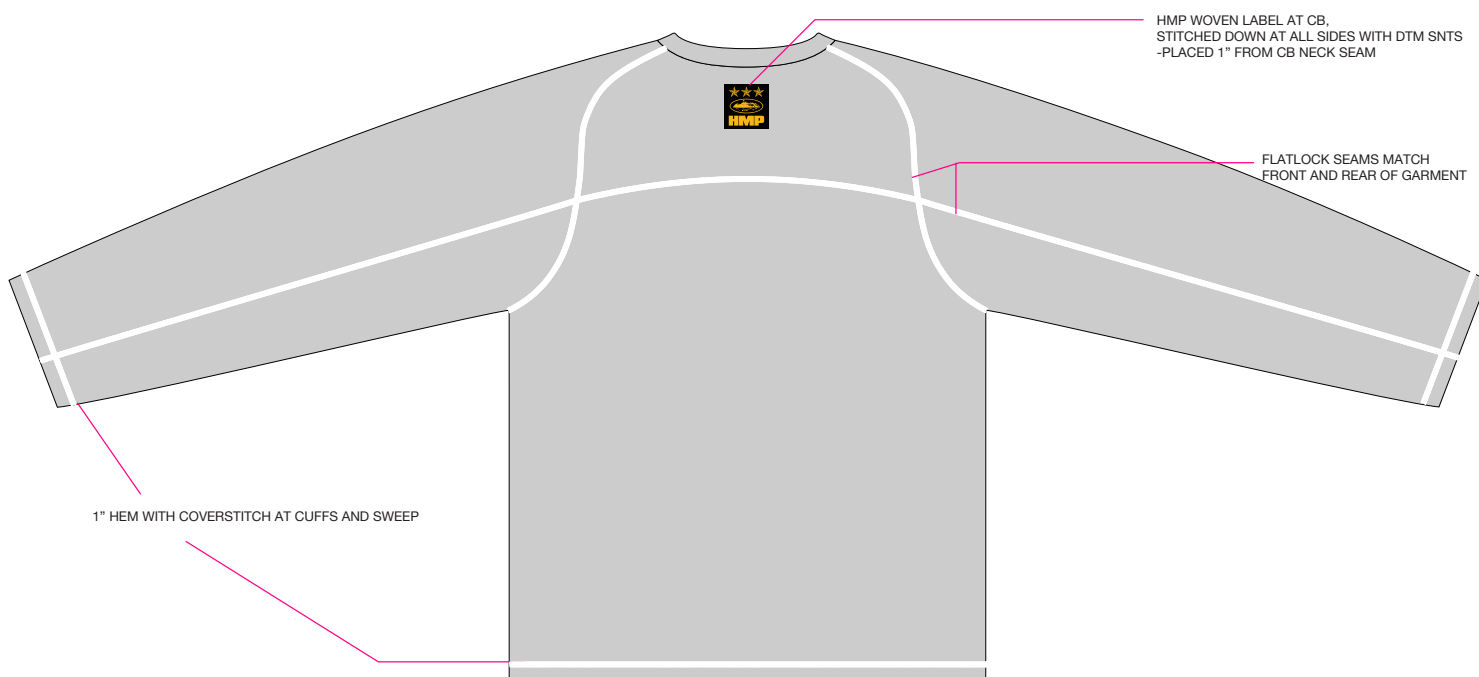
COTTON TAPING AT INTERIOR NECK SEAM

SET IN COLLAR FINISHED
1x1 RIBBING AT COLLAR
- COLLAR HEIGHT: 1"

NO SHOULDER SEAM CONSTRUCTION

PANEL SEAM ACROSS BODY INTO SLEEVES
WITH FLATLOCK STITCHING
*MATCH SHAPE TO CAD SKETCH AS CLOSE AS POSSIBLE

DIRECT EMBROIDERY AT CENTER FRONT CHEST
*SEE ART PAGE FOR DIMS/COLOR



HMP WOVEN LABEL AT CB,
STITCHED DOWN AT ALL SIDES WITH DTM SNTS
-PLACED 1" FROM CB NECK SEAM

FLATLOCK SEAMS MATCH
FRONT AND REAR OF GARMENT

1" HEM WITH COVERSTITCH AT CUFFS AND SWEEP

DIRECT EMBROIDERY @ FRONT CENTER CHEST
100% ACTUAL SIZE
*SEE DRAWING FOR EXACT PLACEMENT



6CM WIDE

ARTWORK IS 100% ACTUAL SIZE

COLORWAY

BLACK

EMBROIDERY THREAD

14-0957 TPG

REVISED 10/25/2024



CORTEIZ

TRIM CHART

CODE	NAME	IMAGE	PLACEMENT	QTY
-----	CORTEIZ BRAND: CARE/CONTENT SATIN LOOP LABEL **FACTORY TO DEVELOP**		INTERIOR - WEARER'S LEFT SIDE	1
-----	POLY BAG STICKER LABEL **FACTORY TO DEVELOP**		ON EXTERIOR RIGHT LOWER CORNER OF GARMENT POLY BAG	1
-----	CORTEIZ HMP HALF FOLD WOVEN LABEL **FACTORY TO DEVELOP**		INTERIOR CENTER BACK NECK SEAM	1
-----	NEW BLACK/YELLOW HMP WOVEN LABEL **FACTORY TO DEVELOP**		FOR WHITE AND HEATHER GREY ONLY: EXTERIOR CENTER BACK	1
-----	POLY BAG (100% RECYCLED) 370mmX470mm_CORTEIZ+HMP		FOLD GARMENT AND ENCLOSE IN POLY BAG	1



CORTEIZ

WOVEN "HMP" LABEL **FACTORY TO DEVELOP**

NEW WOVEN LABEL COLOR REVISED 10/25/2024

LABEL FOR WHITE AND HEATHER GREY COLORWAY:



2"

BASE

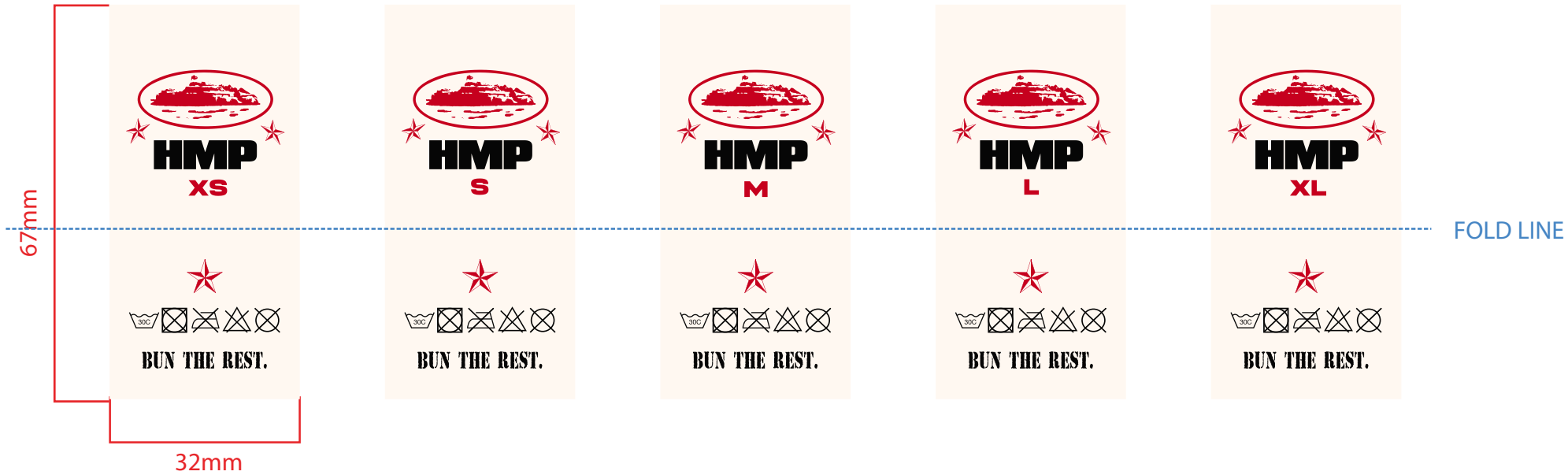
BLACK

TEXT / BRAND LOGO / STARS

14-0957 TPG



CRTZ CENTER FOLD WOVEN LABEL - HMP PRODUCT LINE 2024-BEYOND



- 11-4300 TPG
- BLACK
- 18-1763 TPG

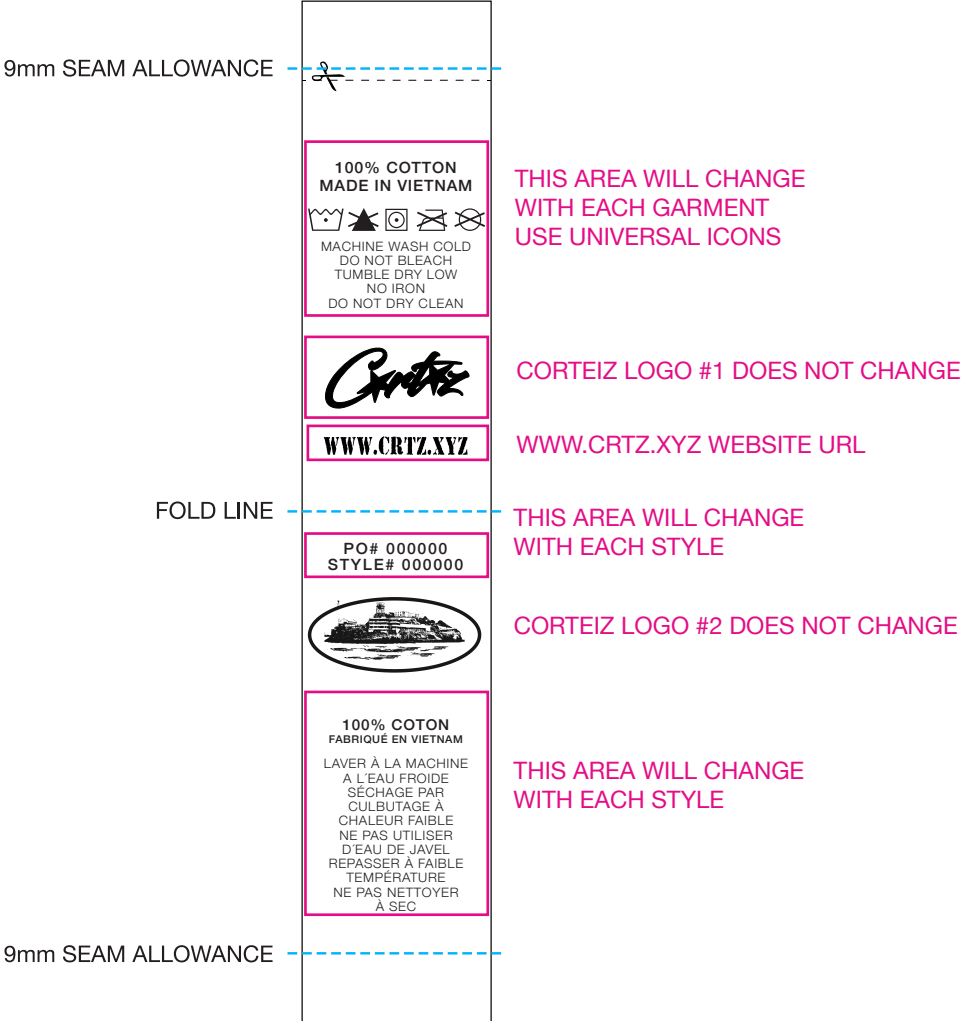


CORTEIZ

CARE/CONTENT/COO LABEL/POLY BAG STICKER

SATIN LABEL
1 COLOR PRINT IN BLACK
135mm x 25mm

PLEASE NOTE HEIGHT OF LABEL MAY CHANGE
DEPENDING ON AMOUNT OF WASH INSTRUCTIONS
THIS IS ONLY A MOCK UP



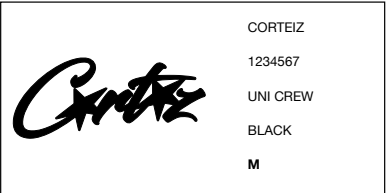
STOCKER LABEL GUIDELINES

***FOR USE ON OUTSIDE OF POLY BAG**

***LAYOUT IS OK TO CHANGE, BUT PLEASE TRY TO MATCH BELOW EXAMPLE**
AS CLOSE AS POSSIBLE WITH ALL INFORMATION INCLUDED



THIS AREA WILL CHANGE
WITH EACH STYLE



EXAMPLE WITH SPECIFIC
STYLE INFORMATION



PLACEMENT EXAMPLE