



OLIVE / BLACK



BLACK / YELLOW



HEATHER GREY / RED



HMP OPEN HEM SWEATPANT

FABRIC & TRIMS PAGE

INFO

STYLE NO.	CRTZ_1165	VENDOR	UNAVAILABLE
STYLE NAME	HMP OPEN HEM SWEATPANT	CATEGORY	FLEECE
DESIGNER	JM	SIZE RUN	S, M, L, XL, XXL

FIT/SPEC REFERENCE

FIT TYPE	CRTZ_1165 OPEN HEM PANT	


FABRIC(S)

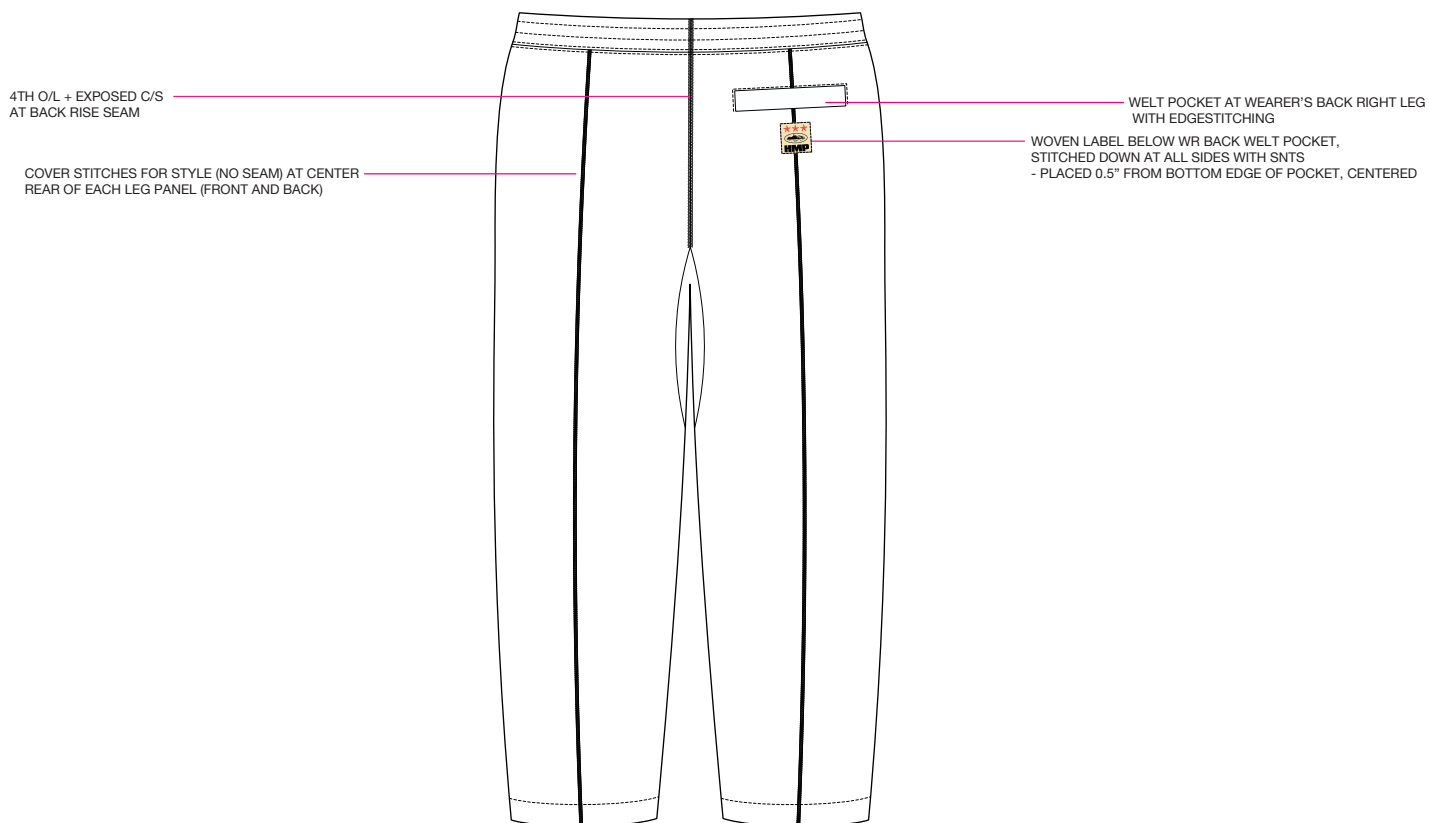
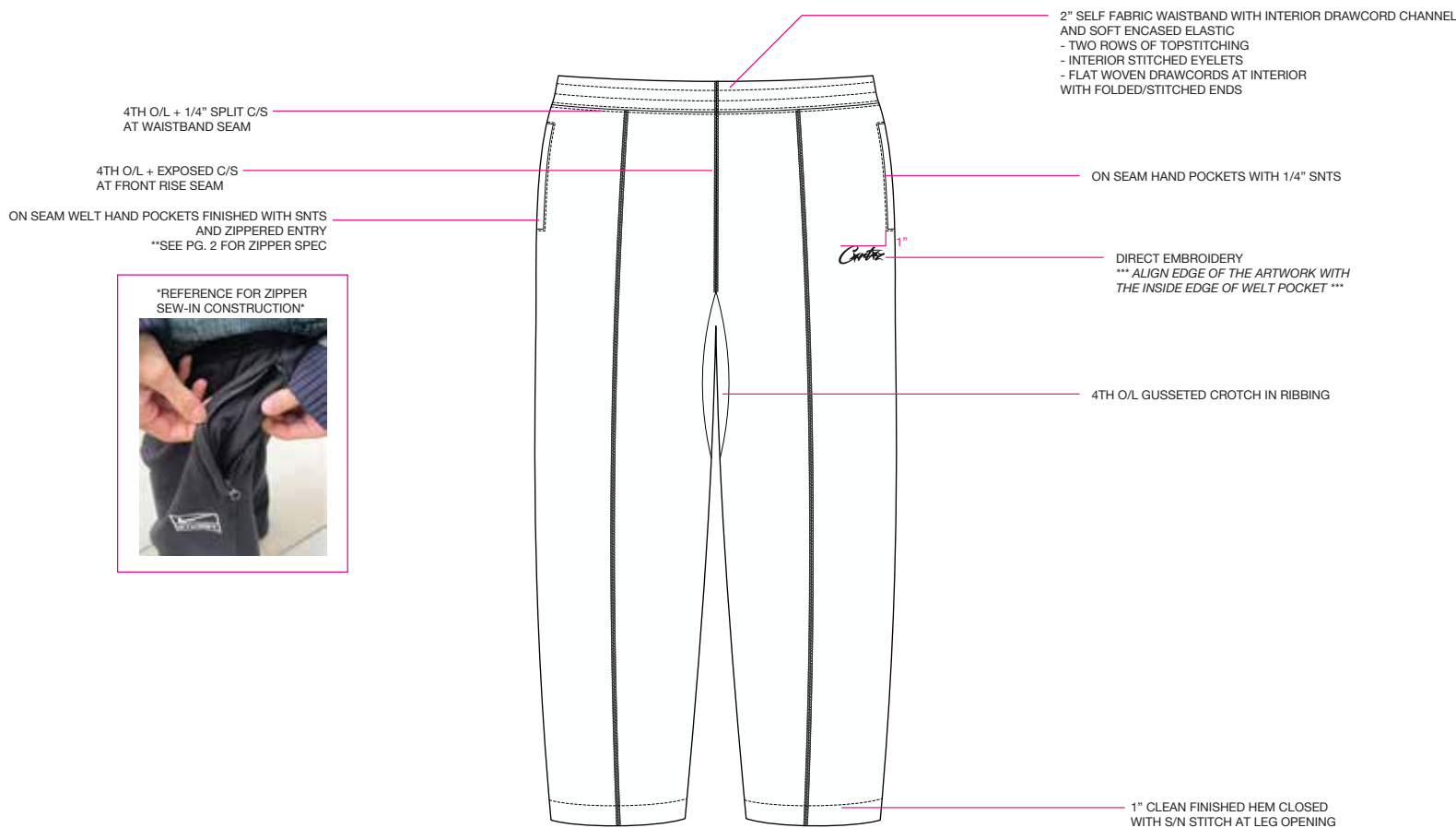
MAIN BODY	100% COTTON 440gsm (BRUSHED OE YARN - SOLID)	DRAWSTRING	FLAT WITH FOLDED + STITCHED ENDS
GUSSET RIBBING	UA BLANKS - 97% COTTON / 3% SPANDEX 2x2 445gsm		
		EMBELLISHMENTS	DIRECT EMBROIDERY, HMP WOVEN LABEL

COLORWAY FABRIC AND TRIMS CHART

	COLORWAY 1	COLORWAY 2	COLORWAY 3
COLORWAY	OLIVE	BLACK	HEATHER GREY
SHELL	A: 19-0622 TCX / B: 19-0516 TCX	BLACK	HEATHER GREY
RIBBING	DTM SHELL	DTM SHELL	DTM SHELL
CONSTRUCTION THREAD	DTM SHELL	DTM SHELL	DTM SHELL
COVER STITCHING	BLACK	14-0957 TPG	17-1563 TCX
DRAWCORD	DTM SHELL	DTM SHELL	DTM SHELL
ZIPPER TEETH/TAPE	DTM SHELL	DTM SHELL	DTM SHELL

ZIPPER SPEC

BRAND / TYPE	CHAIN TYPE	GAUGE/SIZE	SLIDER BODY TYPE	SLIDER FUNCTION	SLIDER PULLTAB	FINISH	LOCATION	QTY
YKK VISLON	MOLDED	#5	(C) CLOSED-END	(A) AUTO LOCK	DA8LH 	MATTE	POCKETS	2





HMP OPEN HEM SWEATPANT

ARTWORK

DIRECT EMBROIDERY @ WL PANT LEG
100% ACTUAL SIZE
*SEE DRAWING FOR EXACT PLACEMENT

PLEASE NOTE GREY BOX IS NOT PART OF ARTWORK



COLORWAY	COLORWAY	COLORWAY
OLIVE	BLACK	HEATHER GREY
THREAD	THREAD	THREAD
11-4300 TPG	11-4300 TPG	11-4300 TPG



CORTEIZ
TRIM CHART

CODE	NAME	IMAGE	PLACEMENT	
-----	CORTEIZ BRAND: CARE/CONTENT SATIN LOOP LABEL **FACTORY TO DEVELOP**		INTERIOR - WEARER'S LEFT SIDE SEAM	1
-----	POLY BAG STICKER LABEL **FACTORY TO DEVELOP**		ON EXTERIOR RIGHT LOWER CORNER OF GARMENT POLY BAG	1
-----	CORTEIZ HMP HALF FOLD WOVEN LABEL **FACTORY TO DEVELOP**		INTERIOR CENTER BACK WAISTBAND	1
-----	CREAM HMP WOVEN LABEL **FACTORY TO DEVELOP**		EXTERIOR UNDER REAR POCKET *SEE DRAWING FOR PLACEMENT	1
-----	POLY BAG (100% RECYCLED) 370mmX470mm_CORTEIZ+HMP		FOLD GARMENT AND ENCLOSE IN POLY BAG	1

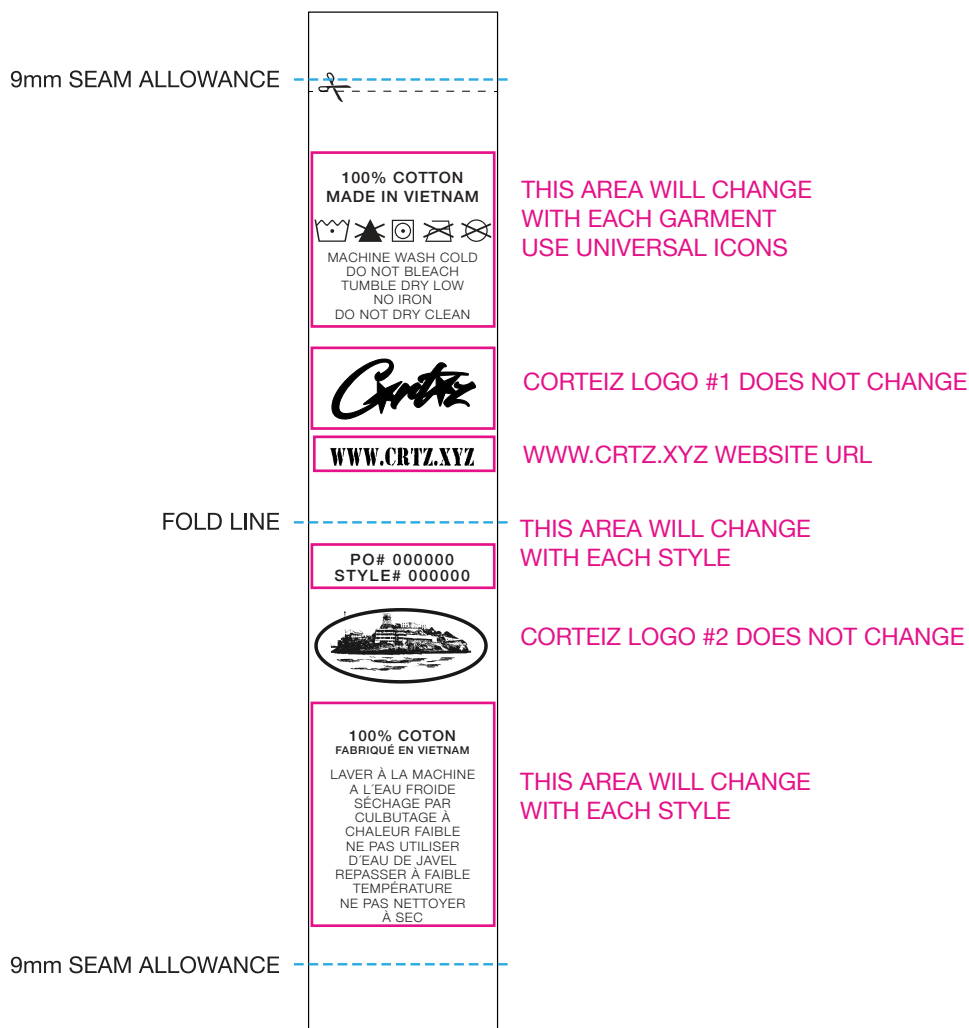


CORTEIZ

CARE/CONTENT/COO LABEL

SATIN LABEL
1 COLOR PRINT IN BLACK
135mm x 25mm

PLEASE NOTE HEIGHT OF LABEL MAY CHANGE
DEPENDING ON AMOUNT OF WASH INSTRUCTIONS
THIS IS ONLY A MOCK UP



STOCKER LABEL GUIDELINES

***FOR USE ON OUTSIDE OF POLY BAG**

***LAYOUT IS OK TO CHANGE, BUT PLEASE TRY TO MATCH BELOW EXAMPLE**
AS CLOSE AS POSSIBLE WITH ALL INFORMATION INCLUDED



THIS AREA WILL CHANGE
WITH EACH STYLE



EXAMPLE WITH SPECIFIC
STYLE INFORMATION



PLACEMENT EXAMPLE



CORTEIZ

WOVEN "HMP" LABEL **FACTORY TO DEVELOP**

LABEL FOR WHITE AND HEATHER GREY COLORWAY:



2"

THREAD COLORS

BASE

CREAM (12-0605 TCX)

STARS

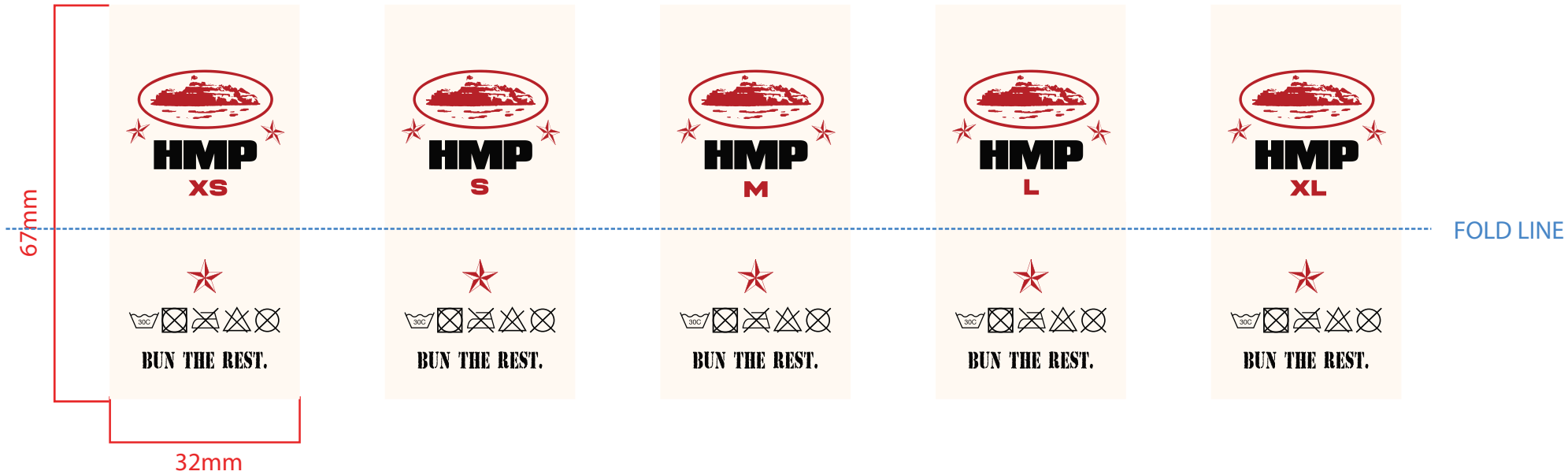
RED (17-1563 TCX)

TEXT / BRAND LOGO

BLACK



CRTZ CENTER FOLD WOVEN LABEL - HMP PRODUCT LINE 2024-BEYOND



- 11-4300 TPG
- BLACK
- 18-1763 TPG