

BROWN



ROYAL BLUE



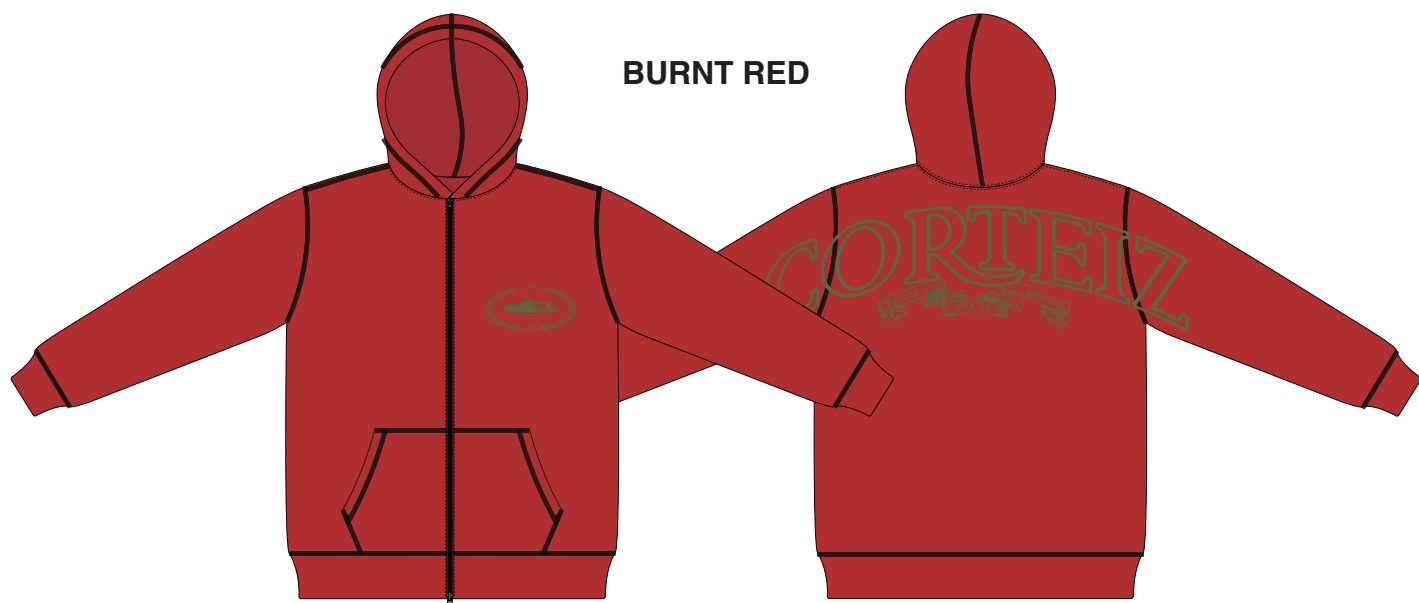
PINK



FORREST GREEN



BURNT RED



OLIVE







SUPERIOR ROYALE ZIP HOODIE

FABRIC & TRIMS PAGE

STYLE NO.	CRTZ_1160	VENDOR	UNAVAILABLE
STYLE NAME	SUPERIOR ROYALE BOXY ZIP HOODIE	CATEGORY	FLEECE
DESIGNER	JM	SIZE RUN	S, M, L, XL, XXL

FIT/SPEC REFERENCE

FIT TYPE	*NEW 2024 FIT* BOXY / DROP SHOULDER FIT	

FABRIC(S)

YARN / SHELL	100% COTTON O.E. FLEECE (430/440gsm)		-
RIBBING	AS APPROVED RIBBING		
EMBELLISHMENT	SCREENPRINTS	EMBELLISHMENT	SCREENPRINT


COLORWAY FABRIC AND TRIMS CHART

	COLORWAY 1	COLORWAY 2	COLORWAY 3
COLORWAY	HEATHER GREY	PINE	BLACK
MAIN BODY	HEATHER GREY (CRTZ_1012)	PINE (19-5920 TPX)	BLACK (STOCK / AVAILABLE BLACK)
THREAD	DTM	DTM	DTM
RIBBING	DTM	DTM	DTM
SCREENPRINT	WHITE	WHITE	WHITE
	COLORWAY 4	COLORWAY 5	
COLORWAY	CREAM	BABY BLUE	
MAIN BODY	(11-0107 TCX)*AS CRTZ_1116	(14-4214 TCX) (15-4105 TCX)	
THREAD	DTM	DTM	
RIBBING	DTM	DTM	
SCREENPRINT	BLACK	WHITE	

NEW COLORWAY FABRIC AND TRIMS CHART

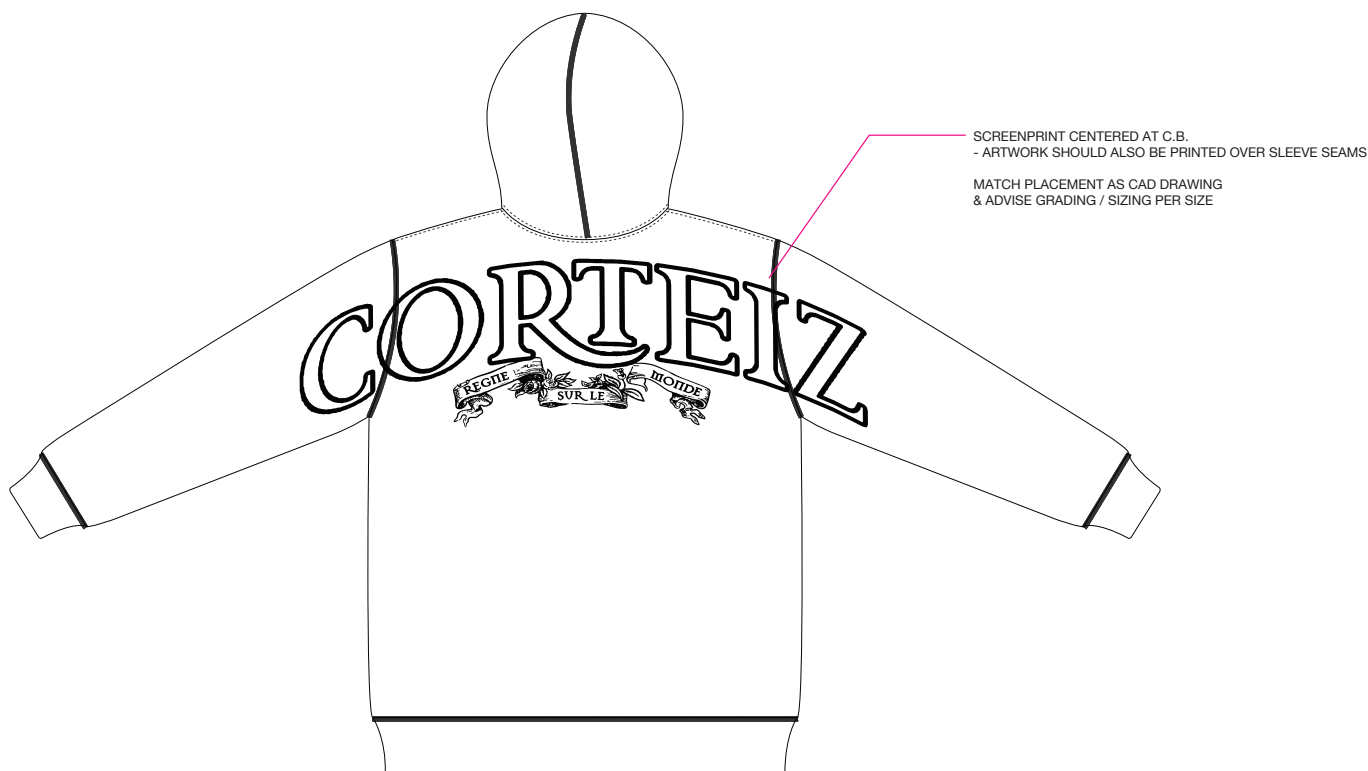
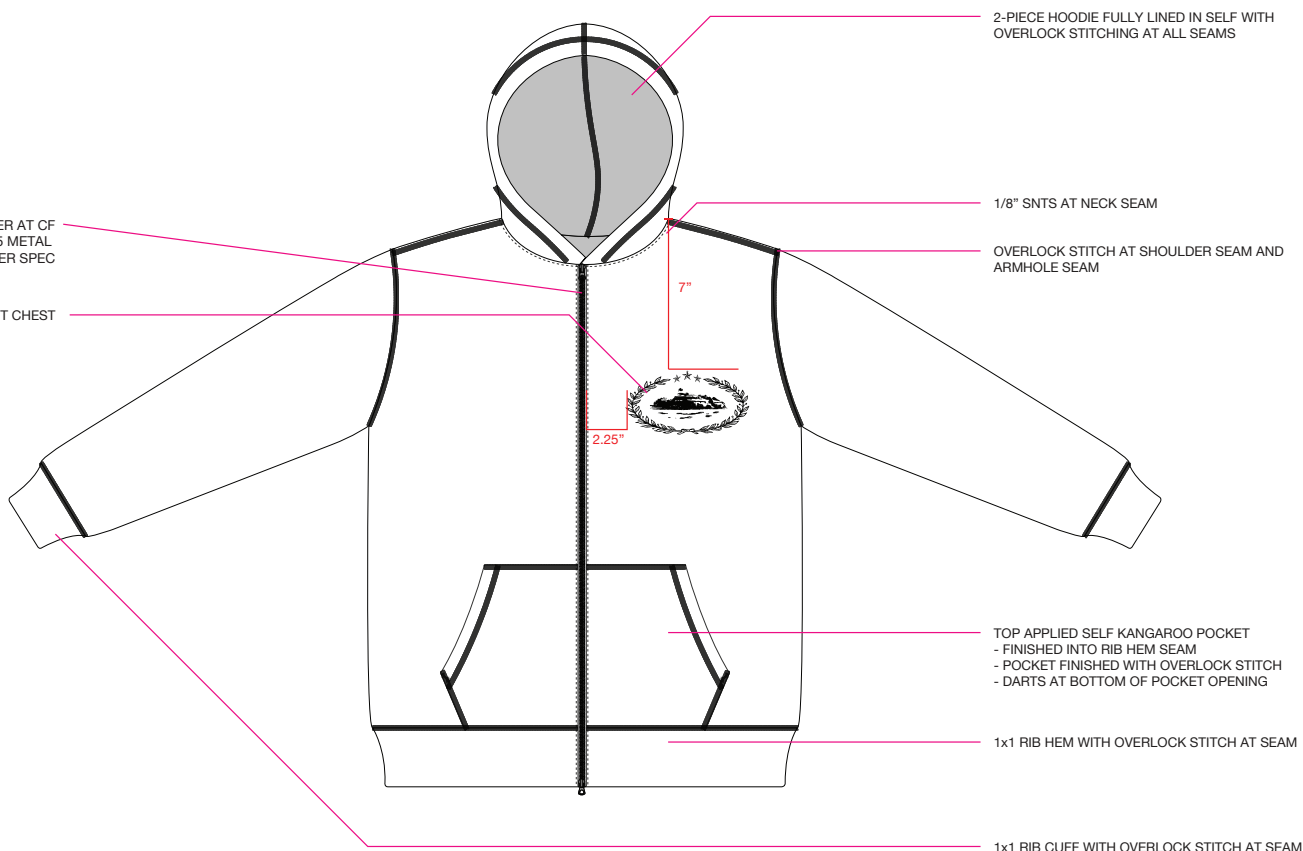
	COLORWAY 1	COLORWAY 2	COLORWAY 3
COLORWAY	BROWN	ROYAL BLUE	PINK
MAIN BODY	BROWN 19-0912 TPX	ROYAL BLUE (19-3952 TPX)	PINK (14-2710 TCX)
THREAD	DTM	DTM	DTM
RIBBING	DTM	DTM	DTM
SCREENPRINT	OFF WHITE 11-4300 TPX	OPTIC WHITE	OPTIC WHITE
	COLORWAY 4	COLORWAY 5	COLORWAY 5
COLORWAY	FORREST GREEN	BURN RED	OLIVE
MAIN BODY	FORREST GREEN (AS APPROVED LAB DIP: CRTZ_1146 / 1130)	BURNT RED (18-1658 TCX)	OLIVE (18-0316 TCX)
THREAD	DTM	DTM	DTM
RIBBING	DTM	DTM	DTM
SCREENPRINT	MUSTARD (15-0955 TPX)	OLIVE (18-0316 TCX)	OFF WHITE (11-4300 TCX)

ZIPPER NOMENCLATURE

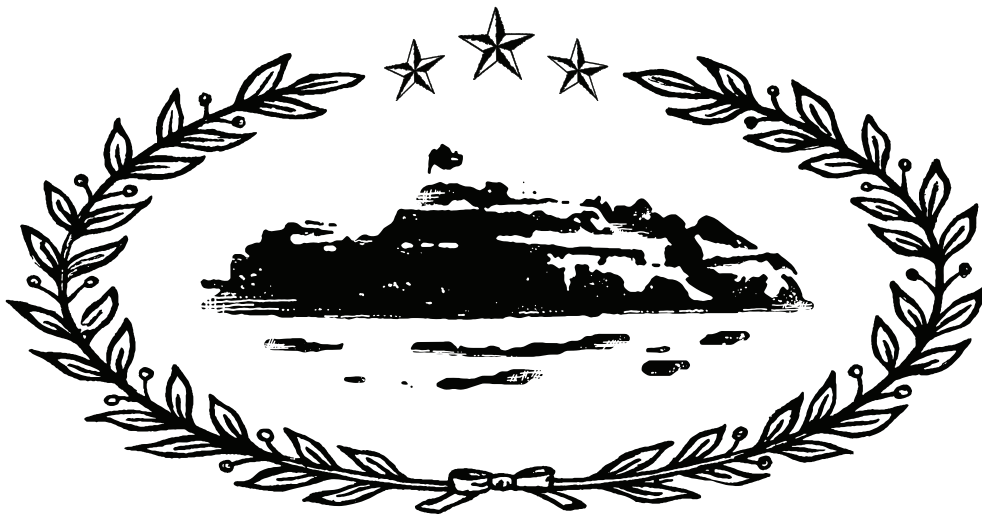
BASE MATERIAL	CHAIN TYPE	GAUGE/SIZE	SLIDER BODY TYPE	SLIDER FUNCTION	SLIDER PULLTAB	TEETH /SLIDER FINISH	LOCATION
YKK / METAL	CHAIN	#5	(M) 2 WAY SEPERATOR	(A) AUTO	DA8LH 	C5 (SILVER)	CF

Two-way separator (M)



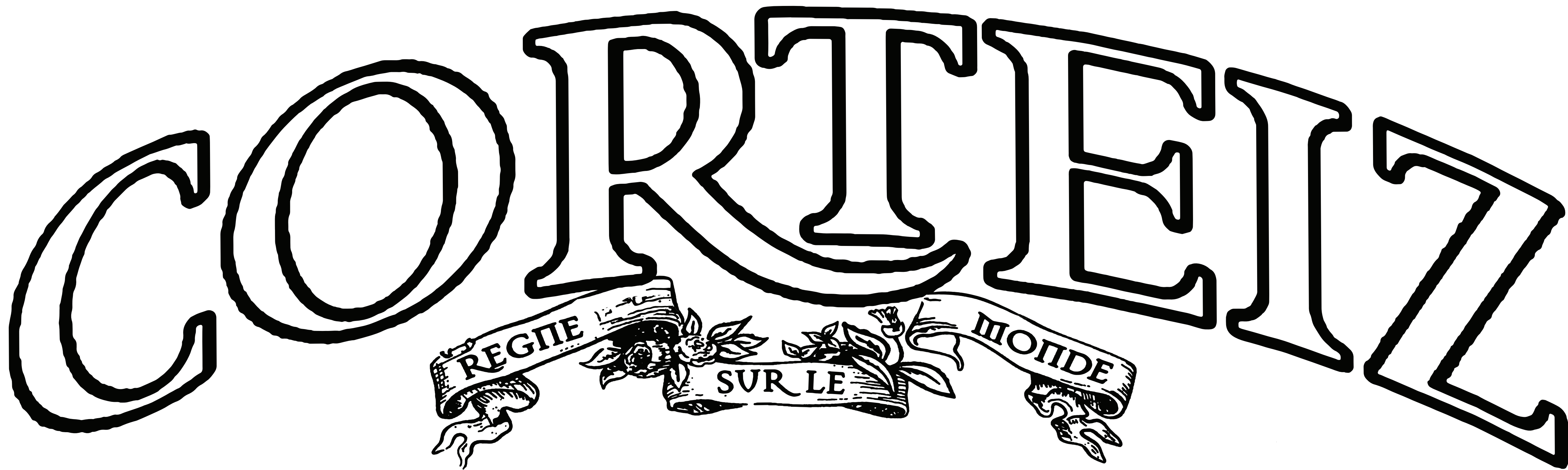


SCREEPRINT  
\*SEE DRAWING FOR EXACT PLACEMENT  
ARTWORK IS AT 100% SCALE



---

13cm (5.12") width



---

66.04cm (26") width





CORTEIZ

TRIM CHART

CODE	NAME	IMAGE	PLACEMENT	QTY
-----	<b>FACTORY DEVELOPED</b> CORTEIZ BRAND: CARE/CONTENT SATIN LOOP LABEL		INTERIOR - WEARER'S LEFT SIDE SEAM	1
-----	<b>FACTORY DEVELOPED</b> POLY BAG STICKER LABEL		ON EXTERIOR RIGHT LOWER CORNER OF GARMENT POLY BAG	1
-----	<b>FACTORY DEVELOPED</b> CRTZ CENTER FOLD WOVEN LABEL - BLANK TEES 2023-2024		INTERIOR CENTER BACK NECK -OR- CENTER BACK INTERIORWAISTBAND	1
-----	<b>FACTORY DEVELOPED</b> POLY BAG (100% RECYCLED) 370mmX470mm_CORTEIZ		FOLD GARMENT AND ENCLOSE IN POLY BAG	1



**CORTEIZ**

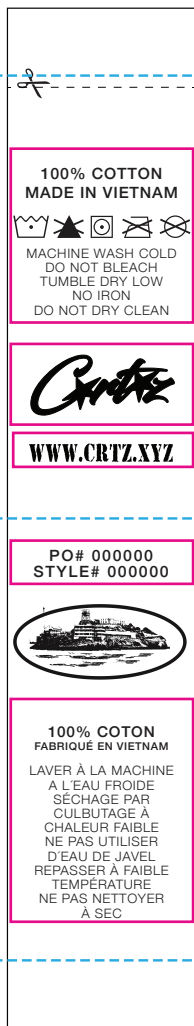
CARE/CONTENT/COO LABEL/POLY BAG STICKER

SATIN LABEL  
1 COLOR PRINT IN BLACK  
135mm x 25mm

PLEASE NOTE HEIGHT OF LABEL MAY CHANGE  
DEPENDING ON AMOUNT OF WASH INSTRUCTIONS  
THIS IS ONLY A MOCK UP

REVISED: 2024  
WEBSITE ADDED

9mm SEAM ALLOWANCE



THIS AREA WILL CHANGE  
WITH EACH GARMENT  
USE UNIVERSAL ICONS

CORTEIZ LOGO #1 DOES NOT CHANGE

WWW.CRTZ.XYZ WEBSITE URL

FOLD LINE

THIS AREA WILL CHANGE  
WITH EACH STYLE

CORTEIZ LOGO #2 DOES NOT CHANGE

THIS AREA WILL CHANGE  
WITH EACH STYLE

9mm SEAM ALLOWANCE

### STOCKER LABEL GUIDELINES

\*FOR USE ON OUTSIDE OF POLY BAG

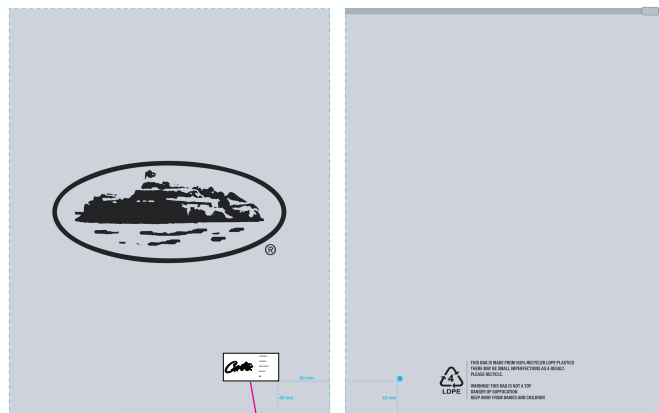
\*LAYOUT IS OK TO CHANGE, BUT PLEASE TRY TO MATCH BELOW EXAMPLE  
AS CLOSE AS POSSIBLE WITH ALL INFORMATION INCLUDED



THIS AREA WILL CHANGE  
WITH EACH STYLE



EXAMPLE WITH SPECIFIC  
STYLE INFORMATION



PLACEMENT EXAMPLE



CENTER FOLD DAMASK WOVEN LABEL  
SHOWN @ 100% ACTUAL SCALE



XS

SMALL

MEDIUM

LARGE

XL

XXL

19-6311 TPG

19-3952 TPG

BLACK

18-1763 TPG

11-4300 TPG

13-0859 TPG

18-1763 TPG

18-1763 TPG

11-4800 TPG

BLACK

19-3952 TPG

BLACK

13-0859 TPG

13-0859 TPG

13-0859 TPG

18-1763 TPG

BLACK