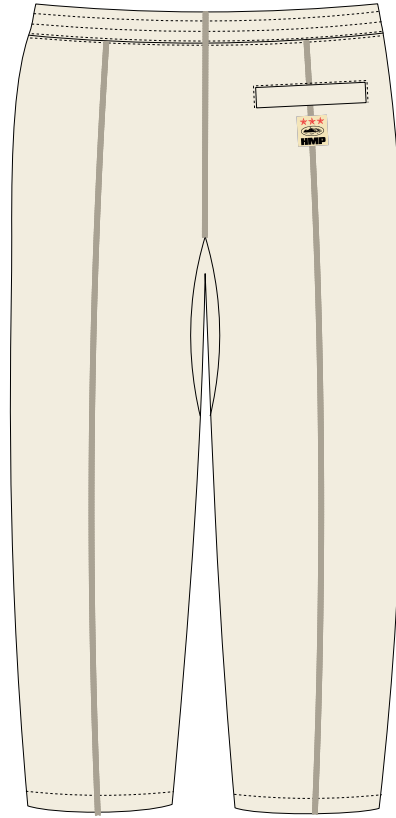
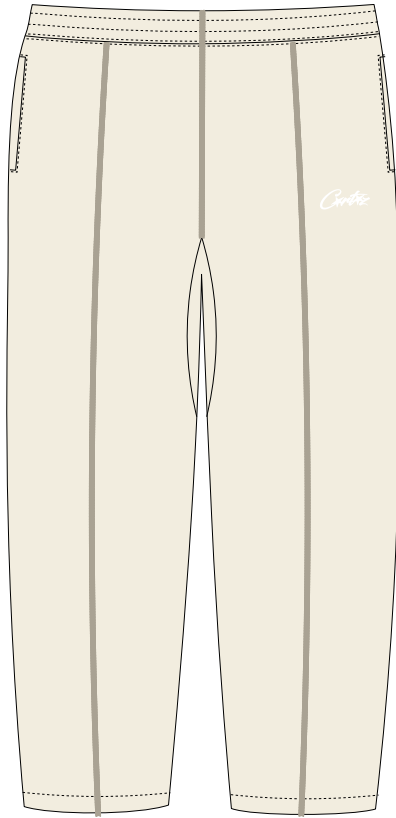
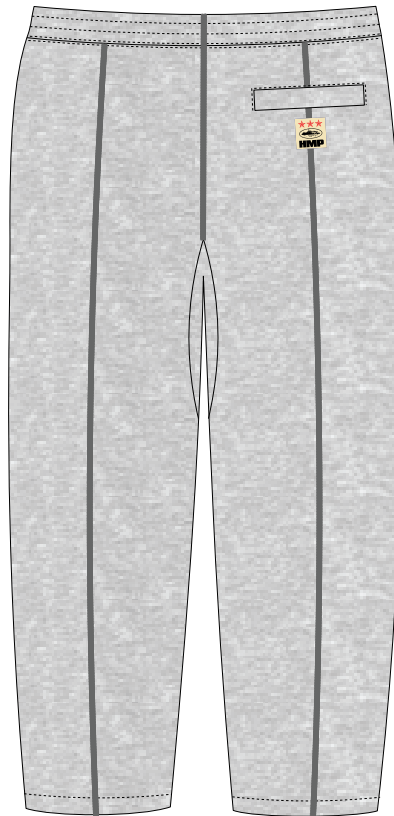
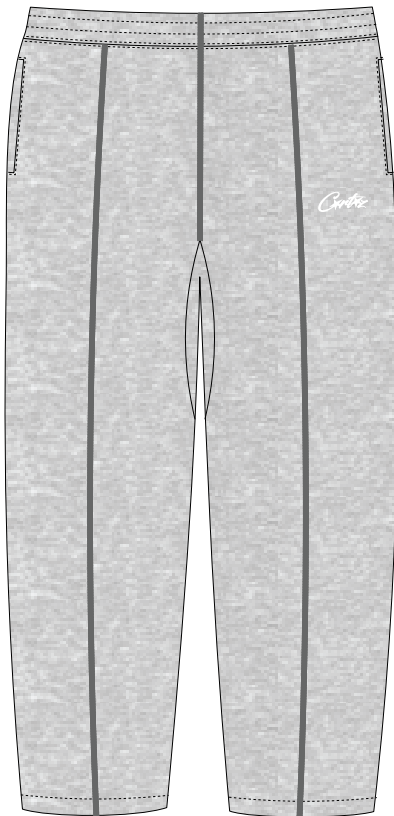


CREAM



HEATHER GREY



INFO

| | | | |
|------------|-------------------|----------|------------------|
| STYLE NO. | CRTZ_1165 | VENDOR | UNAVAILABLE |
| STYLE NAME | HMP OPEN HEM PANT | CATEGORY | FLEECE |
| DESIGNER | JM | SIZE RUN | S, M, L, XL, XXL |

FIT/SPEC REFERENCE

| | | |
|----------|------------------------|--|
| FIT TYPE | OPEN HEM SWEATPANT FIT | |
| | | |
| | | |


FABRIC(S)

| | | | |
|----------------|------------------------------------------------|----------------|------------------------------------|
| MAIN BODY | 100% COTTON 440gsm (BRUSHED OE YARN - SOLID) | DRAWSTRING | FLAT WITH FOLDED + STITCHED ENDS |
| GUSSET RIBBING | UA BLANKS - 97% COTTON / 3% SPANDEX 2x2 445gsm | | |
| | | EMBELLISHMENTS | DIRECT EMBROIDERY, HMP WOVEN LABEL |

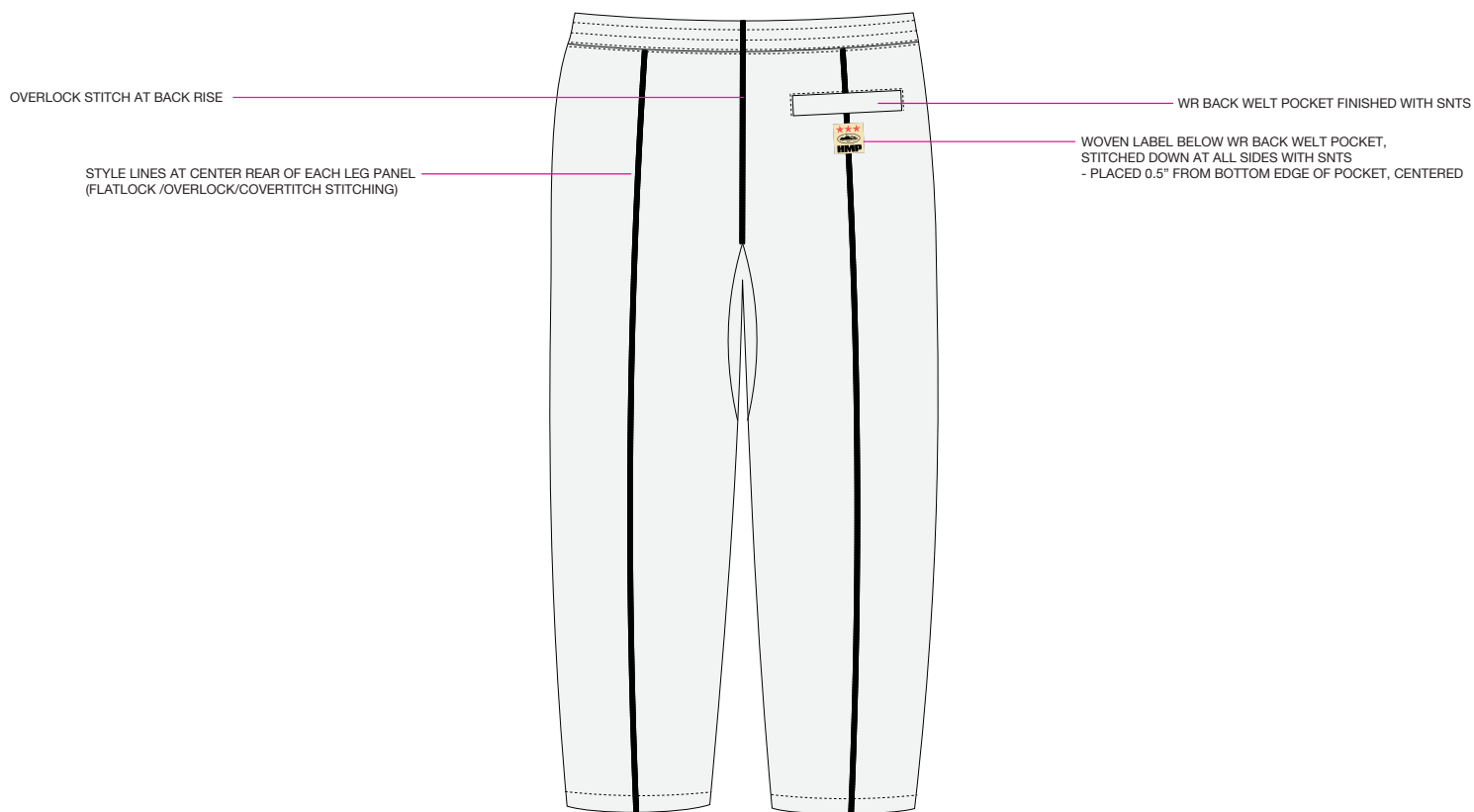
COLORWAY FABRIC AND TRIMS CHART

| | COLORWAY 1 | COLORWAY 2 | COLORWAY 3 |
|---------------------|-----------------------------------------|-----------------------------|------------|
| COLORWAY | CREAM | HEATHER GREY | |
| MAIN BODY | (11-0107 TCX) *AS APPROVED CRTZ_1116 | HEATHER GREY (*as APPROVED) | |
| POCKET LINING | (11-0107 TCX) *AS APPROVED CRTZ_1116 | HEATHER GREY (*as APPROVED) | |
| GUSSET RIBBING | (11-0107 TCX) *AS APPROVED CRTZ_1116 | HEATHER GREY (*as APPROVED) | |
| DRAWCORD | WHITE | WHITE | |
| STITCHED EYELETS | DTM | DTM | |
| FLATLOCK STITCHING | TONALLY DARKER (BY 20%) | TONALLY DARKER (BY 20%) | |
| THREAD | DTM | DTM | |
| ZIPPER TEETH/SLIDER | DTM | DTM | |
| ZIPPER TAPE | DTM | DTM | |
| | | | |
| | | | |
| | | | |
| | | | |
| | | | |

ZIPPER SPEC

| BRAND / TYPE | CHAIN TYPE | GAUGE/SIZE | SLIDER BODY TYPE | SLIDER FUNCTION | SLIDER PULLTAB | FINISH | LOCATION | QTY |
|--------------|------------|------------|------------------|-----------------|---------------------------------------------------------------------------------------------|--------|----------|-----|
| YKK VISLON | MOLDED | #5 | (C) CLOSED-END | (A) AUTO LOCK | DA8LH  | MATTE | POCKETS | 2 |
| | | | | | | | | |

HMP OPEN HEM PANT EXTERIOR CONSTRUCTION DETAILS



DIRECT EMBROIDERY @ WL CHEST
100% ACTUAL SIZE
*SEE DRAWING FOR EXACT PLACEMENT

PLEASE NOTE GREY BOX IS NOT PART OF ARTWORK



COLORWAY 1

HEATHER GREY (CRTZ_1012)

THREAD

WHITE

COLORWAY 2

CREAM

THREAD

WHITE



CORTEIZ

TRIM CHART

| CODE | NAME | IMAGE | PLACEMENT | |
|-------|-------------------------------------------------------------------------------------|-------|----------------------------------------------------------|---|
| ----- | CORTEIZ BRAND: CARE/CONTENT SATIN LOOP LABEL **FACTORY TO DEVELOP** | | INTERIOR - WEARER'S LEFT SIDE SEAM | 1 |
| ----- | POLY BAG STICKER LABEL **FACTORY TO DEVELOP** | | ON EXTERIOR RIGHT LOWER CORNER OF GARMENT POLY BAG | 1 |
| ----- | CORTEIZ HMP HALF FOLD WOVEN LABEL **FACTORY TO DEVELOP** | | INTERIOR CENTER BACK WAISTBAND | 1 |
| ----- | CREAM HMP WOVEN LABEL **FACTORY TO DEVELOP** | | EXTERIOR UNDER REAR POCKET *SEE DRAWING FOR PLACEMENT | 1 |
| ----- | POLY BAG (100% RECYCLED) 370mmX470mm_CORTEIZ | | FOLD GARMENT AND ENCLOSE IN POLY BAG | 1 |
| | | | | |
| | | | | |
| | | | | |
| | | | | |



CORTEIZ

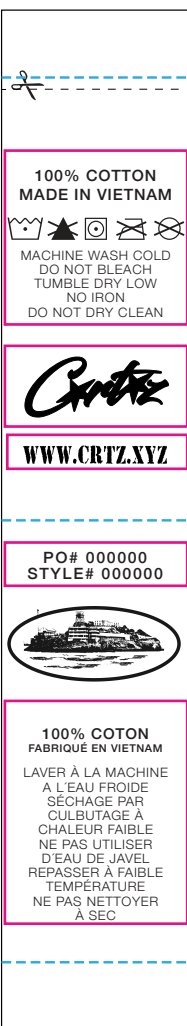
CARE/CONTENT/COO LABEL

SATIN LABEL
1 COLOR PRINT IN BLACK
135mm x 25mm

PLEASE NOTE HEIGHT OF LABEL MAY CHANGE
DEPENDING ON AMOUNT OF WASH INSTRUCTIONS
THIS IS ONLY A MOCK UP

REVISED: 2024
WEBSITE ADDED

9mm SEAM ALLOWANCE



THIS AREA WILL CHANGE
WITH EACH GARMENT
USE UNIVERSAL ICONS

CORTEIZ LOGO #1 DOES NOT CHANGE

WWW.CRTZ.XYZ WEBSITE URL

FOLD LINE

THIS AREA WILL CHANGE
WITH EACH STYLE

CORTEIZ LOGO #2 DOES NOT CHANGE

THIS AREA WILL CHANGE
WITH EACH STYLE

9mm SEAM ALLOWANCE

STOCKER LABEL GUIDELINES

***FOR USE ON OUTSIDE OF POLY BAG**

***LAYOUT IS OK TO CHANGE, BUT PLEASE TRY TO MATCH BELOW EXAMPLE**
AS CLOSE AS POSSIBLE WITH ALL INFORMATION INCLUDED



THIS AREA WILL CHANGE
WITH EACH STYLE



EXAMPLE WITH SPECIFIC
STYLE INFORMATION



PLACEMENT EXAMPLE



****FACTORY TO DEVELOP****

