

ENCHANTÉ

STYLE #	EN1024MC07	STYLE NAME	DOUBLE POCKET 1/4 ZIP	CATEGORY	TOP
SEASON	FALL/AUSTIN 2024	XF	7/31/24	FABRIC DESCRIPTION	420GSM COTTON FLEECE
FACTORY	UA	STAGE	PROTO	FABRIC CONTENT	100% COTTON
SIZE RANGE	XS-XXL	SAMPLE SIZE	LARGE	TP BY:	ET



SELF: 100% COTTON FLEECE 420GSM ART#VTK5971B
COMBO RIB: 97/3 COTTON SPANDEX 445GSM ART#VTK6002-1

COLOR:
- GREEN (ROLLING HILLS): PANTONE 18-6028 TCX
WITH ACID WASH AS SUMMER 1


BUYER:	LOYALIST
SEASON:	FALL 24
TYPE:	ACID WASH AS SUMMER 1
FABRIC DETAIL:	420GSM COTTON FLEECE
STYLE:	TBC
COLOR:	18-6028 TCX ROLLING HILLS
ATTN:	HANNAH
DATE SENT:	29-Apr-24



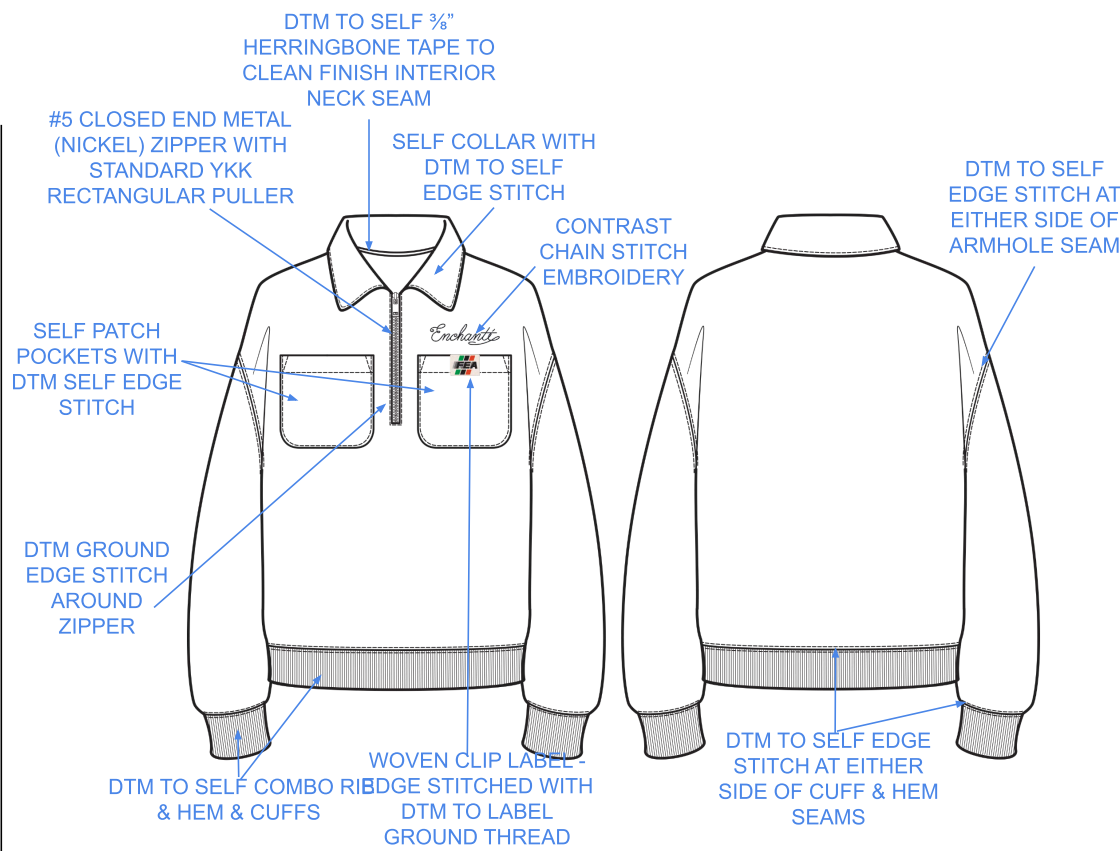
COVER REMARKS:

5/13/24 TP SENT - FACTORY TO DEVELOP PATTERN & LAUNCH PROTO SAMPLE

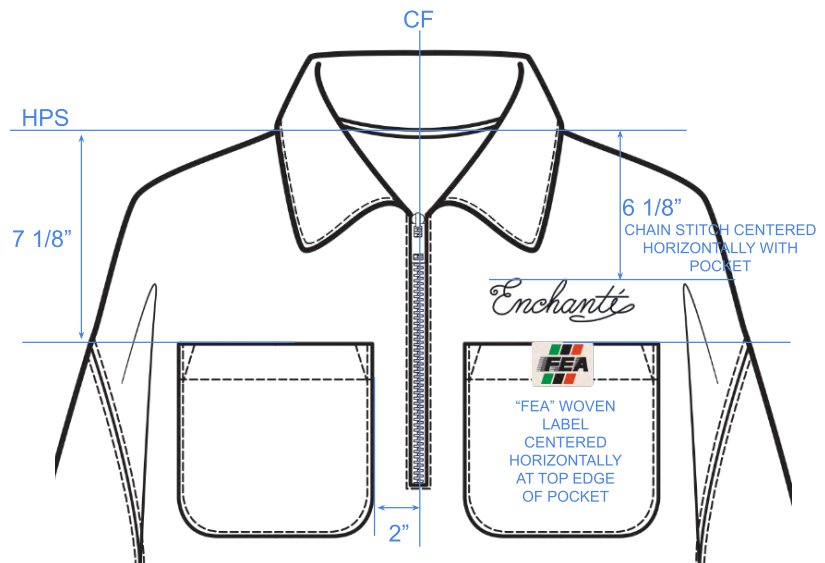
ENCHANTÉ

STYLE #	EN1024MC07	STYLE NAME	DOUBLE POCKET 1/4 ZIP	CATEGORY	TOP	<div>SKETCH</div> 
SEASON	FALL/AUSTIN 2024	XF	7/31/24	FABRIC DESCRIPTION	420GSM COTTON FLEECE	
FACTORY	UA	STAGE	PROTO	FABRIC CONTENT	100% COTTON	
SIZE RANGE	XS-XXL	SAMPLE SIZE	LARGE	TP BY:	ET	


CONSTRUCTION



FRONT EMBROIDERY & WOVEN LABEL PLACEMENT

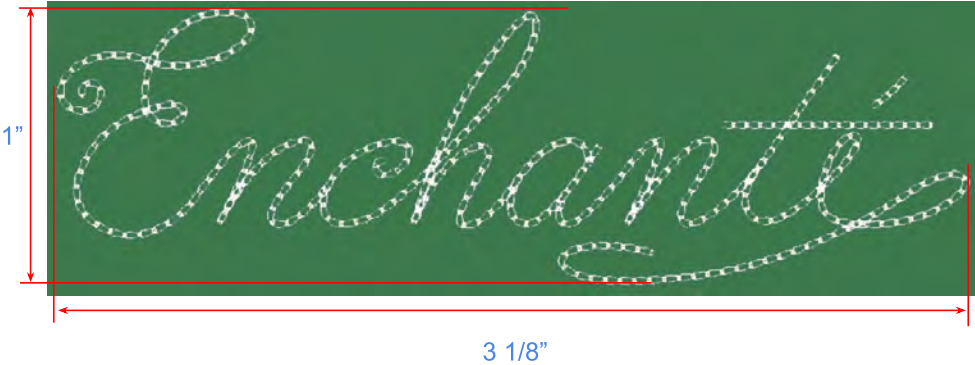


ENCHANTÉ

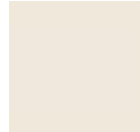
STYLE #	EN1024MC07	STYLE NAME	DOUBLE POCKET 1/4 ZIP	CATEGORY	TOP	SKETCH 
SEASON	FALL/AUSTIN 2024	XF	7/31/24	FABRIC DESCRIPTION	420GSM COTTON FLEECE	
FACTORY	UA	STAGE	PROTO	FABRIC CONTENT	100% COTTON	
SIZE RANGE	XS-XXL	SAMPLE SIZE	LARGE	TP BY:	ET	

ARTWORK

FRONT WEARER'S LEFT CHEST CHAIN STITCH EMBROIDERY



COLOR STANDARD:

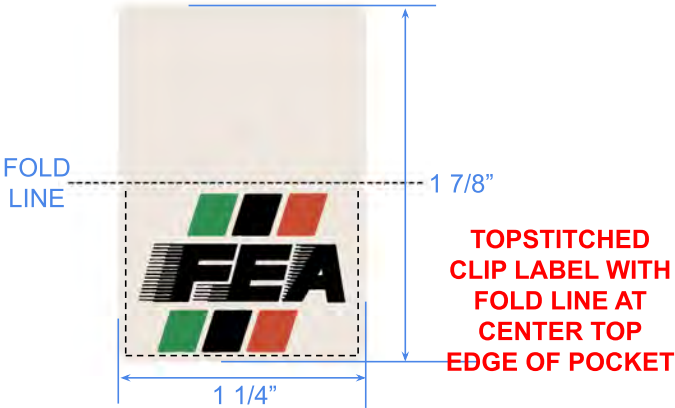


PANTONE®
11-0606 TCX
Pristine

ARTWORK:
CREAM
(PANTONE
11-0606 TCX)

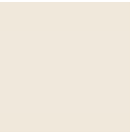
SHINY EMBROIDERY THREAD

FRONT WEARER'S LEFT POCKET WOVEN CLIP LABEL



TOPSTITCHED
CLIP LABEL WITH
FOLD LINE AT
CENTER TOP
EDGE OF POCKET

COLOR STANDARDS:



PANTONE®
11-0606 TCX
Pristine

GROUND &
TOPSTITCH
THREAD:
CREAM
(PANTONE
11-0606 TCX)



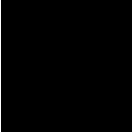
PANTONE®
17-6153 TCX
Fern Green

ARTWORK:
FERN GREEN
(PANTONE 17-6153
TCX)




PANTONE®
18-1445 TCX
Spicy Orange

ARTWORK:
SPICY ORANGE
(PANTONE 18-1445
TCX)



ARTWORK:
BLACK

ENCHANTÉ

STYLE #	EN1024MC07	STYLE NAME	DOUBLE POCKET 1/4 ZIP	CATEGORY	TOP	SKETCH 
SEASON	FALL/AUSTIN 2024	XF	7/31/24	FABRIC DESCRIPTION	420GSM COTTON FLEECE	
FACTORY	UA	STAGE	PROTO	FABRIC CONTENT	100% COTTON	
SIZE RANGE	XS-XXL	SAMPLE SIZE	LARGE	TP BY:	ET	

REFERENCE



FOLLOW FOR OVERALL FIT



REFERENCE FOR COLLAR & QUARTER ZIP DETAIL



REFERENCE FOR #5 METAL (NICKEL FINISH) ZIPPER WITH STANDARD YKK RECTANGULAR PULLER




SHINY EMBROIDERY THREAD AS PER AFFECTION COLLECTION 2023




REFERENCE FOR CHAIN STITCH EMBROIDERY

ENCHANTÉ

STYLE #	EN1024MC07	STYLE NAME	DOUBLE POCKET 1/4 ZIP	CATEGORY	TOP	<div>SKETCH</div> 
SEASON	FALL/AUSTIN 2024	XF	7/31/24	FABRIC DESCRIPTION	420GSM COTTON FLEECE	
FABRIC	UA	STAGE	PROTO	FABRIC CONTENT	100% COTTON	
SIZE RANGE	XS-XXL	SAMPLE SIZE	LARGE	TP BY:	ET	

			STAGE	PROTO							
			DATE	05.13.24							
POM	DESCRIPTION	TOL +/-	REQUEST								
1	CF FROM HPS TO HEM	1/2	28 1/4								
2	ACROSS SHOULDER (SEAM TO SEAM)	1/4	20 1/4								
3	BODY WIDTH (1" BLW ARMHOLE)-FLAT	1/4	24 7/8								
4	SWEEP STRAIGHT	1/4	21								
5	CF NECK DROP (FROM HPS TO SEAM)	1/4	3 1/8								
6	NECK WIDTH (SEAM TO SEAM)	1/4	8 1/2								
7	COLLAR HEIGHT AT CB	1/4	3 1/2								
8	COLLAR SPREAD	1/4	4 1/2								
9	CF ZIPPER LENGTH	1/4	6								
10	SLEEVE LENGTH (SHOULDER SEAM TO CUFF)	1/4	24 1/2								
11	ARMHOLE (STRAIGHT)	1/4	12								
12	BICEP (1" BELOW ARMHOLE)	1/4	10								
13	ELBOW (7 1/2" DOWN FROM UNDER ARMHOLE)	1/4	9								
14	SLEEVE OPENING WIDTH	1/4	3 3/4								
15	SLEEVE CUFF RIB TRIM HEIGHT	1/8	2 1/4								
16	BOTTOM RIB TRIM HEIGHT	1/8	2 3/8								
17	PATCH POCKET L x W	1/8	5 x 5								
18	TOP OF PATCH POCKET FROM HPS	1/8	7 1/8								
19	EDGE OF PATCH POCKET FROM CF	1/8	2								

ENCHANTÉ

STYLE #	EN1024MC07	STYLE NAME	DOUBLE POCKET 1/4 ZIP	CATEGORY	TOP	<div>SKETCH</div> 
SEASON	FALL/AUSTIN 2024	XF	7/31/24	FABRIC DESCRIPTION	420GSM COTTON FLEECE	
FACTORY	UA	STAGE	PROTO	FABRIC CONTENT	100% COTTON	
SIZE RANGE	XS-XXL	SAMPLE SIZE	LARGE	TP BY:	ET	


COLORWAY

BUYER:	LOYALIST
SEASON:	FALL 24
TYPE:	ACID WASH AS SUMMER 1
FABRIC	420GSM COTTON FLEECE
DETAIL:	
STYLE:	TBC
COLOR:	18-6028 TCX ROLLING HILLS
ATTN:	HANNAH
DATE SENT:	29-Apr-24


Colorway: Green (Rolling Hills)
Ground:
Rolling Hills Pantone 18-6028 TCX - Summer 1
2024 Acid Wash



ENCHANTÉ

STYLE #		EN1024MC07		STYLE NAME		DOUBLE POCKET 1/4 ZIP		CATEGORY		TOP		SKETCH			
SEASON		FALL/AUSTIN 2024		XF		7/31/24		FABRIC DESCRIPTION		420GSM COTTON FLEECE					
FACTORY		UA		STAGE		PROTO		FABRIC CONTENT		100% COTTON					
SIZE RANGE		XS-XXL		SAMPLE SIZE		LARGE		TP BY:		ET					
SELF				COMBO				LINING							
CUTTING DIRECTION				CUTTING DIRECTION				CUTTING DIRECTION							
PLACEMENT				PLACEMENT				PLACEMENT							
TREATMENT				TREATMENT				TREATMENT							
SAMPLE NOTES / CALLOUTS										1	2	3	4		
										COLOR NAME		Green (Rolling Hills)			
										COLOR #		Pantone 18-6028 TCX			
CUTTING MATERIAL(S)										COLOR OF MATERIAL					
ITEM	CONTENT	ARTICLE #	DESCRIPTION	SUPPLIER	WIDTH	YIELD	UOM	PLACEMENT	1	2	3	4			
SELF	100% COTTON	420 GSM COTTON FLEECE	420 GSM Cotton Fleece - as Summer 1 Acid Wash	UA				Bodice, Sleeves, CF Placket, Collar	Green (Pantone 18-6028 TCX)						
COMBO A	97% COTTON 3% SPANDEX	97/3 COTTON SPANDEX	97/3 Cotton Spandex Rib - as Summer 1 Acid Wash	UA				Sleeve Cuff, Hem Band	Green (Pantone 18-6028 TCX)						
LINING															
FUSE															
TRIM(S)										COLOR OF TRIM					
ITEM	IMAGE	ARTICLE #	DESCRIPTION	SUPPLIER	SIZE	QUANTITY	UOM	PLACEMENT	1	2	3	4			
TAPE		Factory Sourced	Cotton Herringbone Tape	UA	3/8"			Interior Neck Seam	DTM Green						
ZIPPER		Factory Sourced	#5 Metal Zipper with Rectangular Puller	UA	5GG	1	Units	1 @ CF	Green - Nickel						
WOVEN LABEL		Factory Sourced	"FEA" Woven Clip Label	UA		1	Units	Center Top of Front Wearer's Left Pocket	Cream - Green - Orange						
EMBROIDERY A		Factory Sourced	"Enchante" Chain Stitch Embroidery - Shiny Thread	UA				Front Top Wearer's Left Chest	Cream (Pantone 11-0606 TCX)						
THREAD A		Factory Sourced	Thread	UA				All Sewing / Topstitching	DTM Green						
LABELS + HANGTAGS + PACKAGING										COLOR OF TRIM					
ITEM	IMAGE	ARTICLE #	DESCRIPTION	SUPPLIER	SIZE	QUANTITY	UOM	PLACEMENT	1	2	3	4			
LABEL		TBC	Enchante Woven Label	TBC	TBC	1	Units	1 x CB Neck							
LABEL		TBC	Enchante Care Label - Alpha	TBC	TBC	1	Units	1 x Wearer's Left SS (See Label Guide)							
PACKAGING			Poly Bag - Updated Logo	Factory Sourced		1	Units								
PACKAGING			Barcode Sticker	Factory Sourced		1	Units								


RENGGLI

STYLE #	EN1024MC07	STYLE NAME	DOUBLE POCKET 1/4 ZIP	CATEGORY	TOP	<div>SKETCH</div> 
SEASON	FALL/AUSTIN 2024	XF	7/31/24	FABRIC DESCRIPTION	420GSM COTTON FLEECE	
FACTORY	UA	STAGE	PROTO	FABRIC CONTENT	100% COTTON	
SIZE RANGE	XS-XXL	SAMPLE SIZE	LARGE	TP BY:	ET	

LABEL GUIDE

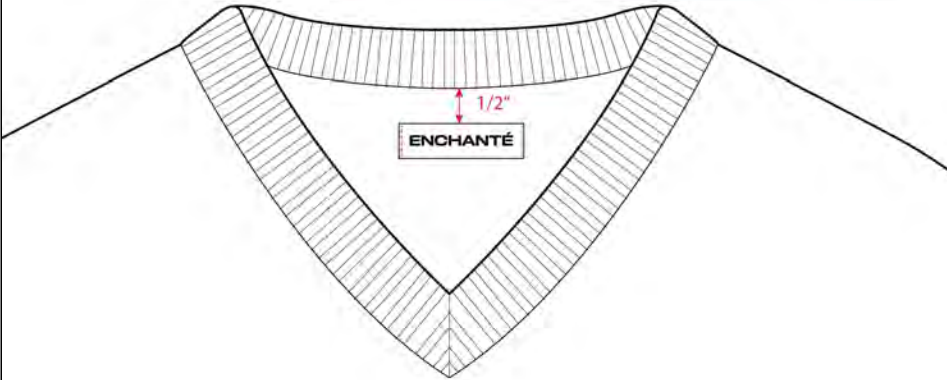
NOTES:

MAIN LABEL PLACEMENT





Label should be stitched through garment on both sides of label at **INSIDE EDGE OF FOLD LINE**
(Stitch should NOT be visible on front side of label)

Sewing thread color:
Top thread- DTM to label, Bobbin - DTM to Self




CARE LABEL PLACEMENT





1.13"


0.75"



2.5"

Insert at Wearer's Left SS,
2.5" Above top edge
of Rib Hem.

If there is no Rib Hem,
Insert at 2.5" Above Hem



2.5"
from hem

Rib Hem

Wearer's Left
Side Seam

Interior Construction View

Date Printed 5/13/2024