

ENCHANTÉ

STYLE #	EN1024MT15	STYLE NAME	BOXY PARTS & SERVICES T-SHIRT	CATEGORY	TOP
SEASON	AUSTIN 2024	XF	7/31/24	FABRIC DESCRIPTION	190 GSM SINGLE JERSEY
FACTORY	UA	STAGE	PROTO	FABRIC CONTENT	100% COTTON
SIZE RANGE	XS-XXL	SAMPLE SIZE	LARGE	TP BY:	HP



SELF: SINGLE JERSEY 100% COTTON 190 GSM
COMBO RIB: RIB 1X1 260 GSM

COLOR/TREATMENT:

- **GROUND:** Pantone 18-1248 TCX Rust with Acid wash as Summer 1
- **TRIM:** Pantone 11-0606 TCX Pristine No Acid wash


BUYER:	LOYALIST
SEASON:	FALL 24
TYPE:	ACID WASH AS SUMMER 1
FABRIC:	SINGLE JERSEY 230GSM
STYLE:	TBC
COLOR:	18-1248 TCX RUST
ATTN:	HANNAH
DTC SENT:	25-Apr-24



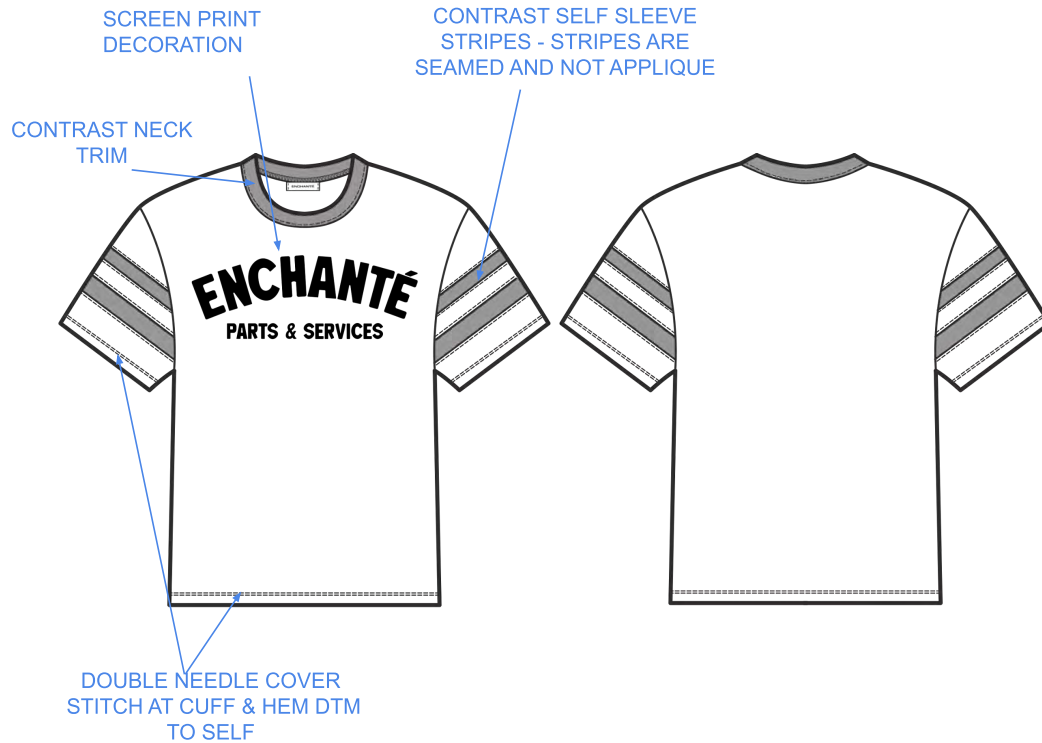
COVER REMARKS:

5/13/24 TP SENT - FACTORY TO DEVELOP PATTERN & LAUNCH PROTO SAMPLE

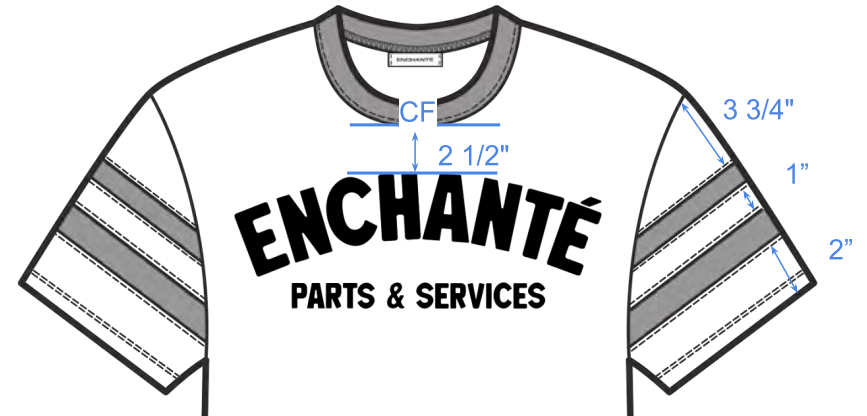
ENCHANTÉ

STYLE #	EN1024MT15	STYLE NAME	BOXY PARTS & SERVICES T-SHIRT	CATEGORY	TOP	
SEASON	AUSTIN 2024	XF	7/31/24	FABRIC DESCRIPTION	190 GSM SINGLE JERSEY	
FACTORY	UA	STAGE	PROTO	FABRIC CONTENT	100% COTTON	
SIZE RANGE	XS-XXL	SAMPLE SIZE	LARGE	TP BY:	HP	


CONSTRUCTION



SLEEVE STRIPE & SCREEN PRINT PLACEMENT



ENCHANTÉ

STYLE #	EN1024MT15	STYLE NAME	BOXY PARTS & SERVICES T-SHIRT	CATEGORY	TOP	
SEASON	AUSTIN 2024	XF	7/31/24	FABRIC DESCRIPTION	190 GSM SINGLE JERSEY	
FACTORY	UA	STAGE	PROTO	FABRIC CONTENT	100% COTTON	
SIZE RANGE	XS-XXL	SAMPLE SIZE	LARGE	TP BY:	HP	

ARTWORK


FRONT SCREEN PRINT DECORATION



SLEEVE STRIPES



ENCHANTÉ

STYLE #	EN1024MT15	STYLE NAME	BOXY PARTS & SERVICES T-SHIRT	CATEGORY	TOP	
SEASON	AUSTIN 2024	XF	7/31/24	FABRIC DESCRIPTION	190 GSM SINGLE JERSEY	
FACTORY	UA	STAGE	PROTO	FABRIC CONTENT	100% COTTON	
SIZE RANGE	XS-XXL	SAMPLE SIZE	LARGE	TP BY:	HP	

REFERENCE




FOLLOW FOR BOXY FIT




REFERENCE FOR SLEEVE STRIPE
CONSTRUCTION - STRIPES ARE SEAMED AND
NOT APPLIQUE

ENCHANTÉ

STYLE #	EN1024MT15	STYLE NAME	BOXY PARTS & SERVICES T-SHIRT	CATEGORY	TOP	
SEASON	AUSTIN 2024	XF	7/31/24	FABRIC DESCRIPTION	190 GSM SINGLE JERSEY	
FACTORY	UA	STAGE	PROTO	FABRIC CONTENT	100% COTTON	
SIZE RANGE	XS-XXL	SAMPLE SIZE	LARGE	TP BY:	HP	

			STAGE	PROTO									
			DATE	05.13.24									
POM	DESCRIPTION	TOL +/-	REQUEST										
1	CF FROM HPS TO HEM	1/2	26										
2	NECK BAND HEIGHT	1/8	3/4										
3	NECK WIDTH (SEAM TO SEAM)	1/2	7 5/8										
4	FRONT NECK DROP (HPS TO SEAM)	1/4	3 3/8										
5	BACK NECK DROP (HPS TO SEAM)	1/8	7/8										
6	ACROSS SHOULDER (SEAM TO SEAM)	1/2	20 5/8										
7	ACROSS FRONT (6" DOWN FROM HPS)	1/2	20										
8	CHEST (1" BELOW ARMHOLE)	1/2	23 1/4										
9	BOTTOM OPENING	1/2	23 1/2										
10	ARMHOLE STRAIGHT	3/8	9 3/4										
11	SLEEVE LENGTH FROM SHOULDER SEAM	1/2	8 1/2										
12	BICEP (1" BELOW ARMHOLE)	1/4	9										
13	SLEEVE OPENING (RELAXED)	1/4	7 1/4										
14	SLEEVE CUFF RIB TRIM HEIGHT	1/8	3/4										
15	HEM RIB HEIGHT	1/8	3/4										

ENCHANTÉ

STYLE #	EN1024MT15	STYLE NAME	BOXY PARTS & SERVICES T-SHIRT	CATEGORY	TOP	
SEASON	AUSTIN 2024	XF	7/31/24	FABRIC DESCRIPTION	190 GSM SINGLE JERSEY	
FACTORY	UA	STAGE	PROTO	FABRIC CONTENT	100% COTTON	
SIZE RANGE	XS-XXL	SAMPLE SIZE	LARGE	TP BY:	HP	

COLORWAY



Colorway: Rust

Ground:

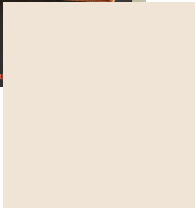
18-1248 TCX Rust with Acid as Summer 1

Neck Trim & Sleeve Stripe:

Pantone 11-0606 TCX Pristine - no Acid wash

Front Decoration:


Screen print - Match to Pantone 11-0606 TCX Pristine




PANTONE®
11-0606 TCX
Pristine



ENCHANTÉ

STYLE #	EN1024MT15		STYLE NAME	BOXY PARTS & SERVICES T-SHIRT		CATEGORY	TOP		SKETCH			
SEASON	AUSTIN 2024		XF	7/31/24		FABRIC DESCRIPTION	190 GSM SINGLE JERSEY					
FACTORY	UA		STAGE	PROTO		FABRIC CONTENT	100% COTTON					
SIZE RANGE	XS-XXL		SAMPLE SIZE	LARGE		TP BY:	HP					
SELF			COMBO			LINING						
CUTTING DIRECTION			CUTTING DIRECTION			CUTTING DIRECTION						
PLACEMENT			PLACEMENT			PLACEMENT						
TREATMENT			TREATMENT			TREATMENT						
SAMPLE NOTES / CALLOUTS									1	2	3	4
									COLOR NAME			
									Rust			
									COLOR #			
									Pantone 18-1248 TCX			
CUTTING MATERIAL(S)									COLOR OF MATERIAL			
ITEM	CONTENT	ARTICLE #	DESCRIPTION	SUPPLIER	WIDTH	YIELD	UOM	PLACEMENT	1	2	3	4
SELF	100% COTTON		Single Jersey 190 GSM - Summer 1 acid treatment	UA	180cm			Bodice, Sleeves	Rust (DTM Pantone 18-1248 TCX)			
COMBO 1	100% COTTON		Single Jersey 190 GSM	UA	180cm			Stripes at sleeve	Cream (DTM Pantone 11-0606 TCX)			
COMBO 2	100% COTTON		Rib 1x1 (260GSM)	UA	180cm			Neck Trim	Cream (DTM Pantone 11-0606 TCX)			
FUSE												
TRIM(S)									COLOR OF TRIM			
ITEM	IMAGE	ARTICLE #	DESCRIPTION	SUPPLIER	SIZE	QUANTITY	UOM	PLACEMENT	1	2	3	4
THREAD A		Factory Sourced	Thread	Factory Sourced				All Sewing / Topstitching	DTM Rust			
PRINT A		Factory Sourced	Plastisol Ink - Front Logo	Factory Sourced				Front Decoration	Cream (11-0606 TCX)			
LABELS + HANGTAGS + PACKAGING									COLOR OF TRIM			
ITEM	IMAGE	ARTICLE #	DESCRIPTION	SUPPLIER	SIZE	QUANTITY	UOM	PLACEMENT	1	2	3	4
LABEL		TBC	Enchante Woven Label	TBC	TBC	1	Units	1 x CB Neck				
LABEL		TBC	Enchante Care Label - Alpha	TBC	TBC	1	Units	1 x Wearer's Left SS (See Label Guide)				
PACKAGING			Poly Bag - Updated Logo	Factory Sourced	14" x 20"	1	Units					
PACKAGING			Barcode Sticker	Factory Sourced		1	Units					

RENGGLI

STYLE #	EN1024MT15	STYLE NAME	BOXY PARTS & SERVICES T-SHIRT	CATEGORY	TOP	
SEASON	AUSTIN 2024	XF	7/31/24	FABRIC DESCRIPTION	190 GSM SINGLE JERSEY	
FACTORY	UA	STAGE	PROTO	FABRIC CONTENT	100% COTTON	
SIZE RANGE	XS-XXL	SAMPLE SIZE	LARGE	TP BY:	HP	

LABEL GUIDE

NOTES:

MAIN LABEL PLACEMENT	CARE LABEL PLACEMENT
<div data-bbox="100 699 344 769" data-label="Image"> </div> <p data-bbox="401 651 957 776">Label should be stitched through garment on both sides of label at INSIDE EDGE OF FOLD LINE (Stitch should NOT be visible on front side of label)</p> <p data-bbox="401 812 915 870">Sewing thread color: Top thread- DTM to label, Bobbin - DTM to Self</p> <div data-bbox="46 927 993 1305" data-label="Diagram"> </div>	<div data-bbox="1066 558 1394 1474" data-label="Diagram"> </div> <div data-bbox="1612 558 1976 1484" data-label="Diagram"> </div> <p data-bbox="1339 1092 1612 1182">Insert at Wearer's Left SS, 2.5" Above top edge of Rib Hem.</p> <p data-bbox="1339 1219 1612 1279">If there is no Rib Hem, Insert at 2.5" Above Hem</p> <p data-bbox="1822 1073 1976 1133">Wearer's Left Side Seam</p> <p data-bbox="1646 1154 1745 1203">2.5" from hem</p> <p data-bbox="1738 1393 1843 1425">Rib Hem</p> <p data-bbox="1646 1458 1934 1484">Interior Construction View</p>