

## KOALA

PRINTED: 26-Apr-24

STYLE: PLS0924T01

SEASON: SEPTEMBER 2024

DIVISION: UNISEX

TYPE: CUT AND SEW KNIT

DESCRIPTION: FLEECE RUGBY

FACTORY: UA

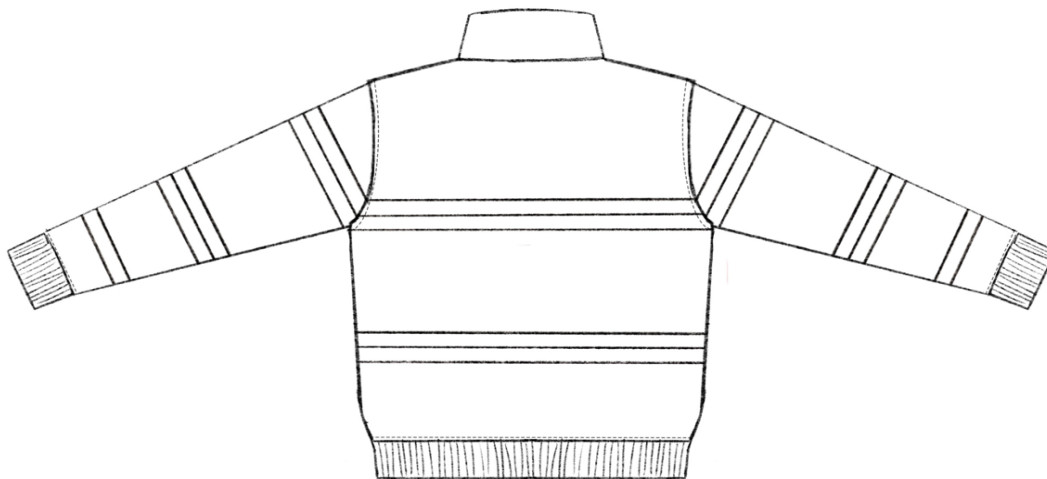
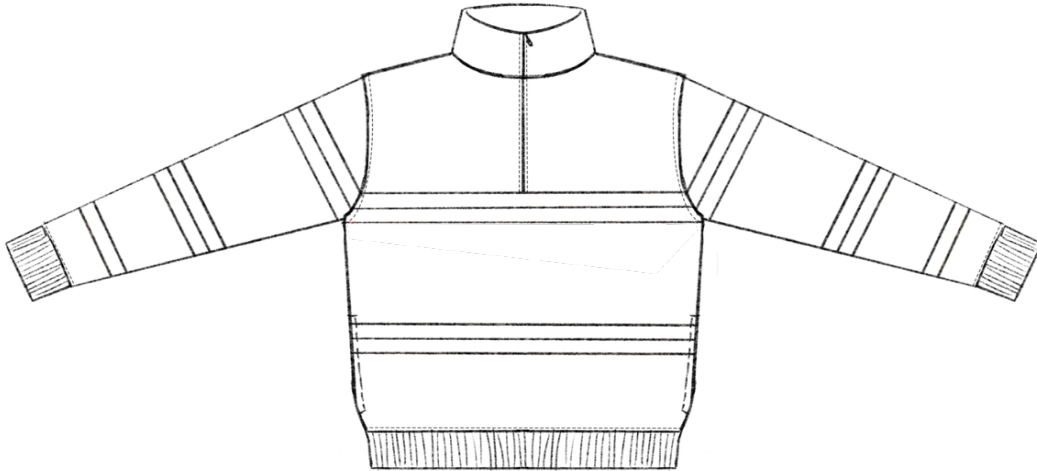
FABRIC: COTTON FLEECE

TECH PACK BY: DANIEL DUGOFF

SIZE RANGE: XS - 5XL

LAST EDIT DATE: 22-Apr-24

### SKETCH



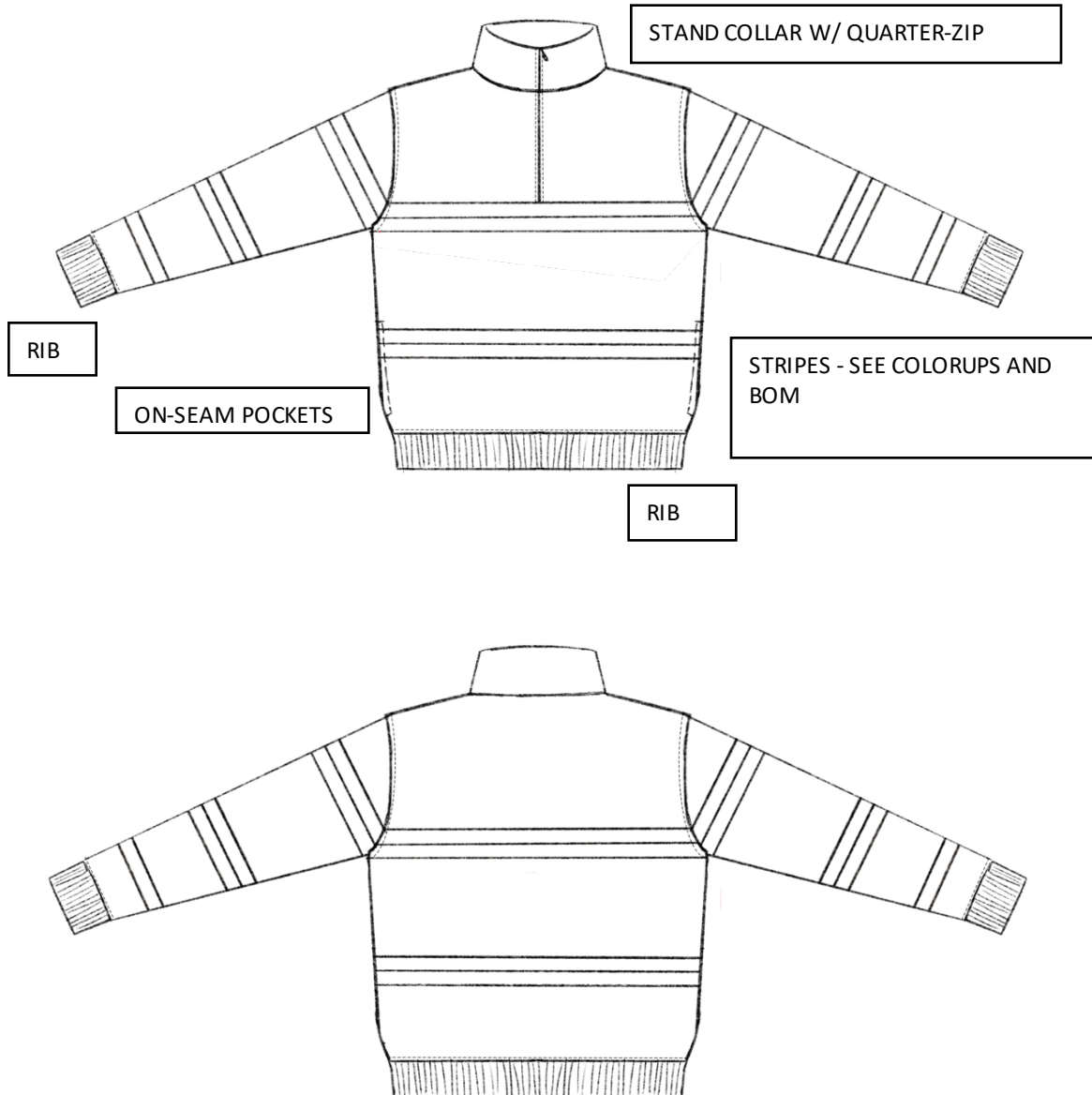
# KOALA

PRINTED: 26-Apr-24

STYLE: PLS0924T01  
DIVISION: UNISEX  
DESCRIPTION: FLEECE RUGBY  
FABRIC: COTTON FLEECE  
SIZE RANGE: XS - 5XL

SEASON: SEPTEMBER 2024  
TYPE: CUT AND SEW KNIT  
FACTORY: UA  
TECH PACK BY: DANIEL DUGOFF  
LAST EDIT DATE: 22-Apr-24

## DETAIL SKETCH



## KOALA

PRINTED: 26-Apr-24

STYLE: PLS0924T01

DIVISION: UNISEX

DESCRIPTION: FLEECE RUGBY

FABRIC: COTTON FLEECE

SIZE RANGE: XS - 5XL

SEASON: SEPTEMBER 2024

TYPE: CUT AND SEW KNIT

FACTORY: UA

TECH PACK BY: DANIEL DUGOFF

LAST EDIT DATE: 22-Apr-24

### COLORUP

Stitch (Knitwear):

Colors:

Main

Med. Blue 17-4032 TPG

Contrast cream wide stripe

Cream 11-0106 TPG

Contrast eggplant stripe

Eggplant 19-3022 TPG

Contrast wrist stripe

Lt. Blue 283 C

Details:

"Pleasing" chainstitch embroidery  
in red 187 C



## KOALA

PRINTED: 26-Apr-24

STYLE: PLS0924T01

DIVISION: UNISEX

DESCRIPTION: FLEECE RUGBY

FABRIC: COTTON FLEECE

SIZE RANGE: XS - 5XL

SEASON: SEPTEMBER 2024

TYPE: CUT AND SEW KNIT

FACTORY: UA

TECH PACK BY: DANIEL DUGOFF

LAST EDIT DATE: 22-Apr-24

---

### REFERENCE IMAGES

---



**KOALA**

**PRINTED: 26-Apr-24**

**STYLE:** PLS0924T01

**SEASON:** SEPTEMBER 2024

**DIVISION:** UNISEX

**TYPE:** CUT AND SEW KNIT

**DESCRIPTION:** FLEECE RUGBY

**FACTORY:** UA

**FABRIC:** COTTON FLEECE

**TECH PACK BY:** DANIEL DUGOFF

**SIZE RANGE:** XS - 5XL

**LAST EDIT DATE:** 22-Apr-24

---

PRINT LAYOUT

---

Reference for:

“Pleasing” chain stitch

*Pleasing*

SEE ARTWORK FILE "Pleasing chain stitch.jpg" FOR CHEST EMBROIDERY CHAIN STITCH

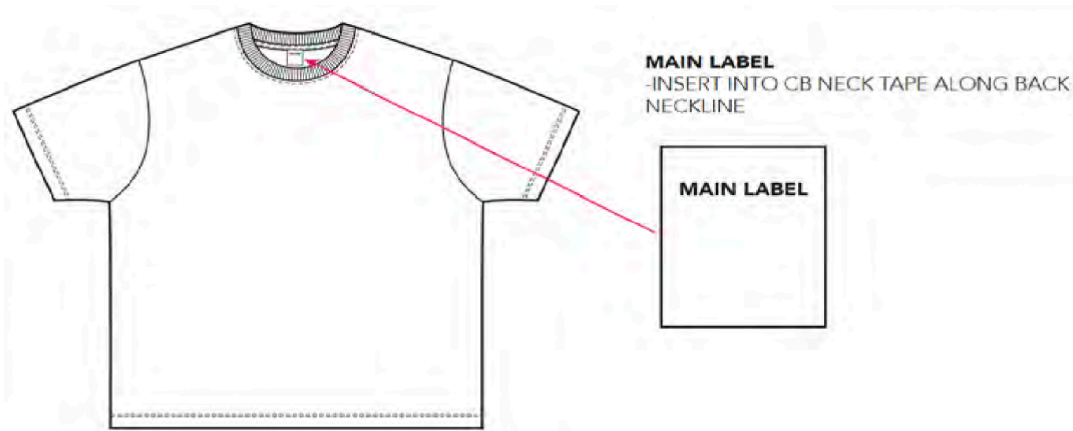
**KOALA**

PRINTED: 26-Apr-24

STYLE: PLS0924T01  
DIVISION: UNISEX  
DESCRIPTION: FLEECE RUGBY  
FABRIC: COTTON FLEECE  
SIZE RANGE: XS - 5XL

SEASON: SEPTEMBER 2024  
TYPE: CUT AND SEW KNIT  
FACTORY: UA  
TECH PACK BY: DANIEL DUGOFF  
LAST EDIT DATE: 22-Apr-24

LABEL PLACEMENT



KOALA

PRINTED: 26-Apr-24

STYLE: PLS0924T01  
DIVISION: UNISEX  
DESCRIPTION: FLEECE RUGBY  
FABRIC: COTTON FLEECE  
SIZE RANGE: XS - 5XL

SEASON: SEPTEMBER 2024  
TYPE: CUT AND SEW KNIT  
FACTORY: UA  
TECH PACK BY: DANIEL DUGOFF  
LAST EDIT DATE: 22-Apr-24

---

OVERVIEW

---

**FIT REFERENCE:** DEVELOP FIT FROM SPEC (SEE GRAY REF. IMAGE)

**THREAD:** MARA 60  
SPI: 8-10

**FABRICS:** COLOR 1: BODY AND COLLAR  
COLOR 2: WIDE STRIPE  
COLOR 3: NARROW STRIPES  
COLOR 4: WRIST STRIPE  
RIB  
POCKETING

**TRIM + PLACEMENT:** ZIPPER @ CB NECK

**TOPSTITCH + PLACEMENT:** 8MM SINGLE NEEDLE AT COLLAR EDGE  
8MM EITHER SIDE OF ZIPPER OPENING  
8MM SINGLE NEEDLE AT POCKET OPENING  
8MM SINGLE NEEDLE AT ALL RIB SEAMS ON BODY (CATCHING RIB SEAM ALLOWANCE)

**CONSTRUCTION DETAILS:** RUGBY-STYLE PULLOVER  
DOUBLE LAYER SELF COLLAR AS REFERENCE IMAGE  
QUARTER-ZIP AS REFERENCE IMAGE  
POCKET OPENING @ SS W/ TUBULAR POCKET CONNECTING THROUGH  
LOGO EMBROIDERY CHAIN STITCHED ON WEARER'S LEFT CHEST  
COLORBLOCKING:  
- OUR PREFERENCE IS THAT THE STRIPE IS ENGINEERED INTO THE FABRIC  
- IF ENGINEERED STRIPE IS NOT POSSIBLE, APPLIED STRIPES IN COMBO COLOR SELF

26-Apr-24

SEASON: SEPTEMBER 2024  
TYPE: CUT AND SEW KNIT  
FACTORY: UA  
TECH PACK BY: DANIEL DUGOFF  
LAST EDIT DATE: 22-Apr-24

## SAMPLE SPECS

[illegible]



## 26-Apr-24

SEASON: SEPTEMBER 2024  
TYPE: CUT AND SEW KNIT  
FACTORY: UA  
TECH PACK BY: DANIEL DUGOFF  
LAST EDIT DATE: 22-Apr-24

---

GRADED SPECS

---

[illegible]


KOALA

PRINTED: 26-Apr-24

STYLE: PLS0924T01  
DIVISION: UNISEX  
DESCRIPTION: FLEECE RUGBY  
FABRIC: COTTON FLEECE  
SIZE RANGE: XS - 5XL

SEASON: SEPTEMBER 2024  
TYPE: CUT AND SEW KNIT  
FACTORY: UA  
TECH PACK BY: DANIEL DUGOFF  
LAST EDIT DATE: 22-Apr-24

BOM

				
	PLS0924T01			
COLOR 1	MEDIUM BLUE			
VENDOR:	COLOR CODE: 17-4032 TPG			
QUALITY: COTTON FLEECE	LAB DIP #:			
DESCRIPTION:	NOTE:			
COLOR 2	CREAM			
VENDOR:	COLOR CODE: 11-0106 TPG			
QUALITY: COTTON FLEECE	LAB DIP #:			
DESCRIPTION:	NOTE:			
COLOR 3	EGGPLANT			
VENDOR:	COLOR CODE: 19-3022 TPG			
QUALITY: COTTON FLEECE	LAB DIP #:			
DESCRIPTION:	NOTE:			
COLOR 4	LIGHT BLUE			
VENDOR:	COLOR CODE: 283 C			
QUALITY: COTTON FLEECE	LAB DIP #:			
DESCRIPTION:	NOTE:			
RIB	MEDIUM BLUE			
VENDOR:	COLOR CODE: 17-4032 TPG			
QUALITY:	LAB DIP #:			
DESCRIPTION:	NOTE:			
EMBROIDERY THREAD	RED			
WEIGHT:	COLOR CODE: 187 C			
SPI:	PLACEMENT:			
BODY THREAD	MATCH TO BODY COLOR			
WEIGHT: MARA 60	COLOR CODE:			
SPI: 8-10	PLACEMENT:			
ZIPPER	SHINY SILVER			
VENDOR:	PLACEMENT: CF			
CODE: #S	PLACEMENT #:			
NOTE:				
MAIN LABEL				
VENDOR:	PLACEMENT: INSIDE CB NECK			
CODE:	PLACEMENT #:			
NOTE:				
CARE LABEL				
VENDOR:	PLACEMENT: INSIDE WR'S LEFT SS			
CODE:	PLACEMENT #:			
NOTE:				
HANGTAG				
VENDOR:	PLACEMENT:			
CODE:	PLACEMENT #:			
NOTE:				
UPC LABEL				
CODE:	PLACEMENT:			
	PLACEMENT #:			
POLYBAG				
VENDOR:	FOLDING TYPE:			
CODE:				
NOTE:				