

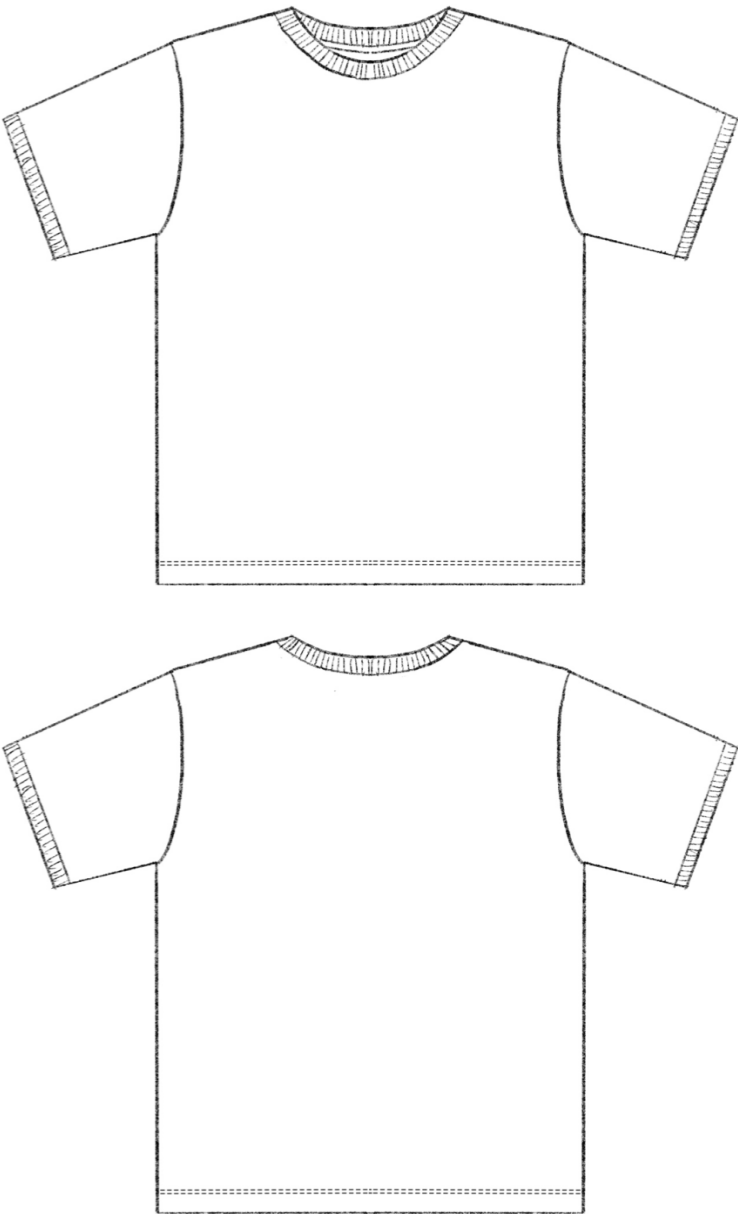
KOALA

PRINTED: 26-Apr-24

STYLE: PLS0924T09
DIVISION: UNISEX
DESCRIPTION: SKUNK RINGER T-SHIRT
FABRIC: JERSEY
SIZE RANGE: XS - 5XL

SEASON: SEPTEMBER 2024
TYPE: CUT AND SEW KNIT
FACTORY: UA
TECH PACK BY: DANIEL DUGOFF
LAST EDIT DATE: 24-Apr-24

SKETCH



KOALA

PRINTED: 26-Apr-24

STYLE: PLS0924T09

SEASON: SEPTEMBER 2024

DIVISION: UNISEX

TYPE: CUT AND SEW KNIT

DESCRIPTION: SKUNK RINGER T-SHIRT

FACTORY: UA

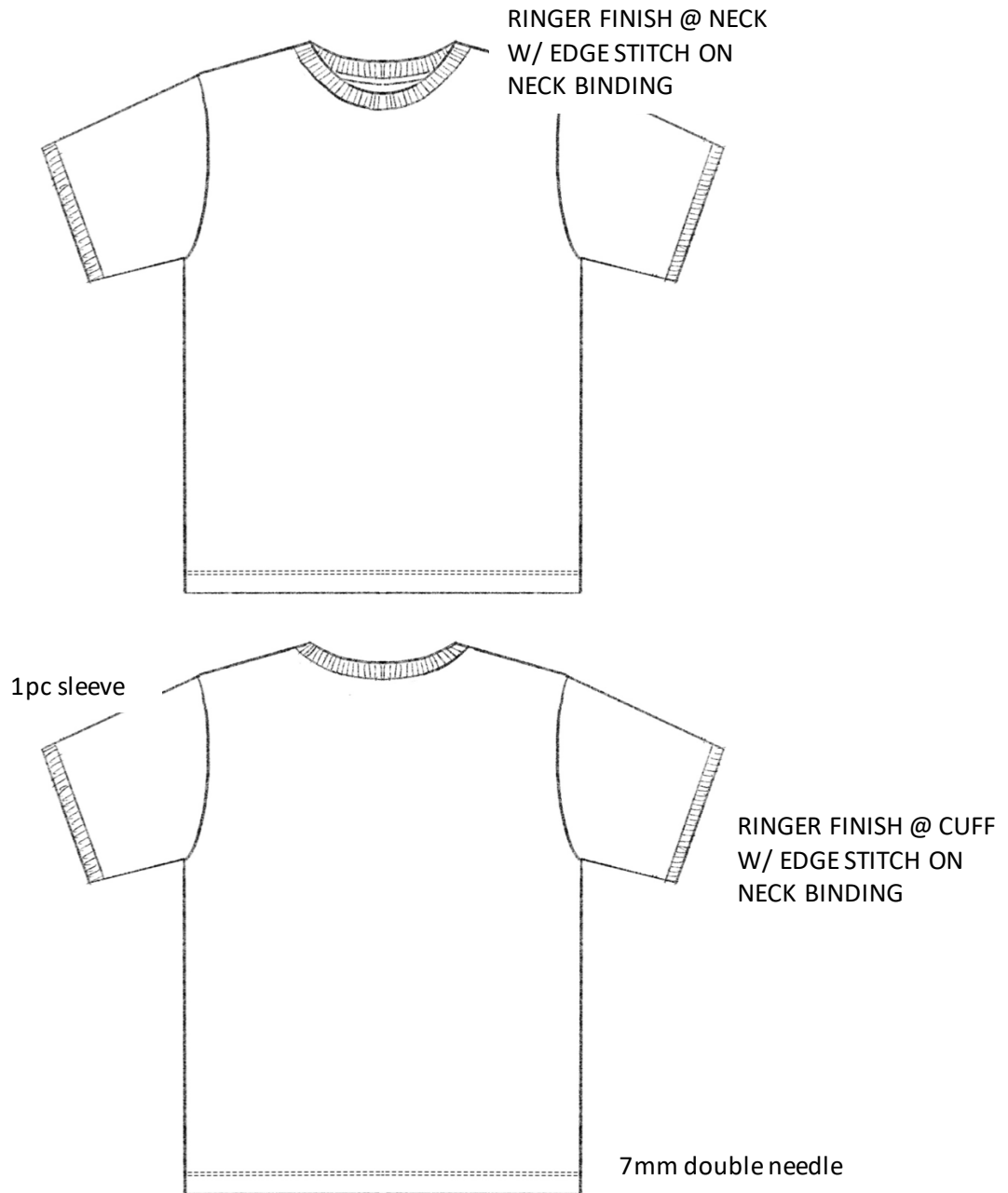
FABRIC: JERSEY

TECH PACK BY: DANIEL DUGOFF

SIZE RANGE: XS - 5XL

LAST EDIT DATE: 24-Apr-24

DETAIL SKETCH



KOALA

PRINTED: 26-Apr-24

STYLE: PLS0924T09

SEASON: SEPTEMBER 2024

DIVISION: UNISEX

TYPE: CUT AND SEW KNIT

DESCRIPTION: SKUNK RINGER T-SHIRT

FACTORY: UA

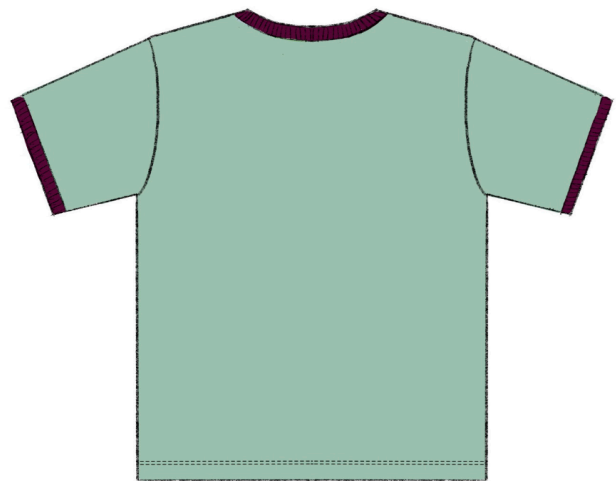
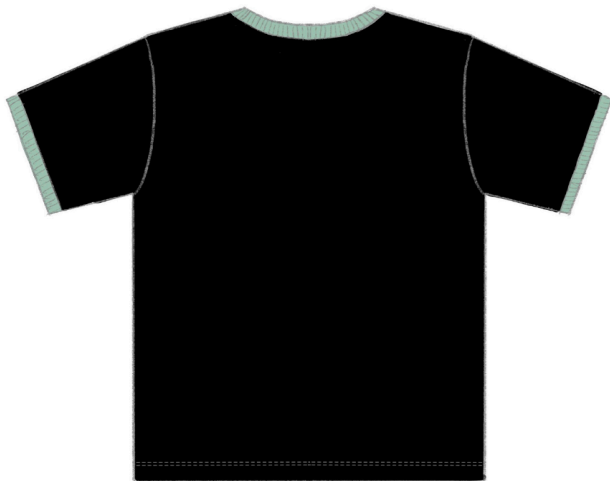
FABRIC: JERSEY

TECH PACK BY: DANIEL DUGOFF

SIZE RANGE: XS - 5XL

LAST EDIT DATE: 24-Apr-24

COLORUPS



KOALA

PRINTED: 26-Apr-24

STYLE: PLS0924T09

DIVISION: UNISEX

DESCRIPTION: SKUNK RINGER T-SHIRT

FABRIC: JERSEY

SIZE RANGE: XS - 5XL

SEASON: SEPTEMBER 2024

TYPE: CUT AND SEW KNIT

FACTORY: UA

TECH PACK BY: DANIEL DUGOFF

LAST EDIT DATE: 24-Apr-24

PRINT LAYOUT



Reference for:

Printed Graphic

"Pleasing" text color will be different for each colorway

For Lt. Green Ringer T, the text will be 19-3022 TPG

For Black Ringer T, the text will be 12-5410 TPG

Artwork: "Mascot Patch.pdf"

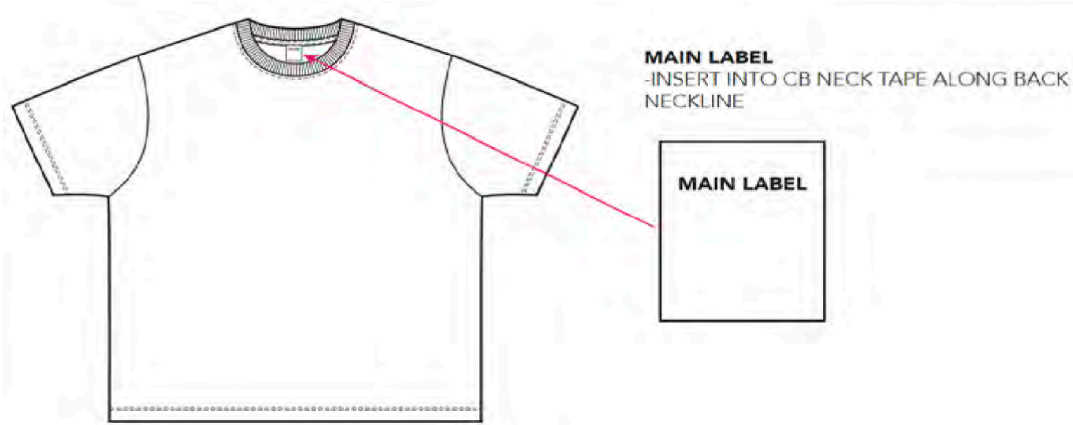
KOALA

PRINTED: 26-Apr-24

STYLE: PLS0924T09
DIVISION: UNISEX
DESCRIPTION: SKUNK RINGER T-SHIRT
FABRIC: JERSEY
SIZE RANGE: XS - 5XL

SEASON: SEPTEMBER 2024
TYPE: CUT AND SEW KNIT
FACTORY: UA
TECH PACK BY: DANIEL DUGOFF
LAST EDIT DATE: 24-Apr-24

LABEL PLACEMENT



KOALA

PRINTED: 26-Apr-24

STYLE: PLS0924T09
DIVISION: UNISEX
DESCRIPTION: SKUNK RINGER T-SHIRT
FABRIC: JERSEY
SIZE RANGE: XS - 5XL

SEASON: SEPTEMBER 2024
TYPE: CUT AND SEW KNIT
FACTORY: UA
TECH PACK BY: DANIEL DUGOFF
LAST EDIT DATE: 24-Apr-24

OVERVIEW

FIT REFERENCE: CARRYOVER AS PLS0524T25 WITH RINGER DETAIL

THREAD: MARA 100

SPI: 10-12

FABRICS: BODY: SINGLE JERSEY 100% COTTON SD 190 GSM
RIB: RIB 1x1 100% COTTON OE 16S/1 260 GSM

TRIM + PLACEMENT: MAIN LABEL @ CBN
CLIP LABEL @ SS
CARE LABEL @ INSIDE WEARER'S LEFT SS

TOPSTITCH + PLACEMENT: EDGE STITCH AROUND NECK AND CUFF BINDING ON RIB
7MM DOUBLE NEEDLE 25MM FROM HEM AT SLEEVE AND SWEEP OPENING
ALL INSIDE SEAMS IN LOCKING MERROW

CONSTRUCTION DETAILS: CREW NECK SHORT SLEEVE T-SHIRT
BOUND RIB @ NECK
BOUND RIB @ SLEEVE OPENING
BIND INSIDE BACK NECK AND SHOULDER IN JERSEY

CONSTRUCTION DETAILS: GRAPHIC: PLASTISOL

26-Apr-24

SEASON: SEPTEMBER 2024
TYPE: CUT AND SEW KNIT
FACTORY: UA
TECH PACK BY: DANIEL DUGOFF
LAST EDIT DATE: 24-Apr-24

SAMPLE SPECS

[illegible]

26-Apr-24

SEASON: SEPTEMBER 2024
TYPE: CUT AND SEW KNIT
FACTORY: UA
TECH PACK BY: DANIEL DUGOFF
LAST EDIT DATE: 24-Apr-24

GRADED SPECS

[illegible]

					
		PLS0924T09-BLK	PLS0924T09-LGR		
SELF FABRIC		BLACK	LIGHT GREEN		
VENDOR:		COLOR CODE:	COLOR CODE:		
QUALITY:	JERSEY	LAB DIP #:	LAB DIP #:		
DESCRIPTION:		NOTE:	NOTE:		
RIB		LIGHT GREEN	EGGPLANT		
VENDOR:		COLOR CODE:	COLOR CODE:		
QUALITY:	MATCHING RB	LAB DIP #:	LAB DIP #:		
DESCRIPTION:		NOTE:	NOTE:		
THREAD 1		BLACK	LIGHT GREEN		
WEIGHT:	MARA 100	COLOR CODE:	COLOR CODE:		
SPI:	10-12	PLACEMENT:	PLACEMENT:		
PLASTISOL PRINT					
		COLOR CODE:	COLOR CODE:		
		PLACEMENT:	PLACEMENT:		
MAIN LABEL		PLACEMENT:	PLACEMENT:		
VENDOR:		PLACEMENT #:	PLACEMENT #:		
CODE:					
NOTE:					
CARE LABEL		PLACEMENT:	PLACEMENT:		
VENDOR:		PLACEMENT #:	PLACEMENT #:		
CODE:					
NOTE:					
CLIP LABEL		TPC CLIP LABEL	TPC CLIP LABEL		
VENDOR:		PLACEMENT:	PLACEMENT:		
CODE:		PLACEMENT #:	PLACEMENT #:		
NOTE:					
HANGTAG		PLACEMENT:	PLACEMENT:		
VENDOR:		PLACEMENT #:	PLACEMENT #:		
CODE:					
NOTE:					
UPC LABEL		PLACEMENT:	PLACEMENT:		
CODE:		PLACEMENT #:	PLACEMENT #:		
POLYBAG		FOLDING TYPE:	FOLDING TYPE:		
VENDOR:					
CODE:					
NOTE:					