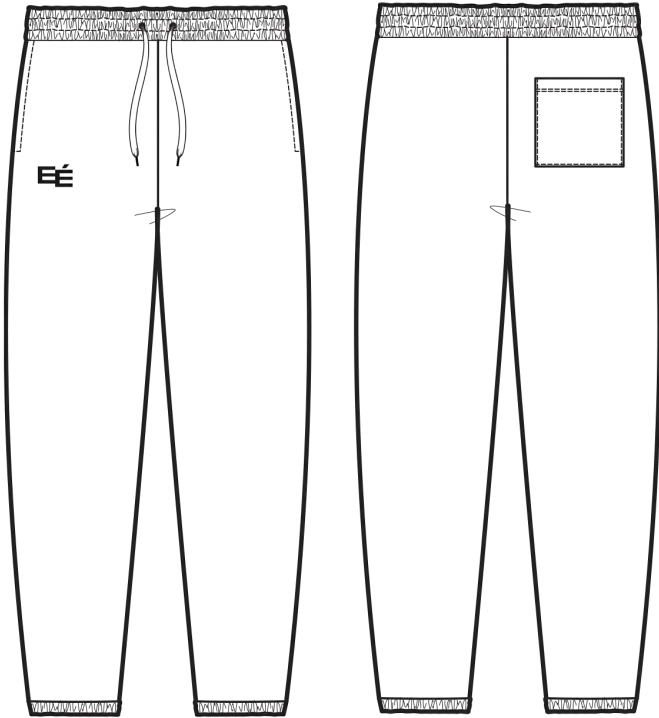


ENCHANTÉ

STYLE #	ENTBC24MP08	STYLE NAME	SWEATPANT	CATEGORY	BOTTOMS
SEASON	CORE 2024	DELIVERY	TBC	FABRIC DESCRIPTION	420GSM COTTON FLEECE
FACTORY	UA	STAGE	PROTO	FABRIC CONTENT	100% COTTON
SIZE RANGE	XS-XXL	SAMPLE SIZE	MEDIUM	TP BY:	ET



SELF: 100% COTTON FLEECE 420GSM ART#VTK5971B

COLORS:
- **BLACK:** PLS FOLLOW BLACK WASH OF REFERENCE SAMPLE SENT



COVER REMARKS:

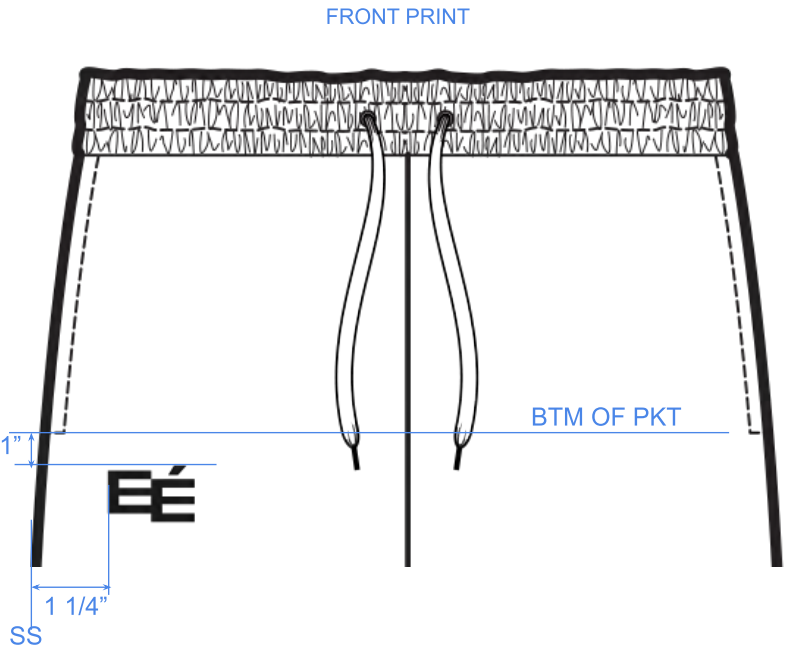
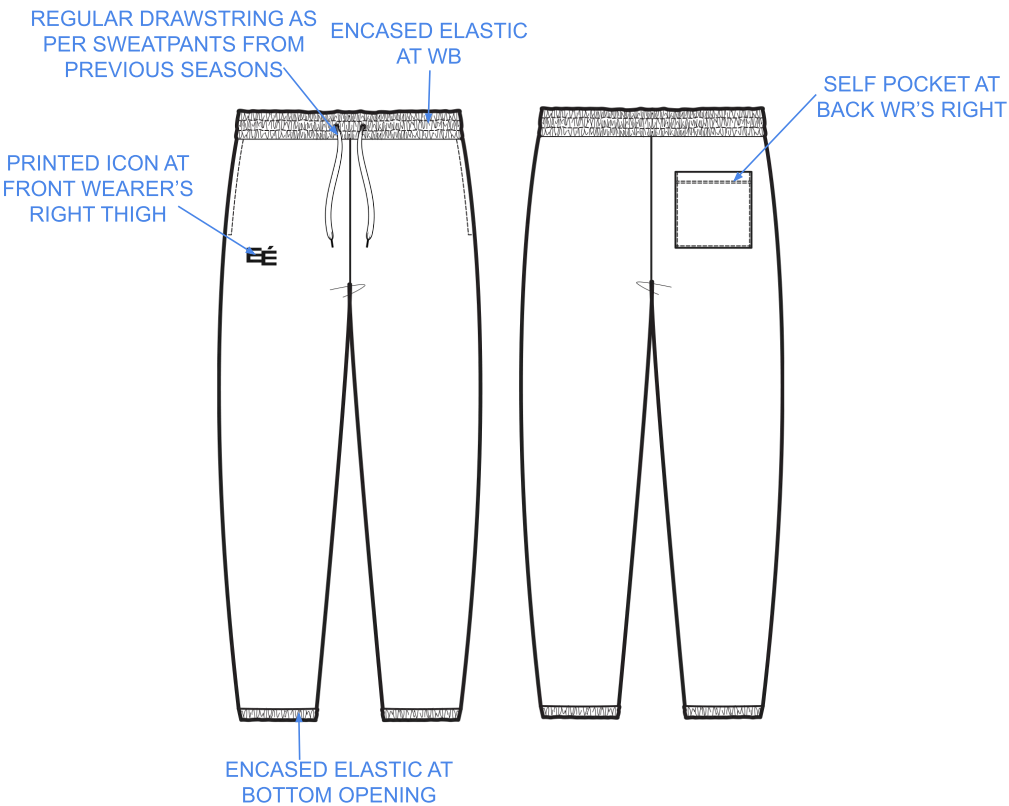
3/15/24 TP SENT - FACTORY TO DEVELOP PATTERN, SUBMIT LAB-DIPS, & LAUNCH PROTO SAMPLE

5/16/24 FIT COMMENTS SENT - FCTY TO MAKE CORRECTION & SUBMIT 2ND PROTO

ENCHANTÉ

STYLE #	ENTBC24MP08	STYLE NAME	SWEATPANT	CATEGORY	BOTTOMS	SKETCH 
SEASON	CORE 2024	DELIVERY	TBC	FABRIC DESCRIPTION	420GSM COTTON FLEECE	
FACTORY	UA	STAGE	PROTO	FABRIC CONTENT	100% COTTON	
SIZE RANGE	XS-XXL	SAMPLE SIZE	MEDIUM	TP BY:	ET	

CONSTRUCTION

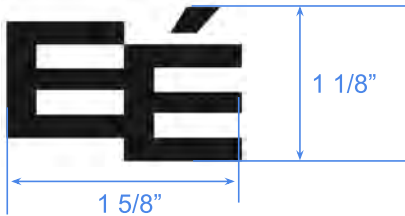


ENCHANTÉ

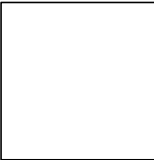
STYLE #	ENTBC24MP08	STYLE NAME	SWEATPANT	CATEGORY	BOTTOMS	SKETCH 
SEASON	CORE 2024	DELIVERY	TBC	FABRIC DESCRIPTION	420GSM COTTON FLEECE	
FACTORY	UA	STAGE	PROTO	FABRIC CONTENT	100% COTTON	
SIZE RANGE	XS-XXL	SAMPLE SIZE	MEDIUM	TP BY:	ET	

ARTWORK

FRONT EE ICON PRINT



COLOR STANDARD:



OPTIC WHITE

ENCHANTÉ

STYLE #	ENTBC24MP08	STYLE NAME	SWEATPANT	CATEGORY	BOTTOMS	SKETCH 
SEASON	CORE 2024	DELIVERY	TBC	FABRIC DESCRIPTION	420GSM COTTON FLEECE	
FACTORY	UA	STAGE	PROTO	FABRIC CONTENT	100% COTTON	
SIZE RANGE	XS-XXL	SAMPLE SIZE	MEDIUM	TP BY:	ET	

REFERENCE



FOLLOW REFERENCE SAMPLE SENT ABOVE FOR BLACK
COLOR & WASH STANDARD

ENCHANTÉ

STYLE #	ENTBC24MP08	STYLE NAME	SWEATPANT	CATEGORY	BOTTOMS	SKETCH 
SEASON	CORE 2024	DELIVERY	TBC	FABRIC DESCRIPTION	420GSM COTTON FLEECE	
FACTORY	UA	STAGE	PROTO	FABRIC CONTENT	100% COTTON	
SIZE RANGE	XS-XXL	SAMPLE SIZE	MEDIUM	TP BY:	ET	

			STAGE	PROTO	PROTO	PROTO 2					
			DATE	03.15.24	05.02.24	05.16.24					
POM	DESCRIPTION	TOL +/-	REQUEST	SAMPLE	REQUEST						
1	WAISTBAND AT TOP EDGE (ON FLAT)	1/2	15	15 3/4	15 3/4						
2	WAISTBAND HEIGHT	1/8	1 3/4	1 3/4	1 3/4						
3	POSITION HIP FROM TOP WB	1/8	8	8	8						
4	HIP WIDTH	1/2	23	23 5/8	23 5/8						
5	FRONT RISE - FROM TOP OF WB WITHOUT GUSSET	3/8	10 1/2	11	11						
6	BACK RISE - FROM TOP OF WB WITHOUT GUSSET	3/8	12	11 3/4	11 3/4						
7	THIGH - AT CROTCH WITHOUT GUSSET	1/2	13	12 3/4	12 3/4						
8	KNEE - 13" FROM CROTCH	3/8	10	9 1/2	9 1/2						
9	LEG OPENING - RELAXED	1/4	4 1/2	4 1/4	4 1/4						
10	INSEAM	1/2	30	30	30						
11	FRONT POCKET LENGTH	1/4	6	6 1/8	6 1/8						
12	BACK POCKET WIDTH	1/4	5 3/4	6	6						
13	BACK POCKET HEIGHT	1/4	5 3/4	5 3/4	5 3/4						
14	GUSSET WIDTH	1/8	3	3 1/2	3 1/2						
15	HEM HEIGHT	1/8	1	1	1						

ENCHANTÉ

STYLE #	ENTBC24MP08	STYLE NAME	SWEATPANT	CATEGORY	BOTTOMS	SKETCH
SEASON	CORE 2024	DELIVERY	TBC	FABRIC DESCRIPTION	420GSM COTTON FLEECE	
FACTORY	UA	STAGE	PROTO	FABRIC CONTENT	100% COTTON	
SIZE RANGE	XS-XXL	SAMPLE SIZE	MEDIUM	TP BY:	ET	

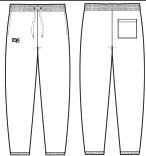
COLORWAY



Colorway: Black
Ground:
Black - Follow Reference Sample Sent
Front Print:
Optic White



ENCHANTÉ

STYLE #	ENTBC24MP08	STYLE NAME	SWEATPANT	CATEGORY	BOTTOMS	SKETCH						
SEASON	CORE 2024	DELIVERY	TBC	FABRIC DESCRIPTION	420GSM COTTON FLEECE							
FACTORY	UA	STAGE	PROTO	FABRIC CONTENT	100% COTTON							
SIZE RANGE	XS-XXL	SAMPLE SIZE	MEDIUM	TP BY:	ET							
SELF		COMBO		LINING								
CUTTING DIRECTION		CUTTING DIRECTION		CUTTING DIRECTION								
PLACEMENT		PLACEMENT		PLACEMENT								
TREATMENT		TREATMENT		TREATMENT								
SAMPLE NOTES / CALLOUTS					1	2	3	4				
COLOR NAME					Black							
					COLOR #				DTM T-Shirt			
CUTTING MATERIAL(S)									COLOR OF MATERIAL			
ITEM	CONTENT	ARTICLE #	DESCRIPTION	SUPPLIER	WIDTH	YIELD	UOM	PLACEMENT	1	2	3	4
SELF	100% COTTON	ART#VTK5971B	Cotton Fleece (420 GSM)	UA	72"			Bodice, Waistband, Cuffs	Black (DTM T-Shirt)			
COMBO												
LINING												
FUSE												
TRIM(S)									COLOR OF TRIM			
ITEM	IMAGE	ARTICLE #	DESCRIPTION	SUPPLIER	SIZE	QUANTITY	UOM	PLACEMENT	1	2	3	4
DRAWSTRING		Factory Sourced	Regular Cotton Drawstring	UA		1	Units	CF Waistband	Black			
PRINT		Factory Sourced	Front Icon Print	UA				Icon at Front Wearer's Right Thigh	Optic White			
ELASTIC A		Factory Sourced	1 3/4" Waistband Elastic	UA				Waistband	Black			
ELASTIC B		Factory Sourced	1" Cuff Elastic	UA				Cuffs	Black			
THREAD		Factory Sourced	Thread	Factory Sourced				All Sewing / Topstitching	DTM Black			
LABELS + HANGTAGS + PACKAGING									COLOR OF TRIM			
ITEM	IMAGE	ARTICLE #	DESCRIPTION	SUPPLIER	SIZE	QUANTITY	UOM	PLACEMENT	1	2	3	4
LABEL		TBC	Enchante Woven Label	TBC	TBC	1	Units	1 x CB Neck				
LABEL		TBC	Enchante Care Label - Alpha	TBC	TBC	1	Units	1 x Wearer's Left SS (See Label Guide)				
PACKAGING			Poly Bag	Biolo	14" x 20"	1	Units					
PACKAGING			Barcode Sticker	Factory Sourced		1	Units					

RENGGLI

STYLE #	ENTBC24MP08	STYLE NAME	SWEATPANT	CATEGORY	BOTTOMS	SKETCH
SEASON	CORE 2024	DELIVERY	TBC	FABRIC DESCRIPTION	420GSM COTTON FLEECE	
FACTORY	UA	STAGE	PROTO	FABRIC CONTENT	100% COTTON	
SIZE RANGE	XS-XXL	SAMPLE SIZE	MEDIUM	TP BY:	ET	

LABEL GUIDE

NOTES:

MAIN LABEL PLACEMENT

Bottoms

ENCHANTÉ

Elasticated Waistband

CB

1/2"

ENCHANTÉ

1/2"

Single needle edge stitch on only folded sides as marked in red
Only stitch through **INSIDE LAYER OF WB**
Center Label at CB and Middle of Waistband
Thread color:
Top thread - DTM to label, Bobbin - DTM TO SELF

CARE LABEL PLACEMENT

2"

ENCHANTÉ

1.13"

0.75"

Insert at Wearer's Left SS,
2" from bottom edge of WB

2"
from WB
edge

Bottom Edge
of Waistband

Wearer's Left
Side Seam

Interior Construction View

ENCHANTÉ

STYLE #	ENTBC24MP08	STYLE NAME	SWEATPANT	CATEGORY	BOTTOMS	<div>SKETCH</div> 
SEASON	CORE 2024	DELIVERY	TBC	FABRIC DESCRIPTION	420GSM COTTON FLEECE	
FACTORY	UA	STAGE	PROTO	FABRIC CONTENT	100% COTTON	
SIZE RANGE	XS-XXL	SAMPLE SIZE	MEDIUM	TP BY:	ET	



IS THERE A WAY WE CAN
IMPROVE THE PRINT
QUALITY - CAN WE DO A
SILICONE OR AN
INJECTION PRINT
INSTEAD?

PROTO FIT COMMENTS (05.16.24)

- 1. ELIMINATE LOGO DRAWSTRING DETAIL - REVERT BACK TO ORIGINAL STANDARD ENCHANTE SWEATPANT COTTON DRAWSTRING
- 2. ELIMINATE "E CHECKER" WOVEN LABEL AT WR'S LEFT LEG
- 3. ELIMINATE "ENCHANTE" PRINT AT BACK WR'S RIGHT LEG
- 4. REDUCE ARTWORK SIZE FOR "EE" ICON PRINT AT WR'S RIGHT THIGH
- 5. IS THERE A DIFFERENT PRINT TECHNIQUE I.E. SILICONE OR INJECTION PRINT THAT WE CAN DO TO MAKE THE PRINT LOOK NICER? ON SAMPLE IT APPEAR SILICONE INJECTION PRINT? CURRENTLY THE PRINT LOOKS A BIT ROUGH SO WE WANT TO SEE WHAT IS POSSIBLE TO IMPROVE AND LOOK MORE REFINED
- 6. PLS NOTE TAN COLORWAY IS CANCELLED - WE WILL ONLY PROCEED WITH BLACK
- 7. PLS MAKE ABOVE CORRECTIONS & SUBMIT 2ND PROTO, THANK YOU!