

ENCHANTÉ

STYLE #	ENTBC24MP13	STYLE NAME	NYLON SHORTS	CATEGORY	BOTTOMS
SEASON	CORE 2024	DELIVERY	TBC	FABRIC DESCRIPTION	NYLON
FACTORY	UA	STAGE	PROTO	FABRIC CONTENT	100% NYLON
SIZE RANGE	XS-XXL	SAMPLE SIZE	MEDIUM	TP BY:	ET



SELF: LX-JN23309 100% NYLON P/D + W/R 126GSM



COLORS:
- BLACK

COVER REMARKS:

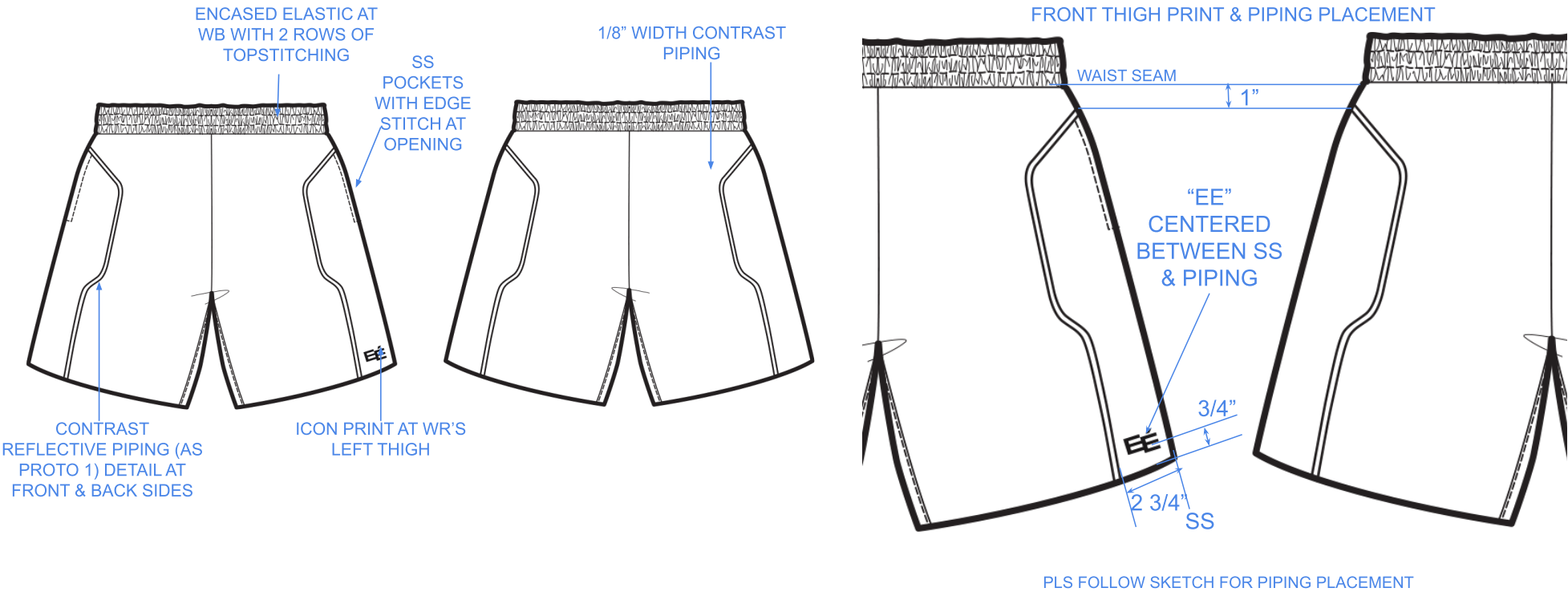
3/18/24 TP SENT - FACTORY TO DEVELOP PATTERN, SUBMIT LAB-DIPS, & LAUNCH PROTO SAMPLE

5/16/24 FIT COMMENTS SENT - FCTY TO MAKE CORRECTIONS & SUBMIT 2ND PROTO

ENCHANTÉ

STYLE #	ENTBC24MP13	STYLE NAME	NYLON SHORTS	CATEGORY	BOTTOMS	SKETCH 
SEASON	CORE 2024	DELIVERY	TBC	FABRIC DESCRIPTION	NYLON	
FACTORY	UA	STAGE	PROTO	FABRIC CONTENT	100% NYLON	
SIZE RANGE	XS-XXL	SAMPLE SIZE	MEDIUM	TP BY:	ET	

CONSTRUCTION

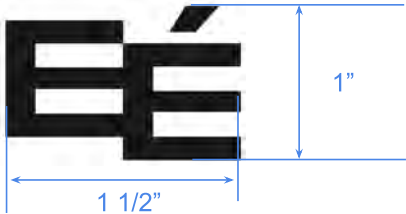


ENCHANTÉ

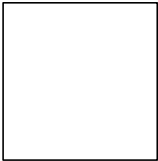
STYLE #	ENTBC24MP13	STYLE NAME	NYLON SHORTS	CATEGORY	BOTTOMS	<div>SKETCH</div> 
SEASON	CORE 2024	DELIVERY	TBC	FABRIC DESCRIPTION	NYLON	
FACTORY	UA	STAGE	PROTO	FABRIC CONTENT	100% NYLON	
SIZE RANGE	XS-XXL	SAMPLE SIZE	MEDIUM	TP BY:	ET	

ARTWORK

FRONT WR’S LEFT THIGH EE ICON PRINT



COLOR STANDARD:



OPTIC WHITE

ENCHANTÉ


STYLE #	ENTBC24MP13	STYLE NAME	NYLON SHORTS	CATEGORY	BOTTOMS	<div>SKETCH</div> 
SEASON	CORE 2024	DELIVERY	TBC	FABRIC DESCRIPTION	NYLON	
FACTORY	UA	STAGE	PROTO	FABRIC CONTENT	100% NYLON	
SIZE RANGE	XS-XXL	SAMPLE SIZE	MEDIUM	TP BY:	ET	

REFERENCE




PLS FACTORY-SOURCE SIMILAR BLACK NYLON QUALITY AS ABOVE REFERENCES

ENCHANTÉ

STYLE #	ENTBC24MP13	STYLE NAME	NYLON SHORTS	CATEGORY	BOTTOMS	
SEASON	CORE 2024	DELIVERY	TBC	FABRIC DESCRIPTION	NYLON	
FACTORY	UA	STAGE	PROTO	FABRIC CONTENT	100% NYLON	
SIZE RANGE	XS-XXL	SAMPLE SIZE	MEDIUM	TP BY:	ET	

[illegible]

ENCHANTÉ

STYLE #	ENTBC24MP13	STYLE NAME	NYLON SHORTS	CATEGORY	BOTTOMS	SKETCH 
SEASON	CORE 2024	DELIVERY	TBC	FABRIC DESCRIPTION	NYLON	
FACTORY	UA	STAGE	PROTO	FABRIC CONTENT	100% NYLON	
SIZE RANGE	XS-XXL	SAMPLE SIZE	MEDIUM	TP BY:	ET	

COLORWAY



BLACK



OPTIC WHITE

Colorway: Black

Ground:

Black

Front Icon Print:


Optic White

Piping:

Reflective (As Proto 1)



ENCHANTÉ

STYLE #		ENTBC24MP13		STYLE NAME		NYLON SHORTS		CATEGORY		BOTTOMS		SKETCH	
SEASON		CORE 2024		DELIVERY		TBC		FABRIC DESCRIPTION		NYLON			
FACTORY		UA		STAGE		PROTO		FABRIC CONTENT		100% NYLON			
SIZE RANGE		XS-XXL		SAMPLE SIZE		MEDIUM		TP BY:		ET			
SELF				COMBO				LINING					
CUTTING DIRECTION				CUTTING DIRECTION				CUTTING DIRECTION					
PLACEMENT				PLACEMENT				PLACEMENT					
TREATMENT				TREATMENT				TREATMENT					
SAMPLE NOTES / CALLOUTS										1	2	3	4
COLOR NAME										Black			
										COLOR #			
CUTTING MATERIAL(S)										COLOR OF MATERIAL			
ITEM	CONTENT	ARTICLE #	DESCRIPTION	SUPPLIER	WIDTH	YIELD	UOM	PLACEMENT	1	2	3	4	
SELF	TBC	TBC NYLON	TBC Nylon	UA				Bodice, Waistband, Pocketing	Black				
COMBO													
LINING													
FUSE													
TRIM(S)										COLOR OF TRIM			
ITEM	IMAGE	ARTICLE #	DESCRIPTION	SUPPLIER	SIZE	QUANTITY	UOM	PLACEMENT	1	2	3	4	
PRINT		Factory Sourced	Icon Print	Factory Sourced				Front Wearer's Left Thigh	Optic White				
PIPING		Factory Sourced	Reflective Piping	Factory Sourced				Front & Back Leg	Reflective				
THREAD		Factory Sourced	Thread	Factory Sourced				All Sewing / Topstitching	DTM Black				
ELASTIC A		Factory Sourced	1 3/4" Waistband Elastic	UA				Waistband	Black				
LABELS + HANGTAGS + PACKAGING										COLOR OF TRIM			
ITEM	IMAGE	ARTICLE #	DESCRIPTION	SUPPLIER	SIZE	QUANTITY	UOM	PLACEMENT	1	2	3	4	
LABEL		TBC	Enchante Woven Label	TBC	TBC	1	Units	1 x CB Neck					
LABEL		TBC	Enchante Care Label - Alpha	TBC	TBC	1	Units	1 x Wearer's Left SS (See Label Guide)					
PACKAGING			Poly Bag	Biolo	14" x 20"	1	Units						
PACKAGING			Barcode Sticker	Factory Sourced		1	Units						

RENGGLI

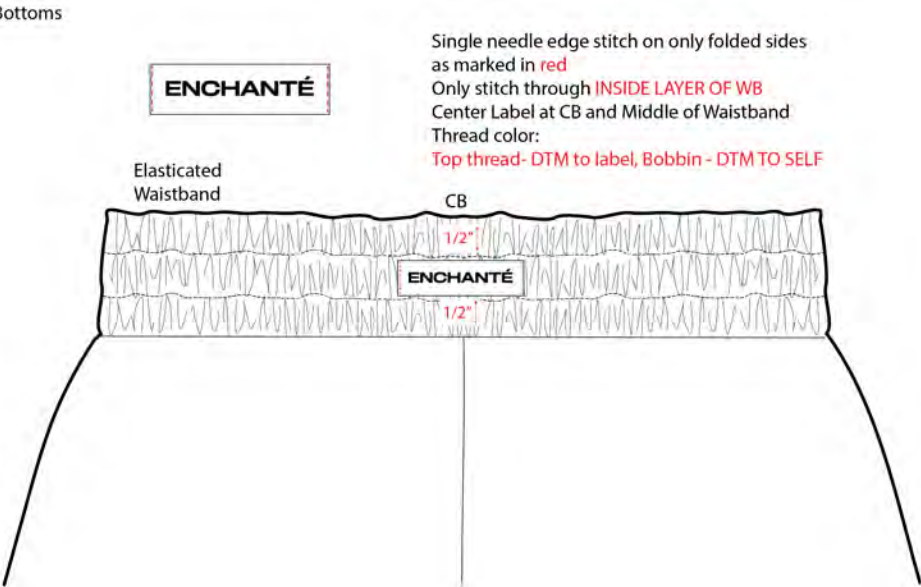
STYLE #	ENTBC24MP13	STYLE NAME	NYLON SHORTS	CATEGORY	BOTTOMS	<div>SKETCH</div> 
SEASON	CORE 2024	DELIVERY	TBC	FABRIC DESCRIPTION	NYLON	
FACTORY	UA	STAGE	PROTO	FABRIC CONTENT	100% NYLON	
SIZE RANGE	XS-XXL	SAMPLE SIZE	MEDIUM	TP BY:	ET	

LABEL GUIDE

NOTES:

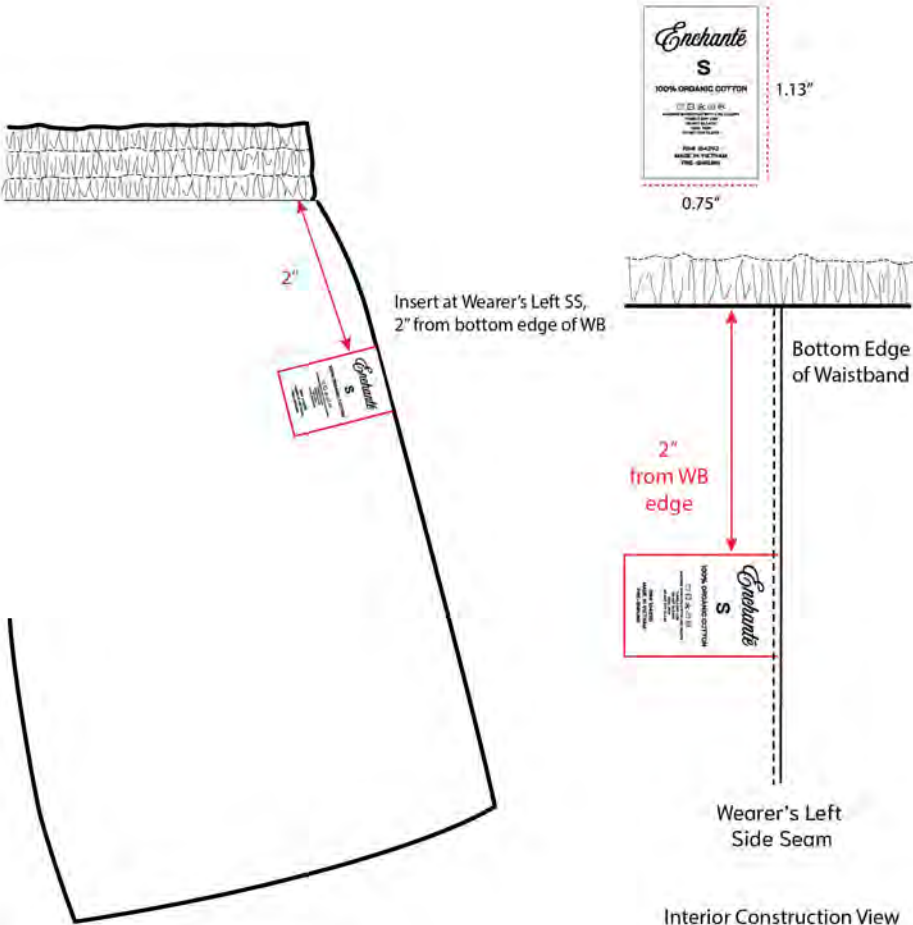
MAIN LABEL PLACEMENT

Bottoms



Single needle edge stitch on only folded sides as marked in **red**
Only stitch through **INSIDE LAYER OF WB**
Center Label at CB and Middle of Waistband
Thread color:
Top thread - DTM to label, Bobbin - DTM TO SELF

CARE LABEL PLACEMENT



Insert at Wearer's Left SS,
2" from bottom edge of WB

2" from WB edge

Bottom Edge of Waistband

Wearer's Left Side Seam

Interior Construction View

ENCHANTÉ

STYLE #	ENTBC24MP13	STYLE NAME	NYLON SHORTS	CATEGORY	BOTTOMS	<div>SKETCH</div> 
SEASON	CORE 2024	DELIVERY	TBC	FABRIC DESCRIPTION	NYLON	
FACTORY	UA	STAGE	PROTO	FABRIC CONTENT	100% NYLON	
SIZE RANGE	XS-XXL	SAMPLE SIZE	MEDIUM	TP BY:	ET	



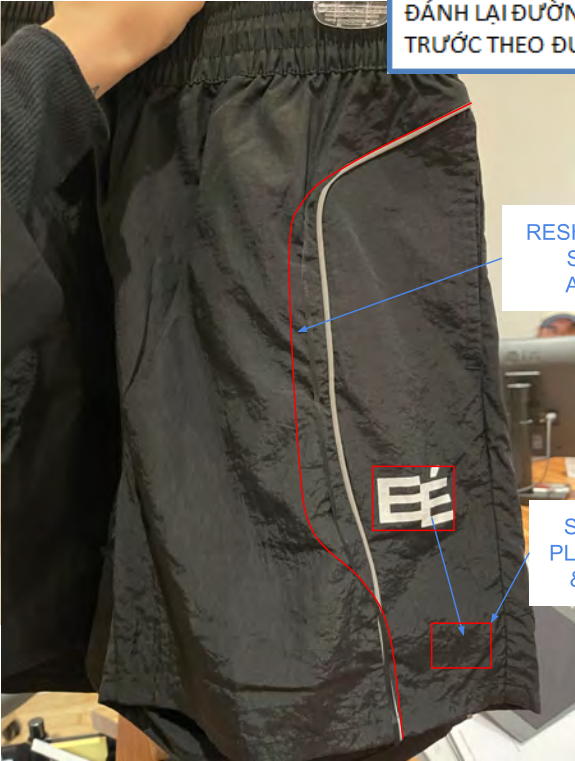
ELIMINATE BUNGEE EYELET/BUNGEE - CHANGE TO CLEAN ELASTIC WAISTBAND

BỎ DÂY LƯỖN, MẮT CÁO

CHANGE TO TBC SILICONE OR INJECTION PRINT, REDUCE ARTWORK SIZE, SHIFT ARTWORK LOWER CLOSER TO LEG OPENING

REFLECTIVE PIPING ON PROTO APPROVED

ĐỔI HÌNH IN THÀNH CHẤT LƯỢNG SILICONE, ĐỜI VỊ TRÍ XUỐNG DƯỚI LẠI



ĐÁNH LẠI ĐƯỜNG CONG DÂY PIPING THÂN TRƯỚC THEO ĐƯỜNG MÀU ĐỎ

RESHAPE PIPING SO MORE ANGULAR

SHIFT ARTWORK PLACEMENT DOWN & REDUCE SIZE

ĐỜI HÌNH IN XUỐNG LẠI VÀ GIẢM KÍCH THƯỚC

PROTO FIT COMMENTS (05.16.24)

1. ELIMINATE LOGO BUNGEE DETAIL AND CHANGE TO CLEAN ELASTIC WAISTBAND
2. WE LIKE THE REFLECTIVE PIPING ON PROTO - IS IT POSSIBLE TO PROCEED WITH THIS PIPING FOR PRODUCTION?
3. RESHAPE PIPING TO BE SLIGHTLY MORE ANGULAR AS SKETCH (SEE ABOVE DRAWING FOR REFERENCE)
4. SHIFT PRINT PLACEMENT DOWN TO BE CLOSER TO LEG OPENING - REDUCE ARTWORK SIZE (SEE PAGE 3 AND SEPARATE UPATED ARTWORK FILE)
5. WHAT ARE OTHER PRINT TECHNIQUES WE ARE ABLE TO UTILIZE ON THE NYLON IE SILICONE OR INJECTION PRINT - WE WOULD LIKE FOR THE PRINT TO BE MORE REFINED - CURRE
6. PLS HELP TO MAKE ABOVE CORRECTIONS & SUBMIT 2ND PROTO, THANK YOU!

[illegible]