

KOALA

PRINTED: 22-May-24

STYLE: PLS0824T09

SEASON: SUMMER 2024

DIVISION: UNISEX

TYPE: CUT AND SEW KNIT

DESCRIPTION: THE SORCERER'S STONE POCKET TEE

FACTORY: UnAvailable

FABRIC: 230GSM JERSEY

TECH PACK BY: DANIEL DUGOFF

SIZE RANGE: XS - 5XL

LAST EDIT DATE: 22-May-24

SKETCH



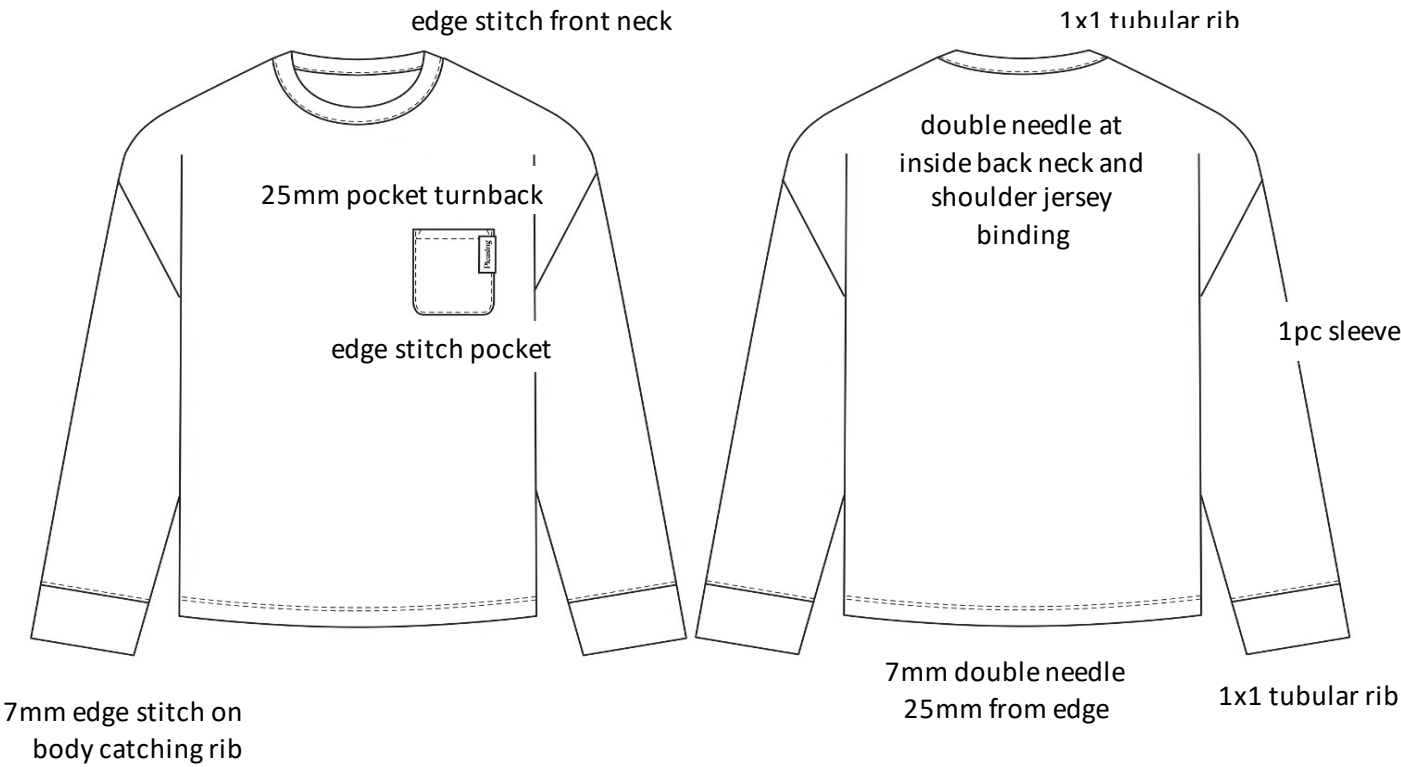
KOALA

PRINTED: 22-May-24

STYLE: PLS0824T09
DIVISION: UNISEX
DESCRIPTION: THE SORCERER'S STONE POCKET TEE
FABRIC: 230GSM JERSEY
SIZE RANGE: XS - 5XL

SEASON: SUMMER 2024
TYPE: CUT AND SEW KNIT
FACTORY: UnAvailable
TECH PACK BY: DANIEL DUGOFF
LAST EDIT DATE: 22-May-24

DETAIL SKETCH



KOALA

PRINTED: 22-May-24

STYLE: PLS0824T09

DIVISION: UNISEX

DESCRIPTION: THE SORCERER'S STONE POCKET TEE

FABRIC: 230GSM JERSEY

SIZE RANGE: XS - 5XL

SEASON: SUMMER 2024

TYPE: CUT AND SEW KNIT

FACTORY: UnAvailable

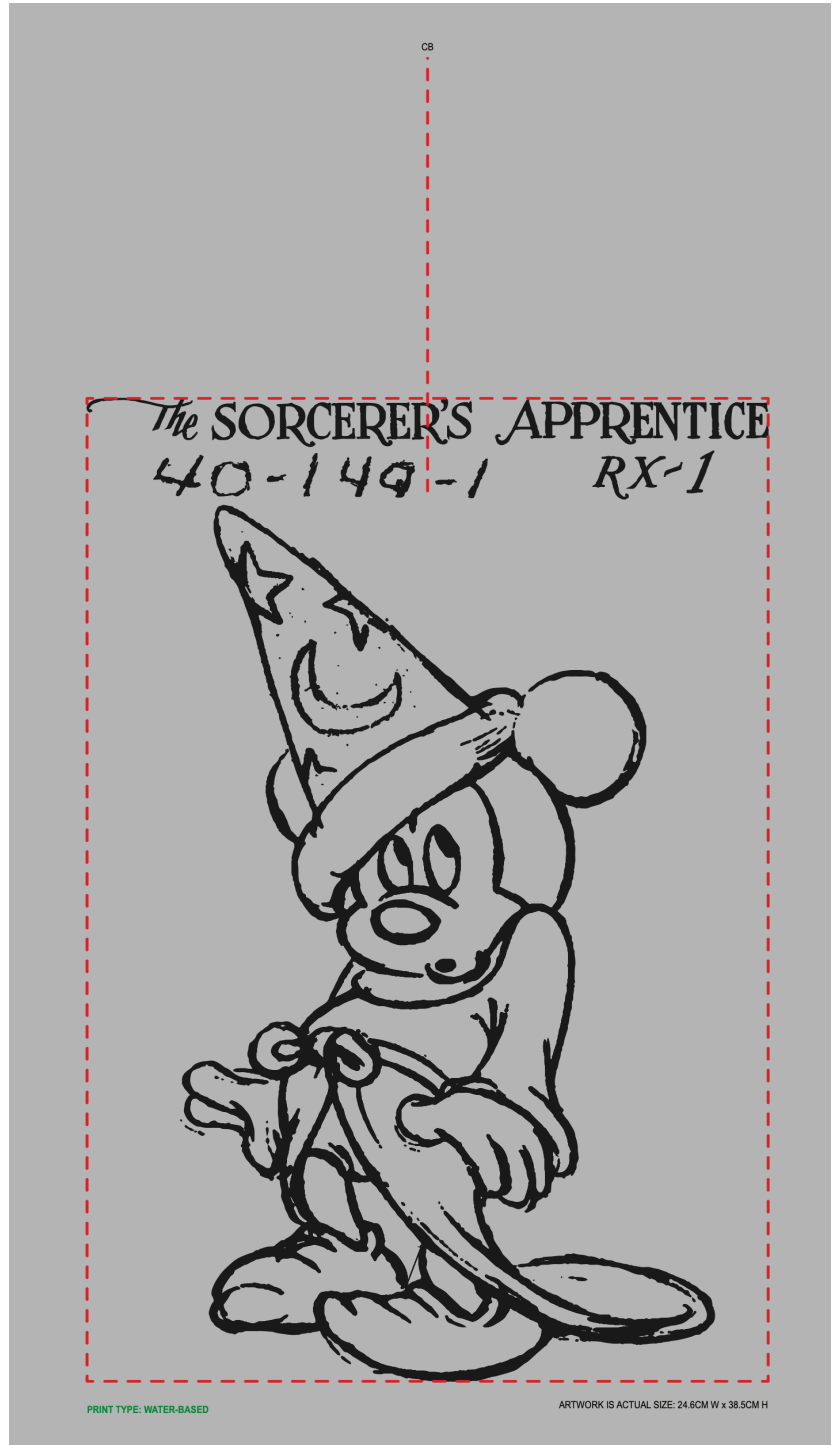
TECH PACK BY: DANIEL DUGOFF

LAST EDIT DATE: 22-May-24

PRINT LAYOUT



Artwork and Layout: "PLS0824T09 Artwork and Layout 20240228.ai"



KOALA

PRINTED: 22-May-24

STYLE: PLS0824T09

DIVISION: UNISEX

DESCRIPTION: THE SORCERER'S STONE POCKET TEE

FABRIC: 230GSM JERSEY

SIZE RANGE: XS - 5XL

SEASON: SUMMER 2024

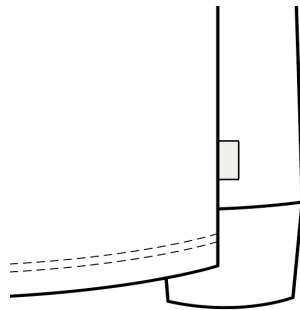
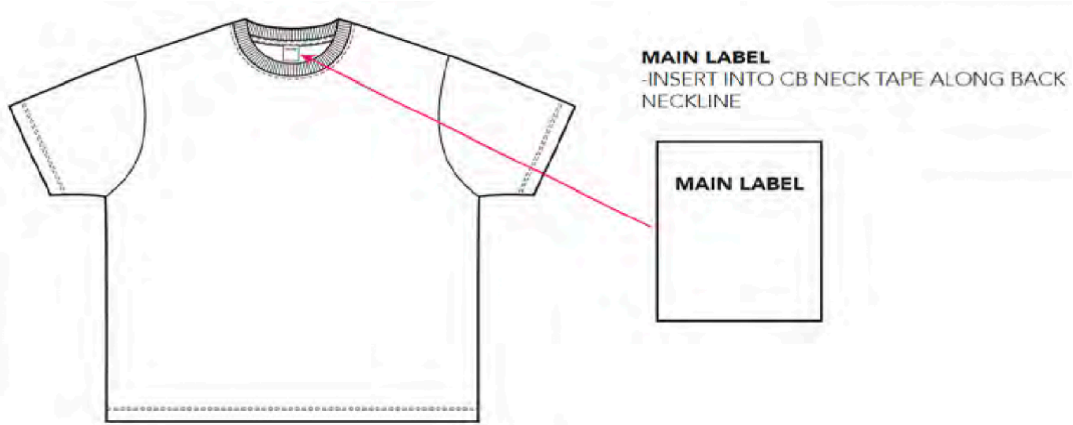
TYPE: CUT AND SEW KNIT

FACTORY: UnAvailable

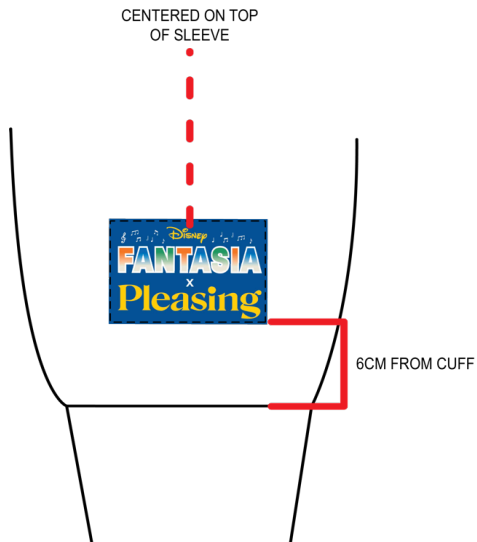
TECH PACK BY: DANIEL DUGOFF

LAST EDIT DATE: 22-May-24

LABEL PLACEMENT



CLIP LABEL INSERTED INTO WR'S LEFT SIDE SEAM
12CM ABOVE HEM



KOALA

PRINTED: 22-May-24

STYLE: PLS0824T09
DIVISION: UNISEX
DESCRIPTION: THE SORCERER'S STONE POCKET TEE
FABRIC: 230GSM JERSEY
SIZE RANGE: XS - 5XL

SEASON: SUMMER 2024
TYPE: CUT AND SEW KNIT
FACTORY: UnAvailable
TECH PACK BY: DANIEL DUGOFF
LAST EDIT DATE: 22-May-24

OVERVIEW

FIT REFERENCE: CARRYOVER AS PLS0524T13

THREAD: MARA 100

SPI: 10-12

FABRICS: BODY: 230GSM JERSEY
RIB: RIB

TRIM + PLACEMENT: MAIN LABEL @ CBN

CLIP LABEL @ WR'R LEFT SIDE SEAM

CARE LABEL @ INSIDE WEARER'S LEFT SS

MAIN LABEL @ WR'S RIGHT SLEEVE CUFF

TOPSTITCH + PLACEMENT: EDGE STITCH AROUND NECK ON SELF, CATCHING NECK TUBULAR RUB
SPLIT DOUBLE NEEDLE AT BACK NECK JERSEY BINDING
7MM SINGLE NEEDLE AT CUFF ON SELF, CATCHING CUFF TUBULAR RIB
7MM DOUBLE NEEDLE 25MM FROM HEM AT SWEEP
EDGE STITCH CHEST POCKET
7MM DOUBLE NEEDLE 25MM FROM HEM AT POCKET OPENING
TRIANGLE TURNBACK AT POCKET OPENING
ALL INSIDE SEAMS IN LOCKING MERROW
EDGE STITCH AROUND LABEL AT WR'S RIGHT CUFF, DTM TO LABEL

CONSTRUCTION DETAILS: CREW NECK LONG SLEEVE T-SHIRT
TUBULAR RIB @ NECK, CUFFS
BIND INSIDE BACK NECK AND SHOULDER IN JERSEY
SIDE SEAM HAS CLIP LABEL INSERTED INTO WEARER'S LEFT SIDE

DECORATION DETAILS: PRINT @ FRONT POCKET: WATER BASED
PRINT @ BACK BODY: WATER BASED

22-May-24

SEASON: SUMMER 2024
TYPE: CUT AND SEW KNIT
FACTORY: UnAvailable
TECH PACK BY: DANIEL DUGOFF
LAST EDIT DATE: 22-May-24

SAMPLE SPECS

[illegible]

22-May-24

SEASON: SUMMER 2024
TYPE: CUT AND SEW KNIT
FACTORY: UnAvailable
TECH PACK BY: DANIEL DUGOFF
LAST EDIT DATE: 22-May-24

GRADED SPECS

[illegible]

KOALA

PRINTED: 22-May-24

STYLE: PLS0824T09

DIVISION: UNISEX

DESCRIPTION: THE SORCERER'S STONE POCKET TEE

FABRIC: 230GSM JERSEY

SIZE RANGE: XS - 5XL

SEASON: SUMMER 2024

TYPE: CUT AND SEW KNIT

FACTORY: UnAvailable

TECH PACK BY: DANIEL DUGOFF

LAST EDIT DATE: 22-May-24

COMMENTS

DATE: 3/6/24
STATUS: APPROVED WITH CORRECTIONS FOR SMS SUBMIT
FIT MODELS: CALEB
NOTE: UPDATE FABRIC BASE TO 230 GSM JERSEY

FIT COMMENTS:

1. Body length came in short - please go back to spec
2. Undersleeve seam spec was incorrect - keep as sample
3. Pocket height came in too tall - please go back to spec.
4. Garment color is approved
5. Please use soft hand feel print for SMS. We would prefer water-based ink for this style!
6. We reduced the artwork size and updated the placement. See revised artwork file as well as updated specs.

SWATCH	PANTONE	PANTONE #	COMMENT:
	MINERAL RED	17-1537 TCX	Approved



DATE: 5/22/24
STATUS: RESBUMIT PPS

COMMENTS:

- 1. Fit approved as sampled
- 2. Artwork size and placement approved as sampled
- 3. Add Pleasing x Disney co-branded label to wearer's right sleeve
 - Position 6cm above cuff
 - Center on top of sleeve
 - Edge stitch label on all 4 sides, matching blue color of label
 - See updated label placement guide
- 4. Move clip label from pocket to wearer's left side seam, 12cm above hem as updated label placement guide

SWATCH	PANTONE	PANTONE #	COMMENT:
	MINERAL RED	17-1537 TCX	APPROVED AS SAMPLED




KOALA

PRINTED: 22-May-24

STYLE: PLS0824T09
DIVISION: UNISEX
DESCRIPTION: THE SORCERER'S STONE POCKET TEE
FABRIC: 230GSM JERSEY
SIZE RANGE: XS - 5XL

SEASON: SUMMER 2024
TYPE: CUT AND SEW KNIT
FACTORY: UnAvailable
TECH PACK BY: DANIEL DUGOFF
LAST EDIT DATE: 22-May-24

BOM

				
	PLS0824T09			
SELF FABRIC	MINERAL RED			
VENDOR:	UnAvailable	COLOR CODE:	17-1537 TCX	
QUALITY:	230GSM JERSEY	LAB DIP #:		
DESCRIPTION:	100% COTTON	NOTE:		
RIB	MINERAL RED			
VENDOR:	UnAvailable	COLOR CODE:	17-1537 TCX	
QUALITY:	1X1 RIB	LAB DIP #:		
DESCRIPTION:		NOTE:		
THREAD 1	MINERAL RED			
WEIGHT:	MARA100	COLOR CODE:	17-1537 TCX	
SPI:	10-12	PLACEMENT:	ALL SEAMS	
WATER-BASED PRINT				
	PLACEMENT:	FRONT POCKET		
		BACK BODY		
CUFF LABEL	TPC X DISNEY MAIN LABEL - FLAT			
VENDOR:		PLACEMENT:	WR'S RIGHT CUFF	
CODE:		PLACEMENT #:		
NOTE:				
MAIN LABEL	TPC X DISNEY MAIN LABEL - FOLDED			
VENDOR:		PLACEMENT:	INSIDE CB NECK	
CODE:		PLACEMENT #:		
NOTE:				
CARE LABEL				
VENDOR:		PLACEMENT:	INSIDE WR'S LEFT SS	
CODE:		PLACEMENT #:		
NOTE:				
CLIP LABEL	TPC CLIP LABEL			
VENDOR:		PLACEMENT:	POCKET EDGE	
CODE:		PLACEMENT #:		
NOTE:				
HANGTAG				
VENDOR:		PLACEMENT:		
CODE:		PLACEMENT #:		
NOTE:				
UPC LABEL				
CODE:		PLACEMENT:		
		PLACEMENT #:		
POLYBAG				
VENDOR:		FOLDING TYPE:		
CODE:				
NOTE:				