

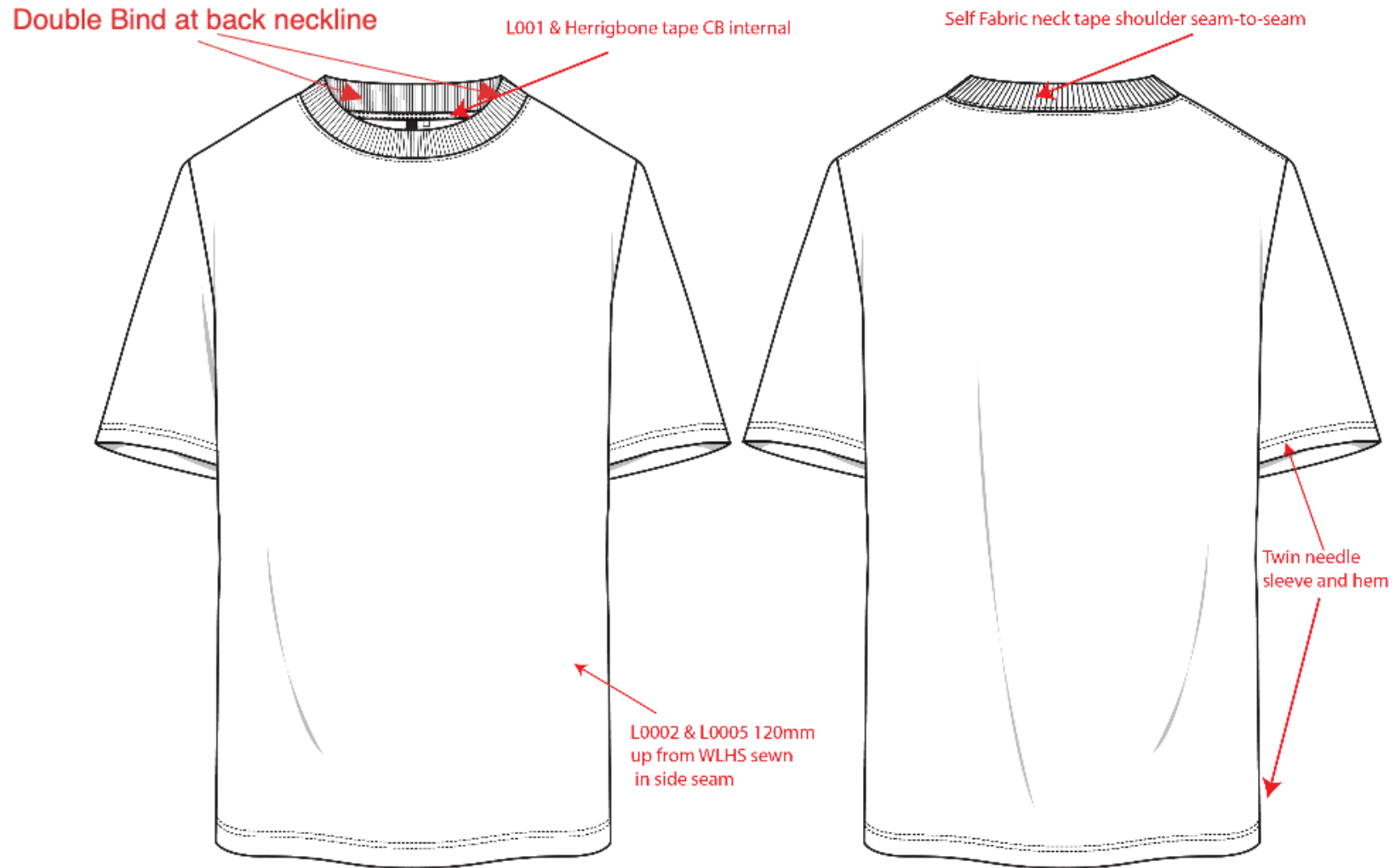
# SAMPLE REPORT

**Description** Offset Heavyweight Unisex Oversized Tee**Status** In Progress**Report** Proto 2**Designer** Jah Baldi**Spec** UNISEX OVERSIZE 11A119**Colour** (0156) White**Unit** CM**Agent****Size** S,L**Factory** Un-Available Ltd

## Specification

| POM | POINTS TO MEASURE                     | S    | V    | R    | Rev | L    | V    | R    | Rev | Tol+ | Tol- |
|-----|---------------------------------------|------|------|------|-----|------|------|------|-----|------|------|
| A   | Chest 2.5cm below armhole - FLAT      | 61.5 | 61   | -0.5 |     | 66.5 | 66   | -0.5 |     | 1.5  | 1.5  |
| B   | Sweep - FLAT                          | 58   | 57.8 | -0.2 |     | 63   | 63.7 | 0.7  |     | 1.5  | 1.5  |
| C   | Shoulder Breadth                      | 57   | 56.8 | -0.2 |     | 60   | 59.2 | -0.8 |     | 2    | 2    |
| D   | Neck Width: Seam to Seam w/o trim     | 21.1 | 21.3 | 0.2  |     | 22.3 | 21.8 | -0.5 |     | 0.7  | 0.7  |
| E   | Neck trim height (Rib)                | 3    | 3    |      |     | 3    | 2.9  | -0.1 |     | 0.3  | 0.3  |
| F   | FT neck depth from H.P.S w/o trim     | 10.7 | 10.6 | -0.1 |     | 11   | 11   |      |     | 0.5  | 0.5  |
| G   | BK neck depth from H.P.S w/o trim     | 3.5  | 3.3  | -0.2 |     | 3.5  | 3.4  | -0.1 |     | 0.3  | 0.3  |
| H   | Length from H.P.S. to Sweep           | 73   | 73.7 | 0.7  |     | 75.5 | 76.1 | 0.6  |     | 1.25 | 1.25 |
| I   | Shoulder slope w/o trim               | 7.5  | 7.3  | -0.2 |     | 7.5  | 7.8  | 0.3  |     | 0.5  | 0.5  |
| J   | Sleeve Length (Shoulder seam to cuff) | 19.5 | 20   | 0.5  |     | 21.5 | 21.5 |      |     | 0.5  | 0.5  |
| K   | Sleeve opening -FLAT                  | 19   | 19.2 | 0.2  |     | 21   | 21   |      |     | 0.5  | 0.5  |
| L   | Sleeve Underarm Length                | 11   | 10.9 | -0.1 |     | 13   | 12.8 | -0.2 |     | 0.5  | 0.5  |
| M   | Armhole Curve -FLAT                   | 27   | 27.1 | 0.1  |     | 29   | 29.7 | 0.7  |     | 0.5  | 0.5  |

## Sketch





LSKD Pty Ltd  
46 Burchill Street  
Unit 2  
Loganholme, Queensland, 4129  
Australia

Phone:61738074442  
Email:murilof@lskd.co

**Style No.** USST02628

Generated By 3 Clicks 15 Aug 2025

Page 3 of 9

## Images





## Images





LSKD Pty Ltd  
46 Burchill Street  
Unit 2  
Loganholme, Queensland, 4129  
Australia

Phone: 61738074442  
Email: murilof@lskd.co

**Style No.** USST02628

Generated By 3 Clicks 15 Aug 2025

Page 5 of 9

## Images





## Images



## Images



## Images



PRINT PLACEMENT - please raise print by  
by 0.5cm if possible





LSKD Pty Ltd  
46 Burchill Street  
Unit 2  
Loganholme, Queensland, 4129  
Australia

Phone:61738074442  
Email:murilof@lskd.co

**Style No.** USST02628

Generated By 3 Clicks 15 Aug 2025

Page 9 of 9

## Notes

Amelia Bosgra 29 May 2025 Updated by Amelia Bosgra 30 May 2025

### PRINT COLOUR

Please note print colours have been updated as we are wanting a tonal look

Black washed - Black Oyster 19-0205 TCX

please send strike off for review on correct black washed fabric

White - Lucent White 11-0700 TCX

Please send strike off for review

PRINT QUALITY -approved! big improvement from first proto thank you!

PRINT PLACEMENT - please raise print by by 0.5cm if possible

Thank you!

Amelia Bosgra 28 May 2025 Updated by Amelia Bosgra 30 May 2025

Go back to spec on OOT measurement

For next submission please send XS and Large size for us to review

Thank you!